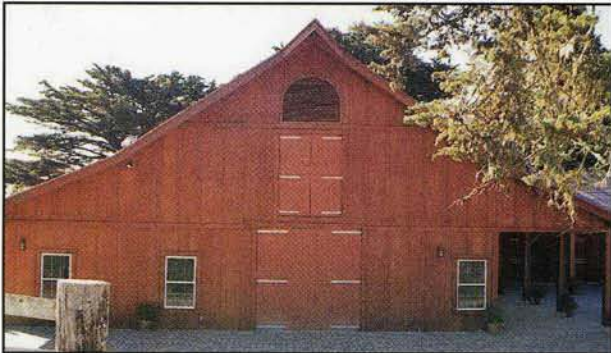




## Experienced Door System Specialists with Complete Door System Solutions



Berkely CA Fire Station  
4 Panel Curved Telescoping, Sliding Electronically Operated 24'x17' Doors



Barn Doors and Hardware

- Custom Doors
- Industrial Doors
- Industrial Door Hardware
- Barn Door Hardware
- Industrial Door Operators
- Complete Door Systems



Flat Track Sliding Door Hardware



Industrial Bi-Folding Doors



Lockheed Electric Door Operators and Pneumatic  
Cremona Bolts (36'x36' opening)





**#946 Super-Wood Doors**

An all wood door suitable for both commercial and industrial use. The doors are constructed of clear grade tongue and groove strips fit into a sturdy clear grade wood stile and rail frame.

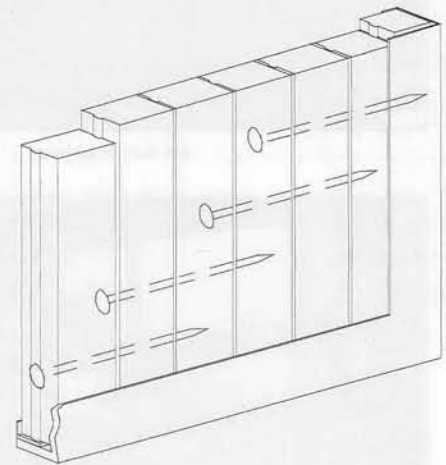
Each door is thoroughly treated with a high quality preservative to reduce moisture penetration. This treatment, combined with the staggered screwing pattern helps to avoid the excessive shrinking and swelling common to most solid wood doors. Pass doors and sash are available. Glass not included.

Ideal for barn doors.



#946 INFORMATION TABLE		
Door Thickness	Weight per Square Foot	Thickness of Panels
1-3/4"	3 Lbs.	13/16"
2-1/4"	5 Lbs.	1-1/8"
2-1/2"	6 Lbs.	1-1/8"
2-3/4"	6 1/2 Lbs.	1-1/8"

Door Thickness	Door Size		Vertical Stile	Top Rail	Interior Style & Rail	Bottom Rail
	Width	Height				
<b>Single Swing and Pairs of Swing Doors</b>						
1-3/4" or 2-1/4"	to 3'6"	to 8'0"	5-1/4"	5-1/4"	5-1/4"	7-1/4"
2-1/4" or 2-1/2"	3'7" to 5'0"	8'1" to 16'0"	7-1/4"	7-1/4"	5-1/4"	9-1/4"
2-1/2" or 2-3/4"	5'1" to 7'0"	16'1" to 22'0"	7-1/4"	9-1/4"	5-1/4"	10-3/4"
<b>Folding Doors</b>						
1-3/4" or 2-1/4"	to 2'6"	to 10'0"	5-1/4"	7-1/4"	5-1/4"	7-1/4"
2-1/4" or 2-1/2"	2'7" to 4'0"	10'1" to 16'0"	7-1/4"	7-1/4"	5-1/4"	9-1/4"
2-1/2" or 2-3/4"	4'1" to 5'0"	16'1" to 22'0"	7-1/4"	7-1/4"	5-1/4"	10-3/4"
<b>Horizontal Slide</b>						
1-3/4" or 2-1/4"	to 8'2"	to 8'1"	7-1/4"	7-1/4"	5-1/4"	7-1/4"
2-1/4" or 2-1/2"	8'3" to 12'2"	8'2" to 10'1"	7-1/4"	9-1/4"	5-1/4"	9-1/4"
2-1/2" or 2-3/4"	12'3" to 22'0"	10'2" to 16'1"	7-1/4"	9-1/4"	5-1/4"	10-3/4"
<b>Vertical Lift Single and Two Section</b>						
1-3/4" or 2-1/4"	to 8'2"	to 8'1"	7-1/4"	7-1/4"	5-1/4"	7-1/4"
2-1/4" or 2-1/2"	8'3" to 12'2"	8'2" to 10'1"	7-1/4"	7-1/4"	5-1/4"	9-1/4"
2-1/2" or 2-3/4"	12'3" to 22'0"	10'2" to 16'1"	7-1/4"	9-1/4"	5-1/4"	10-3/4"
Muntin bars 1-1/8" wide x door thickness, for doors up to 2-1/2" thick.						
Muntin bars 1-1/2" wide x door thickness, for doors 2-1/2" thick and over.						
Dimensions shown above may vary according to lumber sizes received.						



**#948 Super-steel frame Wood Panel Door** (shown on back cover)  
 Wood panels are built with a heavy-duty welded steel angle or channel frame. Doors over 4' in width have additional "T" bars welded both vertically and horizontally inside the frame to maintain rigidity.





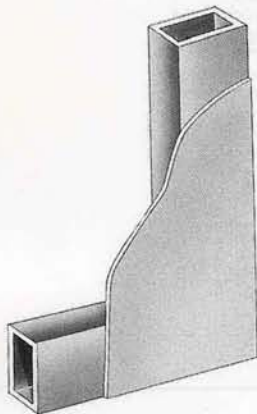
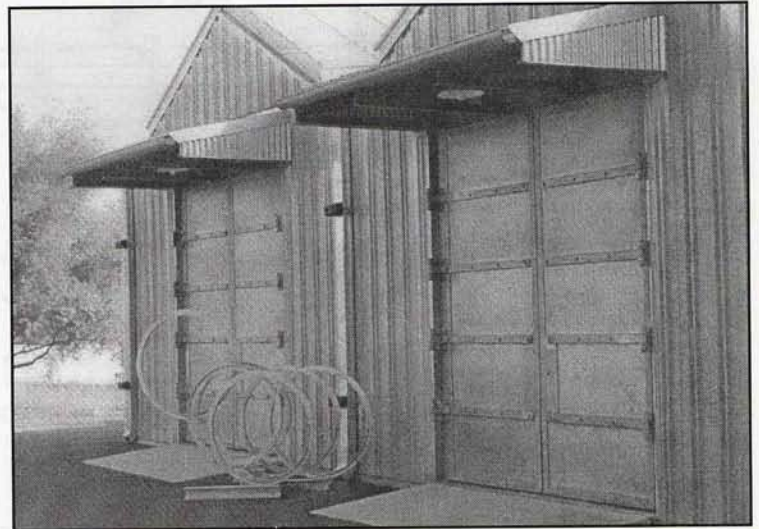
### Series #900 Steel Plate Doors

Each of the three styles of the #900 series steel plate doors is custom built to meet your specific application. Designed for straight sliding, slide-fold, swing or vertical lift applications, these doors are constructed of top quality cold formed steel tube and heavy-gauge galvanized steel face sheets to assure maximum rigidity and long life.

All doors receive a coat of rust inhibitive primer before shipment. Sash, louvers, and pass doors are available. Glass is not included.

#### Pass Doors, Louvers and Sash

Any door can be supplied with pass doors, louvers or sash. Specifications vary depending on door style and applications.

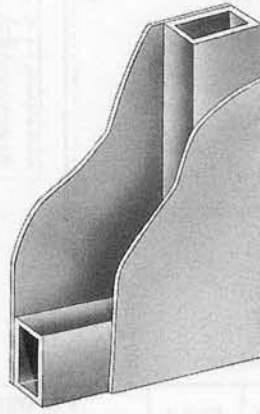


#### #972 PLATE

##### One Side

Construction: Mitered door frame is welded at all corners and intersections and ground smooth. Face is welded to frame. All face joints occur over reinforcing members.

Thickness:	2-9/16"
Frame:	2-1/2" x 2-1/2" x .120" cold formed tube
Face:	milled flat 14 ga galvanized A60 finish with 1 coat of shop primer paint
Weight:	7.2 lbs. per sq. ft.

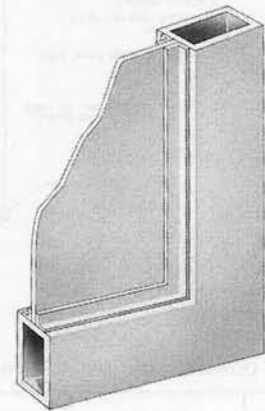


#### #973 PLATE

##### Both Sides

Construction: Mitered door frame is welded at all corners and intersections and ground smooth. Face is welded to frame. All face joints occur over reinforcing members. Fiberglass insulation available.

Thickness:	2-5/8"
Frame:	2-1/2" x 2-1/2" x .120" cold formed tube
Face:	milled flat 14 ga galvanized A60 finish with 1 coat of shop primer paint
Weight:	10.2 lbs. per sq. ft.

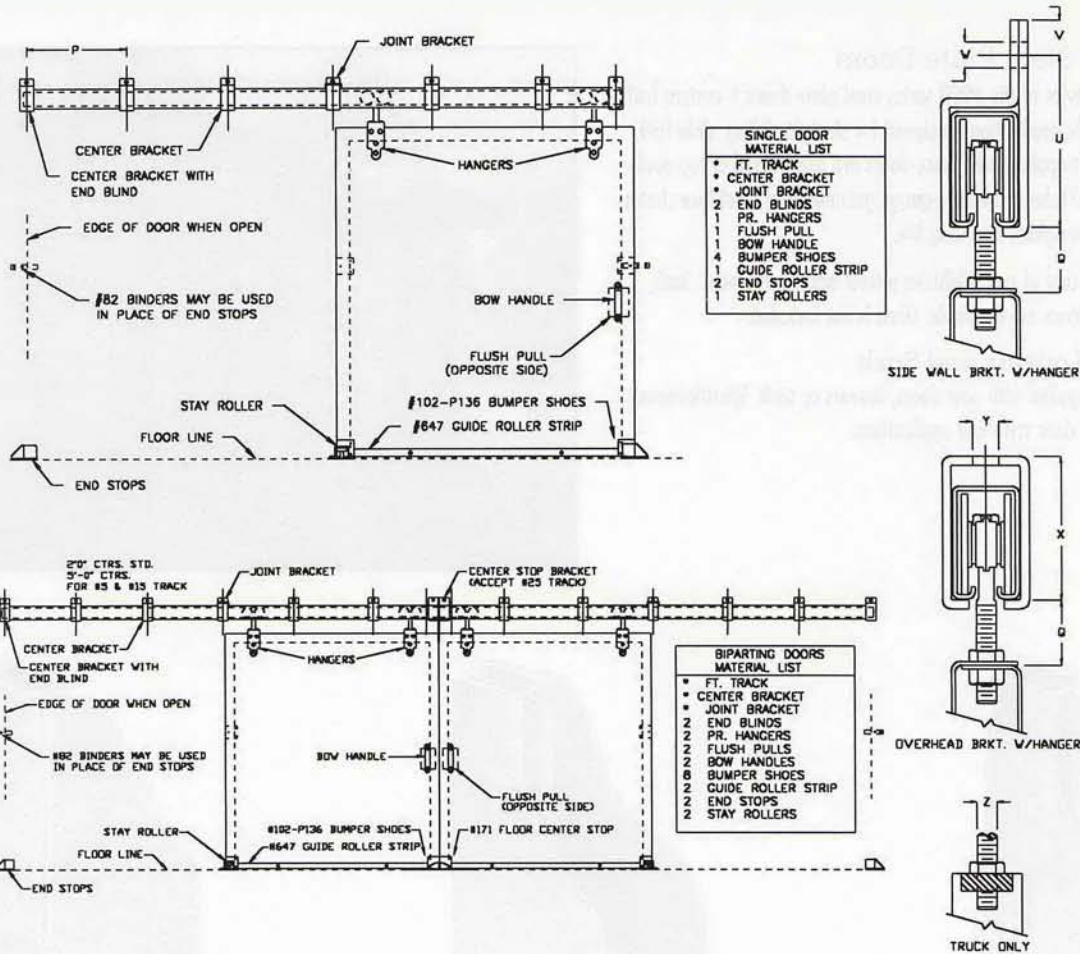


#### #974 PLATE

##### Center Panel

Construction: Mitered door frame is welded at all corners and intersections and ground smooth. Panels are held in place by continuous steel angles.

Thickness:	2-1/2"
Frame:	2-1/2" x 2-1/2" x .120" cold formed tube
Face:	milled flat 14 ga galvanized A60 finisher with 1 coat of shop primer paint
Weight:	6.4 lbs. per sq. ft.



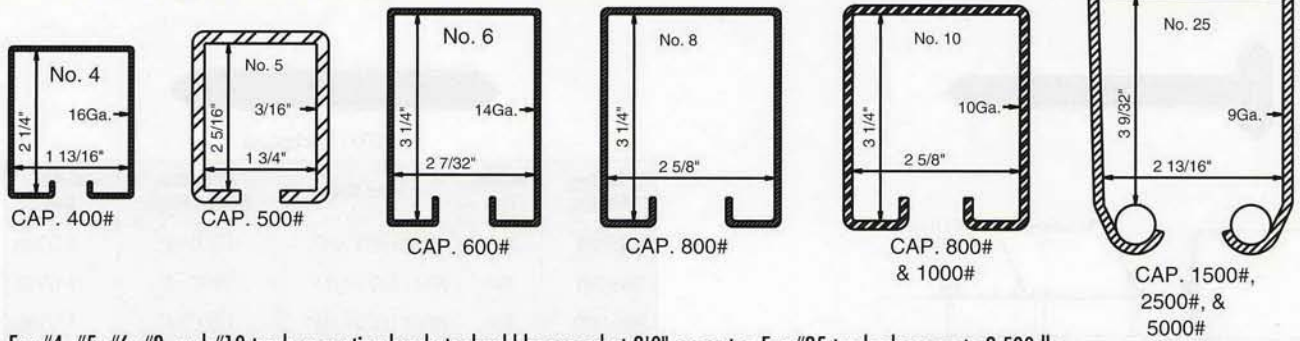
A variety of powder coat finishes and 304 stainless steel available.

Door Weight in Lbs.	Track No.	Hardware Set	Trolley Bearings	Digit 4				Digit 5	Digit 6	X OPENING WIDTH		DIMENSIONS														
				Single Door	Bi-Parting Door	Polymer	Roller			Ball	Door Thickness		Manual Operation	Electric Operation	Example 800 lb., single door, wood door, 2-1/2" thick, side wall mount, electrically operated x (Opening Width). Hardware Set No. = 101B35E x (Opening Width).		Trolleys		Side Wall Support Brackets			Overhead Brackets				
											1-1/2" to 2-1/4"	1-3/4" to 2-1/4"			2-1/4" to 3"	2-1/4" to 3-3/4"	Max.	Min.	"Q"	"U"	"V"	"W"	"X"	"Y"	"Z"	"P"
400	4	1	2	P	R	B	1		T	S	O	M		1-1/4"	2-1/2"	3-3/4"	13/16"	3/8"	3-1/8"	3/8"	1/2"-13	2'0"				
500	5	1	2			B	2		T	S	O	M		3-11/16"	4-3/16"	5-7/8"	7/8"	5/8"	3-3/4"	1/2"	3/4"-10	5'0"				
600	6	1	2		R	B	2	3	T	S	O	M		1-1/8"	2-3/4"	5-1/4"	7/8"	5/8"	4-3/8"	1/2"	3/4"-10	2'0"				
800	8	1	2		R	B	2	3	T	S	O	M		1-1/8"	2-3/4"	5-1/2"	1"	1/2"	4-1/2"	1/2"	3/4"-10	2'0"				
800	10	1	2			B	2	3	T	S	O	E		1-1/8"	2-3/4"	5-1/2"	1"	1/2"	4-1/2"	1/2"	3/4"-10	2'0"				
1000	10	1	2		R	B	2	3	T	S	O	M		1-1/8"	2-3/4"	6"	1"	5/8"	4-3/4"	5/8"	3/4"-10	2'0"				
1500	25	1	2			B	2	3	T	S	O	M	E	2"	3-1/2"	6-3/4"	1"	3/4"	5-3/4"	3/4"	3/4"-10	5'0"				
2500	25	1	2			B		4	T	S	O	M	E	4-1/2"	6-1/2"	6-3/4"	1"	3/4"	5-3/4"	3/4"	7/8"-9	5'0"				
5000	25	1	2			B			T	S	O	M	E	7-1/8"	10-1/8"	6-3/4"	1"	3/4"	5-3/4"	3/4"	1"-8	2'0"				

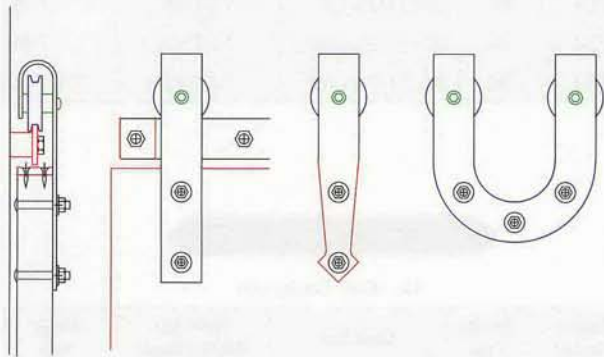




Overhead Sliding Door Track up to 5,000 Pound Doors



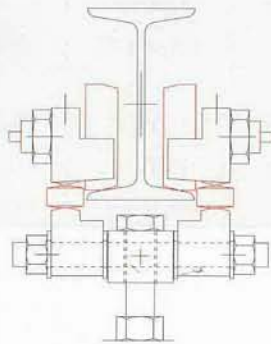
For #4, #5, #6, #8, and #10 track, mounting brackets should be spaced at 2'0" on center. For #25 track, doors up to 2,500 lbs., mounting brackets must be spaced no further than 5'0" on center. For doors weighing 2,500 lbs. to 5,000 lbs., brackets must be spaced 2'0" on center. Curved track and switches available for #5, #25 and I-Beam tracks.



Flat Track up to 800 Pound Doors

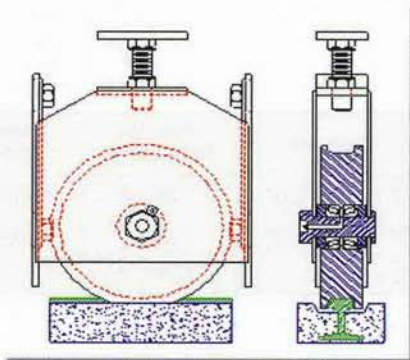
Flat track door hardware is for single sliding or bi-parting door applications. This track is made of flat steel bar and is held off the wall with spacers. Various sizes, finishes and styles are available. Specify door thickness and model number.

Model #		Capacity per door
43H	Standard Hanger	400 lbs.
43H-DEC	Decorative Hanger	400 lbs.
43U	Horseshoe Hanger	500 lbs.
102	Heavy Duty Hanger	800 lbs.
102-DEC	Heavy Duty Decorative Hanger	800 lbs.



Up to 8,000 I-Beam Trolley

The I-Beam Trolley is used for doors up to 8,000 pounds and is supported from the top. This track is a standard steel I-Beam.



Bottom Roller For Doors and Gates up to 64,000 lbs.

Bottom Rollers are machined from solid steel plate wheels for durability and strength. The wheels are built into the door or gate, run on standard railroad track and can provide strong floor support for very heavy doors or gates.

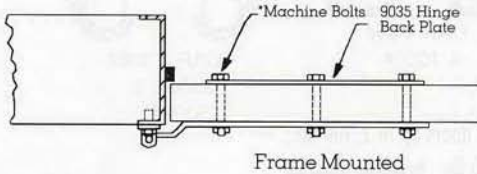
Part #	Vertical load lbs.	Thrust load lbs.	Max. door size sq. ft.	Max. rail size
CR-6	7,500	3,000	250	20#
CR-9	10,999	4,000	400	25#
CR-12	16,000	5,000	500	30#
CR-15L	16,000	5,000	500	30#
CR-15H	27,000	11,000	750	40#
CR-18	33,000	22,000	1,000	80#
CR-24	64,000	22,000	1,000+	100#



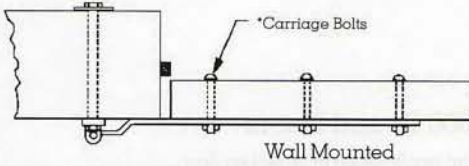
NUMBER 9035 STANDARD STRAP HINGES



No. 9035 Backplate



Frame Mounted



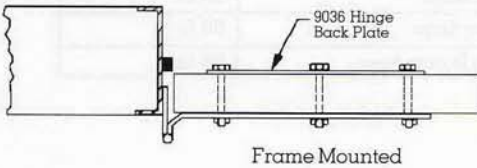
Wall Mounted

Catalog Number	Bearing Type	Strap Size	Pintle Size Width x Height	Weight Each
9035-P208	Disc	19" x 2 1/2" x 1/4"	1 3/4" x 8"	5 1/2 lbs.
9035-P209	Disc	24" x 2 1/2" x 1/4"	1 3/4" x 8"	6 1/2 lbs.
9035-P210	Disc	30" x 2 1/2" x 5/16"	1 3/4" x 8"	8 1/2 lbs.
9035-P211	Disc	36" x 2 1/2" x 5/16"	1 3/4" x 8"	10 lbs.
9035-P213	Ball	19" x 2 1/2" x 1/4"	1 3/4" x 8"	6 lbs.
9035-P214	Ball	24" x 2 1/2" x 1/4"	1 3/4" x 8"	7 lbs.
9035-P215	Ball	30" x 2 1/2" x 5/16"	1 3/4" x 8"	9 lbs.
9035-P216	Ball	36" x 2 1/2" x 5/16"	1 3/4" x 8"	10 1/2 lbs.

NUMBER 9036 STANDARD STRAP HINGES



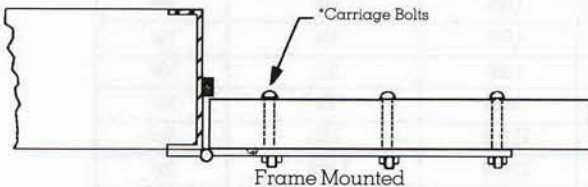
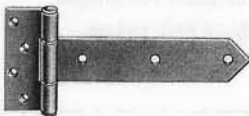
No. 9036 Backplate



Frame Mounted

Catalog Number	Bearing Type	Strap Size	Pintle Size Width x Height	Weight Each
9036-P31	Disc	18" x 2 1/2" x 3/16"	2 3/4" x 6"	4 1/4 lbs.
9036-P32	Disc	24" x 2 1/2" x 3/16"	2 3/4" x 6"	5 lbs.
9036-P34	Disc	36" x 3" x 1/4"	2 11/16" x 7"	9 lbs.
9036-P37	Ball	18" x 2 1/2" x 3/16"	2 3/4" x 6"	4 3/4 lbs.
9036-P38	Ball	24" x 2 1/2" x 3/16"	2 3/4" x 6"	5 1/2 lbs.
9036-P40	Ball	36" x 3" x 1/4"	2 11/16" x 7"	9 1/2 lbs.

NUMBER 9047 STANDARD STRAP HINGES



Frame Mounted

Catalog Number	Bearing Type	Strap Size	Pintle Size Width x Height	Weight Each
9047-P9	Disc	18" x 2 1/2" x 3/16"	2 5/8" x 6"	3 1/4 lbs.
9047-P10	Disc	24" x 2 1/2" x 3/16"	2 5/8" x 6"	4 1/4 lbs.
9047-P12	Disc	36" x 3" x 1/4"	2 5/8" x 7"	9 lbs.

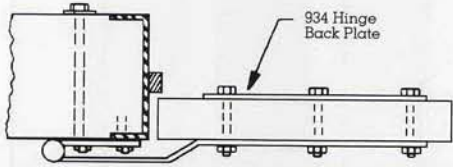




**NUMBER 934-B STRAP HINGE**



No. 934 Backplate

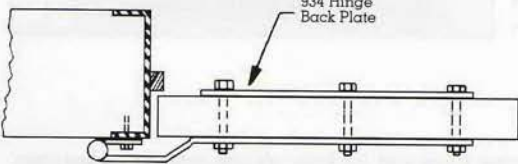


Catalog Number	Bearing Type	Strap Size	Pintle Size Width x Height	Weight Each
934-P302	Disc	3/8" x 3" x 33 1/2"	9 1/2" x 7"	24 lbs.
934-P312	Disc	1/2" x 4" x 33 1/2"	9 1/2" x 9"	47 lbs.
934-P318	Ball	3/8" x 3" x 33 1/2"	9 1/2" x 8"	25 lbs.
934-P325	Ball	1/2" x 4" x 33 1/2"	9 1/2" x 10"	48 lbs.

**NUMBER 934-F STRAP HINGE**

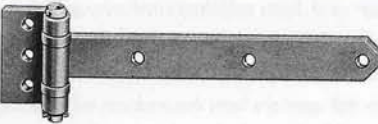


No. 934 Backplate

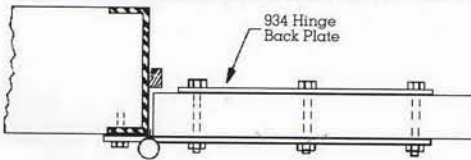


Catalog Number	Bearing Type	Strap Size	Pintle Size Width x Height	Weight Each
934-P308	Disc	3/8" x 3" x 27 1/2"	3 1/4" x 7"	23 lbs.
934-P310	Disc	1/2" x 4" x 27 1/2"	3 1/4" x 9"	46 lbs.
934-P323	Ball	3/8" x 3" x 27 1/2"	3 1/4" x 8"	24 lbs.
934-P331	Ball	1/2" x 4" x 27 1/2"	3 1/4" x 10"	47 lbs.

**NUMBER 934-FW STRAP HINGE**



No. 934 Backplate

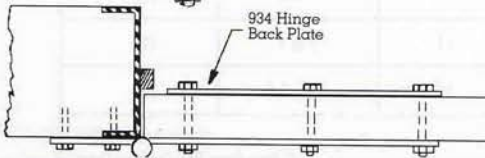


Catalog Number	Bearing Type	Strap Size	Pintle Size Width x Height	Weight Each
934-P280	Disc	3/8" x 3" x 24"	3 1/4" x 7"	20 lbs.
934-P284	Disc	1/2" x 4" x 24"	3 1/4" x 9"	43 lbs.
934-P288	Ball	3/8" x 3" x 24"	3 1/4" x 8"	21 lbs.
934-P292	Ball	1/2" x 4" x 24"	3 1/4" x 10"	44 lbs.

**NUMBER 934-W STRAP HINGE**



No. 934 Backplate



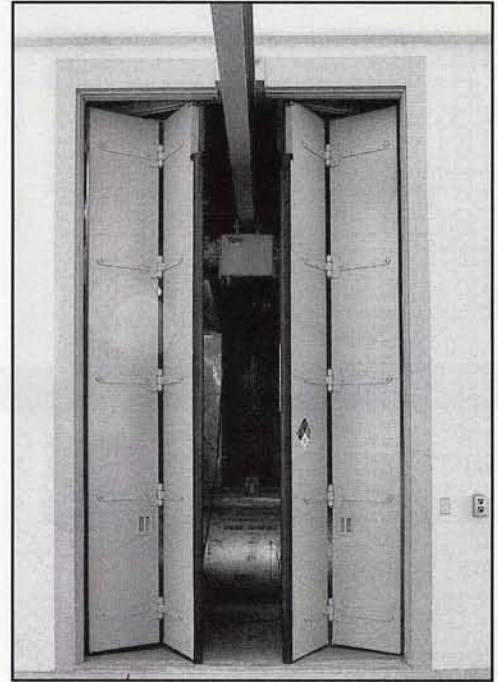
Catalog Number	Bearing Type	Strap Size	Pintle Size Width x Height	Weight Each
934-P282	Disc	3/8" x 3" x 24"	9 1/2" x 7"	21 lbs.
934-P286	Disc	1/2" x 4" x 24"	9 1/2" x 9"	44 lbs.
934-P290	Ball	3/8" x 3" x 24"	9 1/2" x 8"	22 lbs.
934-P294	Ball	1/2" x 4" x 24"	9 1/2" x 10"	45 lbs.

Custom Design and Sizes also Available





The Auto-o-doR Number 1500 operator is designed for slide-folding doors opening to the right or left, one operator being required for two doors to one jamb. The unit provides both quiet and fast door operation. The number 1500 operator is available in 1/2 and 1 hp models for single or three-phase operation for standard openings. In addition, the 1 hp model can be furnished with an extra heavy duty gear reducer if desired for extra large openings. For best all around performance, three-phase operation is highly recommended. Over-load and under-load protection is provided. The operator is attached to the inside face of the door. For doors opening out, the operator is attached to the outside face and requires a weather resistant cover.



Architectural Specifications

Heavy Duty Model

Aut-o-doR Model #1501/1500 Electric door operator shall be built into a compact unit consisting of an instantly reversing motor, a precision made speed reduction mechanism with "V" belt and pulleys, a safety friction disc clutch, an emergency release, fully automatic limit switches and a heavy duty crank and connecting arm assembly. The motor shall have ample reserve power to take occasional overloads. This operator is manufactured by Crown Industrial Operators, 213 Michelle Ct., So. San Francisco, CA 94080 (650)952-5150.

All gears in the speed reduction mechanism shall be cut gears. Shafts and gears shall be mounted with long-life bearings enclosed in an oil tight housing and operate at all times in a bath of lubricant. The automatic limit switch which stops the doors in the desired open or closed position shall be built on the reduction unit. The operating levers shall consist of heavy duty crank and connecting arms. This operator unit shall produce the harmonic motion principle of operation that will start in a gradual manner with high torque increasing to a rapid speed in the middle of the cycle of travel, then gradually slowing down to the stop position. When the doors are in closed position, the arms shall be in a locked position. The crank arm shall be driven by a safety friction disc clutch which shall protect the equipment in case the door comes in contact with an obstruction. A disconnecting device shall be provided to allow manual operation. Warranted for 1 year after installation. THE WARRANTY DOES NOT LIMIT THE NUMBER OF GATE CYCLES PER HOUR.

Extra Heavy Duty Model

Aut-o-doR Model #1500EXHD Electric door operator shall be built into one compact unit mounted on a heavy steel base. The unit shall consist of a low speed, high torque right angle combination gearhead instantly reversing motor, a safety disc clutch, an emergency release, fully automatic limit switches and a heavy duty crank and connecting arm assembly. This operator shall be manufactured by Crown Industrial Operators, 213 Michelle Ct. So. San Francisco, CA 94080 (650)952-5150.

The gear reducer shall be built as one unit with two stages of reduction. The first stage shall consist of a pair of continuous tooth herringbone gears cut of chrome molybdenum steel and properly heat treated. The second stage shall consist of carefully cut carburized worm and a S.A.E. 65 bronze worm gear. The anti-friction bearings shall be the highest quality ball bearings on the motor shaft and tapered roller bearings on all slow speed shafts. All gears and bearings shall operate in a bath of oil. Leakage of oil shall be prevented by the double type oil seals around motor shaft and countershaft.

The automatic limit switch which stops the door in the fully open or closed position shall be securely built to the gear reducer. The operating levers shall consist of a heavy duty crank arm and connecting arm which shall produce the harmonic motion principle of operation that will start in a gradual manner with high torque increasing to a rapid speed in the middle of the cycle of travel, then gradually slowing down to the stop position. When the door is in a closed position, the arms shall be in a locked position. The crank arm shall be driven by a safety friction disc clutch which shall protect the equipment in case the door comes in contact with an obstruction.

Warranted for 1 year after installation. THE WARRANTY DOES NOT LIMIT THE NUMBER OF GATE CYCLES PER HOUR.

Specs available on website www.crown-industrial.com

Table with 8 columns: Operator Size, Min. Opening Width, Max. Area Sq. Ft., Max. Weight lbs., Headroom Required Inches, Max. Projection From Door, Seconds Req. to Open Doors, and Approx. Shipping Weight lbs. It includes rows for 1/2 hp, 1 hp, and 1 hp models with various specifications.





Designed for use on either single doors or pairs of swinging doors, these operators provide reliable door control under heavy usage conditions. The Number 1501 operator is used one per door, and is available in 1/2 and 1 hp sizes for either single or three-phase current.

The doors are operated by a sturdy, simple crank and connecting arm movement using the harmonic motion principle for smooth, gradual starting and stopping.

A safety friction disc clutch drives the crank arm and helps protect doors, motors and others mechanisms from damage in case other door comes in contact with an obstruction. Door travel is controlled by automatic limit switches. When the doors are in a closed position, they are automatically locked. Manual operation is provided by a pull chain emergency release.

### Architectural Specifications

#### Heavy Duty Model

Aut-a-doR Model #1501 Electric door operator shall be built into a compact unit consisting of an instantly reversing motor, a precision made speed reduction mechanism with "V" belt and pulleys, a safety friction disc clutch, an emergency release, fully automatic limit switches and a heavy duty crank and connecting arm assembly. The motor shall have ample reserve power to take occasional overloads. This operator is manufactured by Crown Industrial Operators, 213 Michelle Ct., So. San Francisco, CA 94080 (650)952-5150.

All gears in the speed reduction mechanism shall be cut gears. Shafts and gears shall be mounted with long-life bearings enclosed in an oil tight housing and operate at all times in a bath of lubricant. The automatic limit switch which stops the doors in the desired open or closed position shall be built on the reduction unit. The operating levers shall consist of heavy duty crank and connecting arms. This operator unit shall produce the harmonic motion principle of operation that will start in a gradual manner with high torque increasing to a rapid speed in the middle of the cycle of travel, then gradually slowing down to the stop position. When the doors are in closed position, the arms shall be in a locked position. The crank arm shall be driven by a safety friction disc clutch which shall protect the equipment in case the door comes in contact with an obstruction. A disconnecting device shall be provided to allow manual operation. Warranted for 1 year after installation. THE WARRANTY DOES NOT LIMIT THE NUMBER OF GATE CYCLES PER HOUR.



San Francisco Opera House

#### Extra Heavy Duty Model

Aut-a-doR Model #1501EXHD Electric door operator shall be built into one compact unit mounted on a heavy steel base. The unit shall consist of a low speed, high torque right angle combination gearhead instantly reversing motor, a safety disc clutch, an emergency release, fully automatic limit switches and a heavy duty crank and connecting arm assembly. This operator shall be manufactured by Crown Industrial Operators, 213 Michelle Ct. So. San Francisco, CA 94080 (650)952-5150.

The gear reducer shall be built as one unit with two stages of reduction. The first stage shall consist of a pair of continuous tooth herringbone gears cut of chrome molybdenum steel and properly heat treated. The second stage shall consist of carefully cut carburized worm and a S.A.E. 65 bronze worm gear. The anti-friction bearings shall be the highest quality ball bearings on the motor shaft and tapered roller bearings on all slow speed shafts. All gears and bearings shall operate in a bath of oil. Leakage of oil shall be prevented by the double type oil seals around motor shaft and countershaft.

The automatic limit switch which stops the door in the fully open or closed position shall be securely built to the gear reducer. The operating levers shall consist of a heavy duty crank arm and connecting arm which shall produce the harmonic motion principle of operation that will start in a gradual manner with high torque increasing to a rapid speed in the middle of the cycle of travel, then gradually slowing down to the stop position. When the door is in a closed position, the arms shall be in a locked position. The crank arm shall be driven by a safety friction disc clutch which shall protect the equipment in case the door comes in contact with an obstruction. Warranted for 1 year after installation. THE WARRANTY DOES NOT LIMIT THE NUMBER OF GATE CYCLES PER HOUR.

Specs available on website [www.crown-industrial.com](http://www.crown-industrial.com)

Recommended Capacities of Number 1501 Operator and 1501EXHD											
Operator Size	Single Swing Door In or Out (1 unit)			Pair of Swing Doors In or Out (2 units)			Headroom Required		Projection of Operation from Door* inches	Seconds Req. to Open Doors	Approx. Shipping Weight lbs.
	Maximum			Maximum			Operator Mounted on Door inches	Operator Mounted Above Door Std—Spcl			
	Opening Width ft.	Area Sq. ft.	Weight /Door lbs.	Opening Width ft.	Area Sq. ft.	Weight /Door lbs.					
1/2	8	120	600	16	240	1200	3'	19"-9"	11	7 to 8	170
1 hp	12	210	1160	24	420	2300	3	19"-9"	11	7 to 8	195
• 1 hp	14	245	1350	28	490	2700+	3 1/2	24"--	16	13-14	525

\* It is often possible to cut a pocket in side wall to give necessary clearance  
 • EXTRA HEAVY GEAR UNIT

Note: Units are rated to operator in a max. wind pressure of 8 psf.





Crown sliding door operators are designed for hard usage in commercial and industrial applications with heavy traffic. The units are available in 1/2 and 1 hp sizes for either single-phase or three-phase current, with both overload and underload protection. For best all around performance, three-phase operation is highly recommended. Rugged Crown sliding door operators give you all these quality features:

- Gearhead motor; perfect drive alignment
- Dependable magnetic disc brake for positive door control
- Rugged motor base, supports, idler and door chain brackets
- Quality roller drive chain with minimum ultimate tensile strength to 6100 lbs.
- Reliable emergency release for manual operation
- Wide selection of optional custom door controls

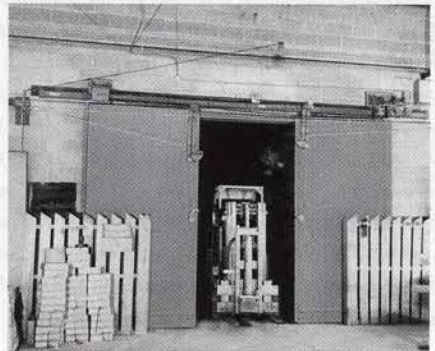
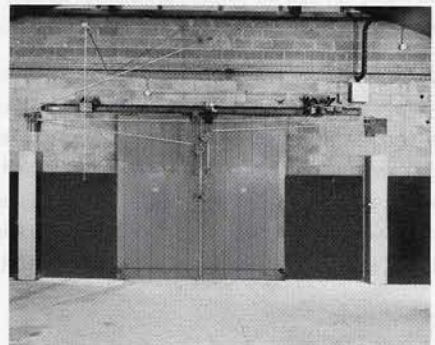
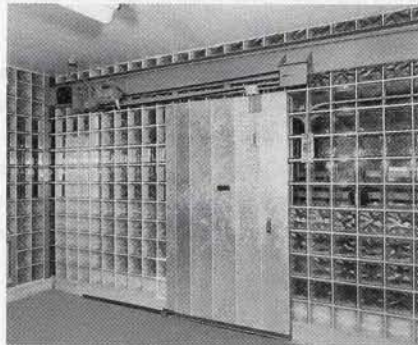
### Operation

The sliding door operators #1265 (for single doors) and #1266 (for bi-parting doors) utilize a continuous loop of heavy roller chain for control of door movement. The chain is driven by the drive sprocket of the power unit and held at the proper tension at the other end by an idler sprocket in a take-up wall bracket. Doors are attached to the chain with heavy duty brackets. An emergency release is attached to each bracket for manual operation.

### Door Speeds

For safety reasons and to keep operating noise to a minimum, doors should not move faster than 60 feet per minute (12 inches per second). Crown speed standards have been established as follows:

- #1265: Openings up to 8 feet wide 45 fpm (9 ips)  
Openings 8 feet wide and over 60 fpm (12 ips).
- #1266: Openings up to 10 feet wide 45 fpm (9 ips)  
Openings 10 feet wide and over 60 fpm (12 ips).



Number 1265/1266 Sliding Door Operator Capacities

Operator Size	Maximum Door Area Square Feet	Maximum Door Weight Pounds Single or Bi-Parting		Approximate Shipping in Weight Pounds	
		Width to 8'0" (No. 1265) Width to 10'0" (No. 1266)	8'0" & over (No. 1265) 10'0" & over (No. 1266)	(No. 1265)	(No. 1266)
1/2 hp	200	1500	1250	330	335
1 hp	380	3000	2500	375	390

Above capacities are for standard box type track hardware, such as I-beam, bottom-supported, or #25 track, consult factory for data. For heavier doors or special speeds, consult factory





Electrically operated sliding curved door  
Berkley Fire Station, Berkley, CA



Electrically operated telescoping doors  
Kona Kai Hotel, San Diego, CA

### Architectural Specifications

Aut-o-dor Model #1265/1266 electric door operator shall be built into a compact unit mounted on a heavy steel base. This operator is manufactured by Crown Industrial Operators, 213 Michelle Ct., So. San Francisco, CA Phone (650)952-5150.

The unit shall consist of a right angle gearhead reversing motor, magnetic brake, safety disc clutch (optional galvanized weather hood), NEMA rated starter with silver to silver contacts, and a chain driven geared type automatic limit switch. Reversing starter with overload and underload protection, shall have capability of instantly reversing without causing damage to its components. Current may be 3 phase or single phase. 3 phase is recommended.

The gear head motor and magnetic unibrake shall be assembled as one unit with one stage of reduction. The gear motor housing shall be of all cast iron construction. Worms shall be rolled from solid blanks of high alloy 8620 steel. Worms receive polishing treatment to maximize efficiency. Seal contact area is super finished. Output shafts of "stressproof" 1045 alloy, minimum 100,000 psi yield, shall be mounted on heavy duty tapered roller bearings. Double lip oil seals on the output shaft shall operate on super finished shaft areas to assure oil retention and contaminant exclusion. The magnetic brake with its easily adjustable feature shall be assembled to the motor to make a compact and efficient unit. The automatic limit switch, stops the doors in the fully open or closed position, shall be the precision built gear type which is to be operated with a chain drive from the counter shaft of the gearhead motor. The door shall be driven with high quality self-adjusting No. 52 roller chain with a minimum ultimate strength of 6100 lbs. and heavy brackets to the door. A simple releasing feature shall be supplied in case of power failure. The chain shall be driven from a heavy duty dependable safety friction disc clutch on the gearhead motor's counter shaft. This safety clutch shall protect equipment in case the door comes in contact with an obstruction.

Guarantee: Warranted for 1 year after installation. THE WARRANTY DOES NOT LIMIT THE NUMBER OF GATE CYCLES PER HOUR.

Specs available on website [www.crown-industrial.com](http://www.crown-industrial.com)



### Controls

Today's need for efficient automatic door or gate operation requires a variety of control systems and safety devices. Crown engineering staff has developed a cost-effective line of control systems that are readily adaptable to these requirements. Crown controls are designed for the use with their high quality operators, which accept every conceivable control arrangement. These include switches, timers, loop detectors and photoelectric beams. In addition, Crown can build custom engineered control systems and can supply non standard controls.





For more than 30 years, Crown Industrial, has provided complete door systems for industrial and commercial applications. Our engineers are known for meeting the challenge. We can design complete door systems and provide shop drawings and specifications. We can provide installation or a "working superintendent" for your job. Let our experienced engineers simplify your project.



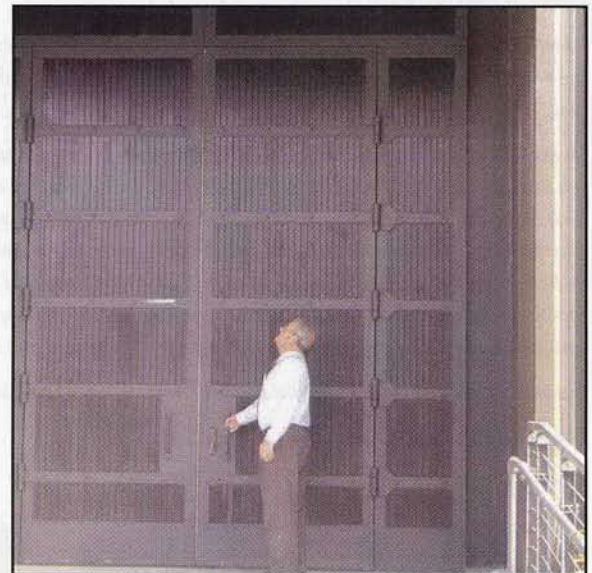
Electrically Operated #1265 Operator  
Bi-Parting Telescoping Wood Framed, Glass Doors (18' Tall)  
Maui, HI Residence



#946 Super-Wood Doors  
Silverado Vineyard, Napa Valley, CA



#974 Steel Plate Sliding Doors  
Maritime Museum, Monterey, CA



DiRosa Art Preserve, Napa, CA  
#948 Steel Frame Door with Tongue and Groove Redwood Strips.



**CROWN  
INDUSTRIAL**

213 Michelle Ct.  
So. San Francisco CA 94080-6202  
Phone: (650)952-5150  
Fax: (650)873-1495  
e-mail: sales@crow-industrial.com  
website: www.crown-industrial.com  
DR101

CR 2000 Crown Industrial, Printed in U.S.A.

SEE US IN



CATALOG  
FILES

CD

SWEETS.COM

Distributor

