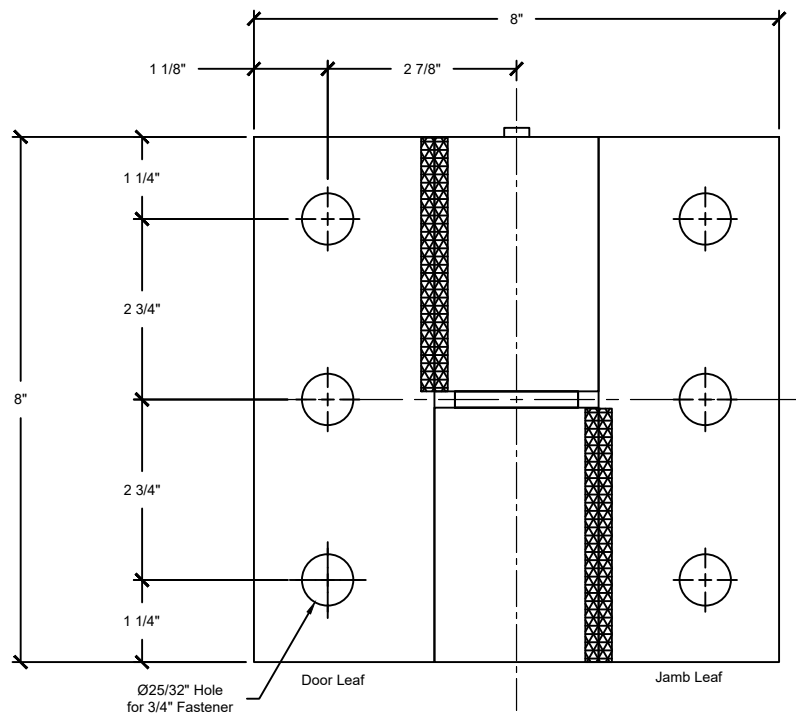
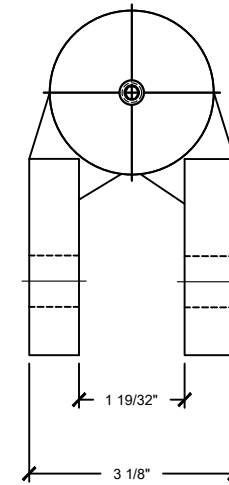


Radial Capacity: 1,630 lbs

THE INFORMATION CONTAINED IN THIS DRAWING IS THE SOLE PROPERTY OF CROWN INDUSTRIAL. ANY REPRODUCTION IN PART OR AS A WHOLE WITHOUT WRITTEN PERMISSION OF CROWN INDUSTRIAL IS PROHIBITED.



www.crown-industrial.com

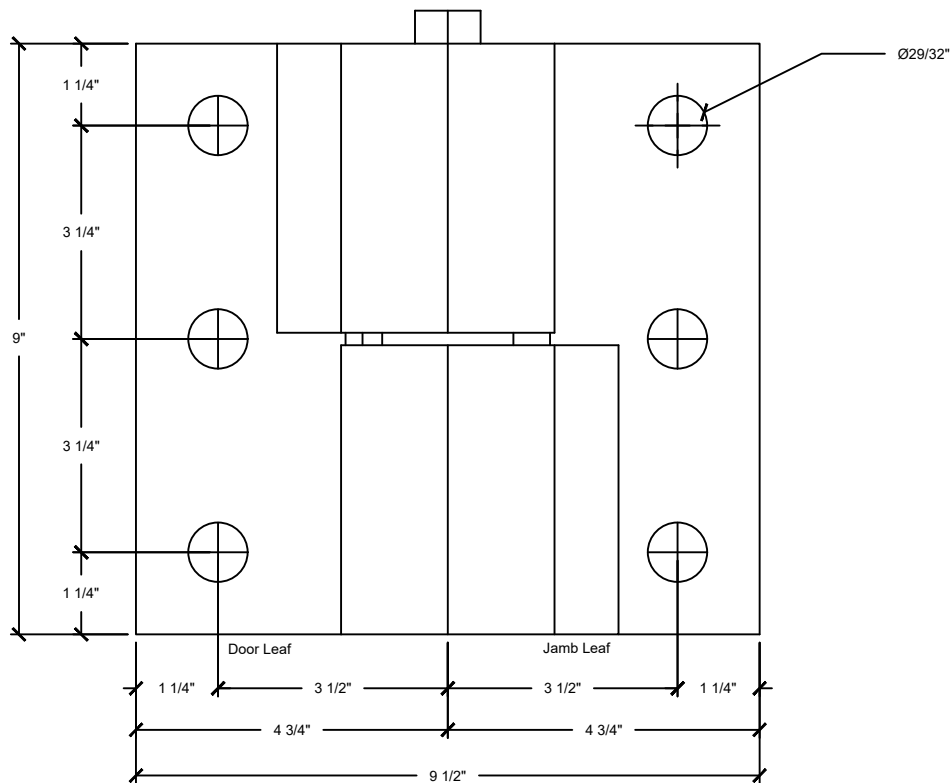
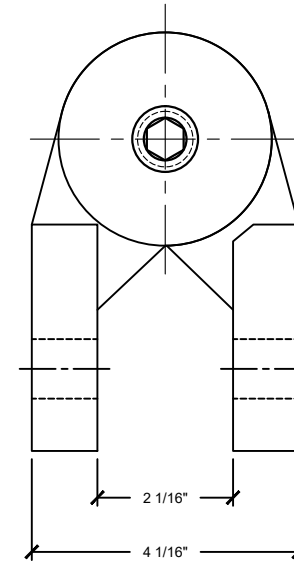
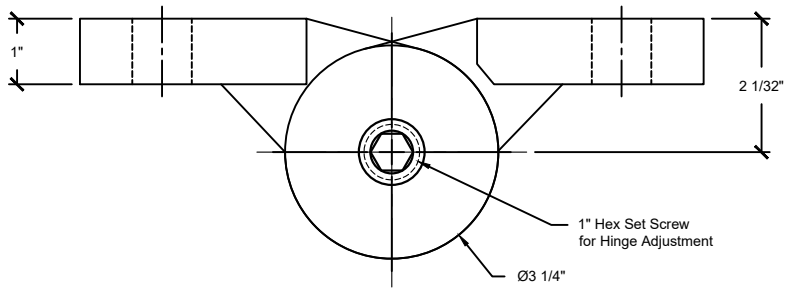


Thrust Capacity: 8,000 lbs
Radial Capacity: 3,300 lbs

THE INFORMATION CONTAINED IN THIS DRAWING IS THE SOLE PROPERTY OF CROWN INDUSTRIAL. ANY REPRODUCTION IN PART OR AS A WHOLE WITHOUT WRITTEN PERMISSION OF CROWN INDUSTRIAL IS PROHIBITED.



**CROWN
INDUSTRIAL**
So. San Francisco, Ca
(650) 952-5150
www.crown-industrial.com



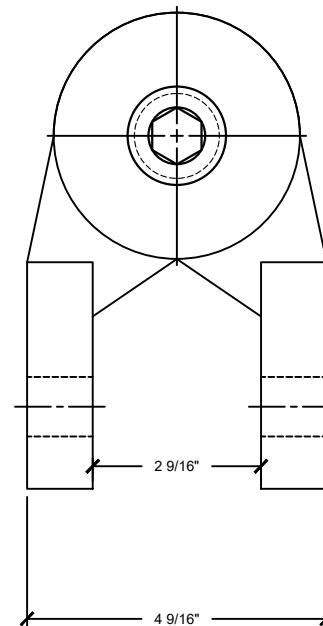
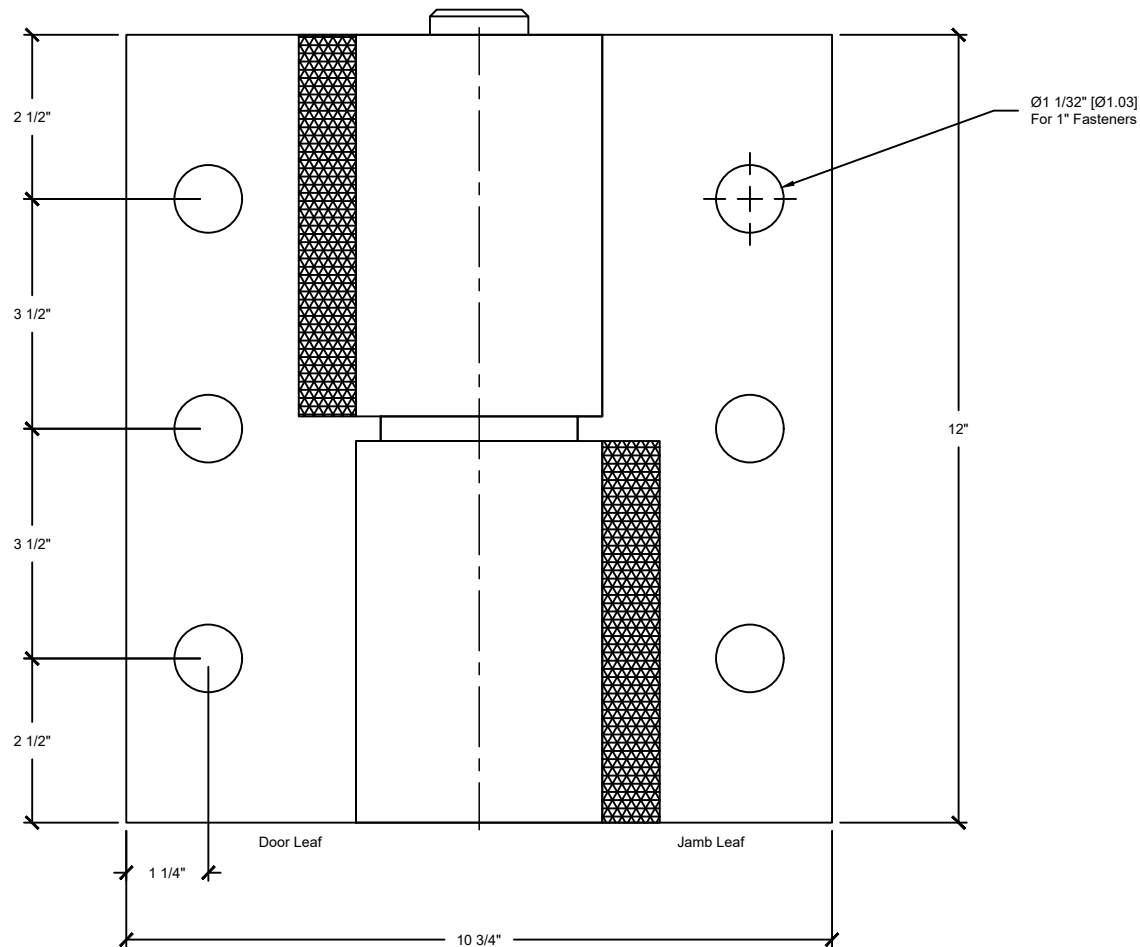
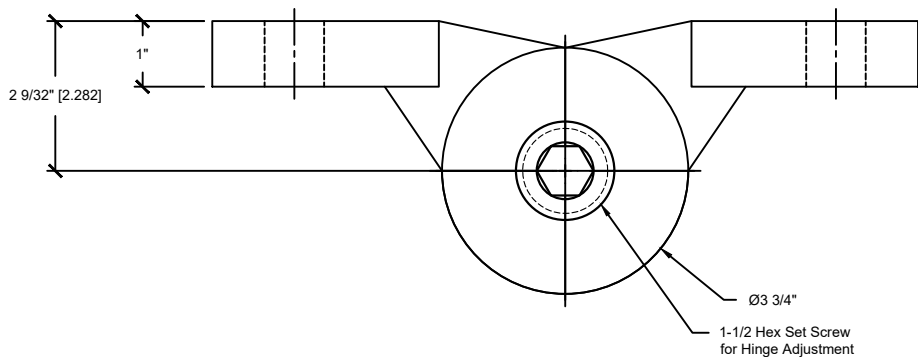
DWG #0003228
 DESCRIP: CBW PRECISION HINGES
 DRAWN:BCM 6-12-23 REV:-----
 SCALE: 4 13/128" = 1'-0"
 SHEET # CBW150

CBW #150 Left Hand Hinge Shown
 Thrust Capacity: 13,000 lbs
 Radial Capacity: 6,280 lbs

FILE:d:\vault\workspace\designs\hardware\precision hinges\cbw\0003228

THE INFORMATION CONTAINED IN THIS DRAWING IS THE SOLE PROPERTY OF CROWN INDUSTRIAL. ANY REPRODUCTION IN PART OR AS A WHOLE WITHOUT WRITTEN PERMISSION OF CROWN INDUSTRIAL IS PROHIBITED.


CROWN INDUSTRIAL
 So. San Francisco, Ca
 (650) 952-5150
 www.crown-industrial.com



DWG #0003228
 DESCRIP: CBW PRECISION HINGES
 DRAWN:BCM 6-12-23 REV:-----
 SCALE: 4 13/128" = 1'-0"
 SHEET # CBW200

CBW #200 Left Hand Hinge Shown
 Thrust Capacity: 20,000 lbs
 Radial Capacity: 8,800 lbs

FILE:d:\vault\workspace\designs\hardware\precision hinges\cbw\0003228

THE INFORMATION CONTAINED IN THIS DRAWING IS THE SOLE PROPERTY OF CROWN INDUSTRIAL. ANY REPRODUCTION IN PART OR AS A WHOLE WITHOUT WRITTEN PERMISSION OF CROWN INDUSTRIAL IS PROHIBITED.



CROWN INDUSTRIAL
 So. San Francisco, Ca
 (650) 952-5150
www.crown-industrial.com