

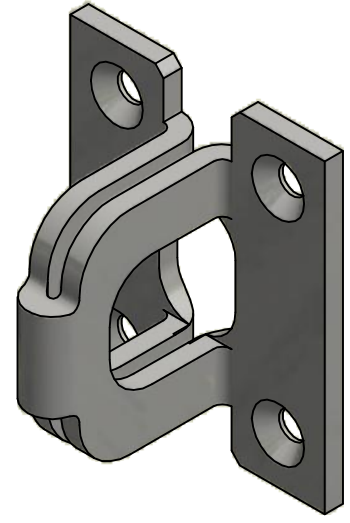
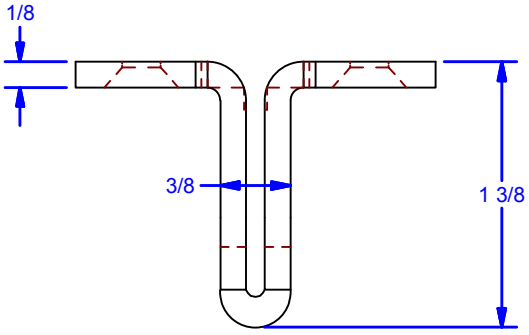
4 3 2 1

D

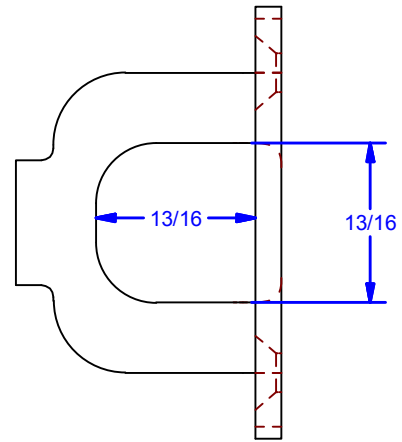
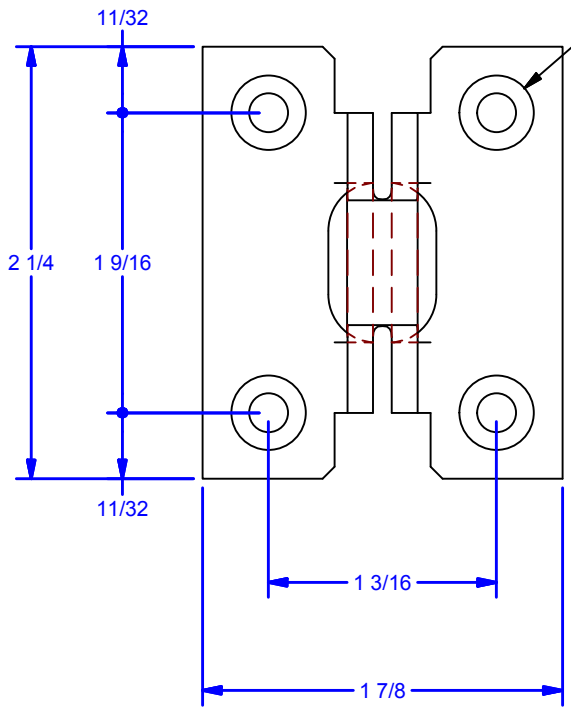
C

B

A



4X Countersunk Hole  
For #10 Flat Head Fastener  
(BY OTHERS)



DWG #: 0000831  
DRAWN:BCM 4/1/2018  
SHEET #1  
File: 0000831.idw

**Finish:**  
Clear Zinc: #0128.00014  
Black Zinc: #0128.00014-BZ

**ALL DIMENSIONS IN INCHES**

THE INFORMATION CONTAINED IN THIS DRAWING IS THE SOLE PROPERTY OF CROWN INDUSTRIAL. ANY REPRODUCTION IN PART OR AS A WHOLE WITHOUT THE WRITTEN PERMISSION OF CROWN INDUSTRIAL IS PROHIBITED.	ID #:	0002656	STOCK PART #:	128P14
	MATERIAL:	Steel, Mild		
DESCRIPTION: Latch Padlock Staple				
FINISH:	Zinc Plated	# PCS:	REV:	



**CROWN INDUSTRIAL**  
So. San Francisco, Ca  
(650) 952-5150  
www.crown-industrial.com

4 3 2 1