

4

3

2

1

D

D

C

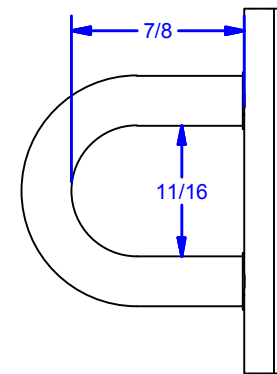
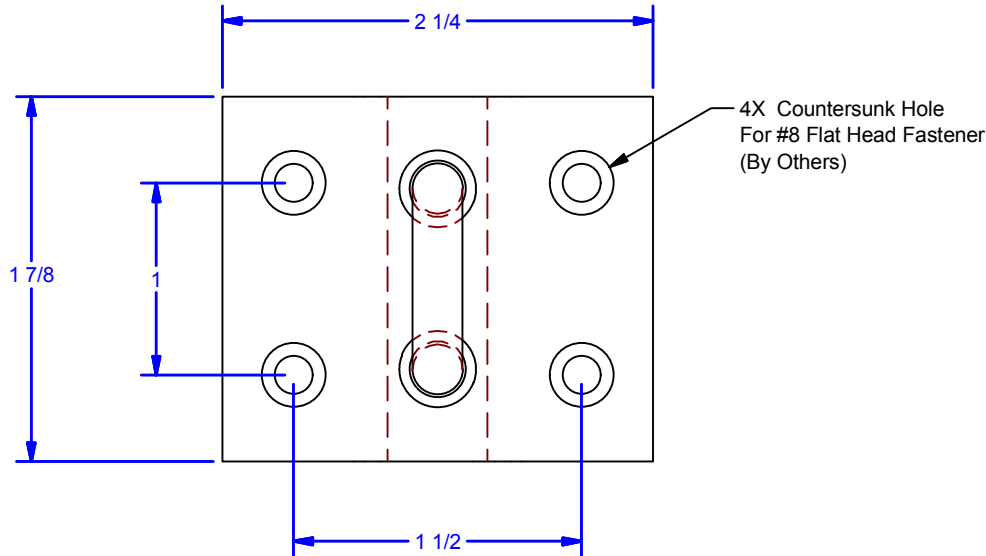
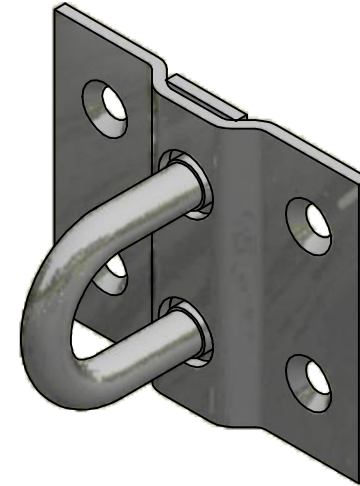
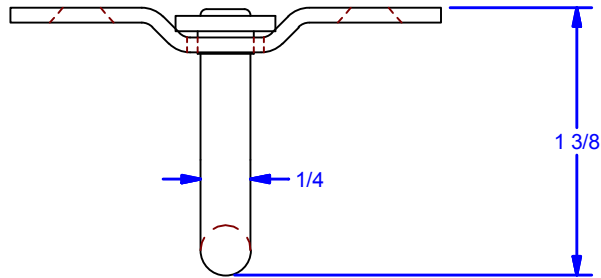
C

B

B

A

A



**Finish:**  
 Clear Zinc: #0128.00014A  
 Black Zinc: #0128.00014A-BZ

**ALL DIMENSIONS IN INCHES**

THE INFORMATION CONTAINED IN THIS DRAWING IS THE SOLE PROPERTY OF CROWN INDUSTRIAL. ANY REPRODUCTION IN PART OR AS A WHOLE WITHOUT THE WRITTEN PERMISSION OF CROWN INDUSTRIAL IS PROHIBITED.	ID #:	0000831	STOCK PART #:	128p14A
	MATERIAL:			
DESCRIPTION: Latch Padlock Staple				
FINISH: Zinc Plated			# PCS:	REV:

DWG #: 0000831  
 DRAWN:BCM 7/8/2010  
 SHEET #2  
 File: 0000831.idw



**CROWN INDUSTRIAL**  
 So. San Francisco, Ca  
 (650) 952-5150  
 www.crown-industrial.com

4

3

2

1

