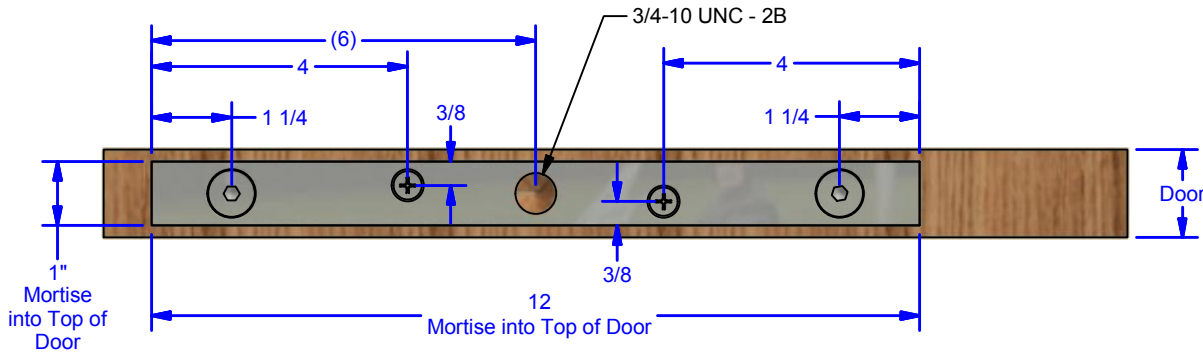


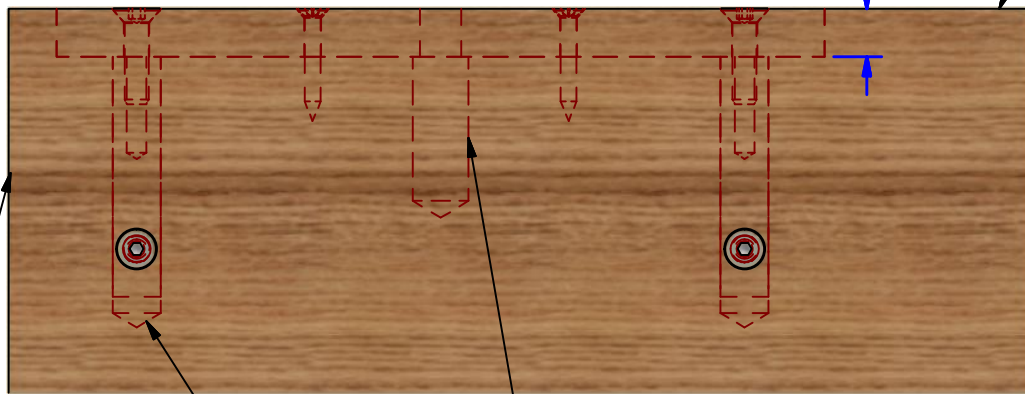
Parts List		
ITEM	QTY	DESCRIPTION
1	2	Hanger Cross Shaft
2	2	#14 FHPHWS (BY OTHERS)
3	2	Hanger Shaft
4	1	Top Plate, 1-3/8" Thick Door, 3/4" pendant
5	2	3/8-16 x 1-1/2" FSHMS
6	4	5/16-18 x 5/8" FSHMS 18-8 S.S.



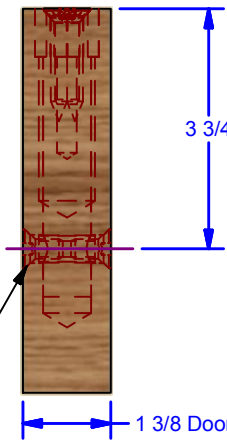
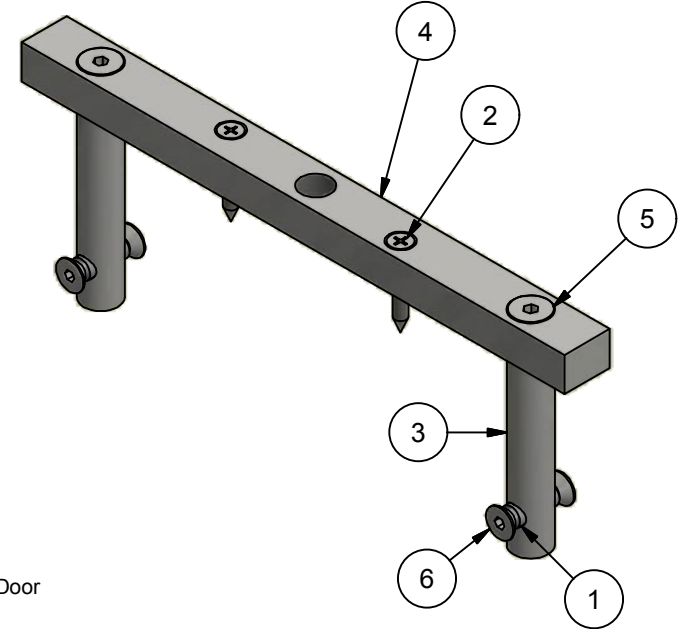
TOP

3/4 Mortise into Top of Door

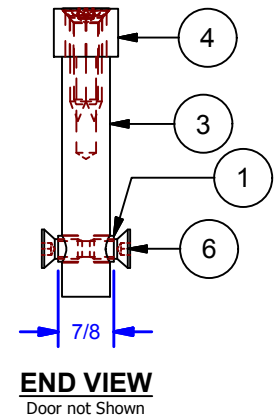
Top of Door



FRONT



END VIEW



ALL DIMENSIONS IN INCHES

THE INFORMATION CONTAINED IN THIS DRAWING IS THE SOLE PROPERTY OF CROWN INDUSTRIAL. ANY REPRODUCTION IN PART OR AS A WHOLE WITHOUT THE WRITTEN PERMISSION OF CROWN INDUSTRIAL IS PROHIBITED.	ID #:	STOCK PART #:
	0000368	135.75.100
DESCRIPTION:	MATERIAL:	
	Steel	
135 Top Plate Assembly, 3/4 Pendant, 1-3/8" Thick Door		
FINISH:	# PCS:	REV:
Ptd.	2	



CROWN INDUSTRIAL

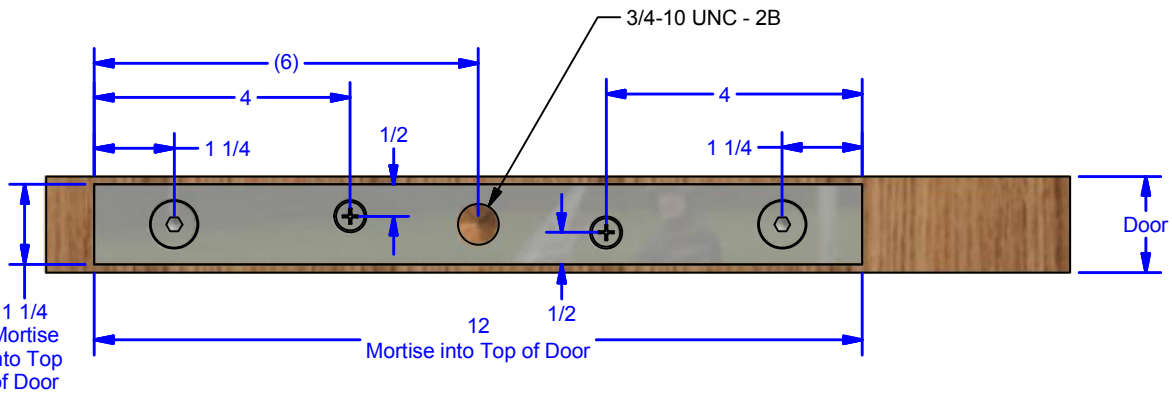
So. San Francisco, Ca
(650) 952-5150

www.crown-industrial.com

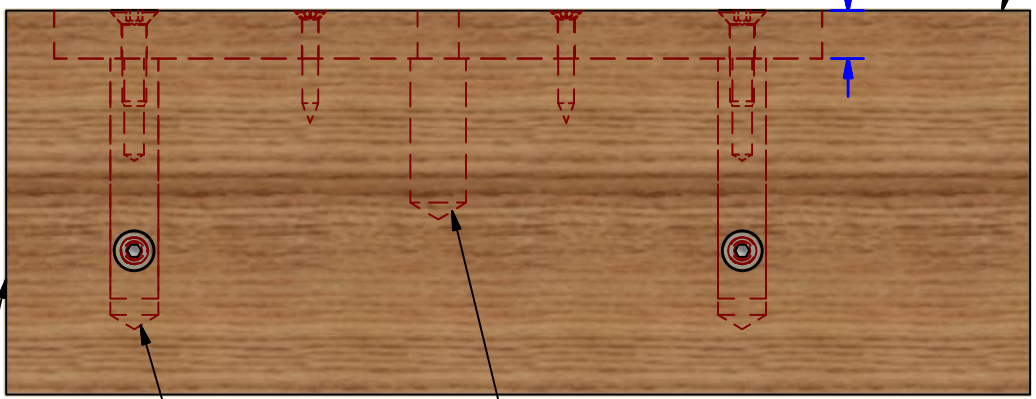
DWG #: 135
DRAWN: BCM 1/29/2009
SHEET #1

File: 0000368.idw

Parts List		
ITEM	QTY	DESCRIPTION
1	2	Hanger Cross Shaft
2	2	#14 FHPHWS (BY OTHERS)
3	2	Hanger Shaft
4	1	Top Plate, 1-1/2" to 2-1/4" Thick Door, 3/4" pendant
5	2	3/8-16 x 1-1/2" FSHMS
6	4	5/16-18 FSHMS 18-8 S.S.

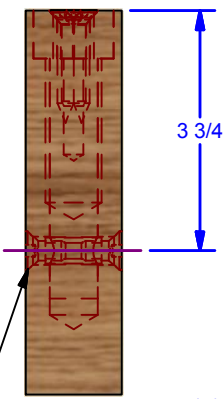
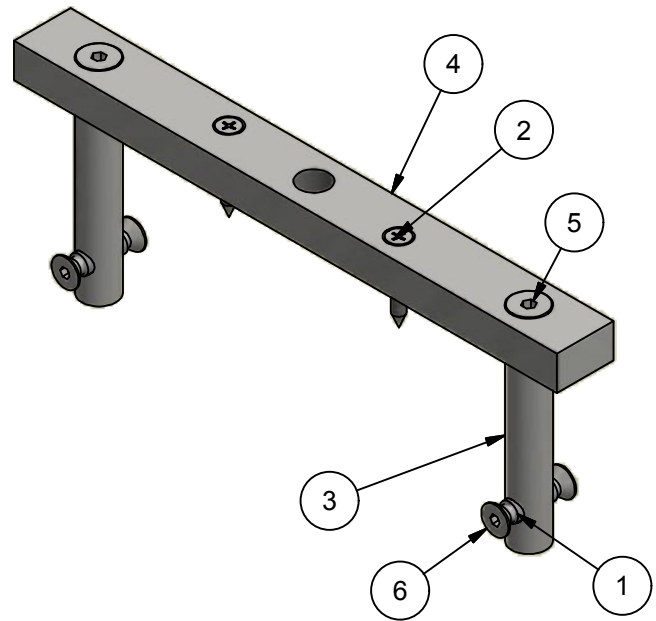


TOP

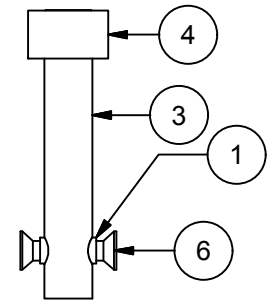


FRONT

SPECIFY DOOR THICKNESS



END VIEW



END VIEW
Door not Shown

ALL DIMENSIONS IN INCHES

THE INFORMATION CONTAINED IN THIS DRAWING IS THE SOLE PROPERTY OF CROWN INDUSTRIAL. ANY REPRODUCTION IN PART OR AS A WHOLE WITHOUT THE WRITTEN PERMISSION OF CROWN INDUSTRIAL IS PROHIBITED.	ID #:	STOCK PART #:
	0000421	135.75.125
DESCRIPTION:	MATERIAL:	
	Steel	
135 Top Plate Assembly, 3/4 Pendant, 1-1/2 to 2-1/4 Door		
FINISH:	# PCS:	REV:
Painted		



CROWN INDUSTRIAL
So. San Francisco, Ca
(650) 952-5150
www.crown-industrial.com

DWG #: 135
DRAWN:BCM 1/29/2009
SHEET #5
File: 0000368.idw

