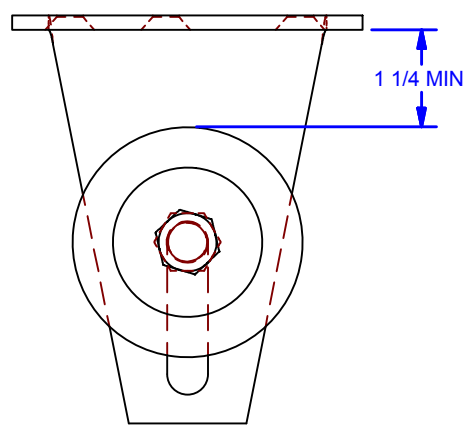
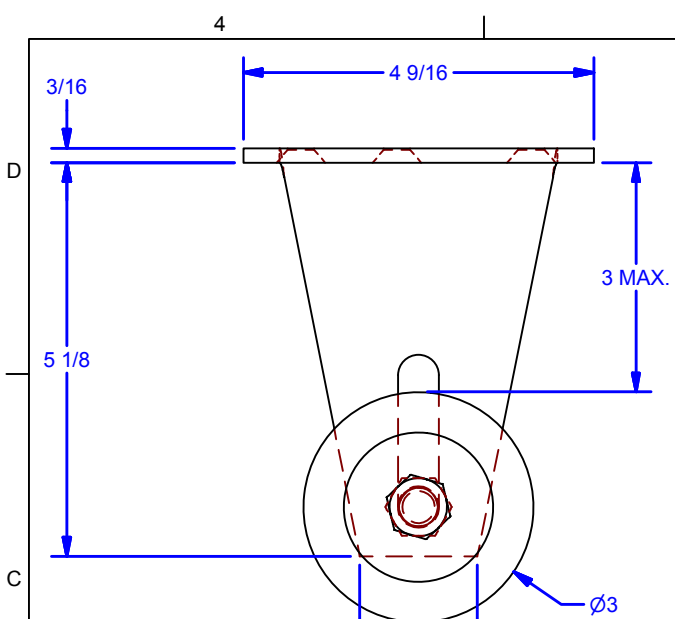
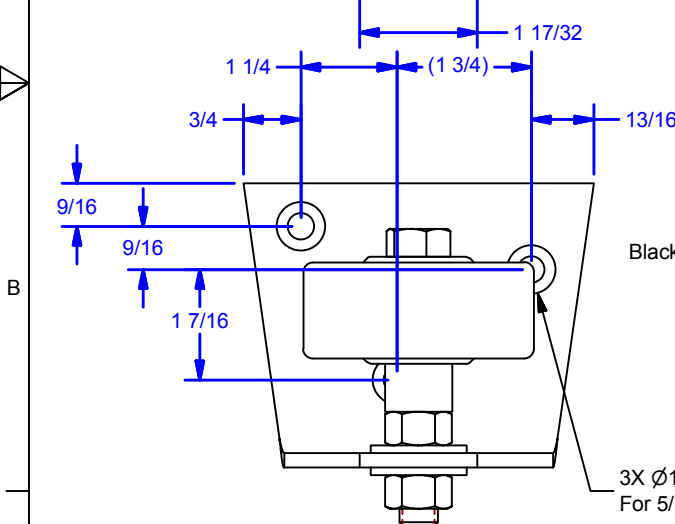


REVISIONS				
ZONE	REV	DESCRIPTION	DATE	BY
	A	Black Industrial Plastic Wheel	05-18-12	BCM

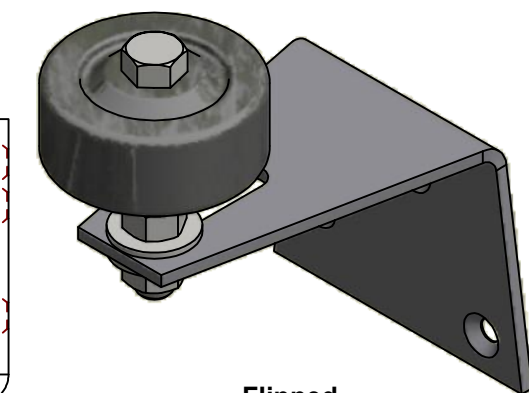
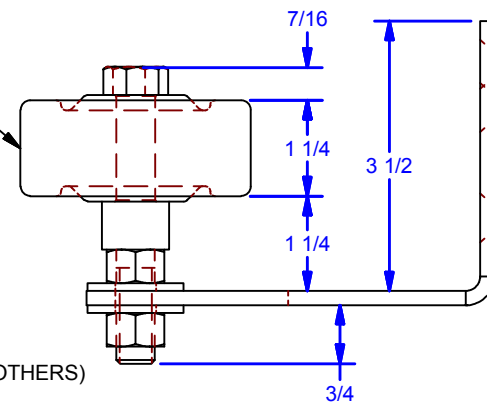


Standard



Black Phenolic (Plastic) Wheel

3X Ø11/32 Countersunk Hole
For 5/16 Flat Head Fasteners (BY OTHERS)



Flipped

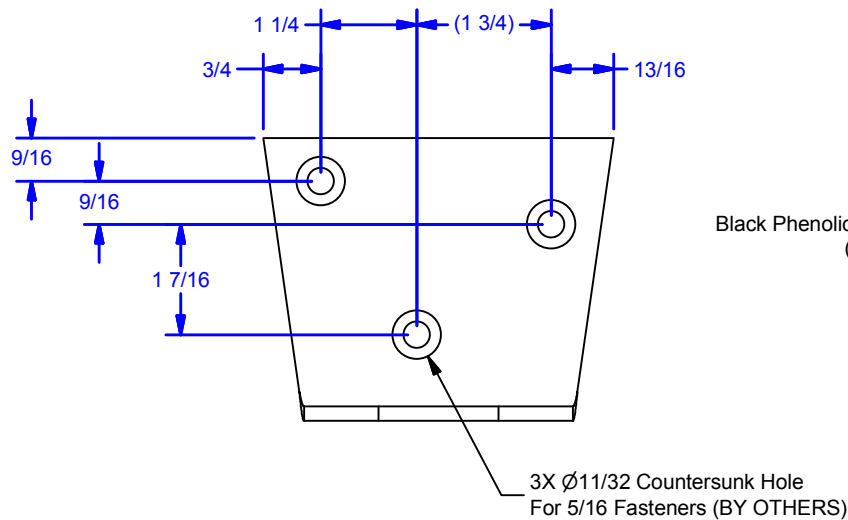
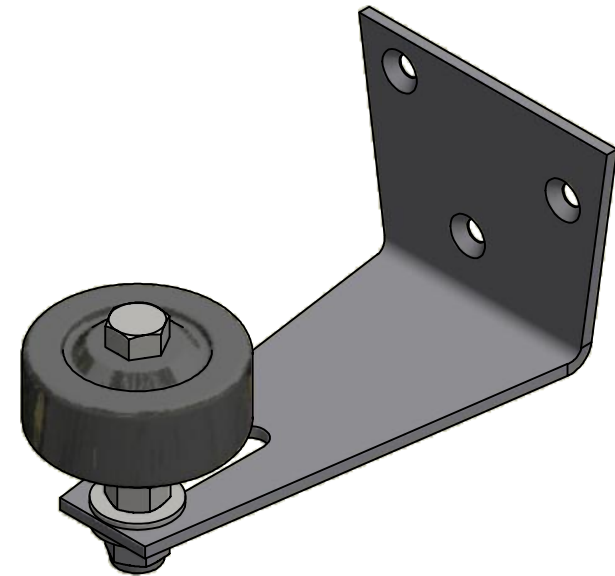
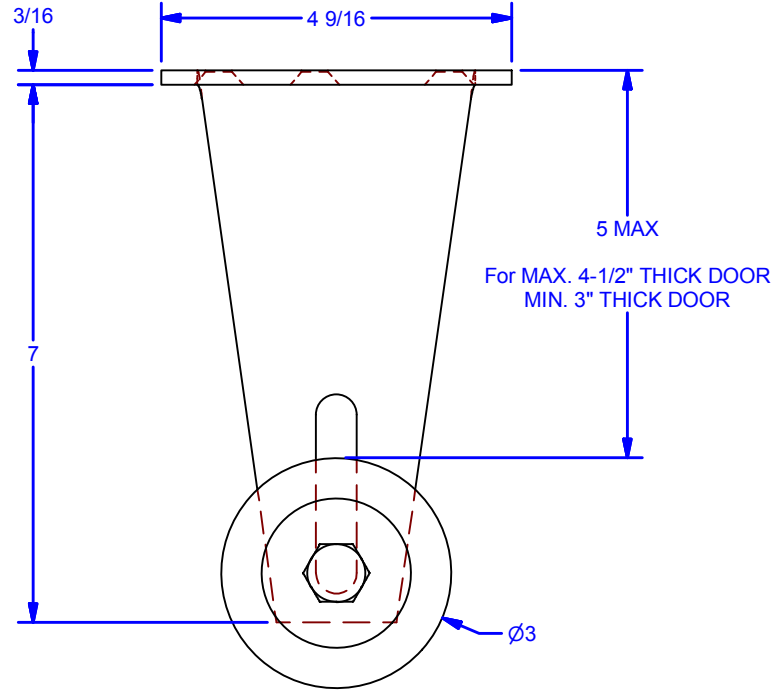
Available Finishes:
 0153.00005: Powder Coat Pebble Tan
 0153.00005SC: Powder Coat Black
 0153.00005ZC: Clear Zinc

DWG #: 0000320
 DRAWN: BCM 12/16/2008
 SHEET #1
 File: 0000320.idw

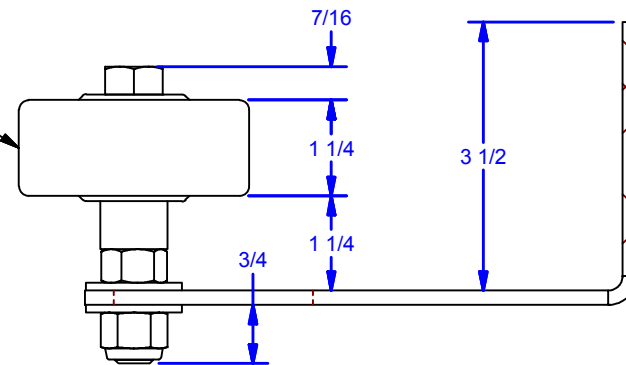
ALL DIMENSIONS IN INCHES			
THE INFORMATION CONTAINED IN THIS DRAWING IS THE SOLE PROPERTY OF CROWN INDUSTRIAL. ANY REPRODUCTION IN PART OR AS A WHOLE WITHOUT THE WRITTEN PERMISSION OF CROWN INDUSTRIAL IS PROHIBITED.		ID #: 0000320	STOCK PART #: 0153.00005
DESCRIPTION: 153 P5 Wall Mounted Stay Roller Assy. For 1-1/4" to 3" Thick Door		MATERIAL: Steel	
FINISH:	# PCS:	REV: A	

CROWN INDUSTRIAL
 So. San Francisco, Ca
 (650) 952-5150
 www.crown-industrial.com

REVISIONS				
ZONE	REV	DESCRIPTION	DATE	BY
	A	Black Industrial Plastic Wheel	05-18-12	BCM



Black Phenolic Wheel
(plastic)



FOR DOORS 3" to 4-1/2" THICK

ALL DIMENSIONS IN INCHES

THE INFORMATION CONTAINED IN THIS DRAWING IS THE SOLE PROPERTY OF CROWN INDUSTRIAL. ANY REPRODUCTION IN PART OR AS A WHOLE WITHOUT THE WRITTEN PERMISSION OF CROWN INDUSTRIAL IS PROHIBITED.	ID #:	0000662	STOCK PART #:	0153.00006ZC
	MATERIAL:			
DESCRIPTION: 153 P6 Wall Mounted Stay Roller Assy. For 3" to 4-1/2" Thick Door				
FINISH: Clear Zinc	# PCS:		REV:	A

DWG #: 0000320
DRAWN:BCM 12/16/2008
SHEET #2
File: 0000320.idw



CROWN INDUSTRIAL
So. San Francisco, Ca
(650) 952-5150
www.crown-industrial.com