

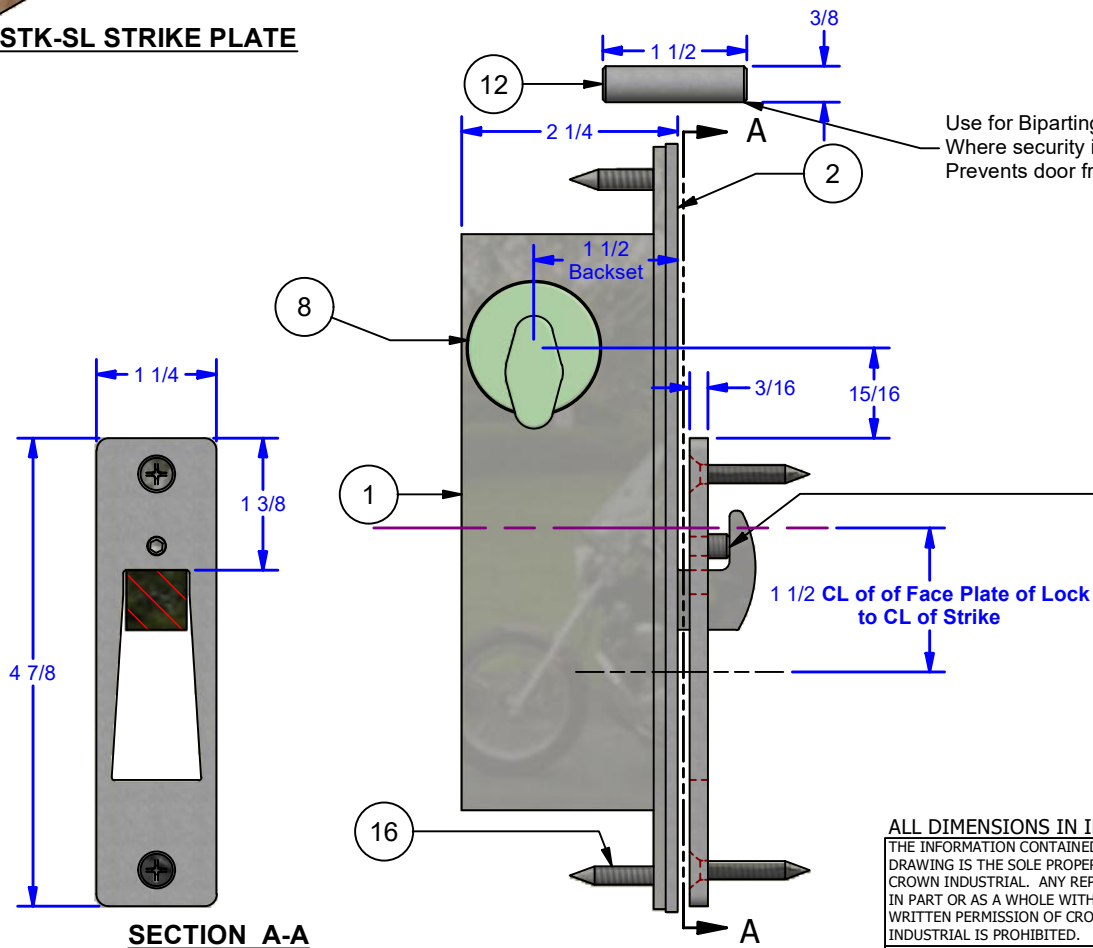
Parts List					
ITEM	QTY	PART #	DESCRIPTION	STOCK #	
1	1	0000383	Deadbolt Lock, 1-1/2" Backset	1850SN-050-xxx	
2	1	0000182	1850 Coverplate (Slide)	CR1850CP-SL	
6	2	0000388-03	Trim Ring x 1/8	TR1/8	
7	1	0000385	Cylinder	GMS-Mxxx-SC-xx-AR-A2	
8	1	0000384	Thumb Tum	GMS-MxxxT-SC-xx-AR	
12	1	0000363	1850 Biparting Lock Dowel Pin	0000363	
14	3	(FHPhMS) 8-32 x 1/4	Flat Head Phillips Head Machine Screw		
15	1	FHPSMS No. 12-14 x 1	#12 Flat Head Phillips Combination Fastener		
16	1	FHPSMS No. 10-16 x 1	Flat Head Phillips Sheet Metal Screw		
17	1	0001803	Strike Plate for 1850 Lock, Sliding	1850STK-SL	



CR1850STK-SL STRIKE PLATE



1850 DEADBOLT LOCK



Use for Biparting Applications
Where security is a concern.
Prevents door from being lifted off latch.

Stainless Steel Set Screw Provided: 1/4"-20x3/8".

INSTRUCTIONS: Adjust set screw for proper take-up, Apply Loctite #242 to set screw to keep in place.

PURPOSE: Allows adjustability to remove any slop between the hook lock and the strike plate. (Specific to #CR1850STK-SL Strike Plate Only)

SECTION A-A

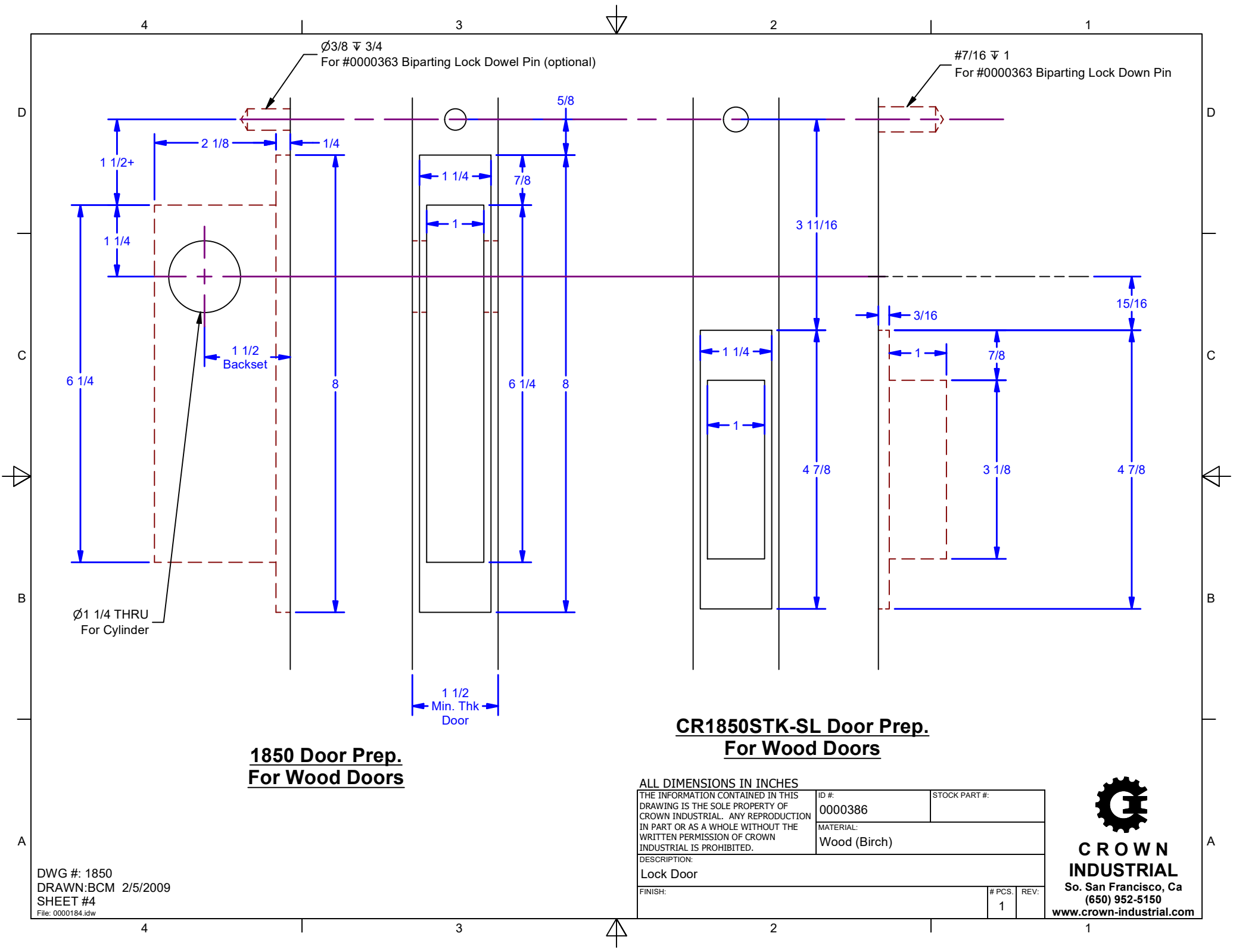
***NOTE:** Strike Plates, Strike Boxes, Thumb Turns, Cylinders, and/or Trim Rings are sold separately.

ALL DIMENSIONS IN INCHES

THE INFORMATION CONTAINED IN THIS DRAWING IS THE SOLE PROPERTY OF CROWN INDUSTRIAL. ANY REPRODUCTION IN PART OR AS A WHOLE WITHOUT THE WRITTEN PERMISSION OF CROWN INDUSTRIAL IS PROHIBITED.	ID #: 0000383	STOCK PART #:
DESCRIPTION: Deadbolt Lock Assembly, 1-1/2" Backset	MATERIAL:	
FINISH:	# PCS:	REV: A



CROWN INDUSTRIAL
So. San Francisco, Ca
(650) 952-5150
www.crown-industrial.com



**1850 Door Prep.
For Wood Doors**

**CR1850STK-SL Door Prep.
For Wood Doors**

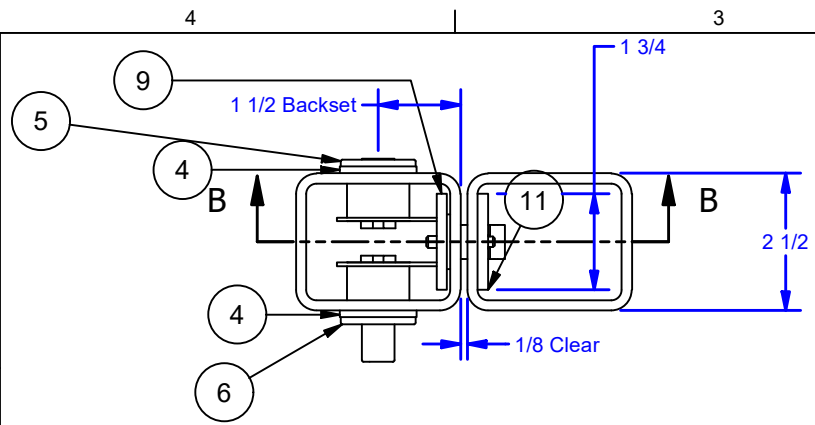
DWG #: 1850
DRAWN: BCM 2/5/2009
SHEET #4
File: 0000184.idw

ALL DIMENSIONS IN INCHES

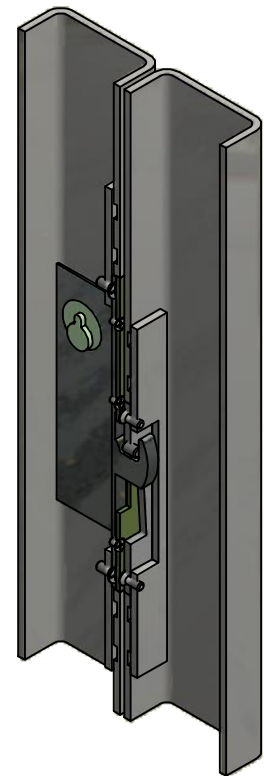
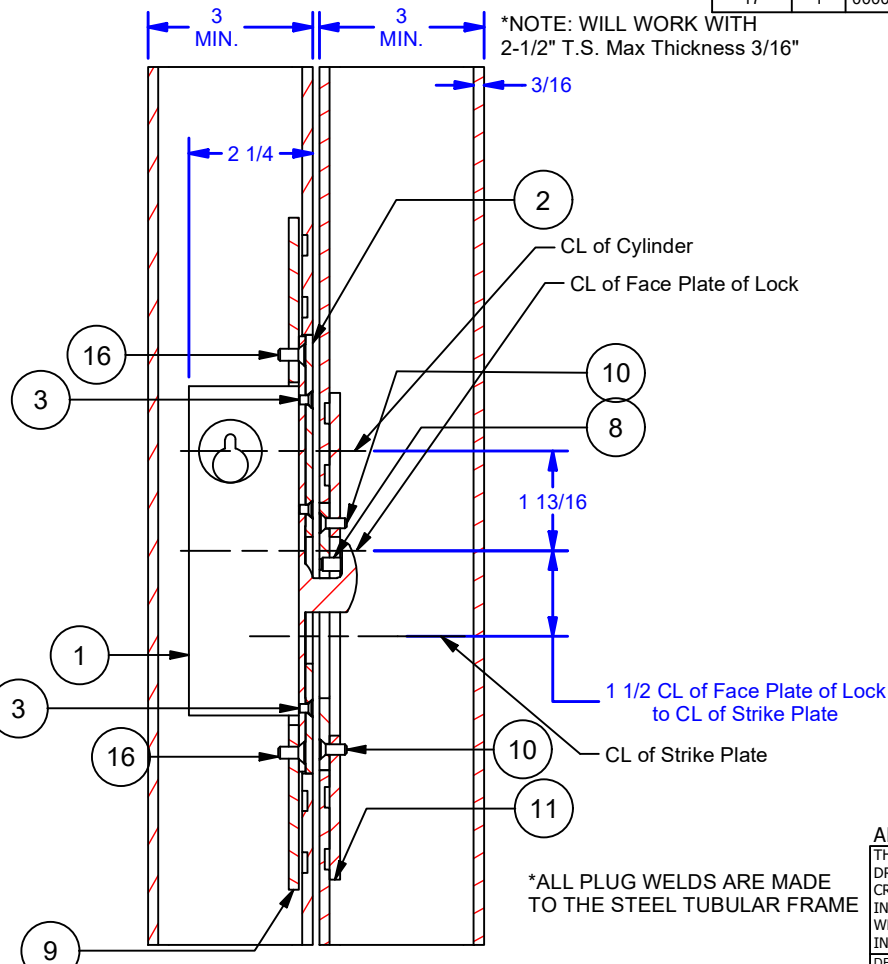
THE INFORMATION CONTAINED IN THIS DRAWING IS THE SOLE PROPERTY OF CROWN INDUSTRIAL. ANY REPRODUCTION IN PART OR AS A WHOLE WITHOUT THE WRITTEN PERMISSION OF CROWN INDUSTRIAL IS PROHIBITED.	ID #: 0000386	STOCK PART #:
	MATERIAL: Wood (Birch)	
DESCRIPTION: Lock Door		
FINISH:	# PCS: 1	REV:



CROWN INDUSTRIAL
So. San Francisco, Ca
(650) 952-5150
www.crown-industrial.com



Parts List				
ITEM	QTY	PART #	DESCRIPTION	STOCK #
1	1	0000383	Deadbolt Lock, 1-1/2" Backset	1850SN-050-xxx
2	1	0000182	1850 Coverplate (Slide)	CR1850CP-SL
3	3	ANSI B18.6.3 - 8-32 UNC x 0.25	#8-32 x 1/4" FHPHMS	
4	2	0000388-03	Trim Ring x 1/8	TR1/8
5	1	0000385	Cylinder	GMS-Mxxx-SC-xx-AR-A2
6	1	0000384	Thumb Turn	GMS-MxxxT-SC-xx-AR
8	1	1/4-20 UNC x 0.38	1/4" Stainless Steel Set Screw (Apply LOCTITE #242 when in correct position)	
9	1	0000558	1850 Lock Reinforcement Plate	
10	2	ANSI B18.6.3 - 10-24 x 1/2	#10-24 x 1/2" FHPHMS	
11	1	0000561	1850 Lock Strike Reinforcement Plate	
16	2	ANSI B18.6.3 - 12-24 x 1/2	#12-24 x 1/2" FHPHMS	
17	1	0000178-B	1850 Adjustable Strike Plate (Sliding)	CR1850STK-SL



***NOTE: Strike Plates, Strike Boxes, Thumb Turns, Cylinders, and/or Trim Rings are sold separately.**

DWG #: 1850
 DRAWN:BCM 2/5/2009
 SHEET #5
 File: 0000184.idw

SECTION B-B

ALL DIMENSIONS IN INCHES

THE INFORMATION CONTAINED IN THIS DRAWING IS THE SOLE PROPERTY OF CROWN INDUSTRIAL. ANY REPRODUCTION IN PART OR AS A WHOLE WITHOUT THE WRITTEN PERMISSION OF CROWN INDUSTRIAL IS PROHIBITED.	ID #:	STOCK PART #:
	0000558	
DESCRIPTION:		
1850 Lock Reinforcement Plate, Assy		
FINISH:	# PCS:	REV:
		B



CROWN INDUSTRIAL
 So. San Francisco, Ca
 (650) 952-5150
 www.crown-industrial.com