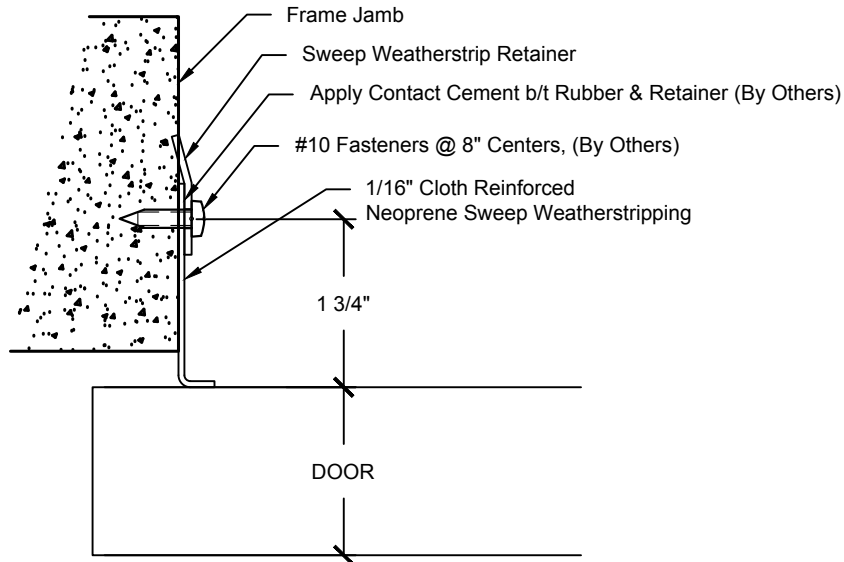
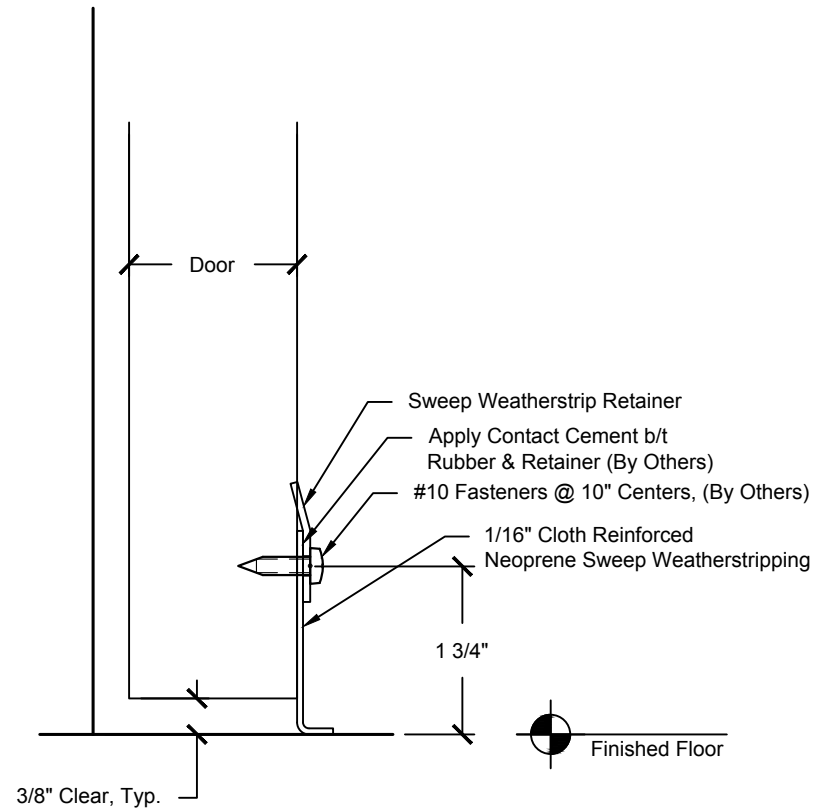


REVISIONS			
REV.	DESCRIPTION	DATE	APPROVED
A	#10 HOLE SPACING	12-19-16	MAP



1 Jamb Detail



2 Sill Detail

Standard Sweep Neoprene Size: 1/16" x 2-1/2"

- Part Number:
 #0216.00052 x 6'-0" Long
 #0216.00036 x 8'-0" Long
 #0216.00037 x 10'-0" Long
 #0216.00038 x 12'-0" Long

DWG #216
 DESCRIP: #216 Sweep Weatherstripping
 DRAWN:BCM 4-21-15 REV:A 12-19-16
 SCALE: None
 SHEET # 1
 FILE:c:\vault\workspace\designs\hardware\seals\0001973

THE INFORMATION CONTAINED IN THIS DRAWING IS THE SOLE PROPERTY OF CROWN INDUSTRIAL. ANY REPRODUCTION IN PART OR AS A WHOLE WITHOUT WRITTEN PERMISSION OF CROWN INDUSTRIAL IS PROHIBITED.



CROWN INDUSTRIAL
 So. San Francisco, Ca
 (650) 952-5150
 www.crown-industrial.com

4

3

2

1

REVISIONS				
ZONE	REV	DESCRIPTION	DATE	BY
	A	Hole Spacing from 10" OC	12-19-16	BCM

D

D

C

C

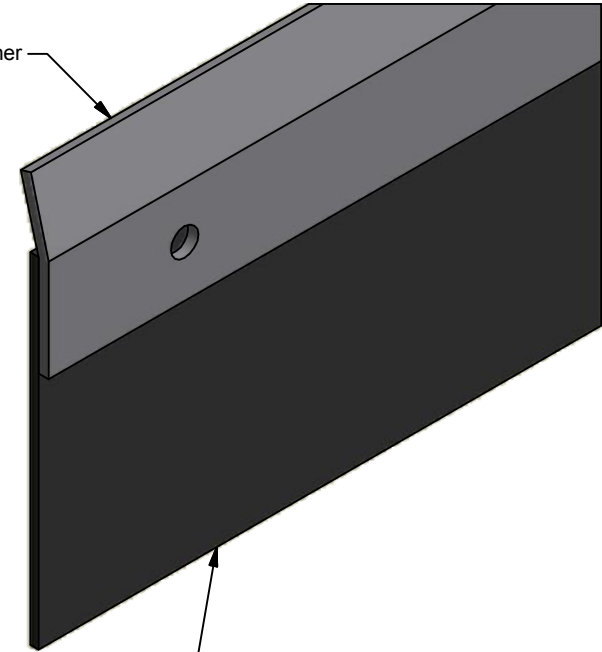
B

B

A

A

Sweep Weatherstripping Retainer



Sweep Weatherstrip Neoprene

Apply Contact Cement b/t Rubber and Retainer

Ø13/64 THRU @ 8" Centers For #10 Pan Head Fastener

1 3/4
Fastener Location

Finished Floor

ALL DIMENSIONS IN INCHES

THE INFORMATION CONTAINED IN THIS DRAWING IS THE SOLE PROPERTY OF CROWN INDUSTRIAL. ANY REPRODUCTION IN PART OR AS A WHOLE WITHOUT THE WRITTEN PERMISSION OF CROWN INDUSTRIAL IS PROHIBITED.

ID #: 0000171

STOCK PART #: 216S

MATERIAL:

DESCRIPTION:

Weatherstrip Assembly

FINISH:

PCS: 1
REV: A



CROWN INDUSTRIAL

So. San Francisco, Ca
(650) 952-5150

www.crown-industrial.com

DWG #: 216
DRAWN:BCM 9/22/2008
SHEET #1

File: 0000333.idw

4

3

2

1