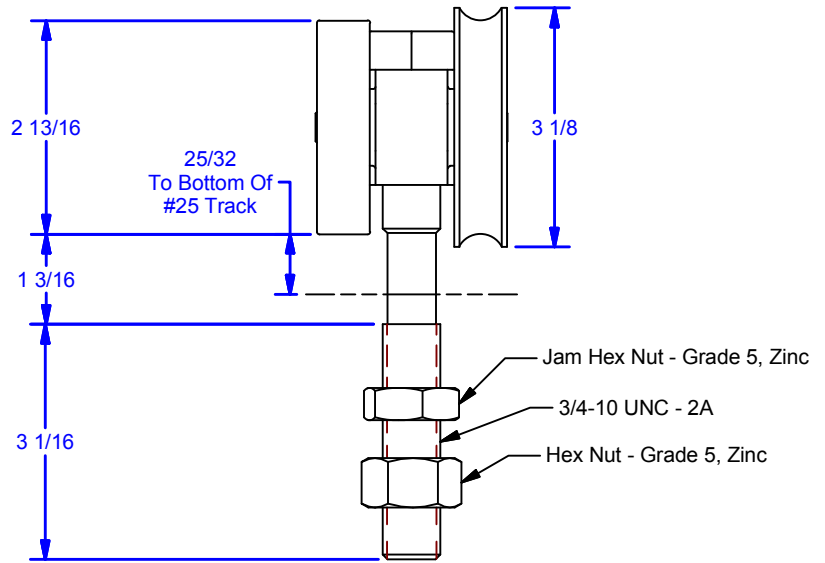
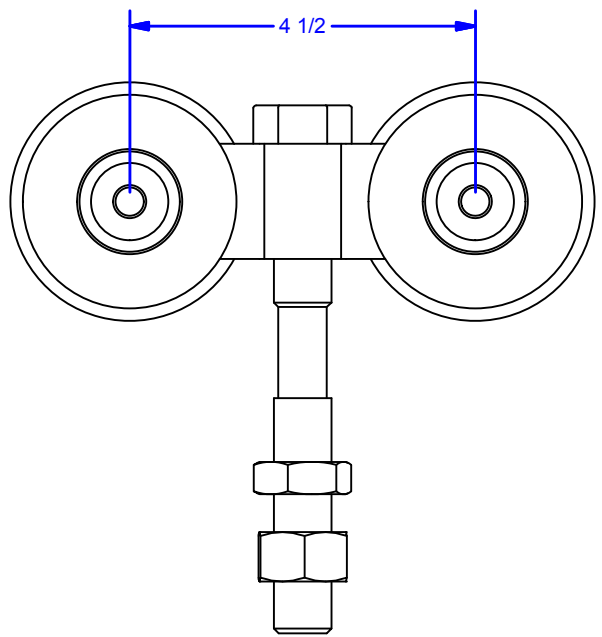
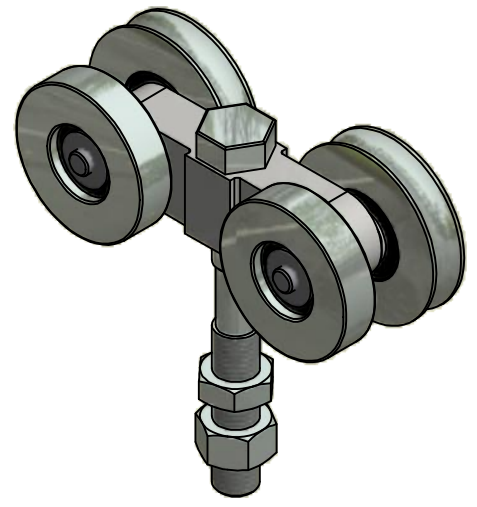
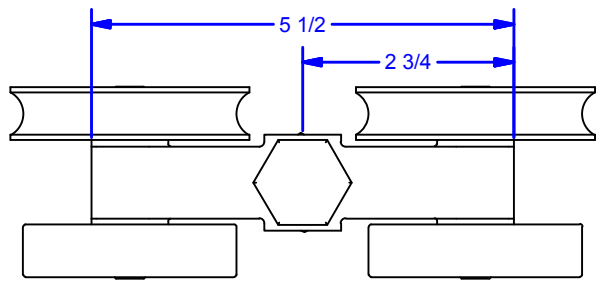


4 3 2 1



**ALL DIMENSIONS IN INCHES**

THE INFORMATION CONTAINED IN THIS DRAWING IS THE SOLE PROPERTY OF CROWN INDUSTRIAL. ANY REPRODUCTION IN PART OR AS A WHOLE WITHOUT THE WRITTEN PERMISSION OF CROWN INDUSTRIAL IS PROHIBITED.	ID #:	0001098-1	STOCK PART #:	25-1BLE
	MATERIAL:			
DESCRIPTION: Low Headroom Truck, (1500lb cap)				
FINISH: Clear Zinc			# PCS:	1
			REV:	



**CROWN INDUSTRIAL**  
So. San Francisco, Ca  
(650) 952-5150  
www.crown-industrial.com

DWG #: 25-1BLE  
DRAWN:BCM 8/11/2011  
SHEET #1  
File: 0001098.idw

4 3 2 1

4

3

2

1

D

D

C

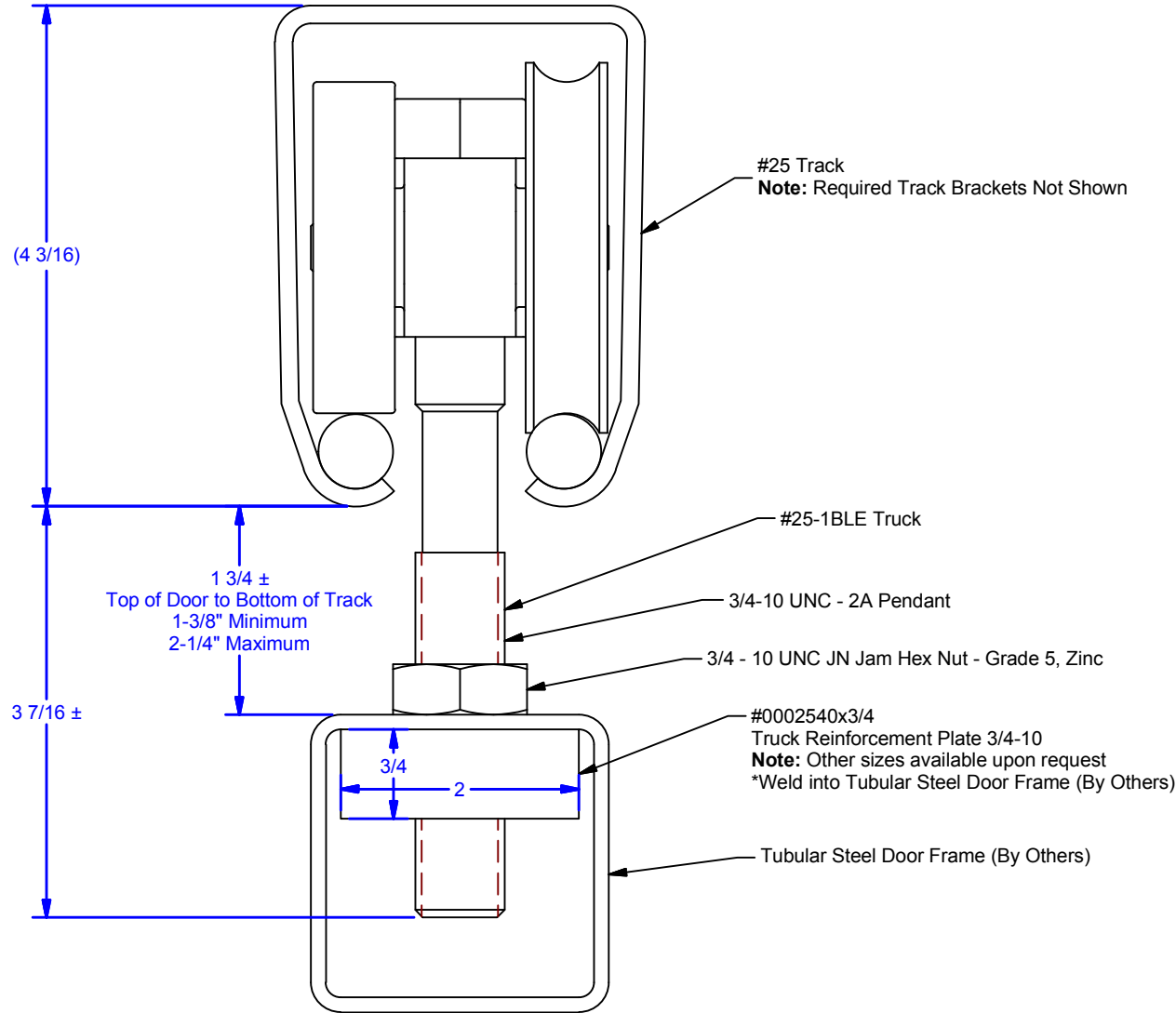
C

B

B

A

A



ALL DIMENSIONS IN INCHES

THE INFORMATION CONTAINED IN THIS DRAWING IS THE SOLE PROPERTY OF CROWN INDUSTRIAL. ANY REPRODUCTION IN PART OR AS A WHOLE WITHOUT THE WRITTEN PERMISSION OF CROWN INDUSTRIAL IS PROHIBITED.	ID #:	STOCK PART #:
	0002659	
DESCRIPTION:		
Tube Steel Door Attachment Detail: 25-1BLE		
FINISH:	# PCS:	REV:



**CROWN INDUSTRIAL**

So. San Francisco, Ca  
(650) 952-5150

www.crown-industrial.com

DWG #: 25-1BLE  
DRAWN:BCM 4/26/2018  
SHEET #2

File: 0001098.idw

4

3

2

1

A