

Curved Track and Switches

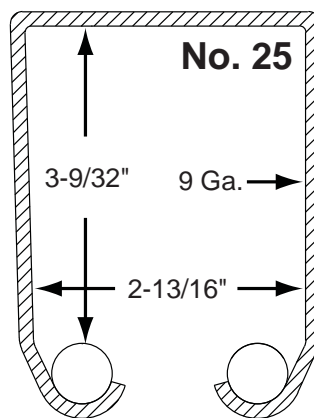


Special No. 25 Track Systems

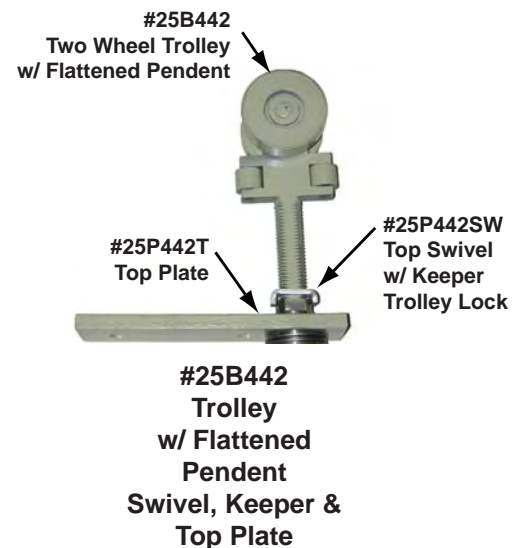
#25 is a high capacity versatile track system. It can accommodate straight sliding, curved and remote stacking applications.

Material is stocked in 6', 8', 10' straight lengths. Horizontal curved sections are available to suit any particular radius. Automatic and manual switches for remote stacking are available in either 30°, 45°, and 90° configurations.

The two wheel #25B442 trolley has 3" diameter machined steel wheels with sealed ball bearings and a pair of steel guide rollers built into the assembly.



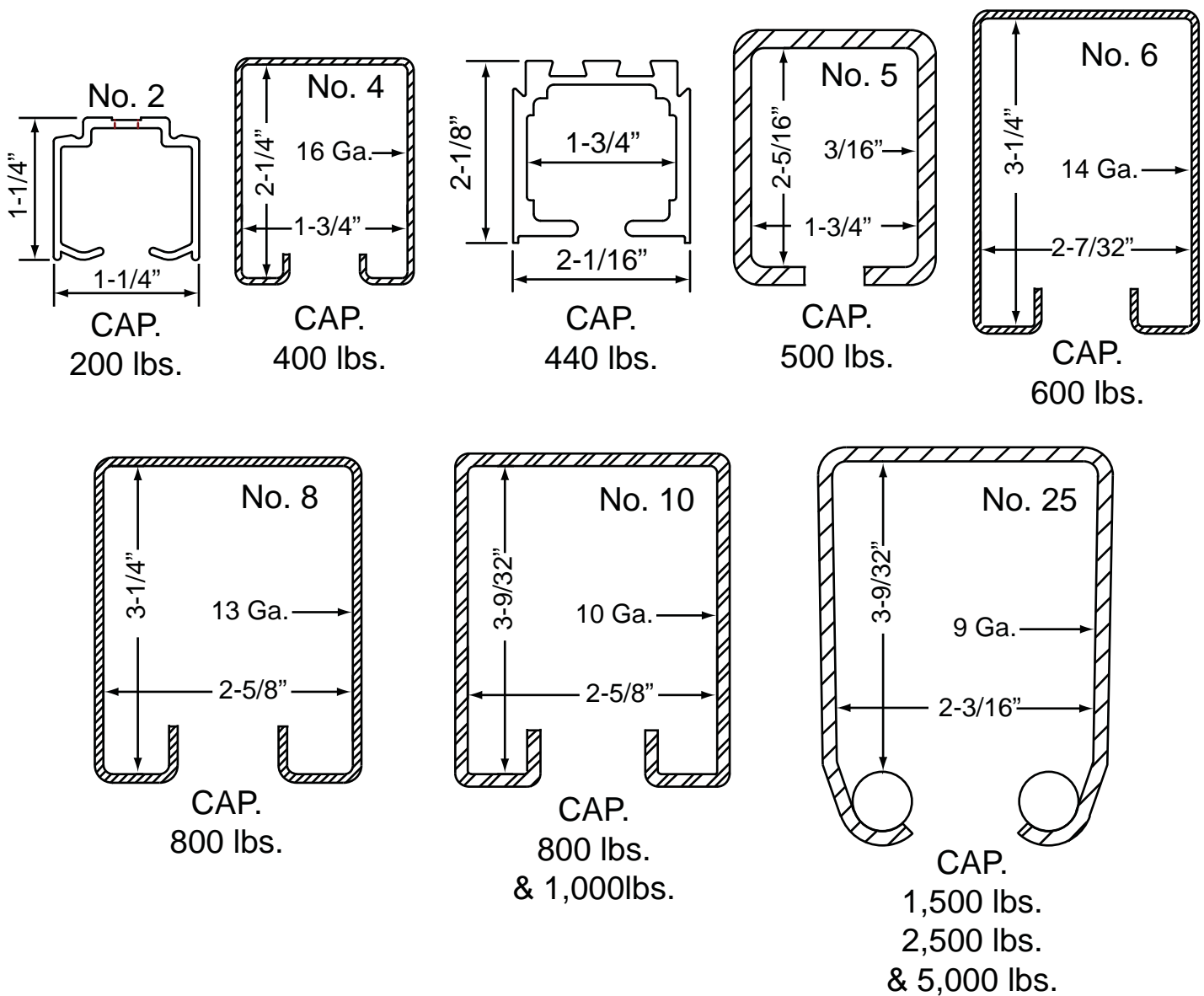
**CAP.
1250 lbs.**



Box Track Type

To Select Proper Size Track See Truck and Hanger Selection Charts Pages 4, 6 and 7.

*** NOTE: #5, and #25 track are used for special applications including curves and switches. See page 20 and 21 for more information and consult with our engineers.**

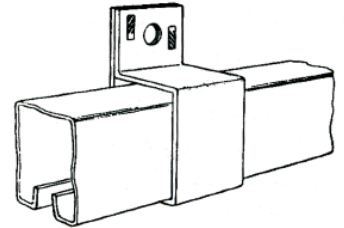


Box Type Track and Brackets Installation and Functions

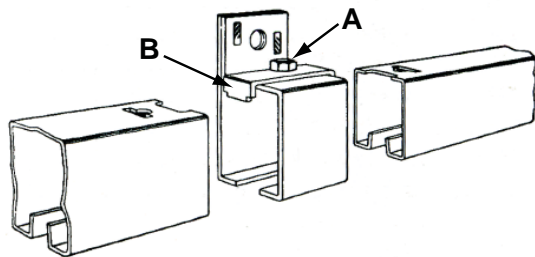
The unique design of Track and Brackets prevents the horizontal creep of tracks while binding them together tightly against the bottom of the bracket, achieving a smooth tight joint for the hanger runway.

CENTER BRACKET

Slide track through center brackets. Provides support of track and track lips at required support intervals.



LOCK JOINT BRACKET

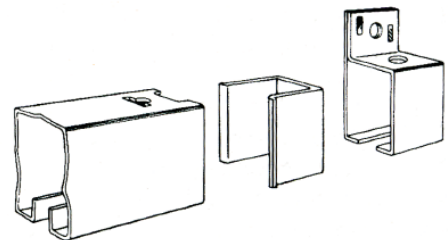


Loosen nut "A", raise clamp "B", slide tracks into bracket, drop bent ends of clamp "B" into holes in tops of track and tighten nut "A". Provides the unique feature between track sections.

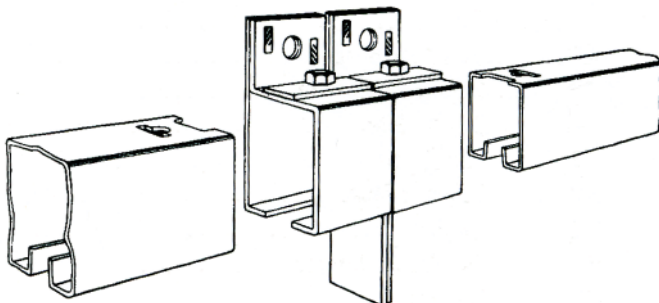
NOTE: #25 Track joints must be welded on all manual applications over 2500 lbs. and for all powered applications. See page 19 for welding kit information.

END BLIND

Push end blind into center sidewall/overhead track bracket. Slide the assembled bracket and end blind onto the end of track. The end blind acts as a stop to prevent creep on one-piece track applications as well as closes off the end of the track to birds, etc.



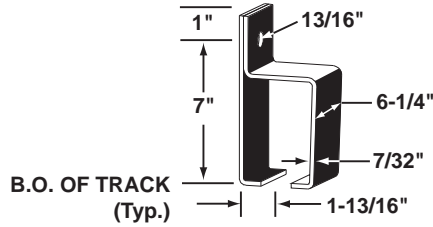
CENTER STOP BRACKETS



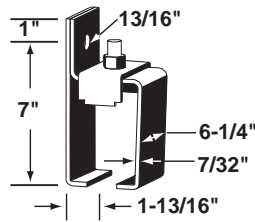
Slide each end of each track fully into center stop bracket. Provides track support and door stop at center of bi-parting door installations.

Brackets for No. 25 Track

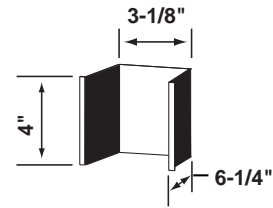
SIDEWALL



Center
25Px1 painted
25Gx1 galv.



Lock-Joint
25Px39 painted
25Gx39 galv.

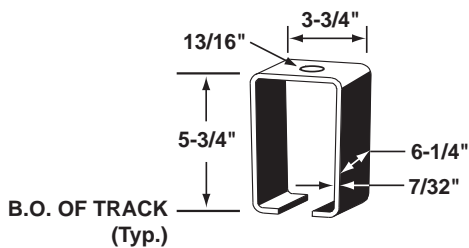


End Blind
25Gx2 galv.

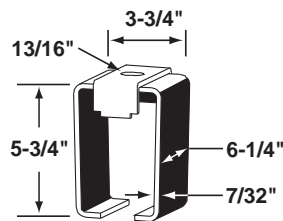
Shipping Weight By
Bracket Number & Description

Number	25Px1 25Gx1	25Px39 25Gx39
Description	Center	Lock Joint
Weight in lbs.	6-1/2	7-1/2

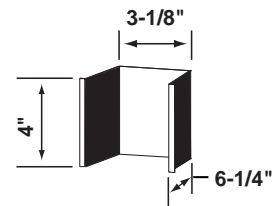
OVERHEAD



Center
25Px18 painted
25Gx18 galv.



Lock-Joint
25Px189 painted
25Gx189 galv.



End Blind
25Gx2 galv.

Shipping Weight By
Bracket Number & Description

Number	25Px18 25Gx18	25Px189 25Gx189
Description	Center	Lock Joint
Weight in lbs.	6	7

**NOTE: MAX. BRACKET SPACING 60" ON CENTERS FOR 2500 Lbs. CAPACITY.
MAX. BRACKET SPACING 24" ON CENTERS FOR 5000 Lbs. CAPACITY.**

Tracks extend into center stop and end brackets 4-1/2".

*Use end blind in combination with any center bracket to produce an end bracket.

†25 Track joints must be welded on all manual applications over 2500 lbs. and for all powered applications.

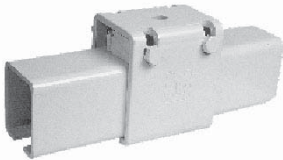
See page 19 for welding kit information.

No. 5 Track Brackets No. 5 & 25 Welding Kits

NO. 5 TRACK BRACKETS

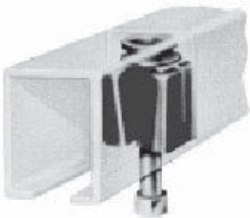


The **5PX18** bracket is used only for suspending #5 track by means of a single bolt. The bracket should be used for supporting the track when the joints are welded and should be used on curves except when the track is supported by angles or flat bar. Distance from top of bracket to bottom of track is 3-3/4". Finish: Painted. Weight: 2 lbs.



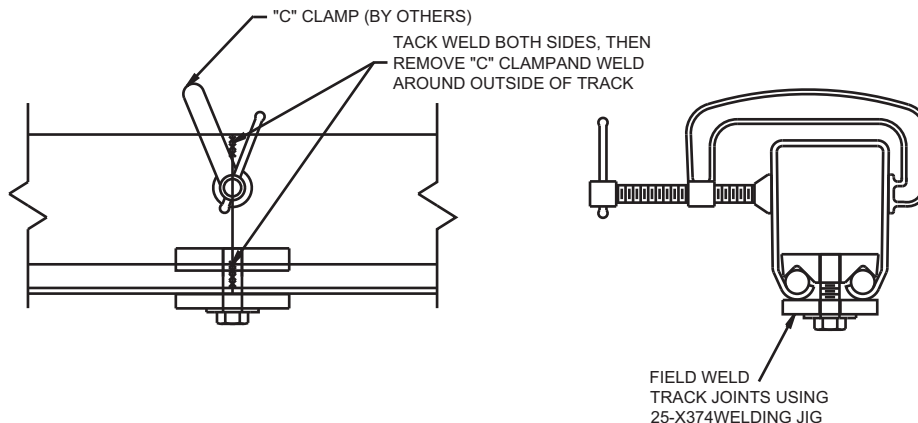
The **5PX18** bracket is used only for suspending #5 track by means of a single bolt. The bracket should be used for supporting the track when the joints are welded and should be used on curves except when the track is supported by angles or flat bar. Distance from top of bracket to bottom of track is 3-3/4". Finish: Painted. Weight: 2 lbs.

NO. 5-X155 WELDING JIG



The welding method is recommended since it makes a continuous section of track eliminating the need for joint brackets. The welding jig aligns the inside of the track, holding the two sections in position for welding thus allowing the weld bead to be flush with the track to ensure smooth operation. Finish: Brass. Weight: 1-1/2 lbs.

NO. 25-X374 WELDING JIG



No. 25-X374 Weld Kit

The welding jig is designed to hold #25 track ends in alignment where a field welded joint is required, ensuring the weld bead to be flush with the track for smooth operation. Reusable for up to 30-50 welding operations, depending on temperature usage.

Construction: Brass or bronze fixture clamp parts & steel bolt. Packed: Boxed with instruction sheet. Weight: 2-1/2 lbs.

Note: #25 track joints must be welded on all manual applications over 2500 lbs and for all powered applications.

WARRANTY

Hardware products are warranted to be of good quality, and free from defects in material and workmanship under normal intended use for a period of one (1) year from the date of purchase. If any hardware, or part thereof, is determined by the factory not to be as warranted, the factory will, at its option and without charge, replace the defective part or parts.

Under no circumstances shall we be liable for indirect or consequential damages of any kind. These warranties are in lieu of all other warranties expressed or implied including, but not limited to, warranties of merchantability or fitness for a particular purpose. The warranties cover Crown Industrial material. We shall not be liable, nor do we assume responsibility for damage or operational failures caused by supporting and/or surrounding structure and/or equipment, overloading of the product beyond the manufacturer's rated capacity, improper use or application beyond the manufacturer's intended or recommended use, or other external causes such as abuse or acts of god and other causes beyond our control. Maintenance and adjustments are the responsibility of the owner. This guarantee does not cover such maintenance and adjustments, nor any services which may be required as a result of the purchaser's failure to perform normal maintenance and adjustments to the purchased product.

Replacement of defective material shall be furnished without charge, delivered, installation not included. If the factory decides to service a warranted product at the purchaser's place of business and determines that no defective material or improper workmanship exists, then the purchaser shall reimburse the factory for all expenses, including time and travel, incurred in providing the service.

This guarantee is not applicable to other non-hardware products.

RETURN GOODS POLICY

Requests in writing for RGA must be made to the Crown Industrial Customer Support Department within 30 days of the material shipment from Crown Industrial. Crown will determine the eligibility to return any material and will notify the requestor within 5 day upon receipt of written request. Crown will also instruct the requestor to return the material to Crown or dispose of such before the issuance of the appropriate credit. Special items (i.e. stainless steel or custom painted) and items not manufactured by Crown (purchased) will not be eligible for return. Any material returned to Crown or disposed of without the proper authorization by Crown will be refused and no credit will be issued. Return goods must be shipped freight prepaid at the requestor's expense within 15 days of receipt of written authorization. The requestor must determine the carrier. All material returned must be received in original packaging. Credit will be given on returned material only after receipt and inspection by Crown. Provide the RGA number and a copy of the original packing slip with all returned material. Credit for all authorized returns are subject to a 25% restocking charge on the net acceptable material value.

Distributor



**C R O W N
INDUSTRIAL**

213 Michelle Court
So. San Francisco, CA 94080-6202

Phone: (650) 952-5150

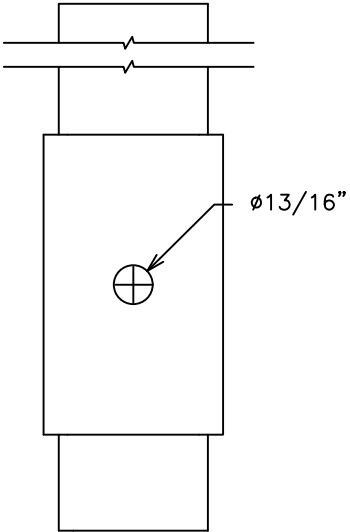
Fax: (650) 873-1495

Website: www.crown-industrial.com

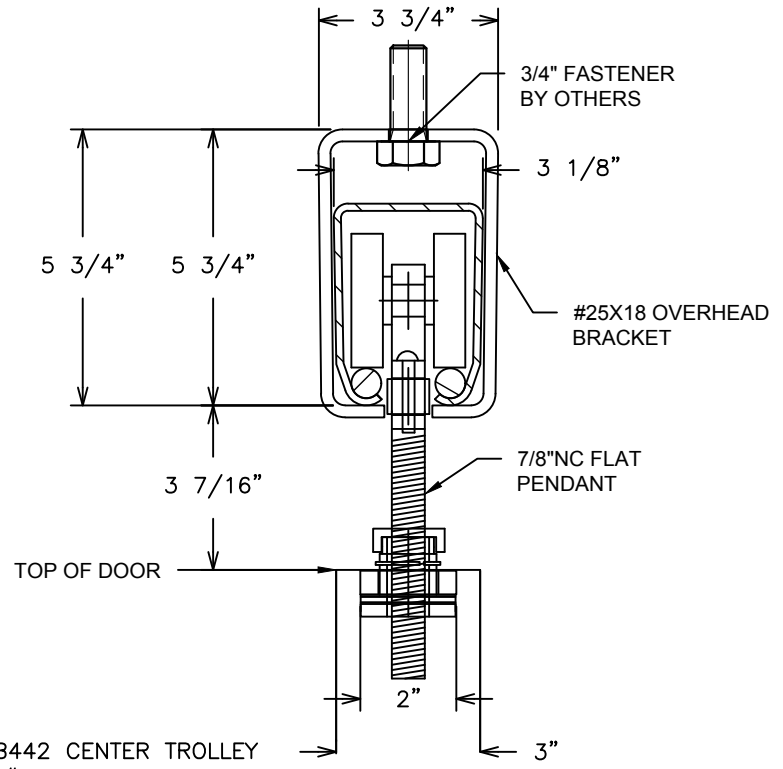
HDW-10

© 2012 Crown Industrial. Printed in U.S.A.

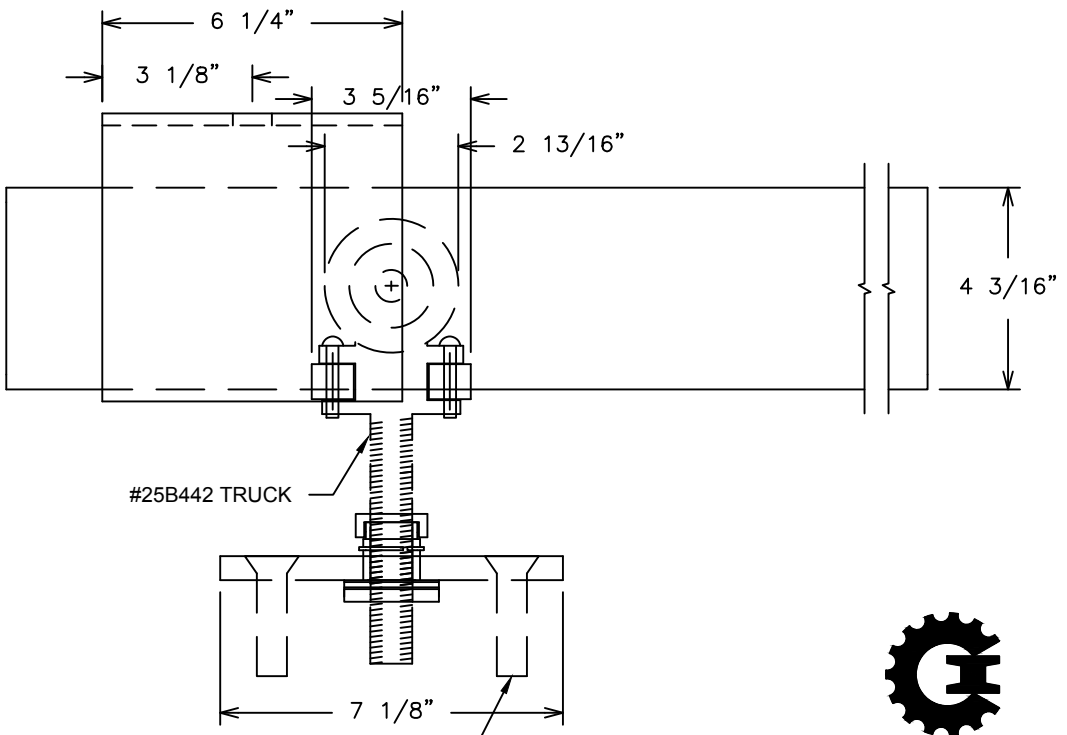
REVISIONS			
REV.	DESCRIPTION	DATE	APPROVED



PLAN VIEW



SECTION VIEW



DRILL & TAP TOP OF DOOR

DWG #25B442 CENTER TROLLEY
 DESCRIPT: #25B442Cx25X18
 OVERHEAD MOUNT
 DRAWN:WRM 4/8/09 REV:
 SCALE: 3" = 1'-0"
 SHEET #10.5
 FILE:j:\crown work\xm\dwg\25

25B442 TRUCK
 1,250 LB. CAPACITY/PR.

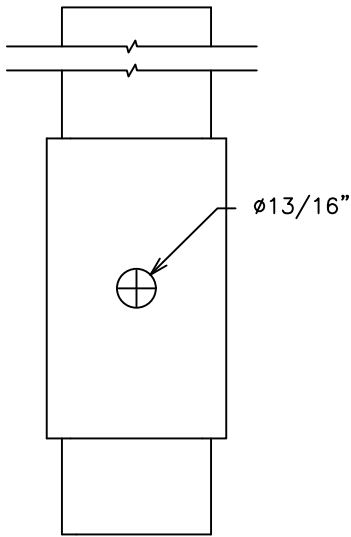
THE INFORMATION CONTAINED IN THIS DRAWING IS THE SOLE PROPERTY OF CROWN INDUSTRIAL. ANY REPRODUCTION IN PART OR AS A WHOLE WITHOUT WRITTEN PERMISSION OF CROWN INDUSTRIAL IS PROHIBITED.



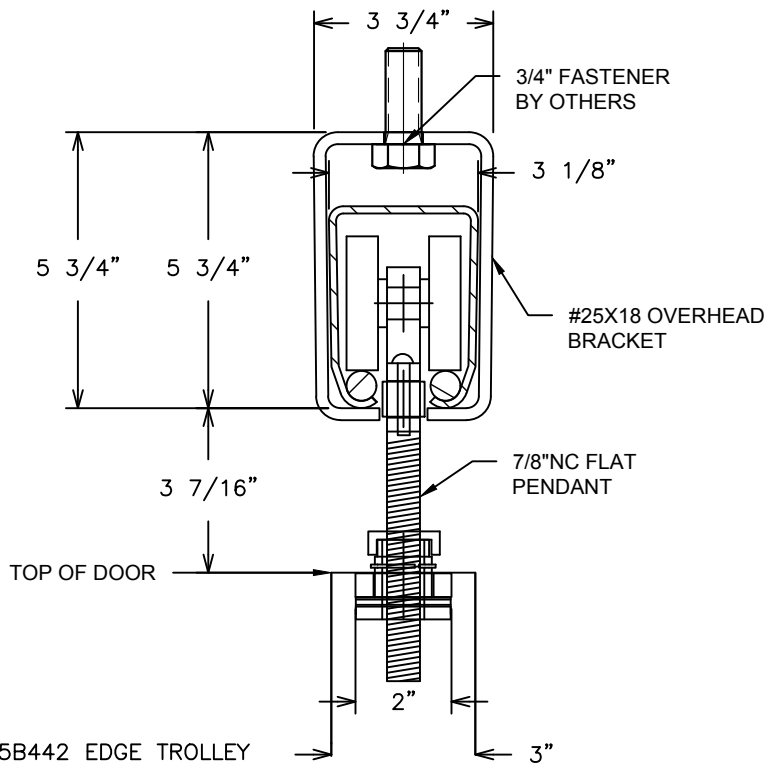
CROWN
 INDUSTRIAL
 SUPPLY

SO. SAN FRANCISCO, CA
 (650)952-5150

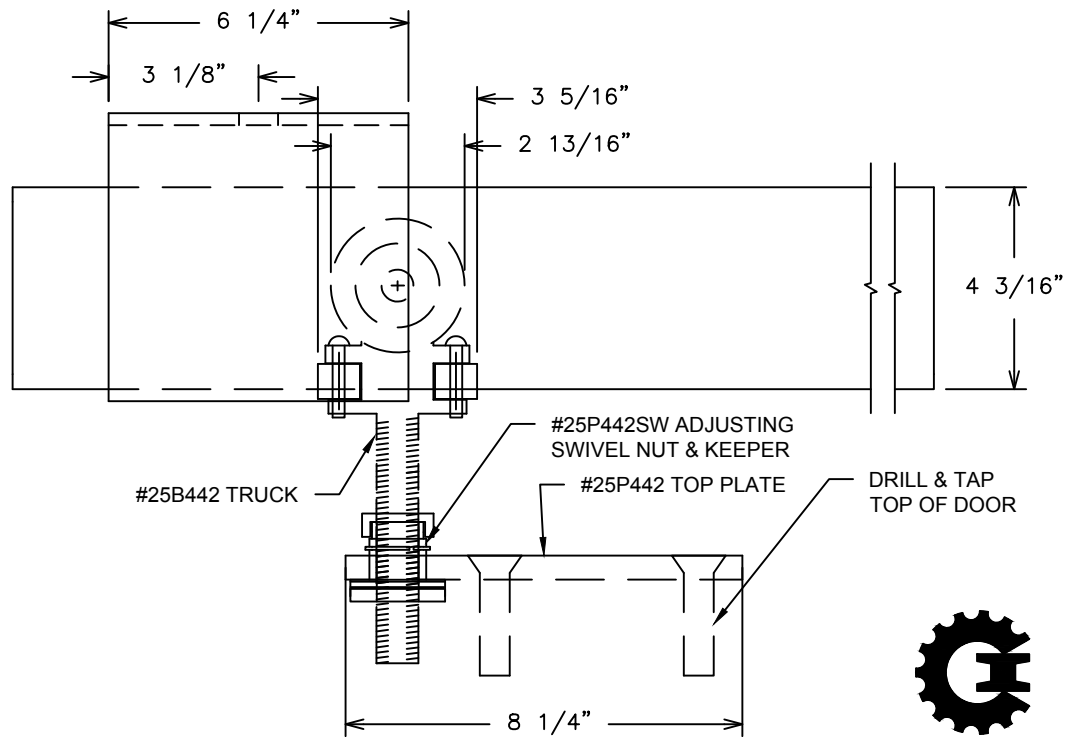
REVISIONS			
REV.	DESCRIPTION	DATE	APPROVED



PLAN VIEW



SECTION VIEW



ELEVATION VIEW

DWG #25B442 EDGE TROLLEY
 DESCRIPT: #25B442x25X18
 OVERHEAD MOUNT
 DRAWN:WRM 4/8/09 REV:
 SCALE: 3" = 1'-0"
 SHEET #10
 FILE:j:\crown work\xm\dwg\25

25B442 TRUCK
 1,250 LB. CAPACITY/PR.

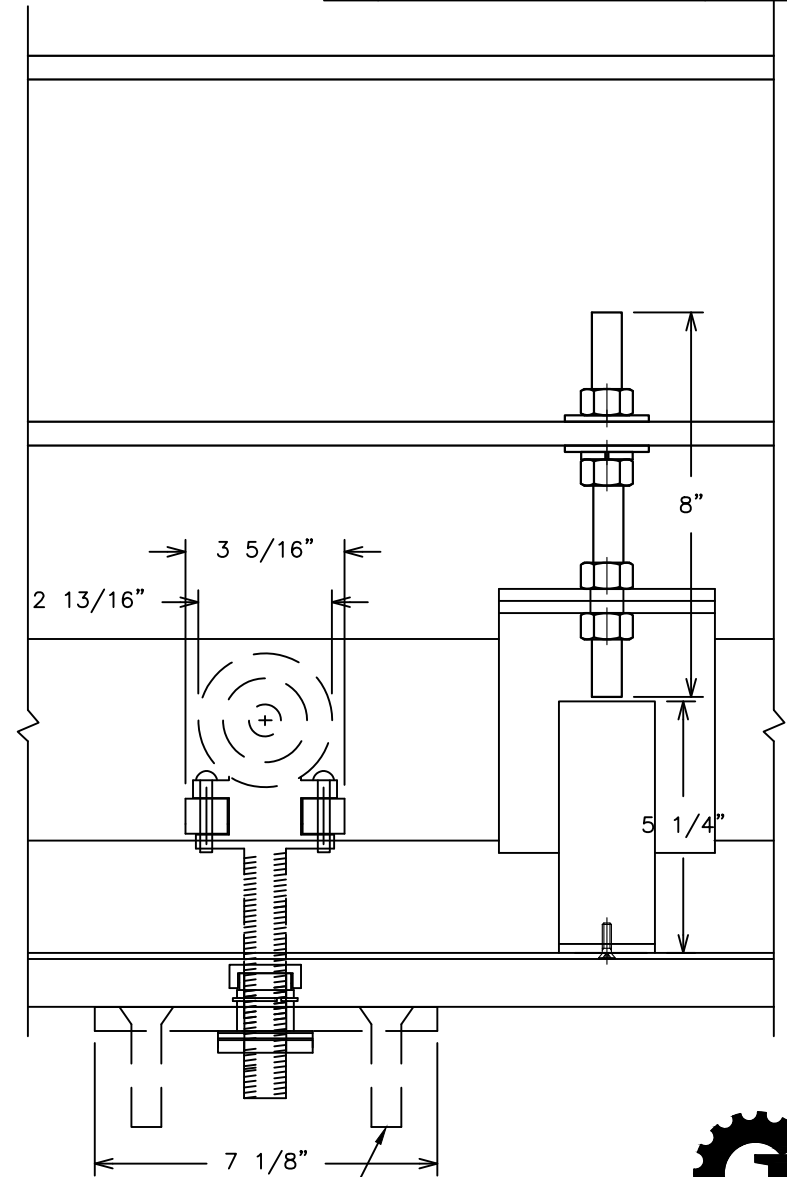
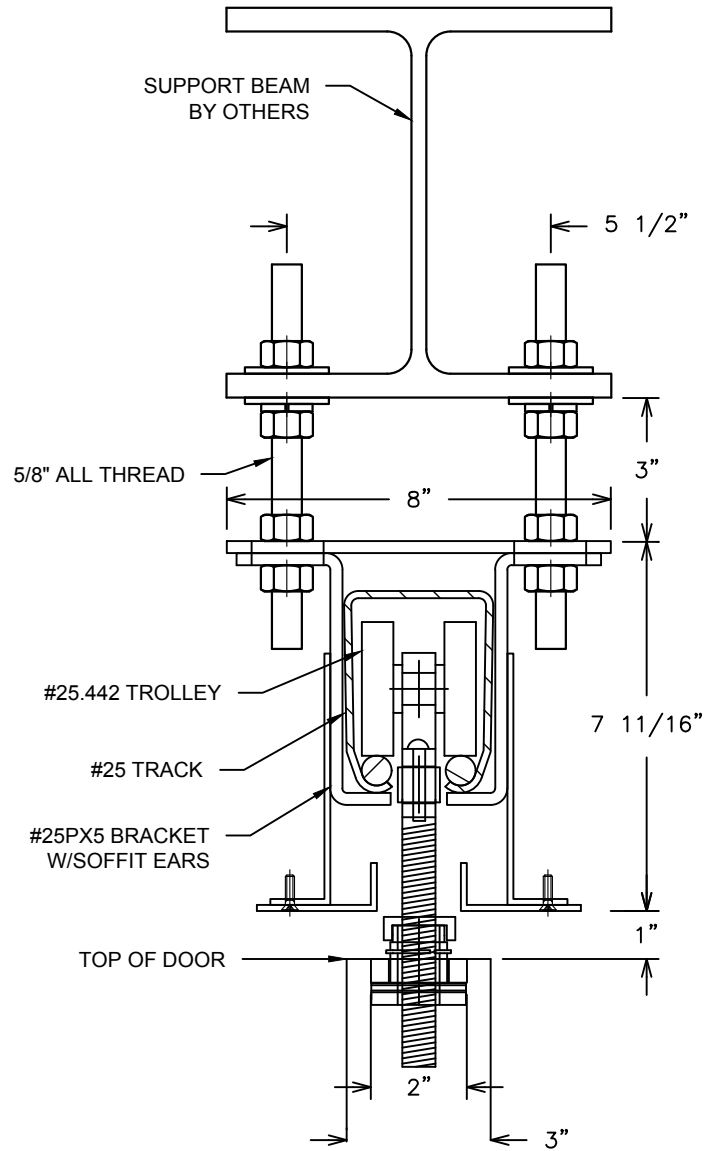
THE INFORMATION CONTAINED IN THIS DRAWING IS THE SOLE PROPERTY OF CROWN INDUSTRIAL. ANY REPRODUCTION IN PART OR AS A WHOLE WITHOUT WRITTEN PERMISSION OF CROWN INDUSTRIAL IS PROHIBITED.



CROWN
 INDUSTRIAL
 SUPPLY

SO. SAN FRANCISCO, CA
 (650)952-5150

REVISIONS			
REV.	DESCRIPTION	DATE	APPROVED



DRILL & TAP TOP OF DOOR

1,250 LB. CAPACITY PER/PR.

THE INFORMATION CONTAINED IN THIS DRAWING IS THE SOLE PROPERTY OF CROWN INDUSTRIAL. ANY REPRODUCTION IN PART OR AS A WHOLE WITHOUT WRITTEN PERMISSION OF CROWN INDUSTRIAL IS PROHIBITED.

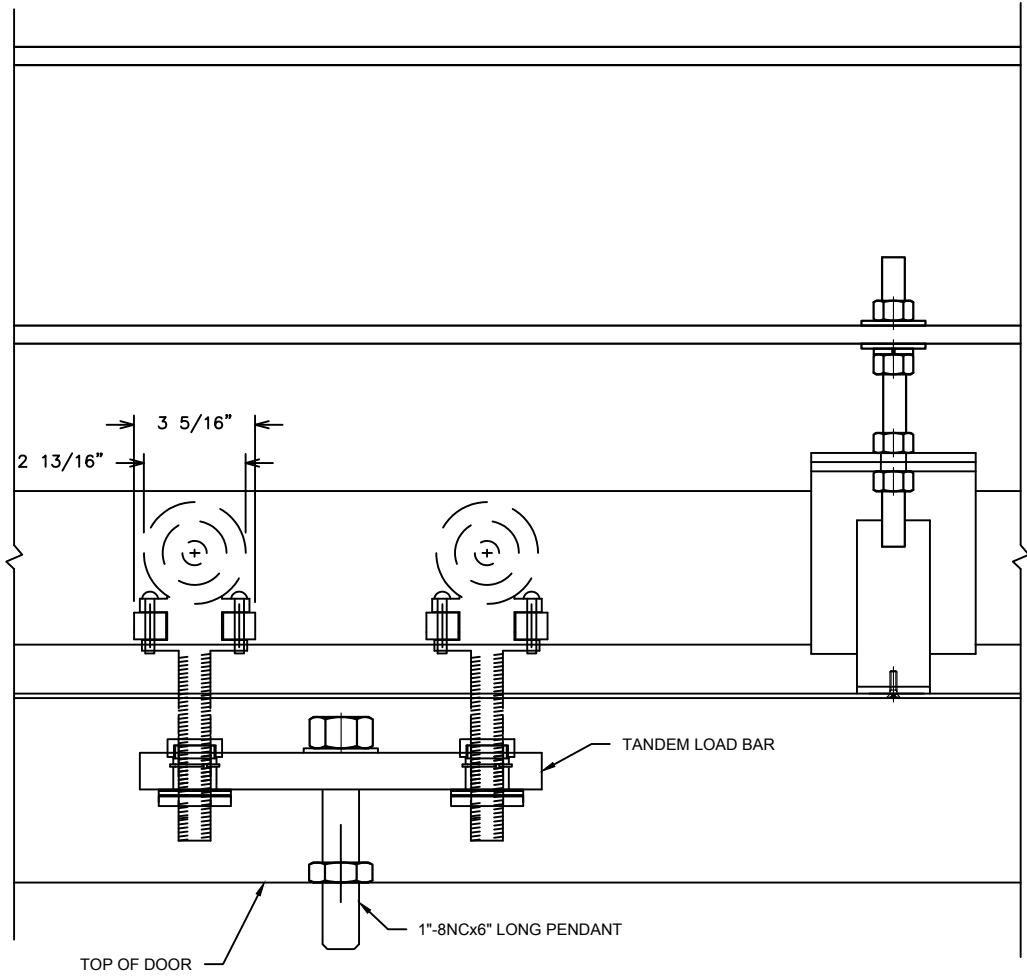
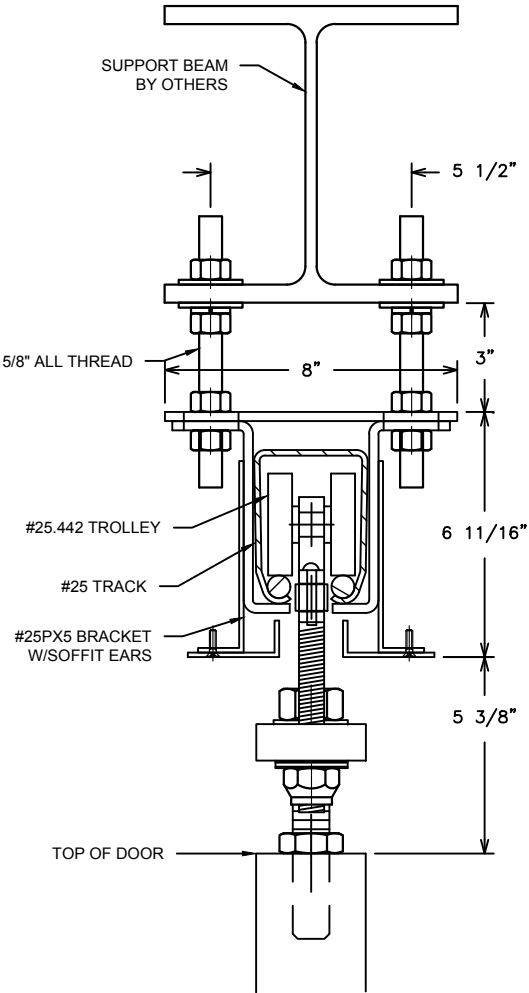


CROWN
INDUSTRIAL
SUPPLY

SO. SAN FRANCISCO, CA
(650)952-5150

DWG #25.442 CENTER TROLLEY
DESCRIP: #25 HEAD DETAIL
OVERHEAD MOUNT
DRAWN:WRM 4/8/09 REV:
SCALE: 3" = 1'-0"
SHEET #10.5
FILE:j:\crown work\xm\dwg\25

REVISIONS			
REV.	DESCRIPTION	DATE	APPROVED



DWG #25x5-442 TANDEUM TROLLEY
 DESCRIP: #25B442x25X5
 OVERHEAD MOUNT
 DRAWN:WRM 4/8/09 REV:
 SCALE: 2 73/256" = 1'-0"
 SHEET #12
 FILE:j:\crown work\xm\dwg\25

2,500 LB. CAPACITY PER/PR.

THE INFORMATION CONTAINED IN THIS DRAWING IS THE SOLE PROPERTY OF
 CROWN INDUSTRIAL. ANY REPRODUCTION IN PART OR AS A WHOLE WITHOUT
 WRITTEN PERMISSION OF CROWN INDUSTRIAL IS PROHIBITED.



C R O W N
 I N D U S T R I A L
 S U P P L Y
 SO. SAN FRANCISCO, CA
 (650)952-5150