

4

3

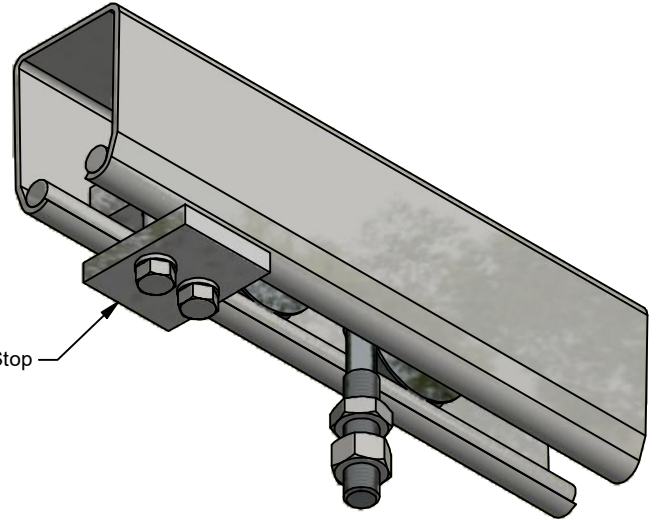
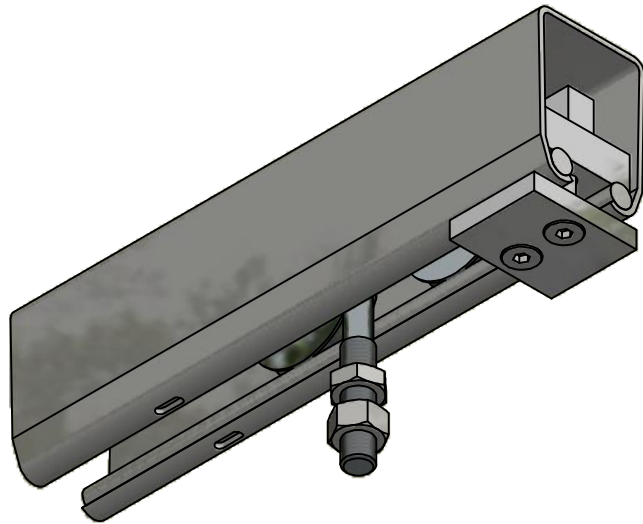


2

1

D

D



#25.00CSTR Concealed Track Stop

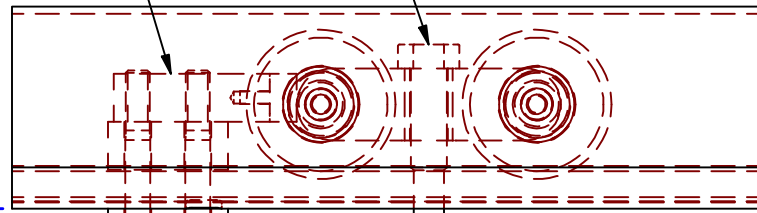
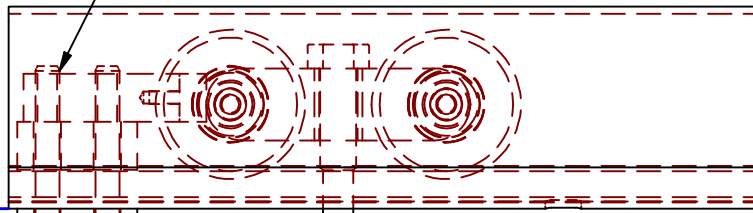
#25 BLE Truck or Hanger Assembly

For Low Head Room Applications use #25.00CSTR-BLE Concealed Track Stop

#25.00CSTR Concealed Track Stop

C

C



1/2 +1/4
For Bracket Thickness

6 11/16

1 +1/4
For Bracket Thickness

6 11/16

25.00CSTR Std. Concealed Stop

25.00CSTR-BLE Low Head Concealed Stop

ALL DIMENSIONS IN INCHES

THE INFORMATION CONTAINED IN THIS DRAWING IS THE SOLE PROPERTY OF CROWN INDUSTRIAL. ANY REPRODUCTION IN PART OR AS A WHOLE WITHOUT THE WRITTEN PERMISSION OF CROWN INDUSTRIAL IS PROHIBITED.

ID #: 0001903-1

STOCK PART #: 25.00CSTR

MATERIAL:

DESCRIPTION:

Concealed Track Stop Layout for 25 BLE

FINISH:

PCS: 1

REV:



CROWN INDUSTRIAL

So. San Francisco, Ca
(650) 952-5150

www.crown-industrial.com

DWG #: 0001828
DRAWN:BCM 2/20/2015
SHEET #8
File: 0001828.idw

4

3



2

1

A

A

4

3

2

1

D

D

C

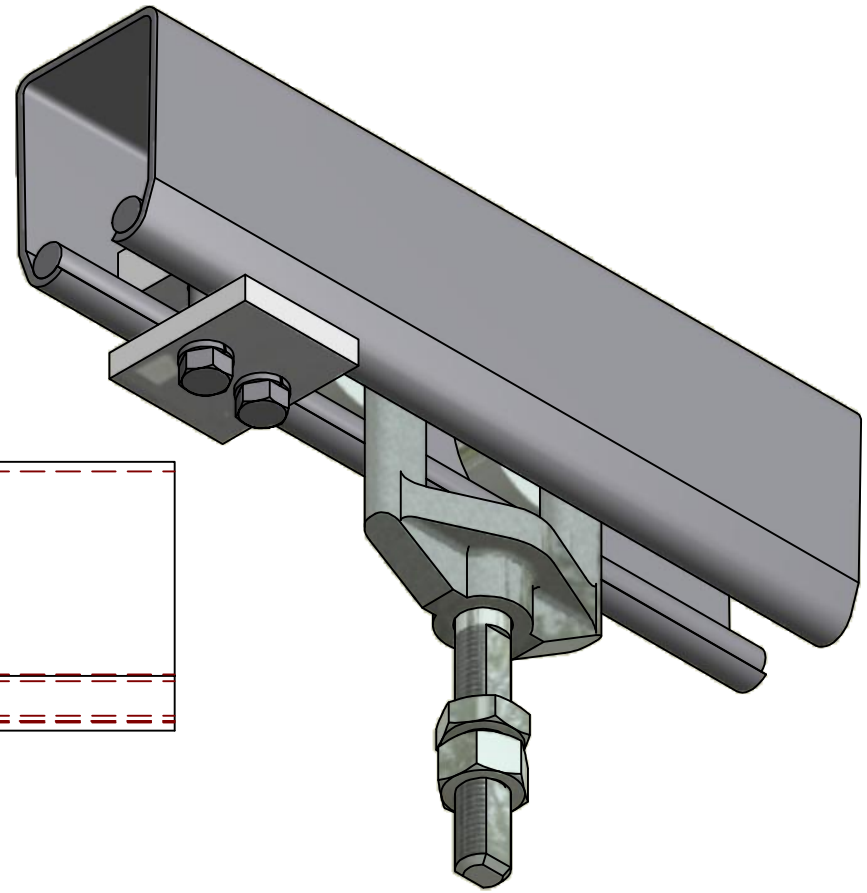
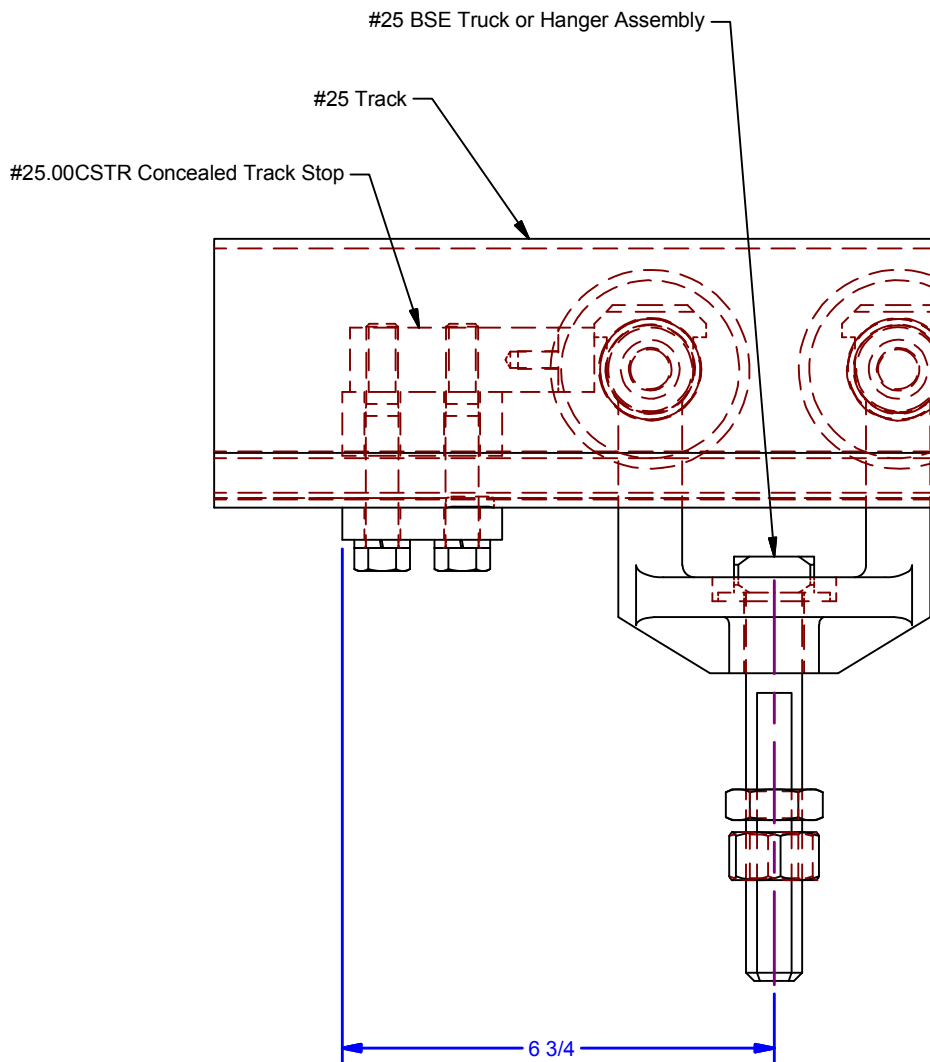
C

B

B

A

A



DWG #: 0001828
 DRAWN:BCM 2/20/2015
 SHEET #7
 File: 0001828.idw

ALL DIMENSIONS IN INCHES

THE INFORMATION CONTAINED IN THIS DRAWING IS THE SOLE PROPERTY OF CROWN INDUSTRIAL. ANY REPRODUCTION IN PART OR AS A WHOLE WITHOUT THE WRITTEN PERMISSION OF CROWN INDUSTRIAL IS PROHIBITED.	PART #:	STOCK #:
	0001904	25.00CSTR
DESCRIPTION:		
Concealed Track Stop Layout for 25 BSE		
FINISH:	# PCS:	REV:
	1	



CROWN INDUSTRIAL
 So. San Francisco, Ca
 (650) 952-5150
 www.crown-industrial.com

4

3

2

1