

4

3

2

1

D

D

C

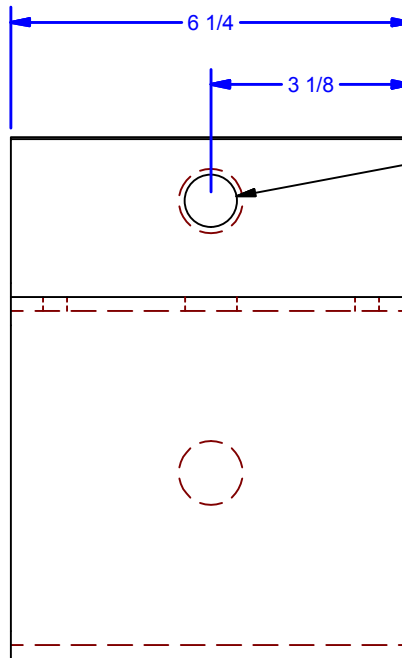
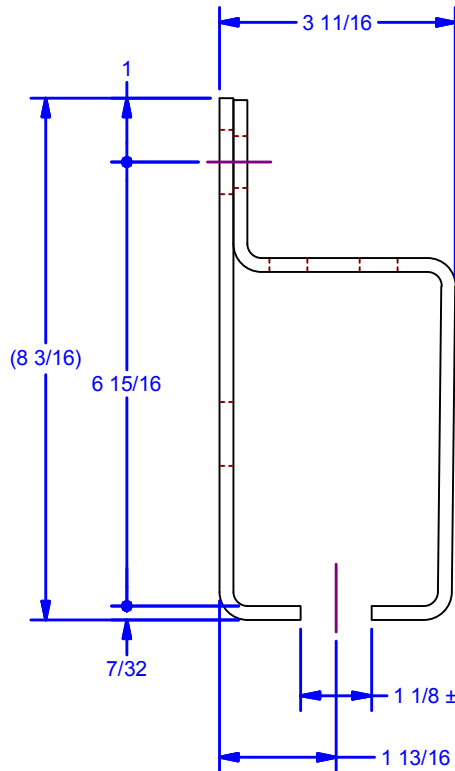
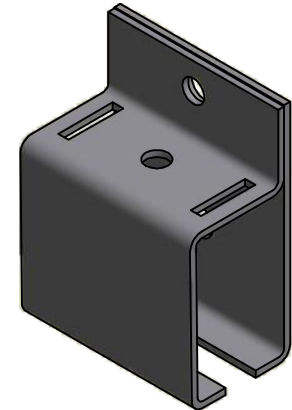
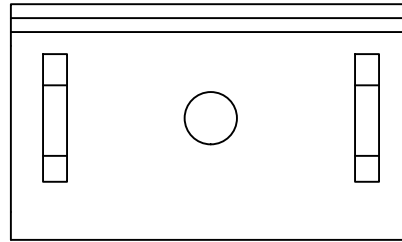
C

B

B

A

A



Ø13/16 THRU  
For 3/4 Hex Head Bolt

**Note:**  
Spaced on a maximum of 60" centers for 2,500 lb weight capacity.  
Spaced on a maximum of 24" centers for 5,000 lb weight capacity

**Avail. Finishes:**  
Powder Coat Black  
Powder Coat Pebble Tan  
Hot Dipped Galvanized

DWG #: #25  
DRAWN:BCM 4/17/2007  
SHEET #3  
File: 0000455.idw

**ALL DIMENSIONS IN INCHES**

THE INFORMATION CONTAINED IN THIS DRAWING IS THE SOLE PROPERTY OF CROWN INDUSTRIAL. ANY REPRODUCTION IN PART OR AS A WHOLE WITHOUT THE WRITTEN PERMISSION OF CROWN INDUSTRIAL IS PROHIBITED.	ID #:	STOCK PART #:
	0000456	25x1
DESCRIPTION:		MATERIAL:
Sidewall Center Bracket		
FINISH:	# PCS:	REV:



**CROWN INDUSTRIAL**  
So. San Francisco, Ca  
(650) 952-5150  
www.crown-industrial.com