

4

3

2

1

D

C

B

A

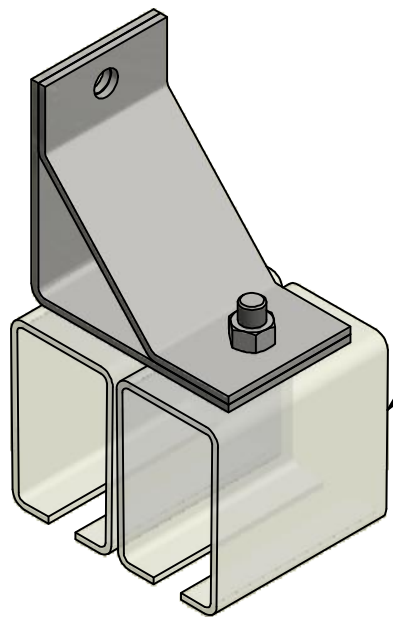
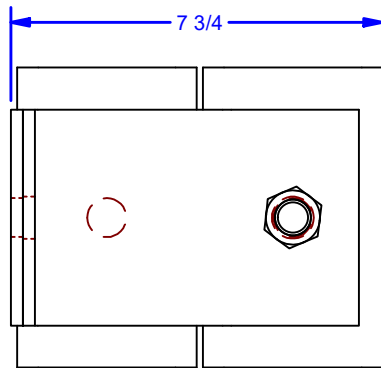
D

C

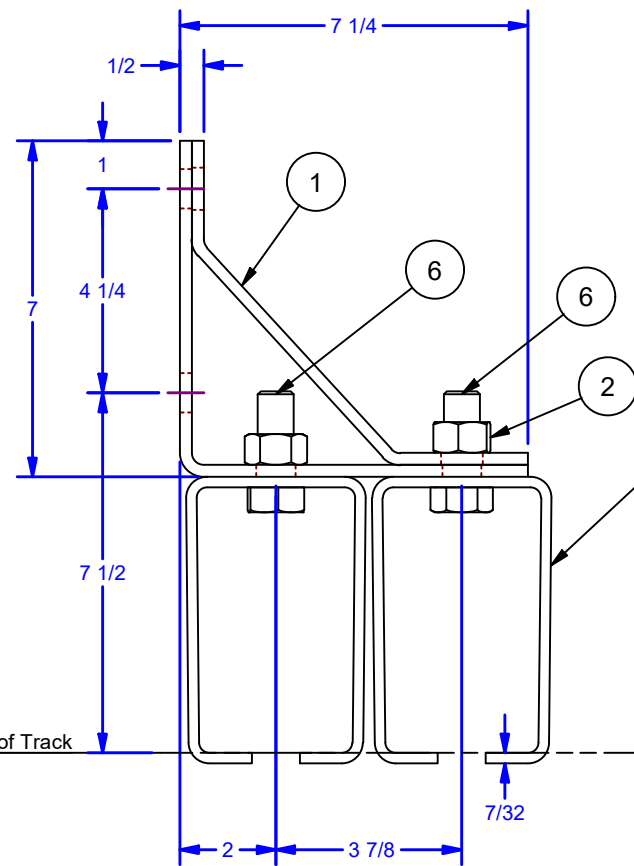
B

A

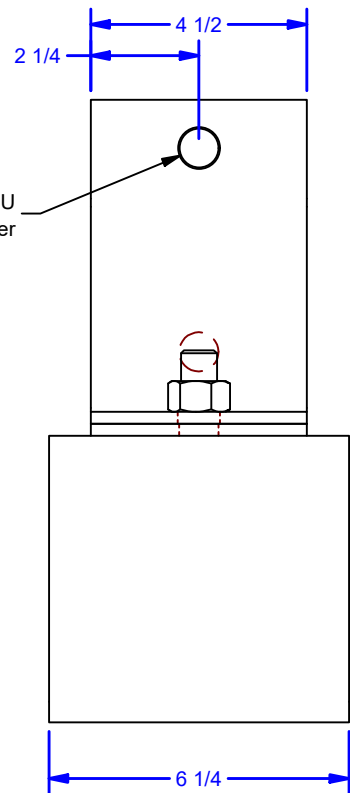
Parts List			
ITEM	QTY	PART #	DESCRIPTION
1	1	0002138	#25 Double Bracket Assembly
2	2	HN 3/4 - 10 Zinc-5	Hex Nut - Grade 5, Zinc
6	2	HHMB 3/4-10 UNC - 2-5 Zinc	Hex Head Machine Bolt -Grade 5, Zinc



Indicate Overhead/Joint Bracket Configuration



Indicate Overhead/Joint Bracket Configuration
Overhead Bracket Shown as Reference & Not Included in Assembly



Bottom of Track

Bracket Spacing:
60" Centers up to 2,500 lbs capacity
24" Centers up to 5,000 lb capacity.

ALL DIMENSIONS IN INCHES

THE INFORMATION CONTAINED IN THIS DRAWING IS THE SOLE PROPERTY OF CROWN INDUSTRIAL. ANY REPRODUCTION IN PART OR AS A WHOLE WITHOUT THE WRITTEN PERMISSION OF CROWN INDUSTRIAL IS PROHIBITED.	ID #:	0002141	STOCK PART #:	25x22
	MATERIAL:			
DESCRIPTION: Double Wall Mount Angle Assembly				
FINISH: Powder Coat or Galvanized			# PCS:	REV: A



CROWN INDUSTRIAL
So. San Francisco, Ca
(650) 952-5150
www.crown-industrial.com

DWG #: #25
DRAWN:BCM 11/12/2015
SHEET #6
File: 0000455.idw

4

3

2

1

