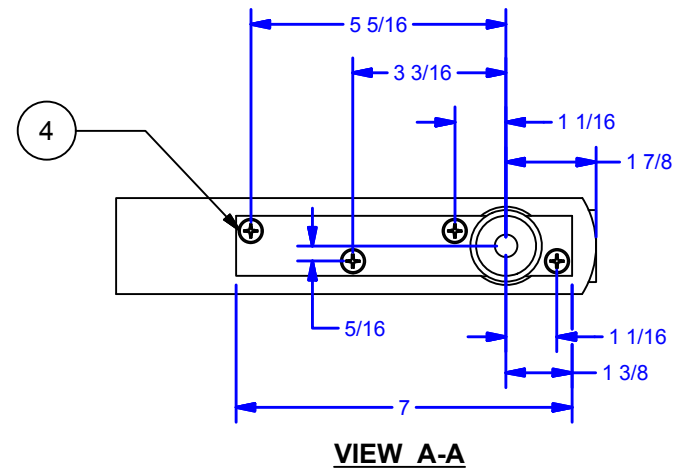
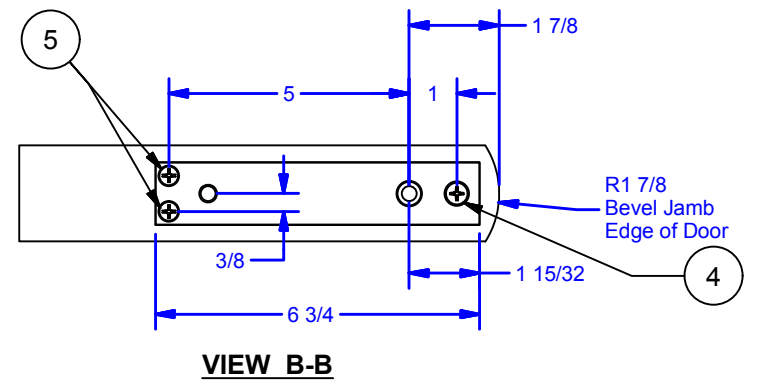
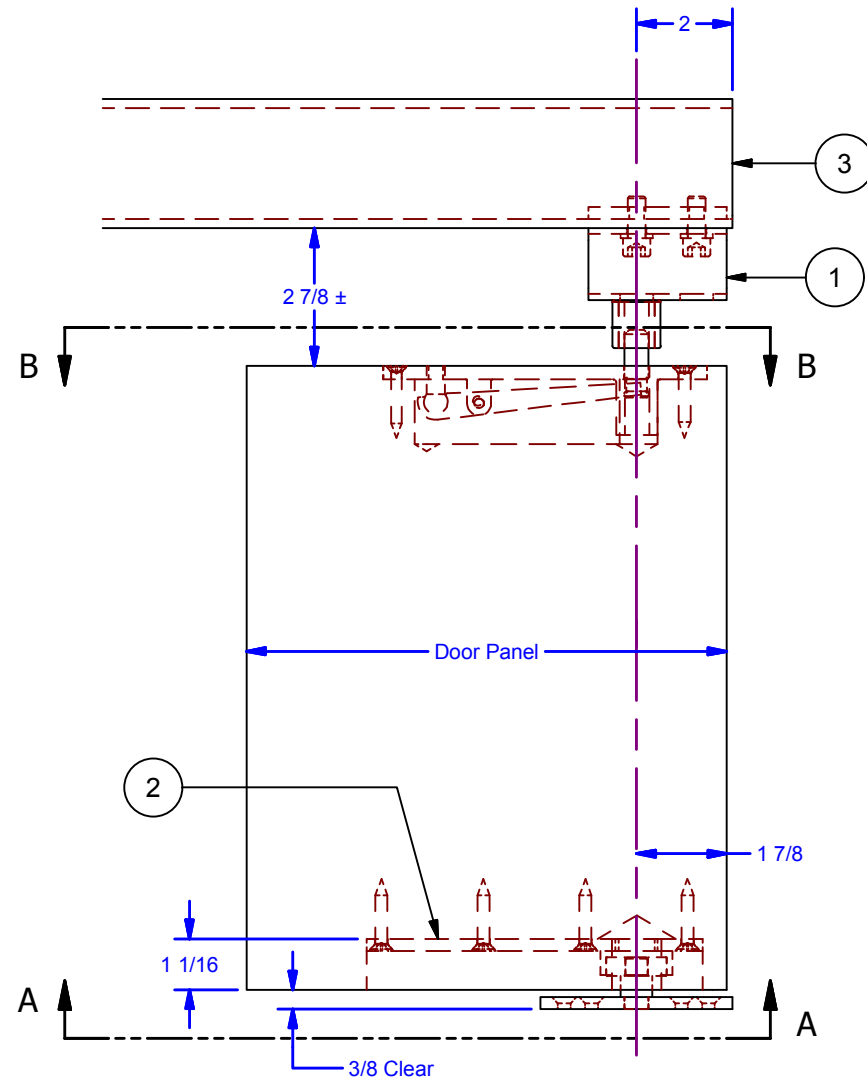
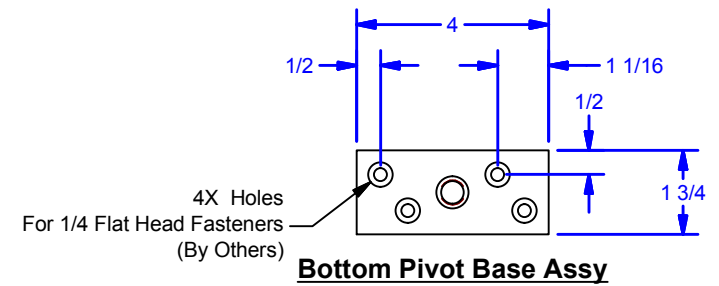


Parts List				
ITEM	QTY	PART #	DESCRIPTION	STOCK #
1	1	0000028	Top Pivot Assembly	335
2	1	0000008	Bottom Pivot Assembly	336
3	1	0000107	#5 Track	5P10'
4	5	FHPSMS 1/4-14 x 1 1/2 Zinc	Flat Head Phillips Sheet Metal Screw	
5	2	FHPSMS No. 12-14 x 1 1/2 Zinc	Flat Head Phillips Sheet Metal Screw	



ALL DIMENSIONS IN INCHES

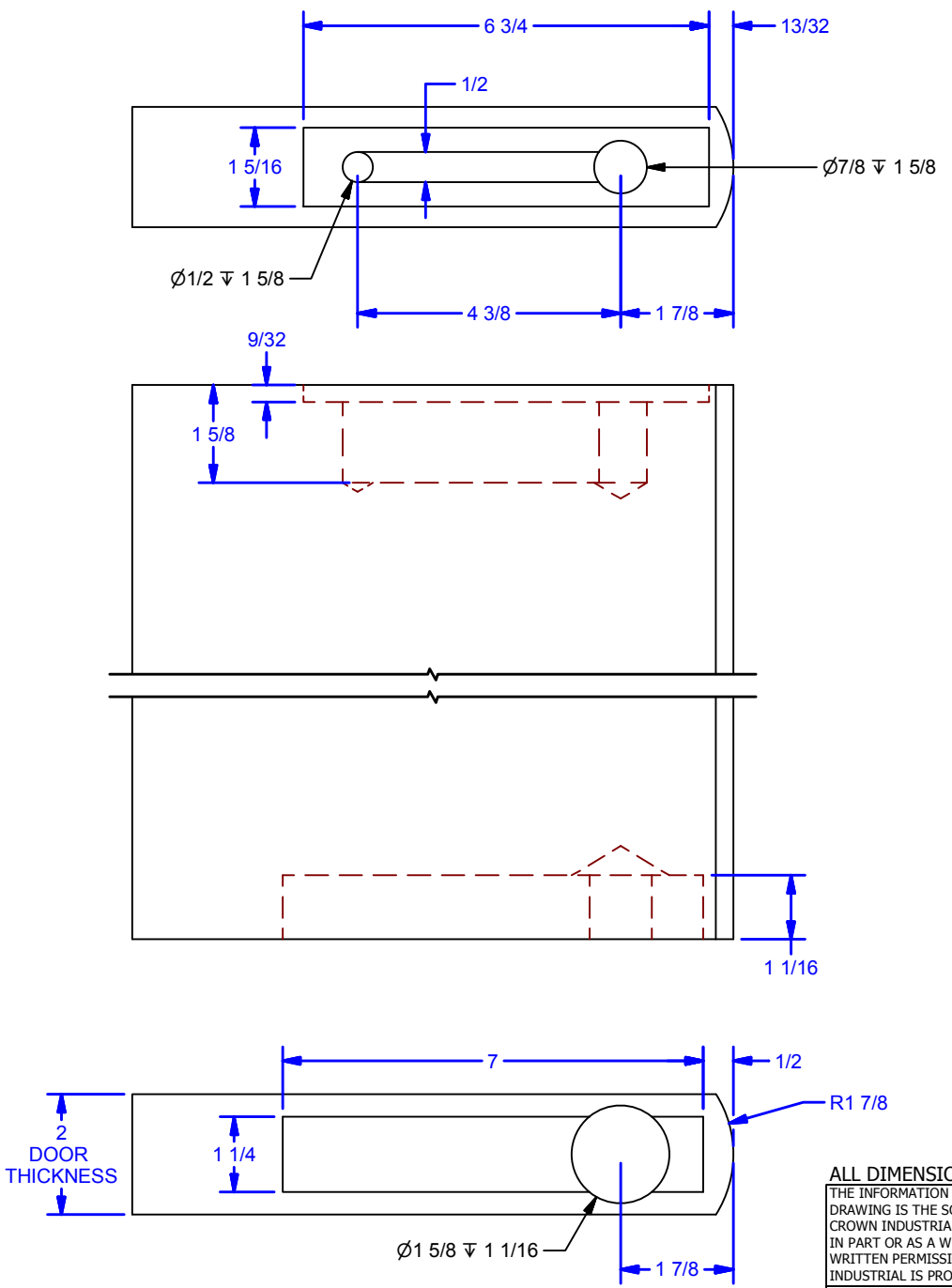
THE INFORMATION CONTAINED IN THIS DRAWING IS THE SOLE PROPERTY OF CROWN INDUSTRIAL. ANY REPRODUCTION IN PART OR AS A WHOLE WITHOUT THE WRITTEN PERMISSION OF CROWN INDUSTRIAL IS PROHIBITED.	ID #: 0000010	STOCK PART #: 335/336
DESCRIPTION: Top/Bottom Pivot Set for #5 Track, bifold	MATERIAL:	
FINISH:	# PCS:	REV:

CROWN INDUSTRIAL
So. San Francisco, Ca
(650) 952-5150
www.crown-industrial.com

DWG #: 335/336
DRAWN: BCM 11/10/2010
SHEET #1
File: 0000009.idw

Available Finishes:
335/336: Clear Zinc
335/336-10B: Dark Bronze

4 3 2 1



ALL DIMENSIONS IN INCHES

THE INFORMATION CONTAINED IN THIS DRAWING IS THE SOLE PROPERTY OF CROWN INDUSTRIAL. ANY REPRODUCTION IN PART OR AS A WHOLE WITHOUT THE WRITTEN PERMISSION OF CROWN INDUSTRIAL IS PROHIBITED.	ID #:	STOCK PART #:
	0000010	
DESCRIPTION:	MATERIAL:	
Door Prep for Top/Bottom Pivot	Steel, Mild	
FINISH:	# PCS:	REV:
	1	



CROWN INDUSTRIAL
 So. San Francisco, Ca
 (650) 952-5150
 www.crown-industrial.com

DWG #: 335/336
 DRAWN: BCM 11/10/2010
 SHEET #2
 File: 0000009.idw

4 3 2 1