

4

3

2

1

D

D

C

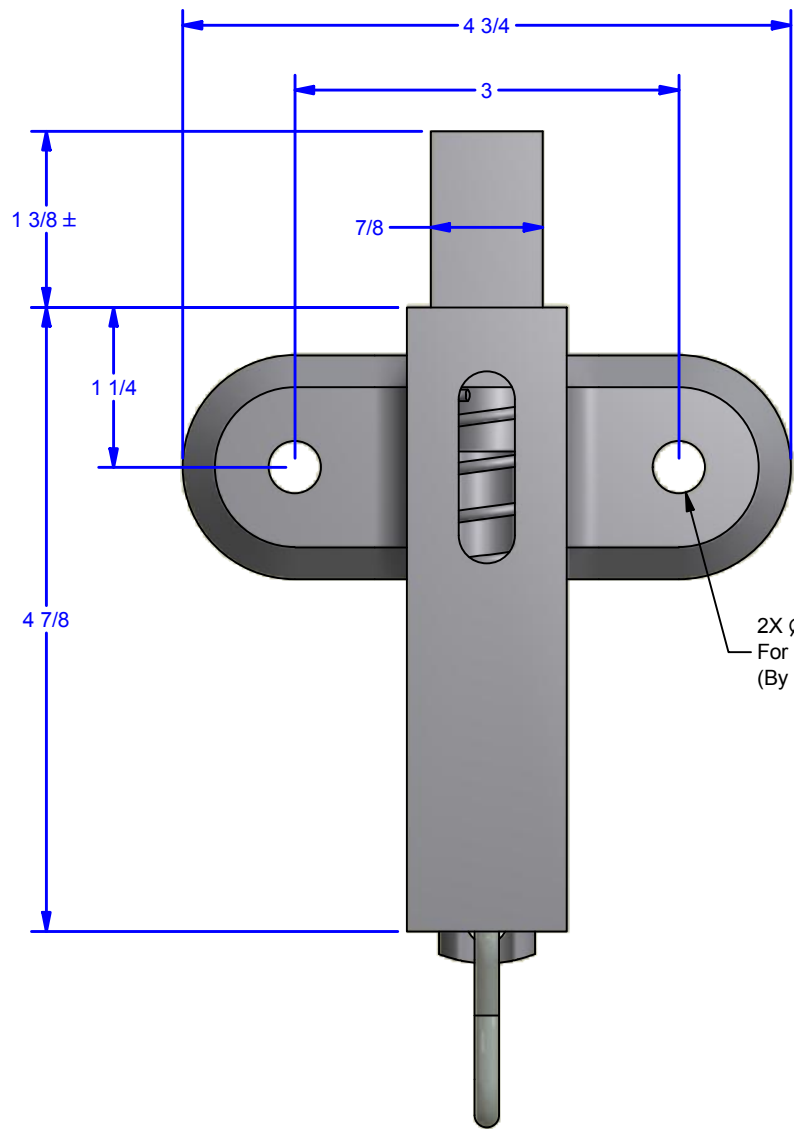
C

B

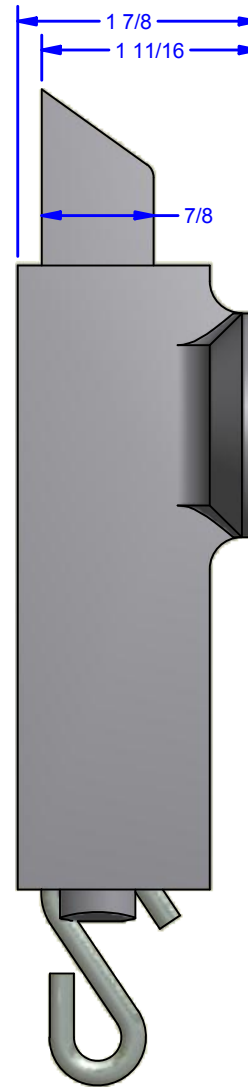
B

A

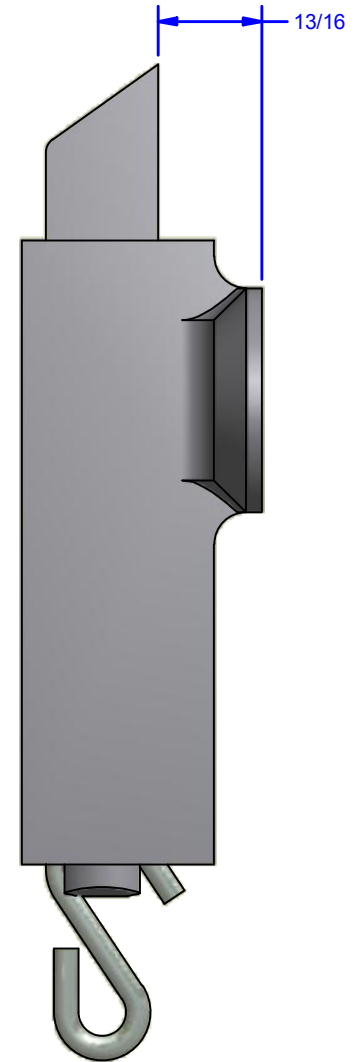
A



**434P248 Bolt Configuration**



**434P27 Bolt Configuration**



**Keeper Must Be Ordered Separately**  
Includes 36" Steel chain with pull ring and chain keeper.

**Available Finishes:**  
0514.00036: Powder Coat Pebble Tan  
0514.00036SC: Powder Coat Black  
0514.00036ZC: Clear Zinc Plated

DWG #: 434P96  
DRAWN:BCM 3/13/2015  
SHEET #1  
File: 0000564.idw

**ALL DIMENSIONS IN INCHES**

THE INFORMATION CONTAINED IN THIS DRAWING IS THE SOLE PROPERTY OF CROWN INDUSTRIAL. ANY REPRODUCTION IN PART OR AS A WHOLE WITHOUT THE WRITTEN PERMISSION OF CROWN INDUSTRIAL IS PROHIBITED.	ID #:	0001943	STOCK PART #:	0434.00096
	MATERIAL:			
DESCRIPTION: Medium Duty Spring Bolt				
FINISH:			# PCS:	REV:



**CROWN INDUSTRIAL**  
So. San Francisco, Ca  
(650) 952-5150  
www.crown-industrial.com

4

3

2

1

4

3

2

1

D

D

C

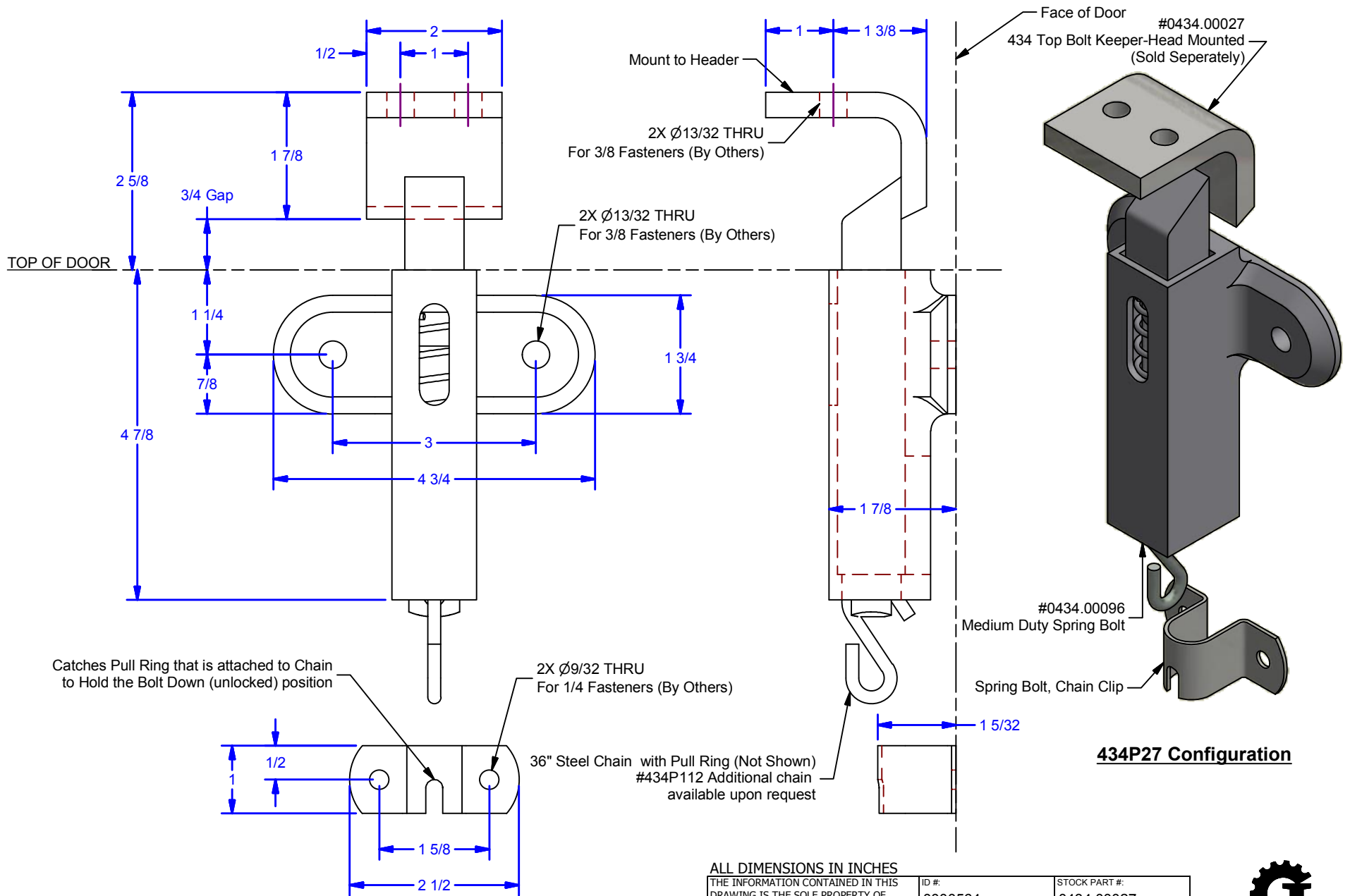
C

B

B

A

A



**434P27 Configuration**

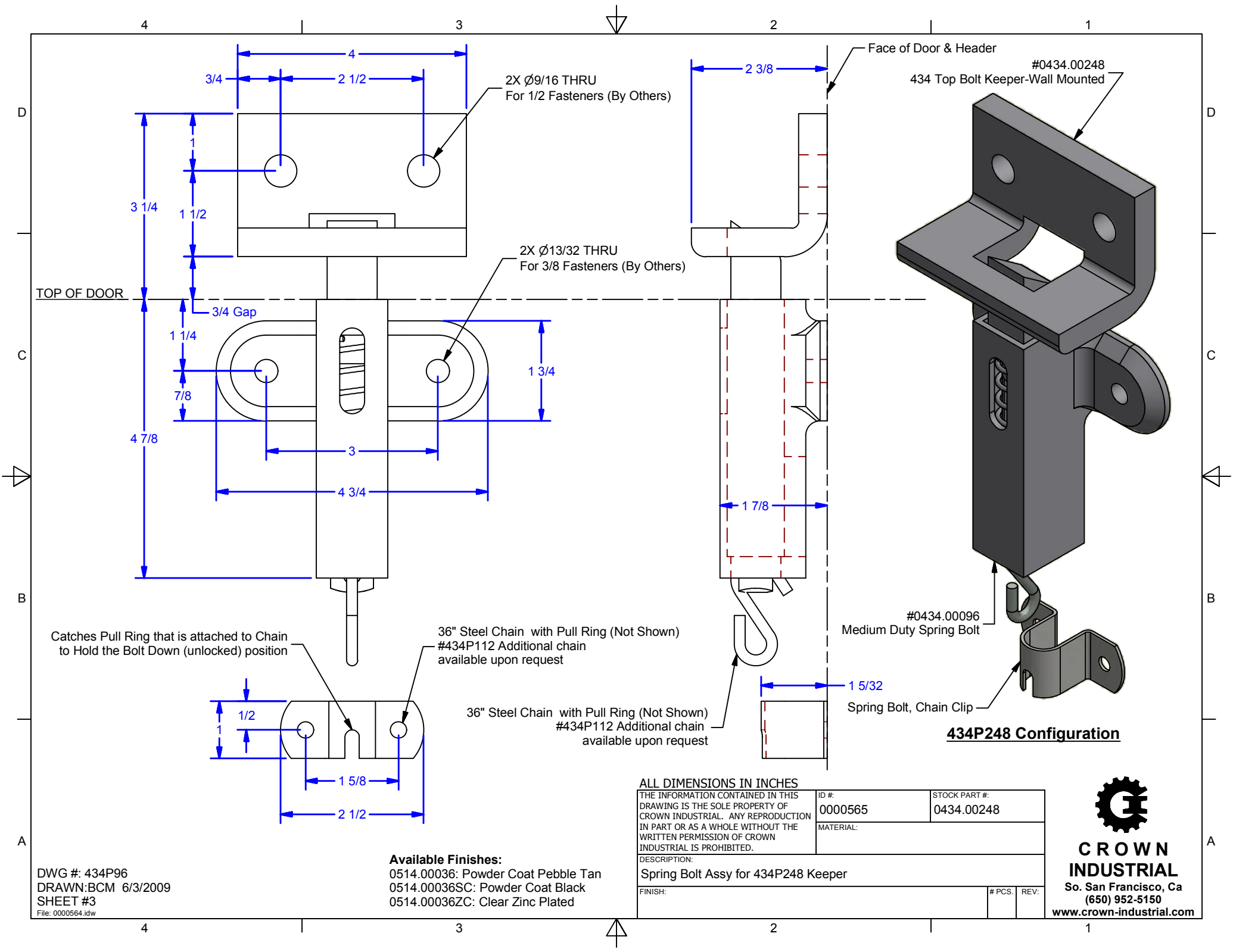
**Available Finishes:**  
 0514.00036: Powder Coat Pebble Tan  
 0514.00036SC: Powder Coat Black  
 0514.00036ZC: Clear Zinc Plated

DWG #: 434P96  
 DRAWN:BCM 6/3/2009  
 SHEET #2  
 File: 0000564.idw

<b>ALL DIMENSIONS IN INCHES</b>		ID #:	STOCK PART #:
THE INFORMATION CONTAINED IN THIS DRAWING IS THE SOLE PROPERTY OF CROWN INDUSTRIAL. ANY REPRODUCTION IN PART OR AS A WHOLE WITHOUT THE WRITTEN PERMISSION OF CROWN INDUSTRIAL IS PROHIBITED.		0000564	0434.00027
DESCRIPTION:		MATERIAL:	
Spring Bolt Assy for 434P27 Keeper			
FINISH:		# PCS:	REV:



**CROWN INDUSTRIAL**  
 So. San Francisco, Ca  
 (650) 952-5150  
 www.crown-industrial.com



4 3 2 1

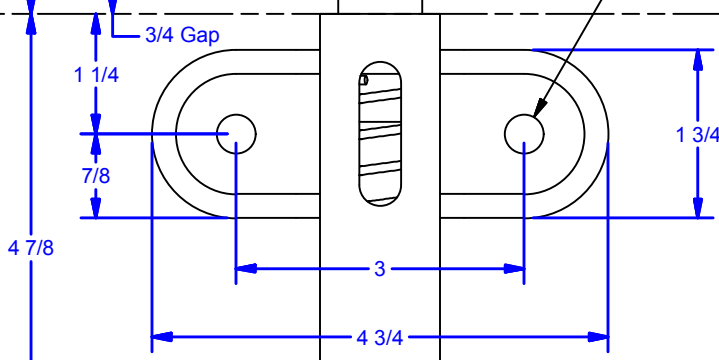
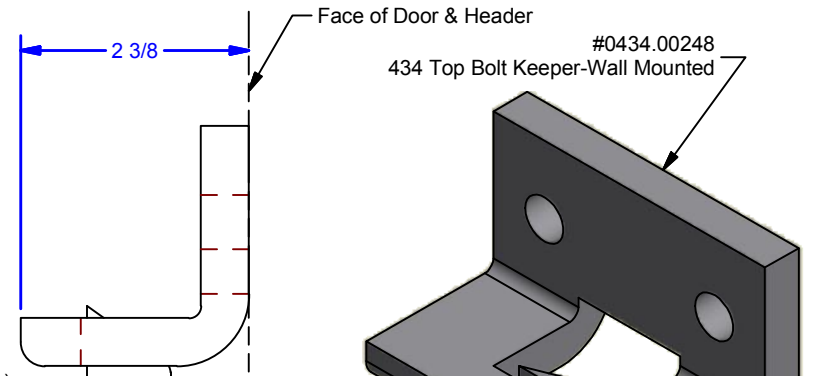
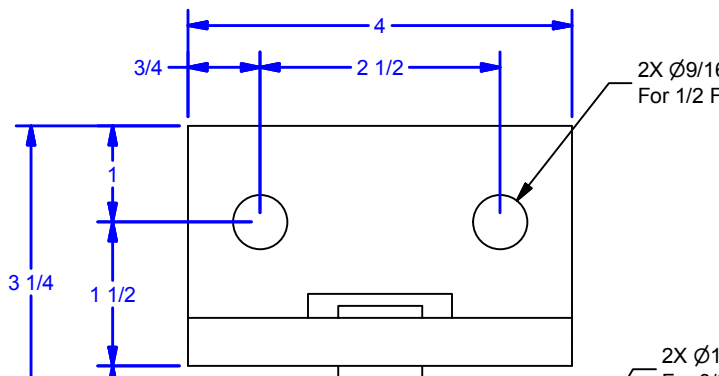
D

TOP OF DOOR

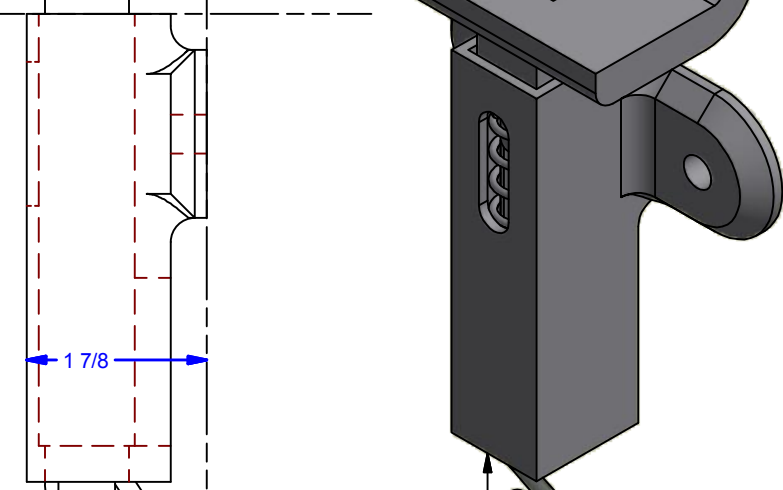
C

B

A



2X Ø13/32 THRU  
For 3/8 Fasteners (By Others)



Catches Pull Ring that is attached to Chain to Hold the Bolt Down (unlocked) position

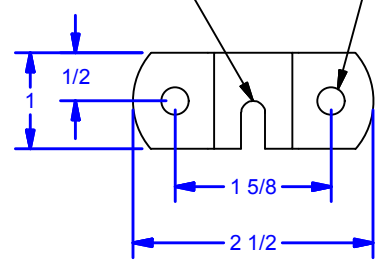
36" Steel Chain with Pull Ring (Not Shown)  
#434P112 Additional chain available upon request

#0434.00096  
Medium Duty Spring Bolt

36" Steel Chain with Pull Ring (Not Shown)  
#434P112 Additional chain available upon request

1 5/32  
Spring Bolt, Chain Clip

**434P248 Configuration**



**Available Finishes:**  
0514.00036: Powder Coat Pebble Tan  
0514.00036SC: Powder Coat Black  
0514.00036ZC: Clear Zinc Plated

**ALL DIMENSIONS IN INCHES**

THE INFORMATION CONTAINED IN THIS DRAWING IS THE SOLE PROPERTY OF CROWN INDUSTRIAL. ANY REPRODUCTION IN PART OR AS A WHOLE WITHOUT THE WRITTEN PERMISSION OF CROWN INDUSTRIAL IS PROHIBITED.	ID #: 0000565	STOCK PART #: 0434.00248
DESCRIPTION: Spring Bolt Assy for 434P248 Keeper	MATERIAL:	
FINISH:	# PCS:	REV:



**CROWN INDUSTRIAL**  
So. San Francisco, Ca  
(650) 952-5150  
www.crown-industrial.com

DWG #: 434P96  
DRAWN:BCM 6/3/2009  
SHEET #3  
File: 0000564.idw

4 3 2 1