

4

3

2

1

D

D

C

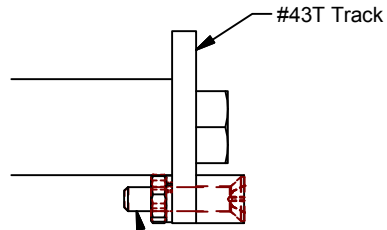
C

B

B

A

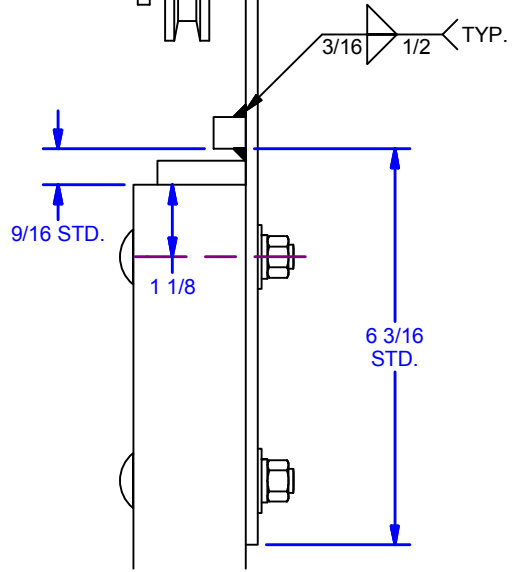
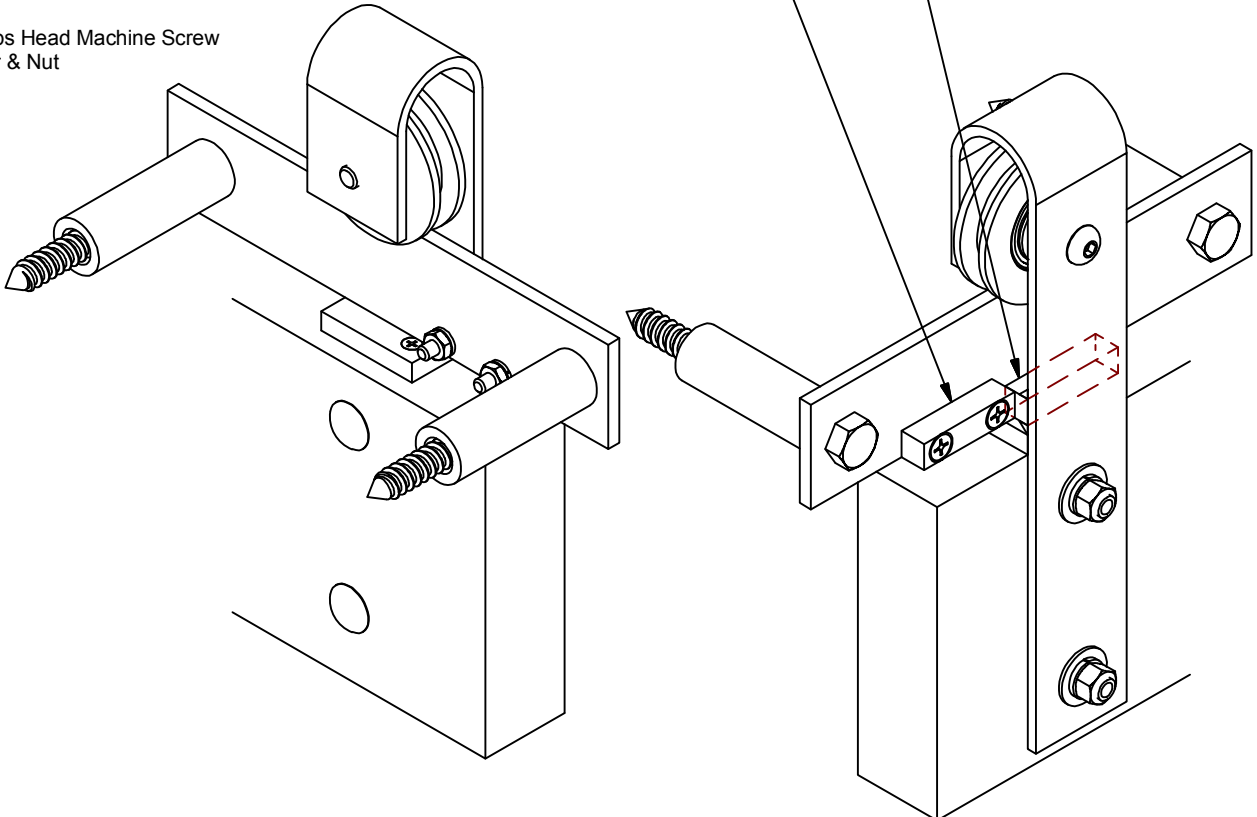
A



0000791 Hanger Track Stop Plate
(Welded to flat track hanger)

[MOUNTED ON HANGER CLOSEST TO OPENING
WHEN DOOR IS IN FULL OPEN POSITION]

0000792 Track Mounted Stop Plate for Slidepast
(Option to be welded to track)
{Indicate if field or factory located with order}



(1 ea.) Kit per Door.
Hardware is made to order.

ALL DIMENSIONS IN INCHES

THE INFORMATION CONTAINED IN THIS DRAWING IS THE SOLE PROPERTY OF CROWN INDUSTRIAL. ANY REPRODUCTION IN PART OR AS A WHOLE WITHOUT THE WRITTEN PERMISSION OF CROWN INDUSTRIAL IS PROHIBITED.	ID #:	0001002	STOCK PART #:	43SxB12	
	MATERIAL:	Welded Steel Mild			
DESCRIPTION: Slidepast Flat Track Stop, Welded					
FINISH:	Painted	# PCS:	1	REV:	1



CROWN INDUSTRIAL
So. San Francisco, Ca
(650) 952-5150
www.crown-industrial.com

DWG #: 0000790
DRAWN:BCM 12/15/2008
SHEET #2
File: 0000790.idw

4

3

2

1

