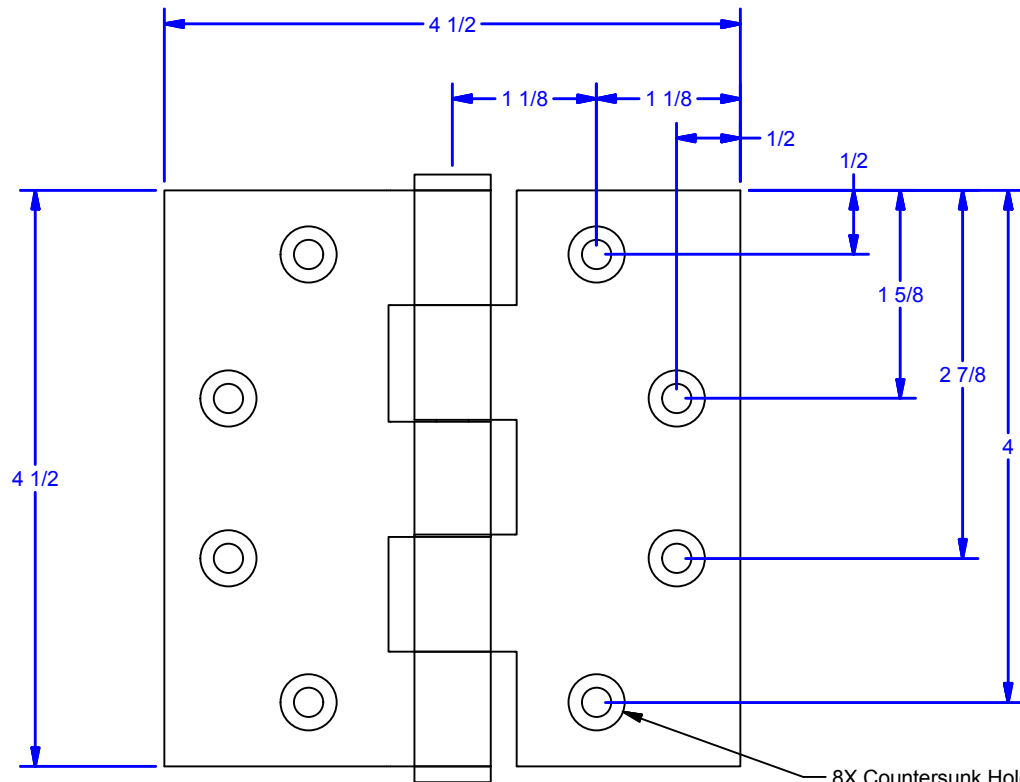
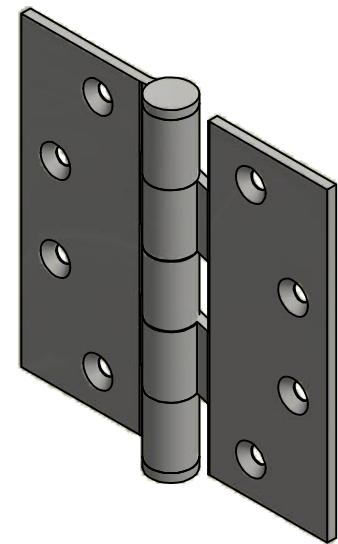
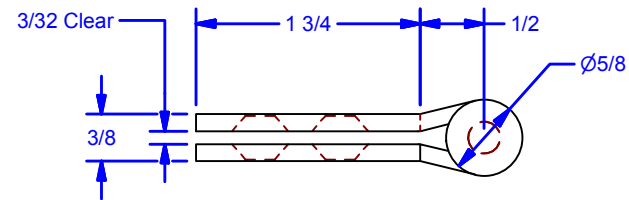


Open Position



8X Countersunk Holes for #12 Flat Head Fasteners



Closed Position

Fasteners Included:
 #12 x 1" Flat Head Phillips Sheet Metal Screw (Wood Door)
 #12-24 x 1/2" Undercut Flat Head Phillips Type-F Screw (Metal Door)

Commercial Grade, 5-Knuckle,
 Removable Pin, Square Corner Hinge

ALL DIMENSIONS IN INCHES

THE INFORMATION CONTAINED IN THIS DRAWING IS THE SOLE PROPERTY OF CROWN INDUSTRIAL. ANY REPRODUCTION IN PART OR AS A WHOLE WITHOUT THE WRITTEN PERMISSION OF CROWN INDUSTRIAL IS PROHIBITED.	ID #:	STOCK PART #:
	0001488	4.5BH
DESCRIPTION:		
Full Mortise Butt Hinge		
FINISH:		# PCS. REV:
		1 1



CROWN INDUSTRIAL

So. San Francisco, Ca
 (650) 952-5150

www.crown-industrial.com