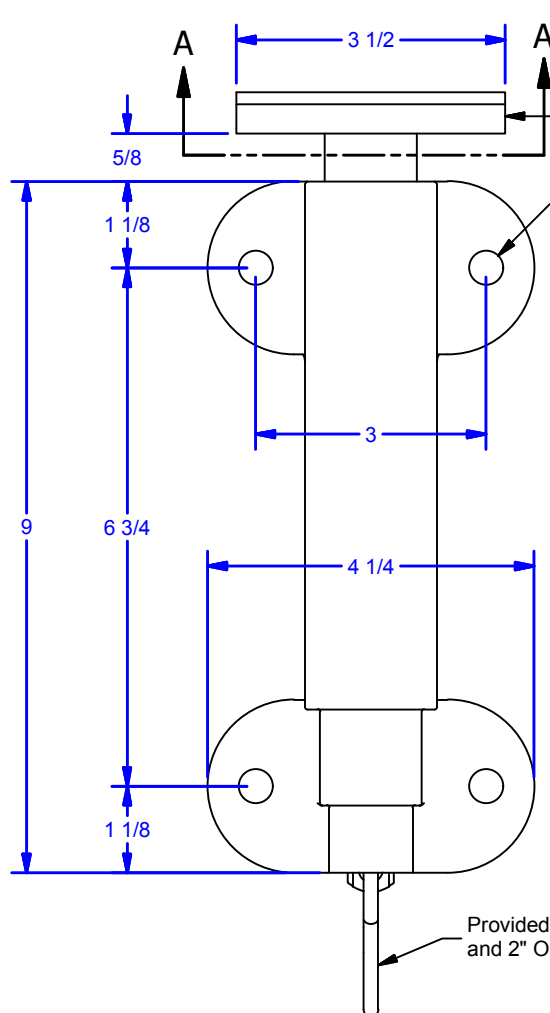


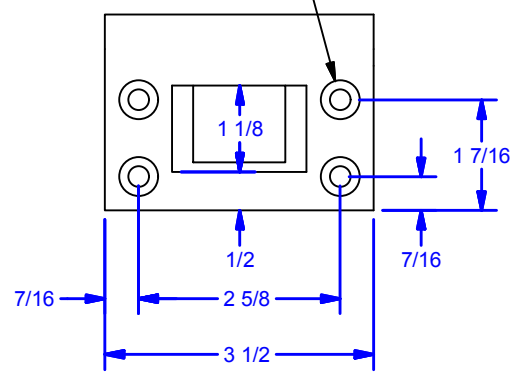
4 3 2 1



514-FK Flat Keeper for 514P38 Spring Bolt, S.S.

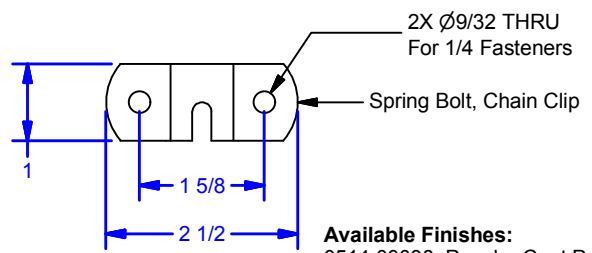
4X Ø7/16 THRU For 3/8 Fastener

4X Ø17/64 THRU For 1/4 Flat Head Fasteners (By Others)



SECTION A-A
(Flush Keeper)

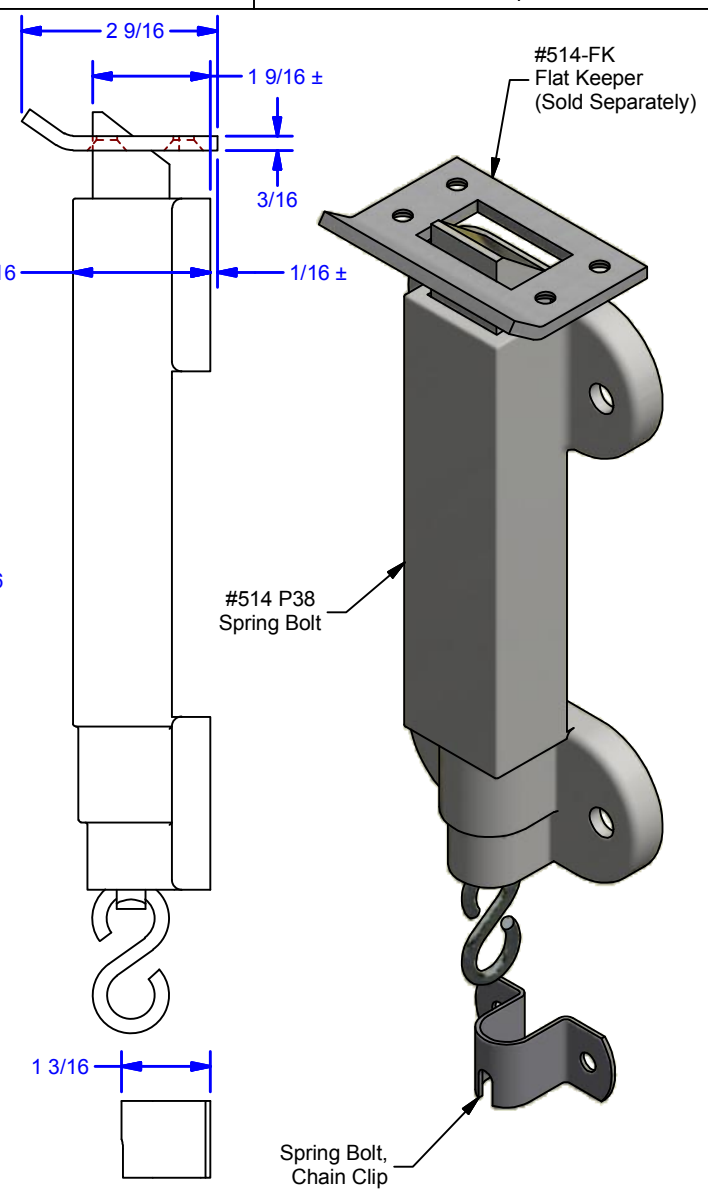
Provided with 60" of Sash Chain and 2" O.D. Pull Ring



FRONT

Available Finishes:
0514.00038: Powder Coat Pebble Tan
0514.00038SC: Powder Coat Black
0514.00038ZC: Clear Zinc Plated

- Fasteners Included with Hardware:
- (4 ea.) 3/8-16 x 3-1/2" Fully Threaded Carriage Bolts with Flat Washers, & Nuts, Clear Zinc
 - (2 ea.) 3/8" x 2-1/2" Lag Screws, Clear Zinc
 - (2 ea.) #14 x 1-1/4" Wood Screws, Clear Zinc



#514-FK Flat Keeper (Sold Separately)

#514 P38 Spring Bolt

Spring Bolt, Chain Clip

ALL DIMENSIONS IN INCHES

THE INFORMATION CONTAINED IN THIS DRAWING IS THE SOLE PROPERTY OF CROWN INDUSTRIAL. ANY REPRODUCTION IN PART OR AS A WHOLE WITHOUT THE WRITTEN PERMISSION OF CROWN INDUSTRIAL IS PROHIBITED.

DESCRIPTION:
514 P38 Spring Bolt w/ Keeper

ID #: 0001622
MATERIAL: Steel

STOCK PART #: 0514.00038

FINISH: # PCS: REV:



CROWN INDUSTRIAL
So. San Francisco, Ca
(650) 952-5150
www.crown-industrial.com

DWG #: 514
DRAWN:BCM 4/16/2014
SHEET #3
File: 0001616.idw

4 3 2 1