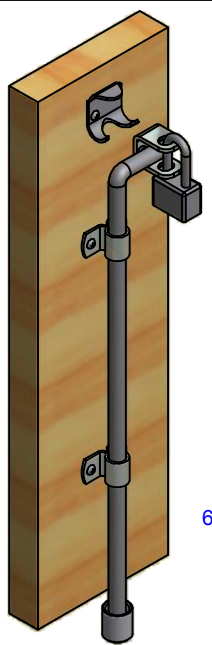
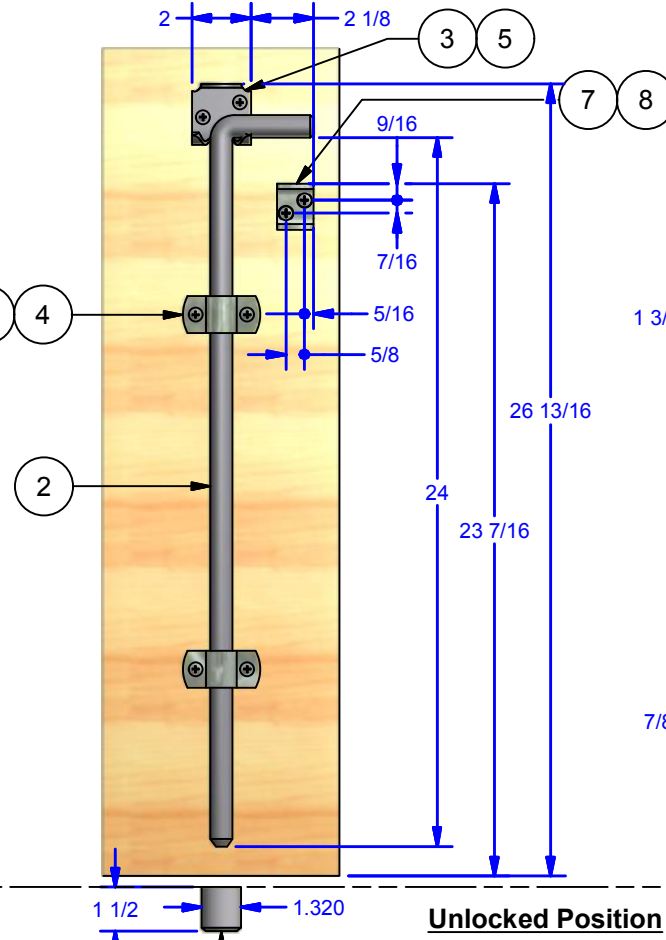
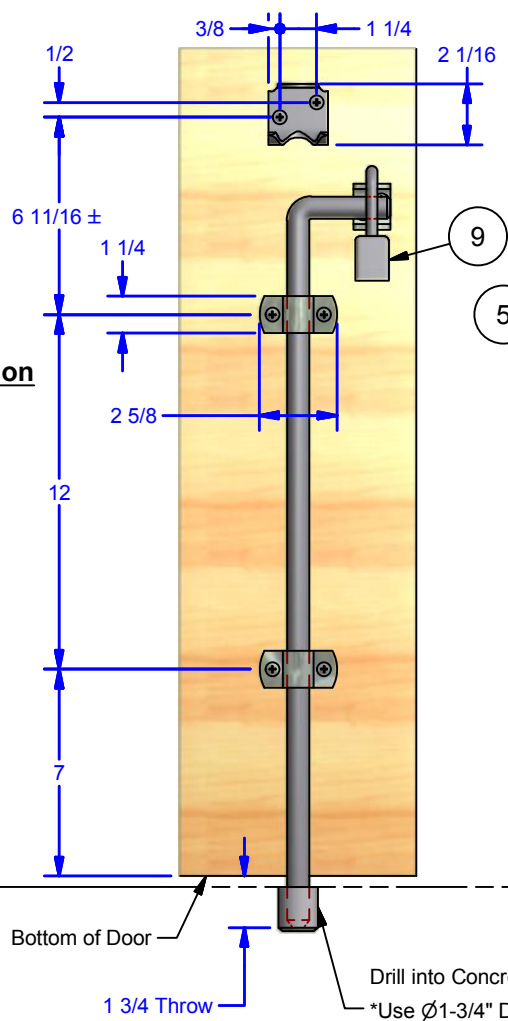


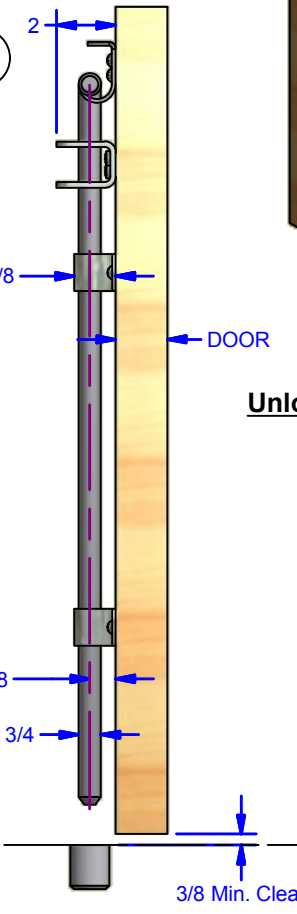
Parts List			
ITEM	QTY	DESCRIPTION	STOCK #
2	1	Cane	
3	1	524p23 Cane Retainer	
4	2	524P23 Guide Clip	
5	6	Round Head Phillips Wood Screw, Zinc	14-10 x 1-1/4
6	1	524P43 Floor Insert Sleeve for 524P23	0524.00043
7	1	Pad Lockable Assembly for 524 Cane Bolt (OPTIONAL)	0524PL-Z
8	2	Pan Head Phillips Sheet Metal Screw	1/4-14 x 1 1/4
9	1	Padlock (By Others) Max. Shackle Dia: 1/2"; Min. Vertical Clear: 1-3/4"; Min. Horz. Clear: 1"	



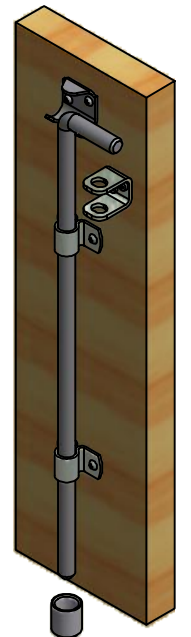
Locked Position



Unlocked Position



Unlocked Position



DWG #: 524P23
 DRAWN:BCM 3/6/2009
 SHEET #1
 File: 0000461.idw

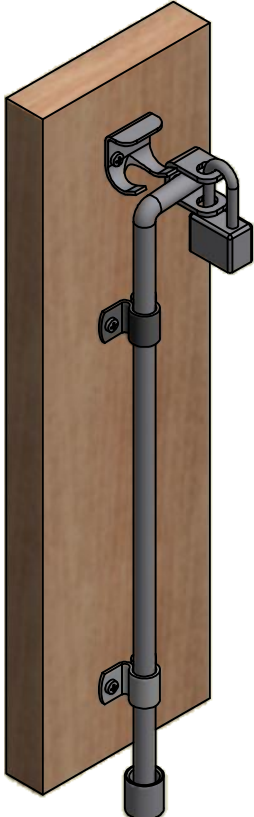
*Alternative Finish: #0524.00023BZC black zinc

ALL DIMENSIONS IN INCHES		
THE INFORMATION CONTAINED IN THIS DRAWING IS THE SOLE PROPERTY OF CROWN INDUSTRIAL. ANY REPRODUCTION IN PART OR AS A WHOLE WITHOUT THE WRITTEN PERMISSION OF CROWN INDUSTRIAL IS PROHIBITED.	ID #: 0000461	STOCK PART #: 524P23
DESCRIPTION: Cane Bolt 3/4" x 24"	MATERIAL: Steel	
FINISH: US2C Zinc	# PCS:	REV: A

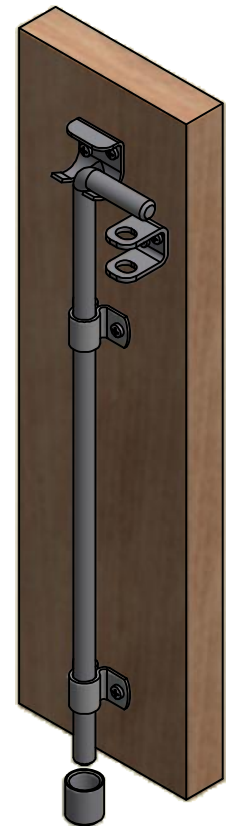
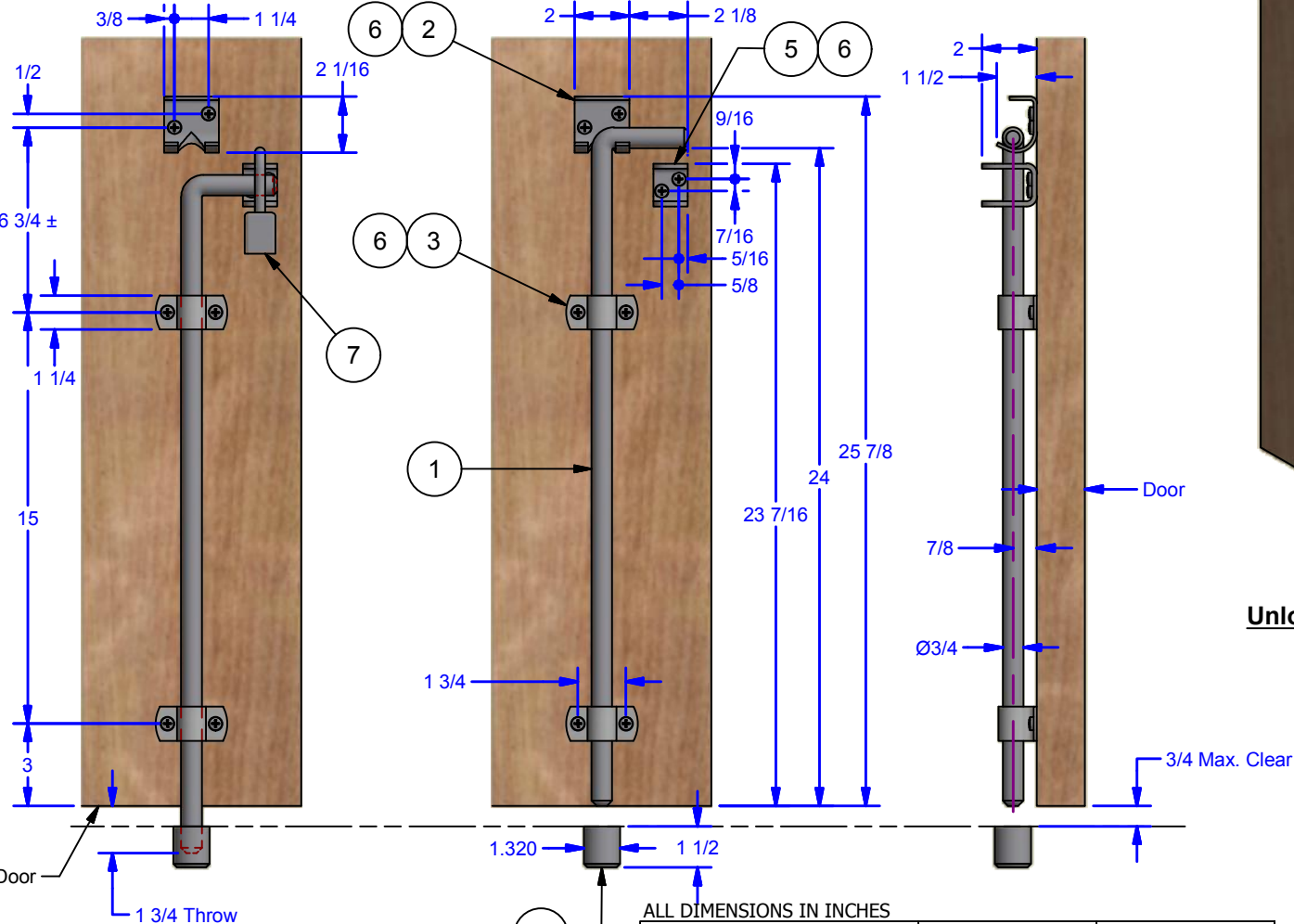


CROWN INDUSTRIAL
 So. San Francisco, Ca
 (650) 952-5150
 www.crown-industrial.com

Parts List			
ITEM	QTY	DESCRIPTION	STOCK #
1	1	524P23 Cane, S.S.	
2	1	Cane Retainer, S.S.	
3	2	524P23 Guide Clip, Stainless Steel	
4	1	Keeper for 0524.00023 Cane Bolt-SS #2B	0524.00043-S
5	1	Pad Lockable Assembly for 524 S.S. Cane Bolt	0524PL-S
6	8	Pan Head Phillips Sheet Metal Screw	1/4-14 x 1 1/4
7	1	Padlock (By Others)	



Locked Position



Unlocked Position

ALL DIMENSIONS IN INCHES		ID #:	STOCK PART #:
THE INFORMATION CONTAINED IN THIS DRAWING IS THE SOLE PROPERTY OF CROWN INDUSTRIAL. ANY REPRODUCTION IN PART OR AS A WHOLE WITHOUT THE WRITTEN PERMISSION OF CROWN INDUSTRIAL IS PROHIBITED.		0001021-1	0524.00023-S
DESCRIPTION:		MATERIAL:	
Cane Bolt 3/4" x 24", 304 Stainless Steel		304 Stainless Steel	
FINISH:	# PCS:	REV:	
Brushed	1	A	

CROWN INDUSTRIAL
So. San Francisco, Ca
(650) 952-5150
www.crown-industrial.com