

4

3



2

1

D

D

C

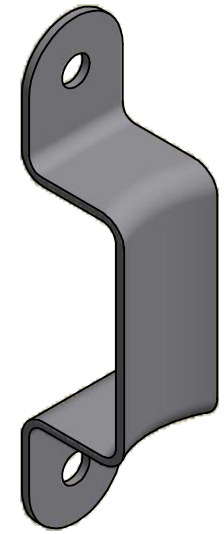
C

B

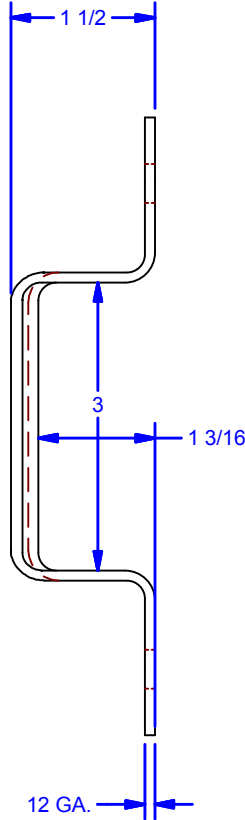
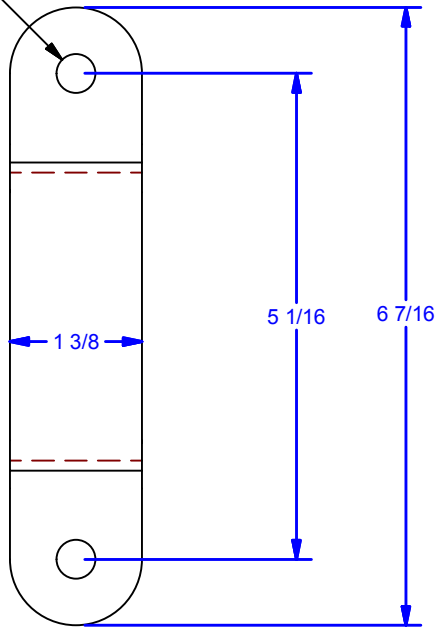
B

A

A



2X Ø13/32 THRU
For 3/8 Fasteners



Available Finishes:
0071.00001: Powder Coat Pebble Tan
0071.00001SC: Powder Coat Black
0071.00001ZC: Clear Zinc Plated

DRAWING NOT TO BE USED AS A TEMPLATE

ALL DIMENSIONS IN INCHES

THE INFORMATION CONTAINED IN THIS DRAWING IS THE SOLE PROPERTY OF CROWN INDUSTRIAL. ANY REPRODUCTION IN PART OR AS A WHOLE WITHOUT THE WRITTEN PERMISSION OF CROWN INDUSTRIAL IS PROHIBITED.	PART #:	STOCK #:
	0001057	0071.00001
DESCRIPTION:	MATERIAL:	
71P1 Bow Handle	Steel, Mild	
FINISH:	# PCS:	REV:



CROWN INDUSTRIAL
So. San Francisco, Ca
(650) 952-5150
www.crown-industrial.com

DWG #: 71P1
DRAWN:BCM 7/10/2008
SHEET #1
File: 0001057.idw

4

3



2

1