

4

3

2

1

D

D

C

C

B

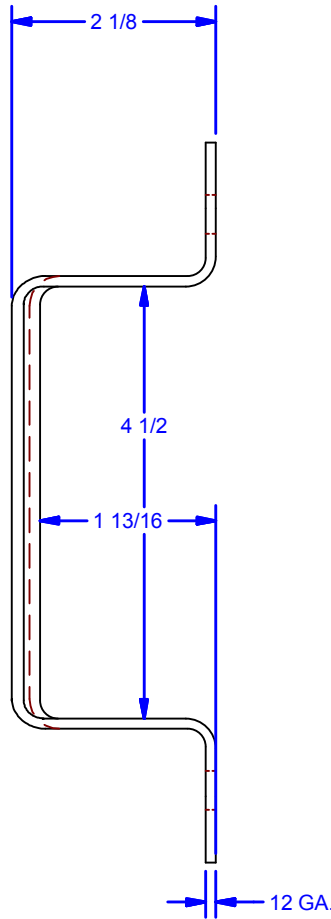
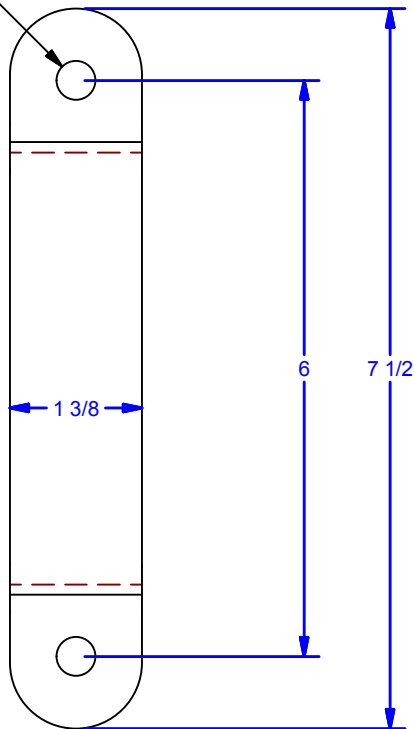
B

A

A



2X Ø13/32 THRU
For 3/8 Fasteners



Available Finishes:
 0071.00002: Powder Coat Pebble Tan
 0071.00002SC: Powder Coat Black
 0071.00002ZC: Clear Zinc Plated

DRAWING NOT TO BE USED AS A TEMPLATE

DWG #: 71P2
 DRAWN:BCM 7/10/2008
 SHEET #1
 File: 0000061.idw

ALL DIMENSIONS IN INCHES

THE INFORMATION CONTAINED IN THIS DRAWING IS THE SOLE PROPERTY OF CROWN INDUSTRIAL. ANY REPRODUCTION IN PART OR AS A WHOLE WITHOUT THE WRITTEN PERMISSION OF CROWN INDUSTRIAL IS PROHIBITED.	ID #:	0000061	STOCK PART #:	0071.00002
	MATERIAL:	Steel, Mild		
DESCRIPTION: 71P2 Bow Handle				
FINISH:		# PCS:		REV:



CROWN INDUSTRIAL
 So. San Francisco, Ca
 (650) 952-5150
 www.crown-industrial.com

4

3

2

1