

4

3

2

1

D

D

C

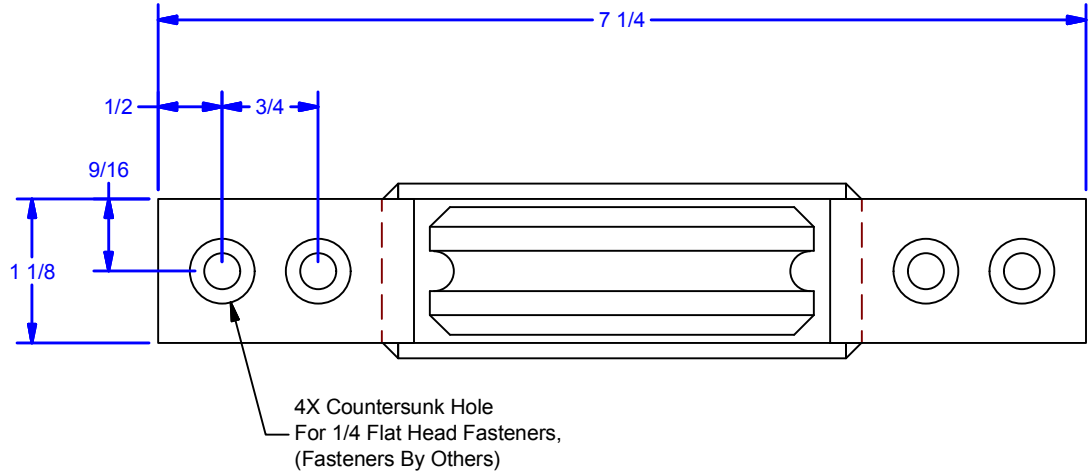
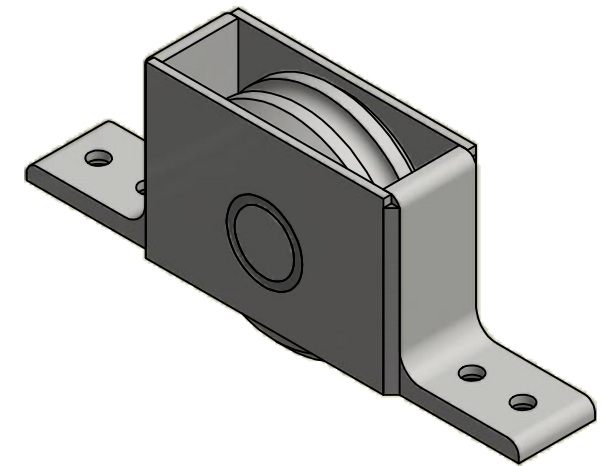
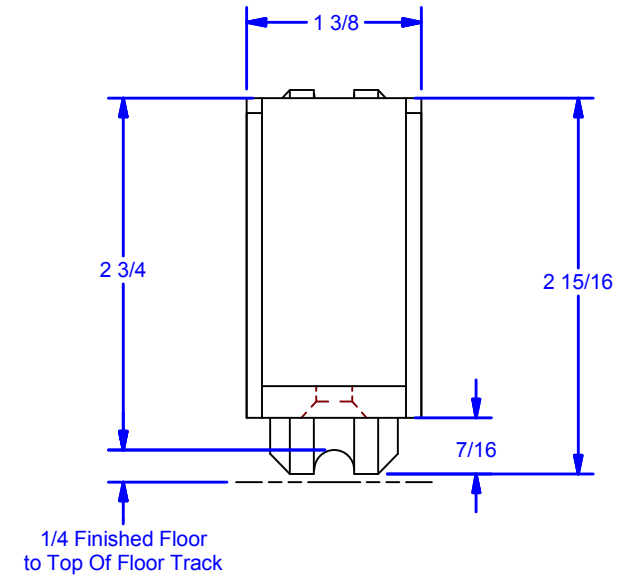
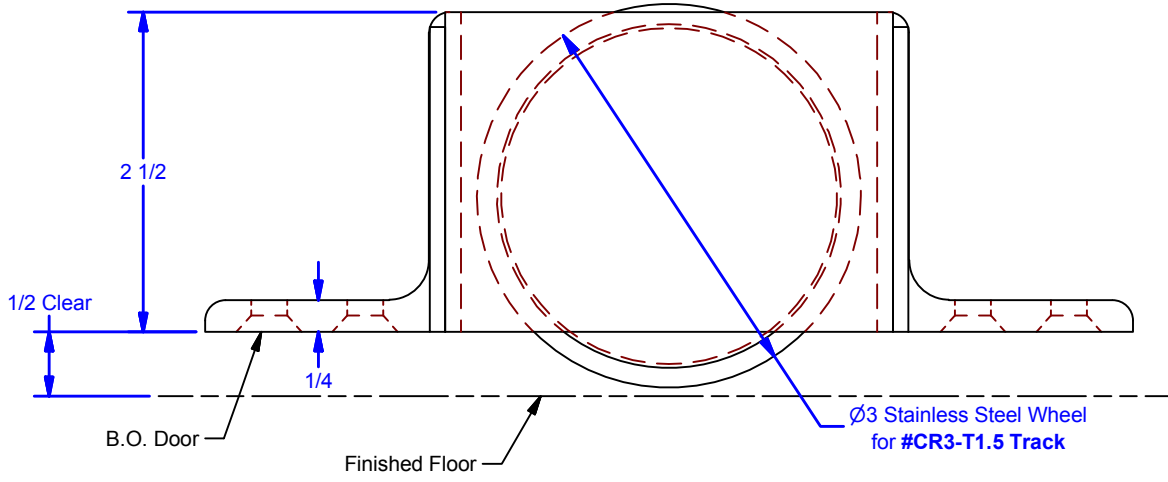
C

B

B

A

A



Weight Capacity: 1300 lbs per Pair

ALL DIMENSIONS IN INCHES

THE INFORMATION CONTAINED IN THIS DRAWING IS THE SOLE PROPERTY OF CROWN INDUSTRIAL. ANY REPRODUCTION IN PART OR AS A WHOLE WITHOUT THE WRITTEN PERMISSION OF CROWN INDUSTRIAL IS PROHIBITED.	ID #:	0001678-01	STOCK PART #:	CR3xT1.5W
	MATERIAL:	Welded Steel Mild		
DESCRIPTION: Bottom Roller w/ S.S. Wheel, for CR3-T1.5 Floor Track				
FINISH:	Painted	# PCS:	REV:	



**CROWN INDUSTRIAL**  
 So. San Francisco, Ca  
 (650) 952-5150  
 www.crown-industrial.com

DWG #: 0001676  
 DRAWN: BCM 6/25/2014  
 SHEET #1  
 File: 0001676.idw

4

3

2

1



4

3

2

1

D

D

C

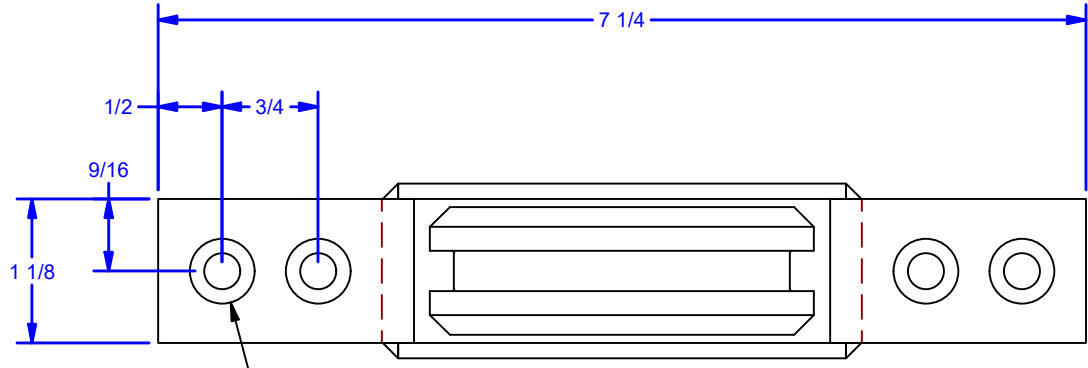
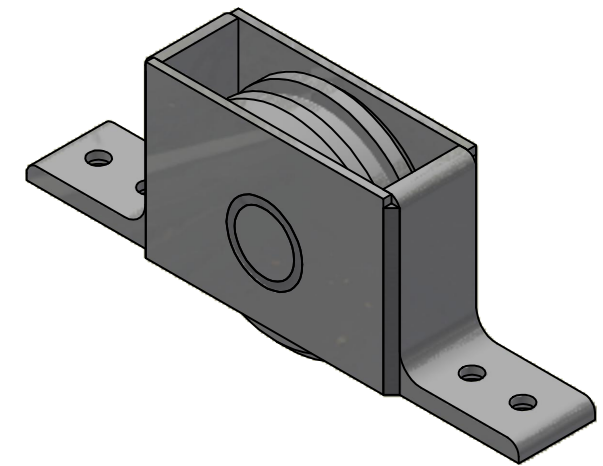
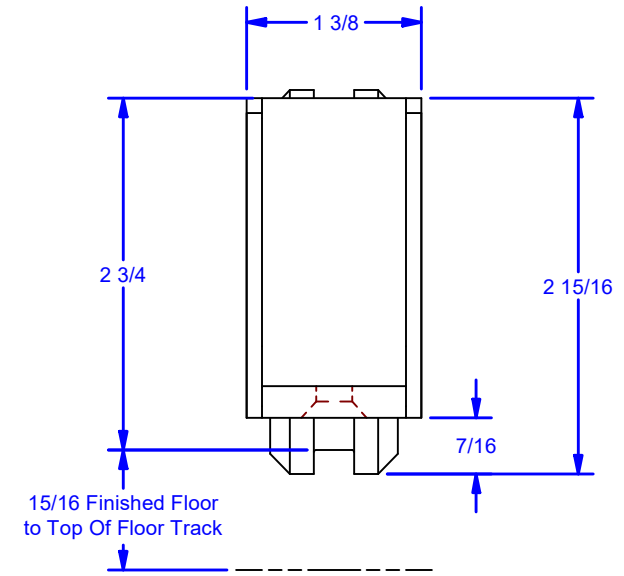
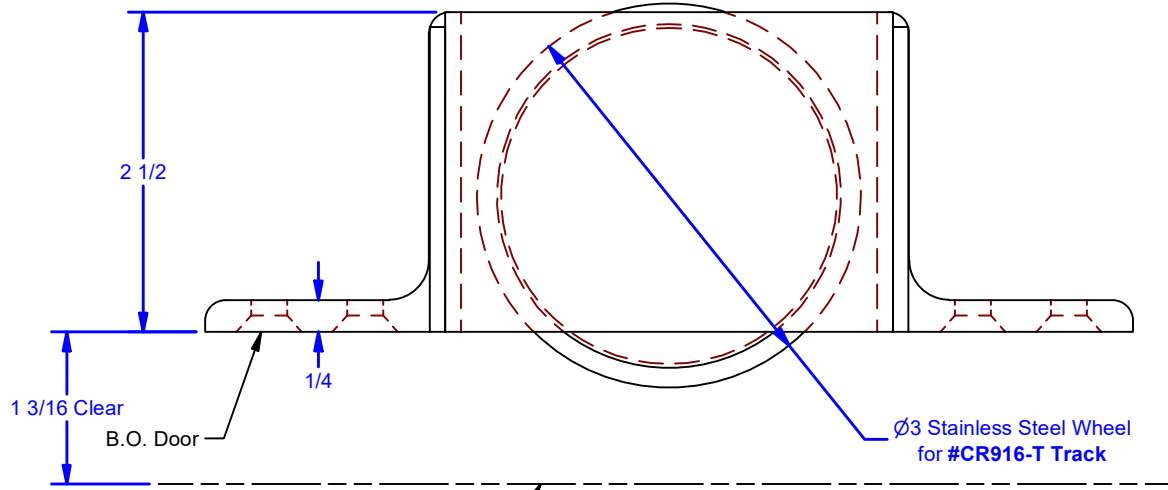
C

B

B

A

A



Weight Capacity: 1300 lbs per Pair

ALL DIMENSIONS IN INCHES

THE INFORMATION CONTAINED IN THIS DRAWING IS THE SOLE PROPERTY OF CROWN INDUSTRIAL. ANY REPRODUCTION IN PART OR AS A WHOLE WITHOUT THE WRITTEN PERMISSION OF CROWN INDUSTRIAL IS PROHIBITED.

ID #: 0001678-02

STOCK PART #: CR3x916TW

MATERIAL: Welded Steel Mild

DESCRIPTION: Bottom Roller w/ S.S. Wheel, for CR916-T Floor Track

FINISH: Painted

# PCS: REV:

DWG #: 0001676  
DRAWN:BCM 6/25/2014  
SHEET #2  
File: 0001676.idw



**CROWN INDUSTRIAL**  
So. San Francisco, Ca  
(650) 952-5150  
www.crown-industrial.com

4

3

2

1



4

3

2

1

D

D

C

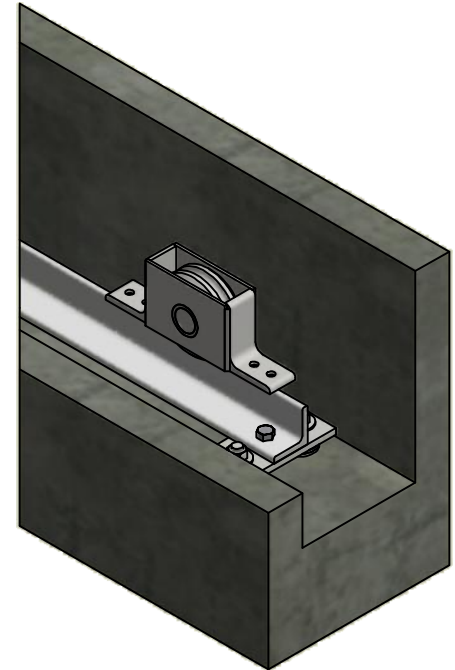
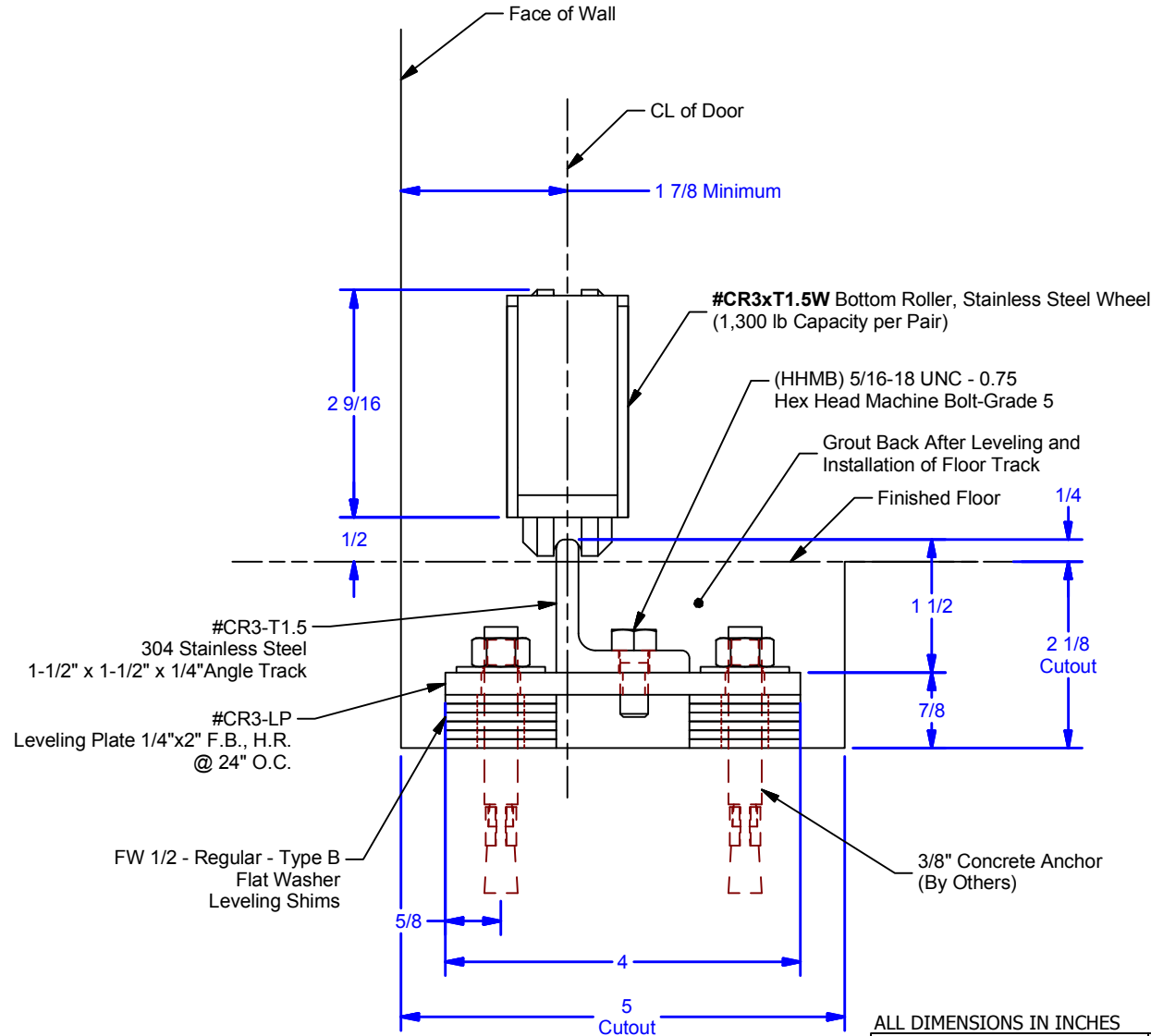
C

B

B

A

A



ALL DIMENSION  $\pm 1/32"$   
**DO NOT USE AS TEMPLATE, REFERENCE ONLY DRAWING**

**ALL DIMENSIONS IN INCHES**

THE INFORMATION CONTAINED IN THIS DRAWING IS THE SOLE PROPERTY OF CROWN INDUSTRIAL. ANY REPRODUCTION IN PART OR AS A WHOLE WITHOUT THE WRITTEN PERMISSION OF CROWN INDUSTRIAL IS PROHIBITED.

ID #:	0001686	STOCK PART #:	CR3xT1.5W
MATERIAL:			

DESCRIPTION:  
**Bottom Roller & Floor Track : Leveling Plate Option**

FINISH:	# PCS:	REV:



**CROWN INDUSTRIAL**  
 So. San Francisco, Ca  
 (650) 952-5150  
 www.crown-industrial.com

DWG #: 0001676  
 DRAWN:BCM 6/26/2014  
 SHEET #3  
 File: 0001676.idw

4

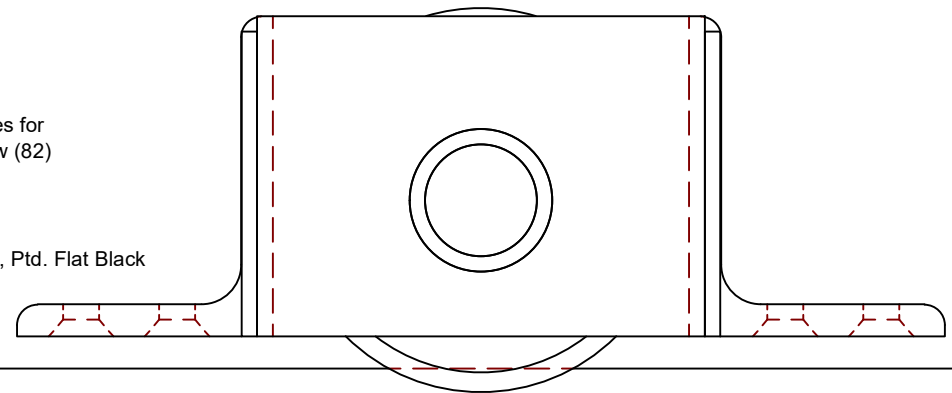
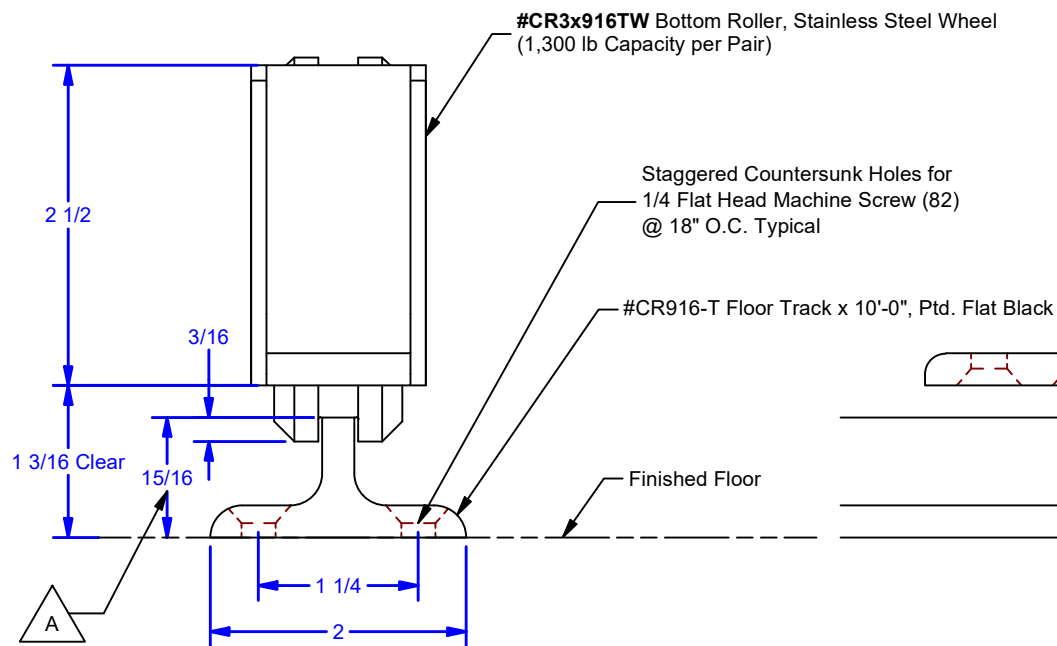
3

2

1



REVISIONS				
ZONE	REV	DESCRIPTION	DATE	BY
	A	Height of Floor Track	6-7-21	BCM



**ALL DIMENSIONS IN INCHES**

THE INFORMATION CONTAINED IN THIS DRAWING IS THE SOLE PROPERTY OF CROWN INDUSTRIAL. ANY REPRODUCTION IN PART OR AS A WHOLE WITHOUT THE WRITTEN PERMISSION OF CROWN INDUSTRIAL IS PROHIBITED.	ID #:	0002643	STOCK PART #:	CR3x916TW
	MATERIAL:			
DESCRIPTION: Bottom Roller & Floor Track				
FINISH:			# PCS:	REV: A



**CROWN INDUSTRIAL**  
 So. San Francisco, Ca  
 (650) 952-5150  
[www.crown-industrial.com](http://www.crown-industrial.com)

DWG #: 0001676  
 DRAWN:BCM 3/7/2018  
 SHEET #6  
 File: 0001676.idw