

***Included Hardware:**
 (2 pair) Emitter / Receiver safety beam/photo eyes
 (2 ea.) Mounting Plates
 (8 ea.) #6 x 1" Flat Head Phillips Sheet Metal Screws, 18-8 S.S.
 (1 ea.) Self-monitored controller.

For residential applications:
 Mount 1 pair of photo eyes at 6" above finished floor &
 second pair at 24" above finished floor.

ALL DIMENSIONS IN INCHES

THE INFORMATION CONTAINED IN THIS DRAWING IS THE SOLE PROPERTY OF CROWN INDUSTRIAL. ANY REPRODUCTION IN PART OR AS A WHOLE WITHOUT THE WRITTEN PERMISSION OF CROWN INDUSTRIAL IS PROHIBITED.	ID #:	90000001	STOCK PART #:	PE-10MC
	MATERIAL:	Stainless Steel		
DESCRIPTION: Mini Photo Eye Package, 30; Max Wide Opening				
FINISH:	#4 Fin	# PCS:	REV:	



CROWN INDUSTRIAL

So. San Francisco, Ca
 (650) 952-5150

www.crown-industrial.com

4

3

2

1

D

D

C

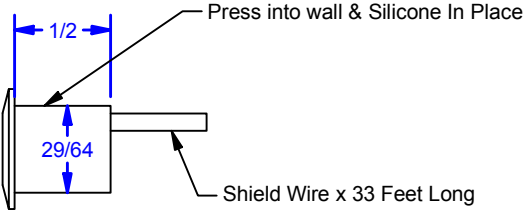
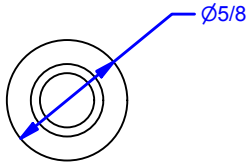
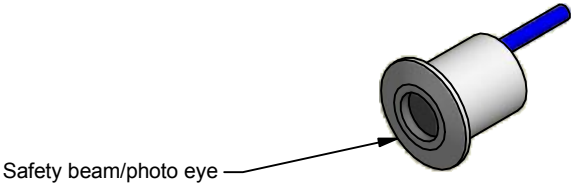
C

B

B

A

A



*Included Hardware:
 (2 pair) Emitter / Receiver safety beam/photo eyes
 (1 ea.) Self-monitored controller.

For residential applications:
 Mount 1 pair of photo eyes at 6" above finished floor &
 second pair at 24" above finished floor.

ALL DIMENSIONS IN INCHES

THE INFORMATION CONTAINED IN THIS DRAWING IS THE SOLE PROPERTY OF CROWN INDUSTRIAL. ANY REPRODUCTION IN PART OR AS A WHOLE WITHOUT THE WRITTEN PERMISSION OF CROWN INDUSTRIAL IS PROHIBITED.	ID #: 90000001	STOCK PART #: PE-10MC
	MATERIAL: Stainless Steel	
DESCRIPTION: Mini Photo Eye Package, 30; Max Wide Opening		
FINISH: #4 Fin	# PCS:	REV:

CROWN INDUSTRIAL
 So. San Francisco, Ca
 (650) 952-5150
 www.crown-industrial.com

4

3

2

1