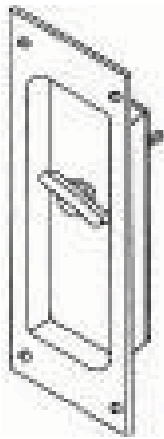


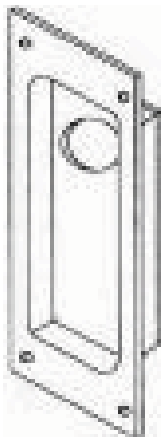


S2002 Solid Brass Pulls

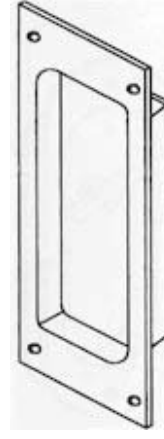
STYLES:



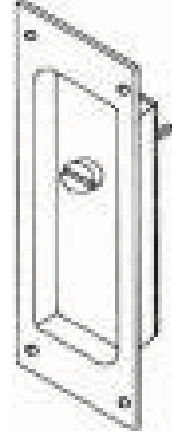
S2002T
Thumb Turn



S2002C
Cylinder



S2002B
Blank



S2002E
Emergency
Egress

Function:

- Solid brass pulls designed to be used with
 - » #2000 Pocket Door Pulls
 - » #2001 Mortise Deadbolt locks
 - » #2002 Pocket Door Lock and pulls
- For doors 1-3/8" or thicker. Specify door thickness upon ordering.

Finish: Stock available in US26D



4

3

2

1

D

D

C

C

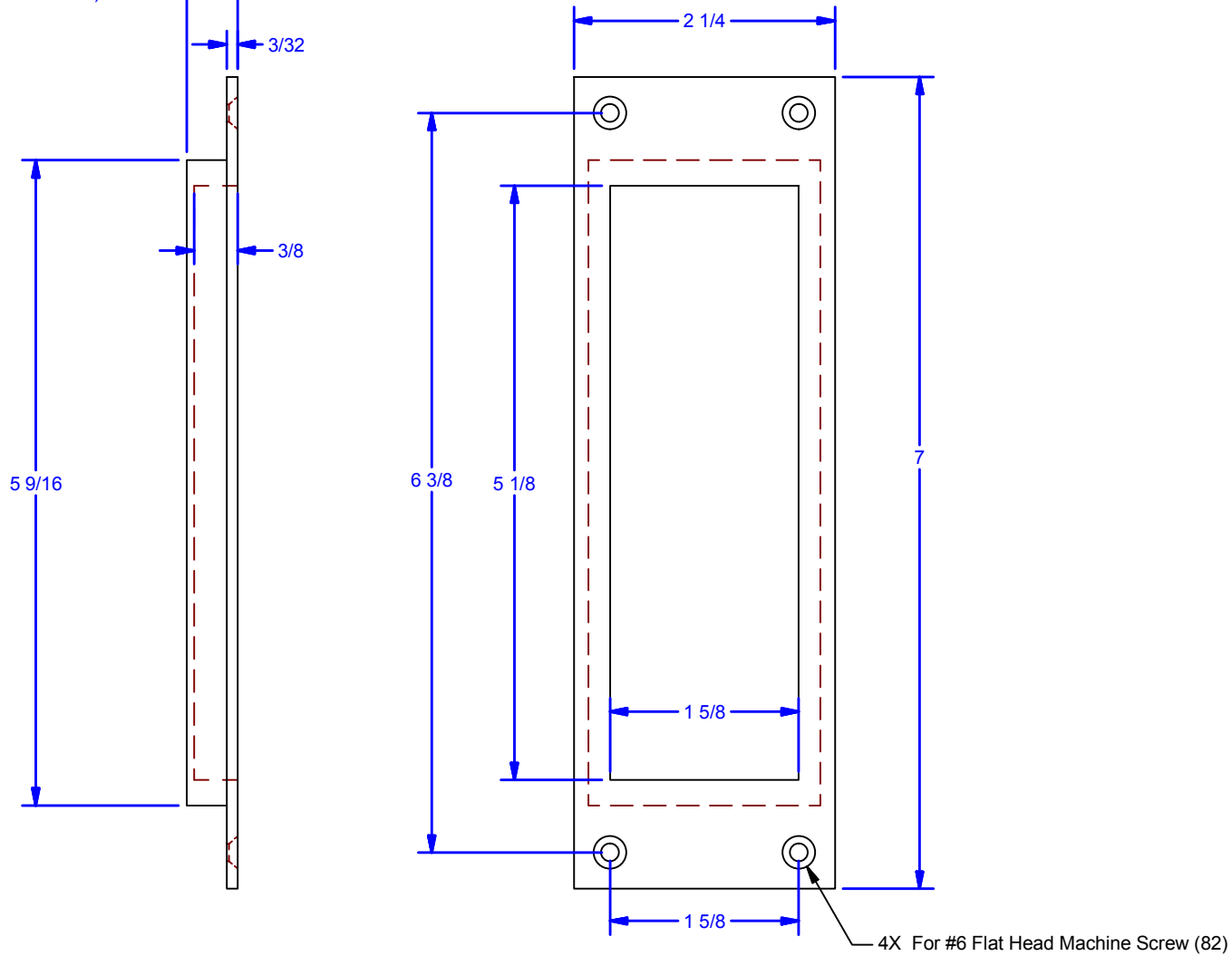
B

B

A

A

7/16 for Doors 1-3/4" Min. Thick
(Spl. 11/32" for Doors 1-3/8" thick)



SPECIFY DOOR THICKNESS

ALL DIMENSIONS IN INCHES

THE INFORMATION CONTAINED IN THIS DRAWING IS THE SOLE PROPERTY OF CROWN INDUSTRIAL. ANY REPRODUCTION IN PART OR AS A WHOLE WITHOUT THE WRITTEN PERMISSION OF CROWN INDUSTRIAL IS PROHIBITED.	ID #:	0000578	STOCK PART #:	S2002B
	MATERIAL:	Brass, Soft Yellow		
DESCRIPTION: 2000 Flush Pull Blank Trim				
FINISH:	Specify	# PCS:	1	REV:



CROWN INDUSTRIAL

So. San Francisco, Ca
(650) 952-5150

www.crown-industrial.com

DWG #: 2001
DRAWN:BCM 6/5/2009
SHEET #4

File: 0000417.idw

4

3

2

1

