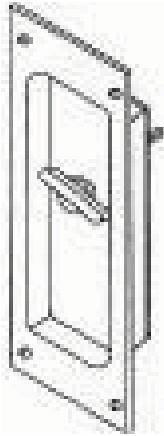


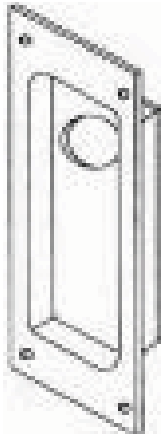


## S2002 Solid Brass Pulls

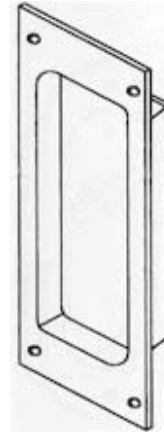
### STYLES:



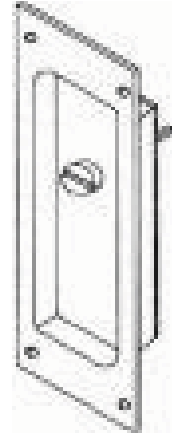
S2002T  
Thumb Turn



S2002C  
Cylinder



S2002B  
Blank



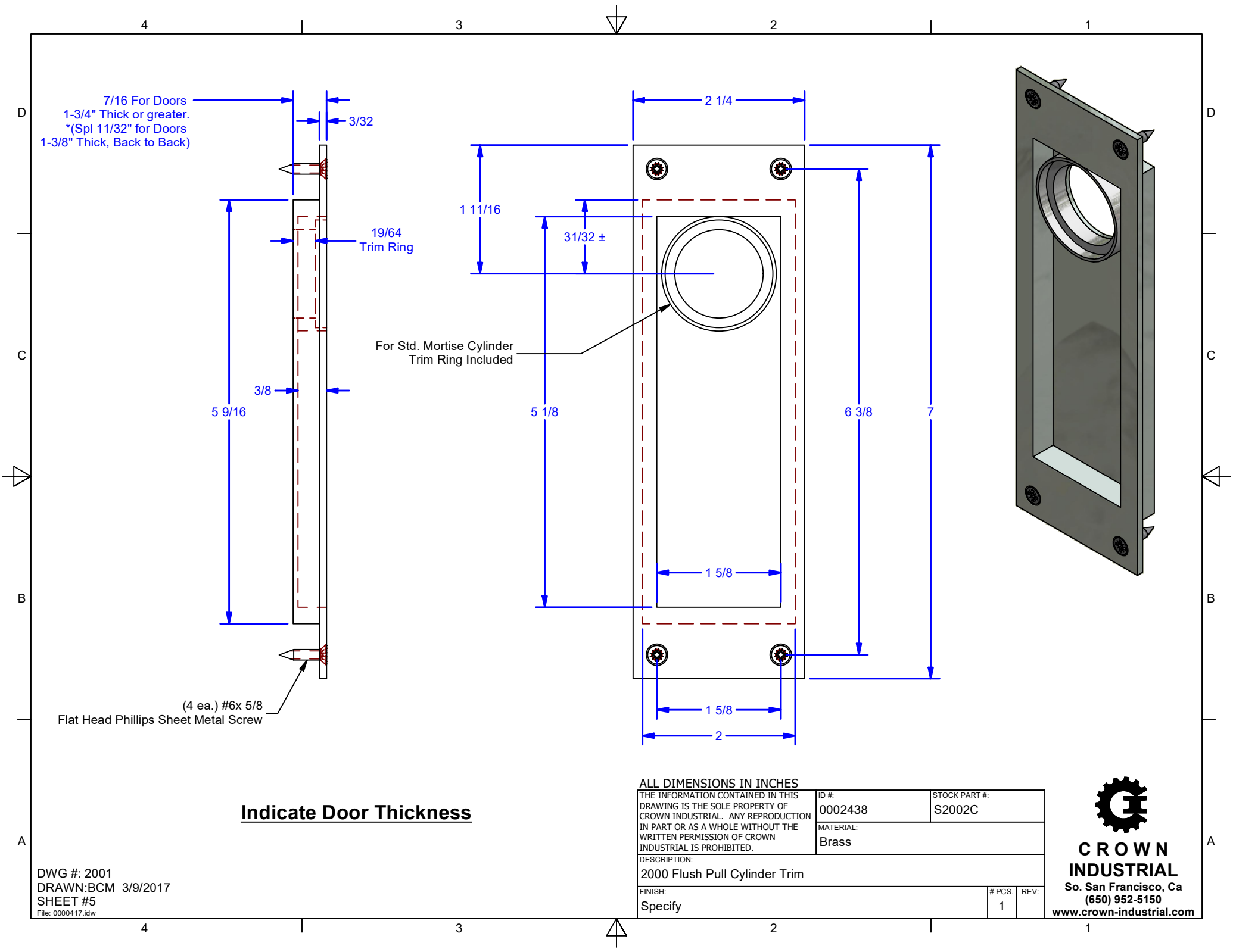
S2002E  
Emergency  
Egress

### Function:

- Solid brass pulls designed to be used with
  - » #2000 Pocket Door Pulls
  - » #2001 Mortise Deadbolt locks
  - » #2002 Pocket Door Lock and pulls
- For doors 1-3/8" or thicker. Specify door thickness upon ordering.

**Finish:** Stock available in US26D





7/16 For Doors  
1-3/4" Thick or greater.  
\*(Spl 11/32" for Doors  
1-3/8" Thick, Back to Back)

19/64  
Trim Ring

For Std. Mortise Cylinder  
Trim Ring Included

(4 ea.) #6x 5/8  
Flat Head Phillips Sheet Metal Screw

**Indicate Door Thickness**

**ALL DIMENSIONS IN INCHES**

THE INFORMATION CONTAINED IN THIS DRAWING IS THE SOLE PROPERTY OF CROWN INDUSTRIAL. ANY REPRODUCTION IN PART OR AS A WHOLE WITHOUT THE WRITTEN PERMISSION OF CROWN INDUSTRIAL IS PROHIBITED.

ID #: 0002438  
MATERIAL: Brass

STOCK PART #: S2002C

DESCRIPTION:  
2000 Flush Pull Cylinder Trim

FINISH: Specify

|        |   |
|--------|---|
| # PCS: | 1 |
| REV:   |   |



**CROWN INDUSTRIAL**  
So. San Francisco, Ca  
(650) 952-5150  
www.crown-industrial.com

DWG #: 2001  
DRAWN:BCM 3/9/2017  
SHEET #5  
File: 000417.idw