

4

3

2

1

D

D

C

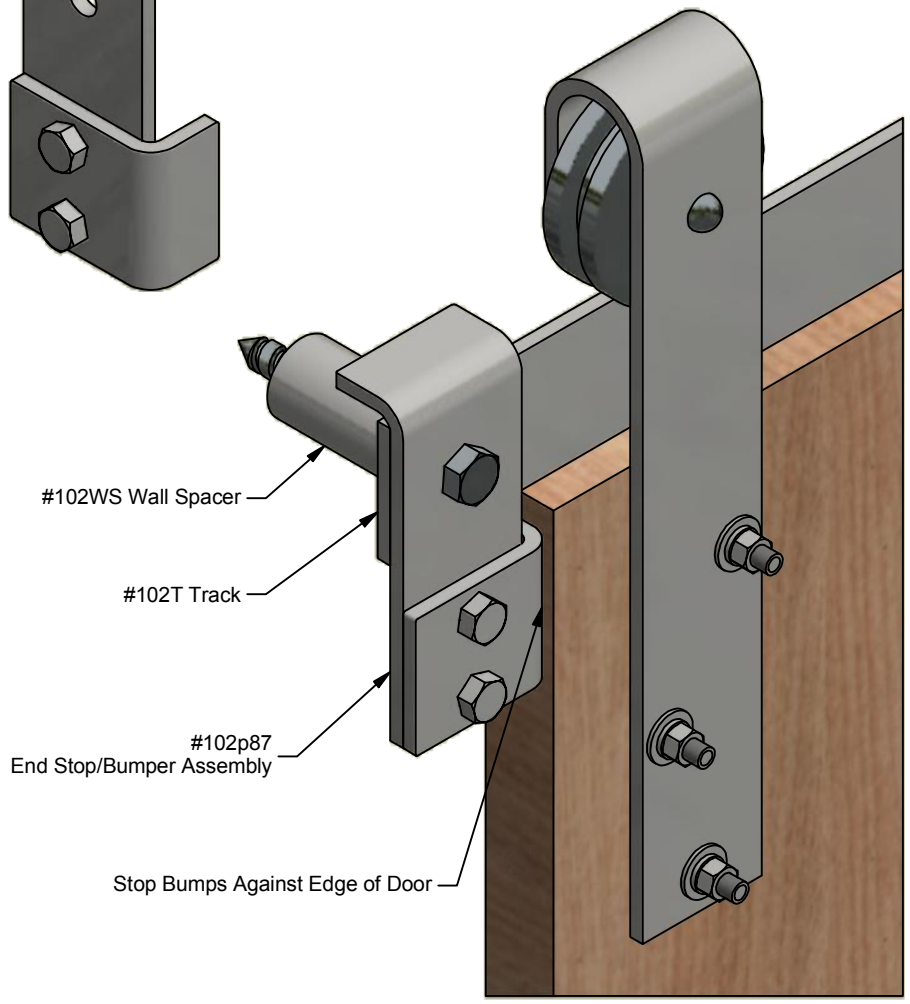
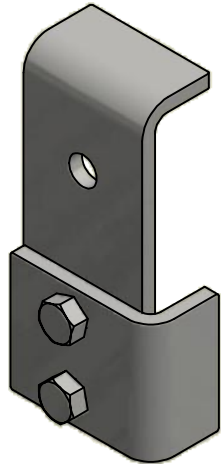
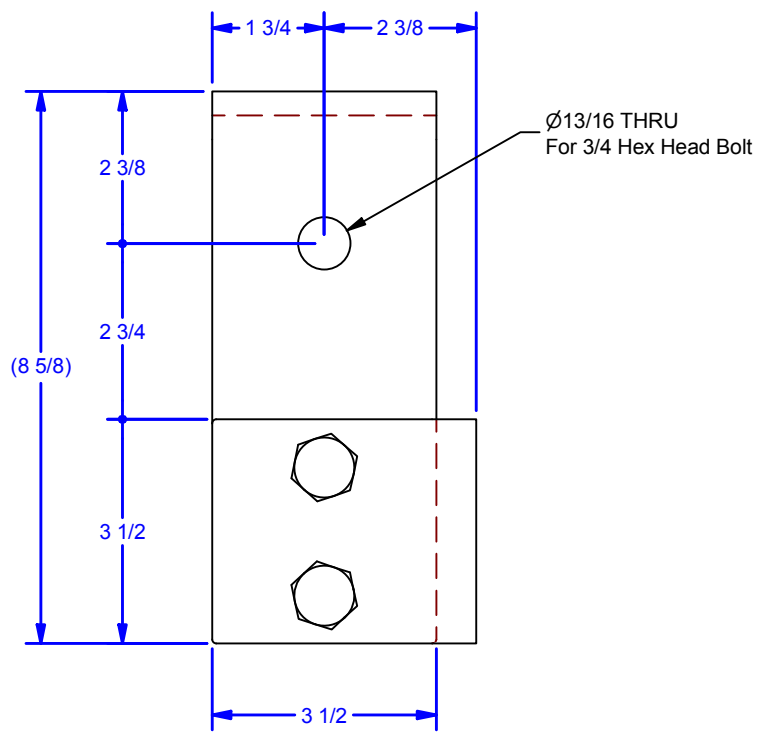
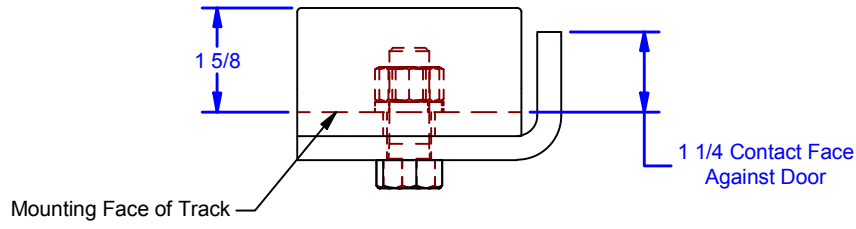
C

B

B

A

A



- Available Finishes:**
- 0102.00087-B-BZ:** Flat Black Painted with Black Zinc Fasteners
 - 0102.00087-B:** Flat Black Painted with Clear Zinc Fasteners
 - 0102.00087-G:** Hot Dipped Galvanized with Clear Zinc Fasteners
 - 0102.00087-C:** Grounded Steel with Clear Coat Painted w. Clear Zinc Fasteners
 - 0102.00087-S:** 304 Stainless Steel #4 Brushed Finish w. Stainless Steel Fasteners

DWG #: 0001544
 DRAWN:BCM 12/1/2006
 SHEET #15
 File: 0001544.idw

ALL DIMENSIONS IN INCHES

THE INFORMATION CONTAINED IN THIS DRAWING IS THE SOLE PROPERTY OF CROWN INDUSTRIAL. ANY REPRODUCTION IN PART OR AS A WHOLE WITHOUT THE WRITTEN PERMISSION OF CROWN INDUSTRIAL IS PROHIBITED.	ID #:	0000155-02	STOCK PART #:	0102.00087-RH
	MATERIAL:			
DESCRIPTION: 102 Door Stop Assembly, Right Hand				
FINISH:		# PCS:	REV:	



CROWN INDUSTRIAL
 So. San Francisco, Ca
 (650) 952-5150
 www.crown-industrial.com

4

3

2

1

