

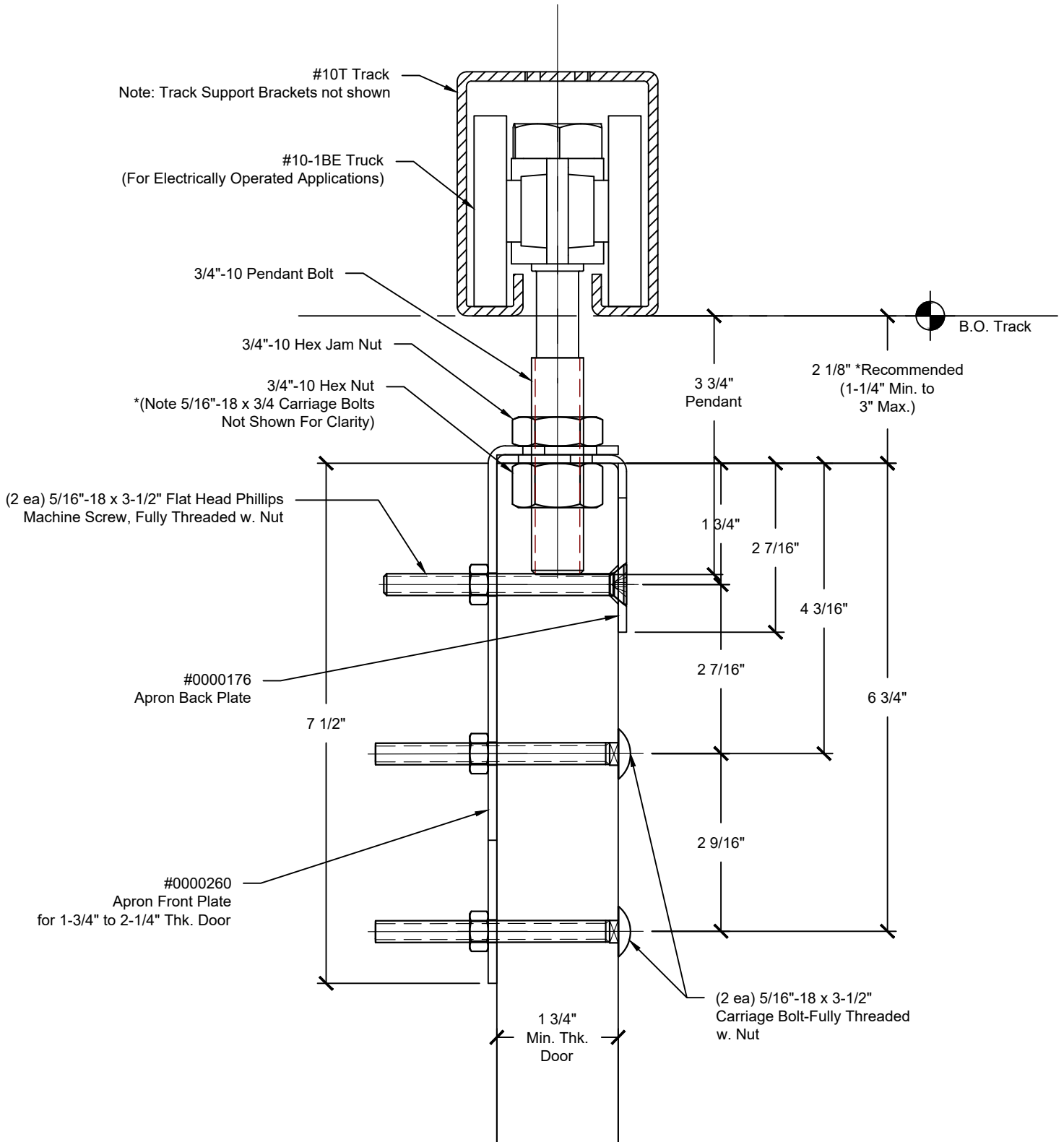
REVISIONS			
REV.	DESCRIPTION	DATE	APPROVED

1 Exterior Elevation Detail of Hanger Assembly

DWG #10
 DESCRIP: #10 BOX TRACK HARDWARE
 DRAWN:BCM 12-31-24 REV:----
 SCALE: 6" = 1'-0"
 SHEET # 10H-Elev
 FILE:d:\vault\workspace\designs\hardware\box track\#10\10

THE INFORMATION CONTAINED IN THIS DRAWING IS THE SOLE PROPERTY OF CROWN INDUSTRIAL. ANY REPRODUCTION IN PART OR AS A WHOLE WITHOUT WRITTEN PERMISSION OF CROWN INDUSTRIAL IS PROHIBITED.

REVISIONS			
REV.	DESCRIPTION	DATE	APPROVED



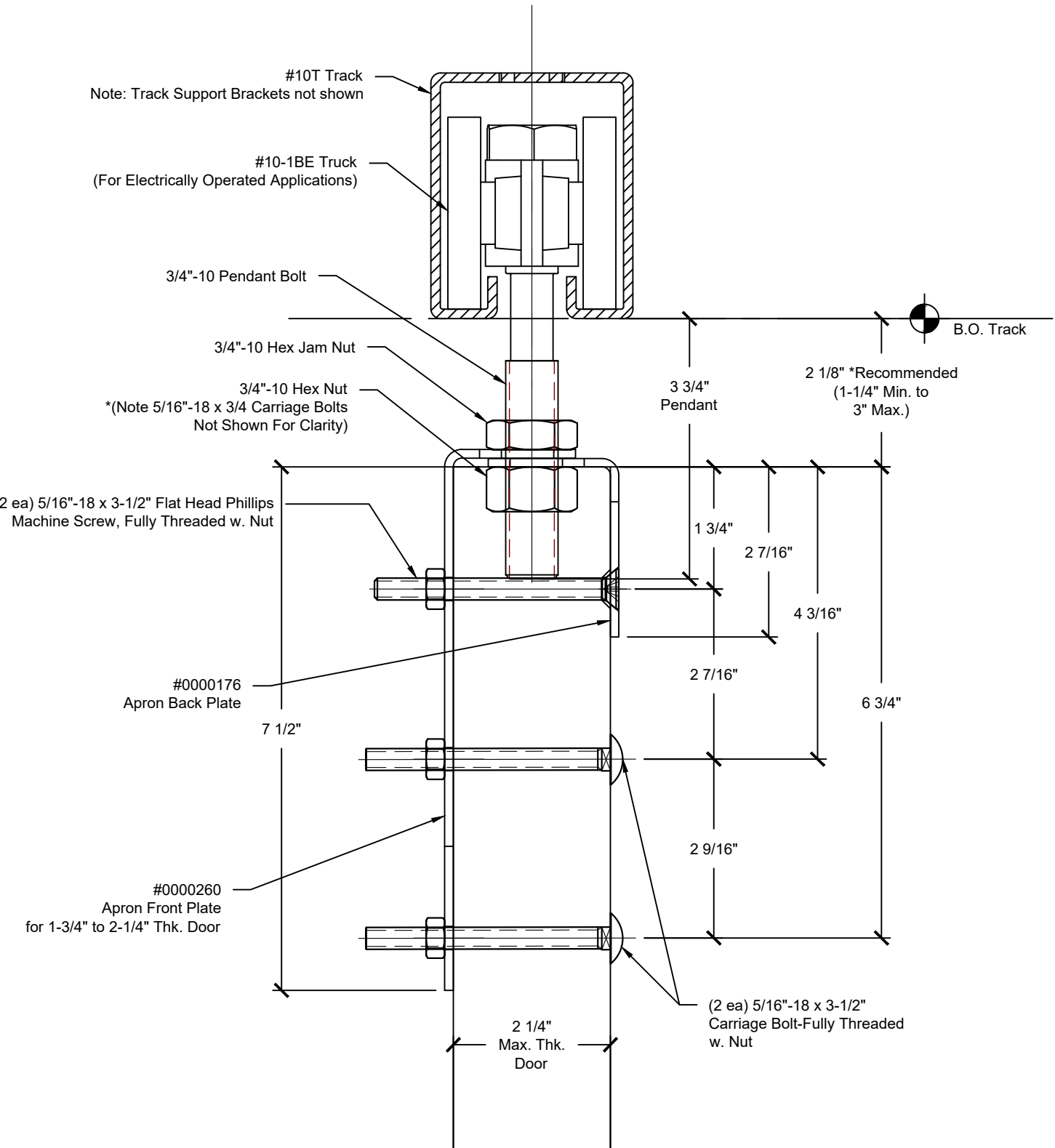
2A1

Head Section at Hanger Assembly

(1-3/4" to 2-1/4" Thick Door)



REVISIONS			
REV.	DESCRIPTION	DATE	APPROVED



2A2

Head Section at Hanger Assembly

(1-3/4" to 2-1/4" Thick Door)

DWG #10
DESCRIP: #10 BOX TRACK HARDWARE
DRAWN:BCM 12-31-24 REV:-----
SCALE: 6" = 1'-0"
SHEET # 10H1.2

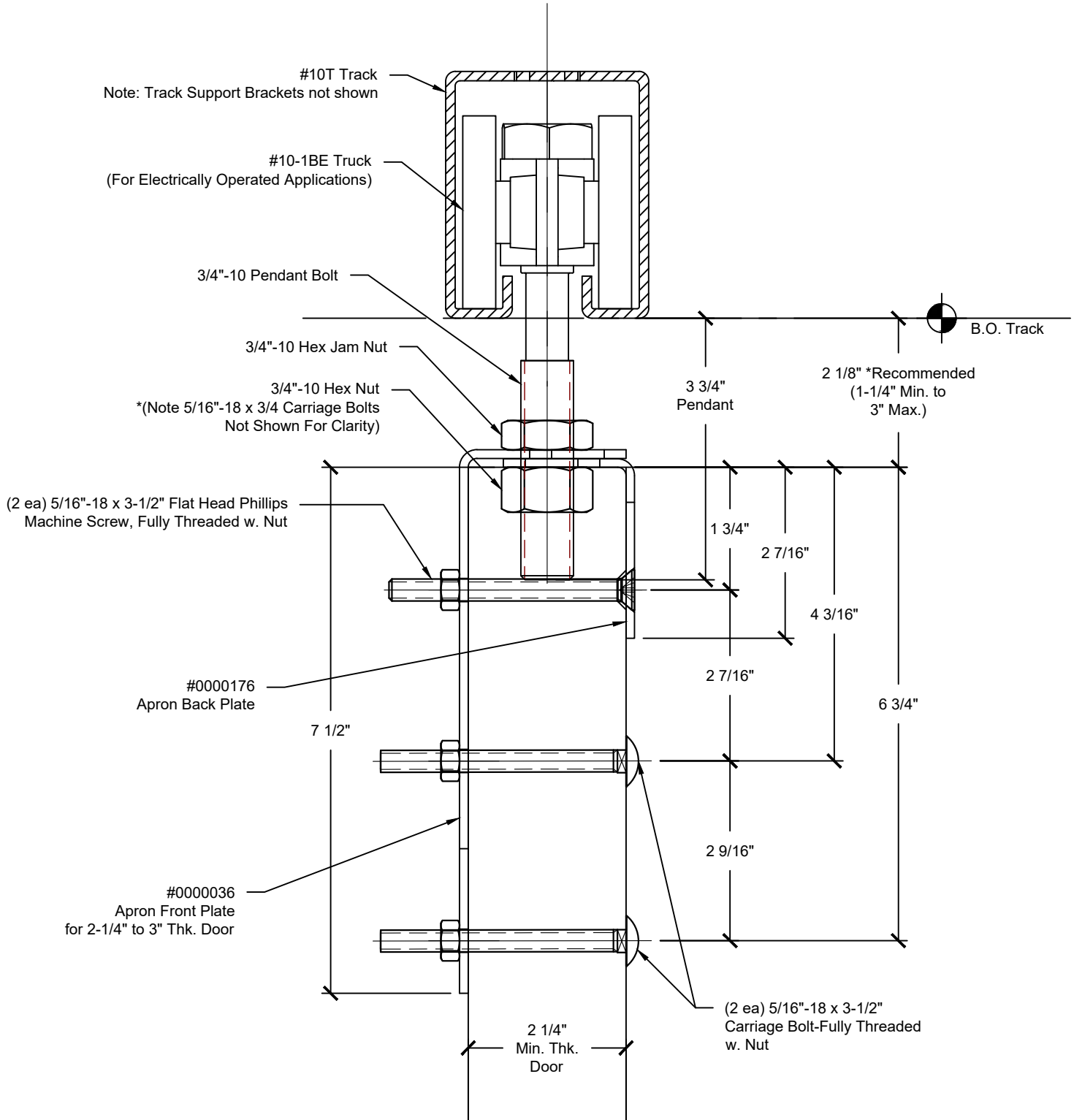
FILE:d:\vault\workspace\designs\hardware\box track\#10\10

THE INFORMATION CONTAINED IN THIS DRAWING IS THE SOLE PROPERTY OF CROWN INDUSTRIAL. ANY REPRODUCTION IN PART OR AS A WHOLE WITHOUT WRITTEN PERMISSION OF CROWN INDUSTRIAL IS PROHIBITED.



CROWN INDUSTRIAL
So. San Francisco, Ca
(650) 952-5150
www.crown-industrial.com

REVISIONS			
REV.	DESCRIPTION	DATE	APPROVED



2B1

Head Section at Hanger Assembly

(2-1/4" to 3" Thick Door)

DWG #10
DESCRIP: #10 BOX TRACK HARDWARE
DRAWN:BCM 12-31-24 REV:-----
SCALE: 6" = 1'-0"
SHEET # 10H2.1

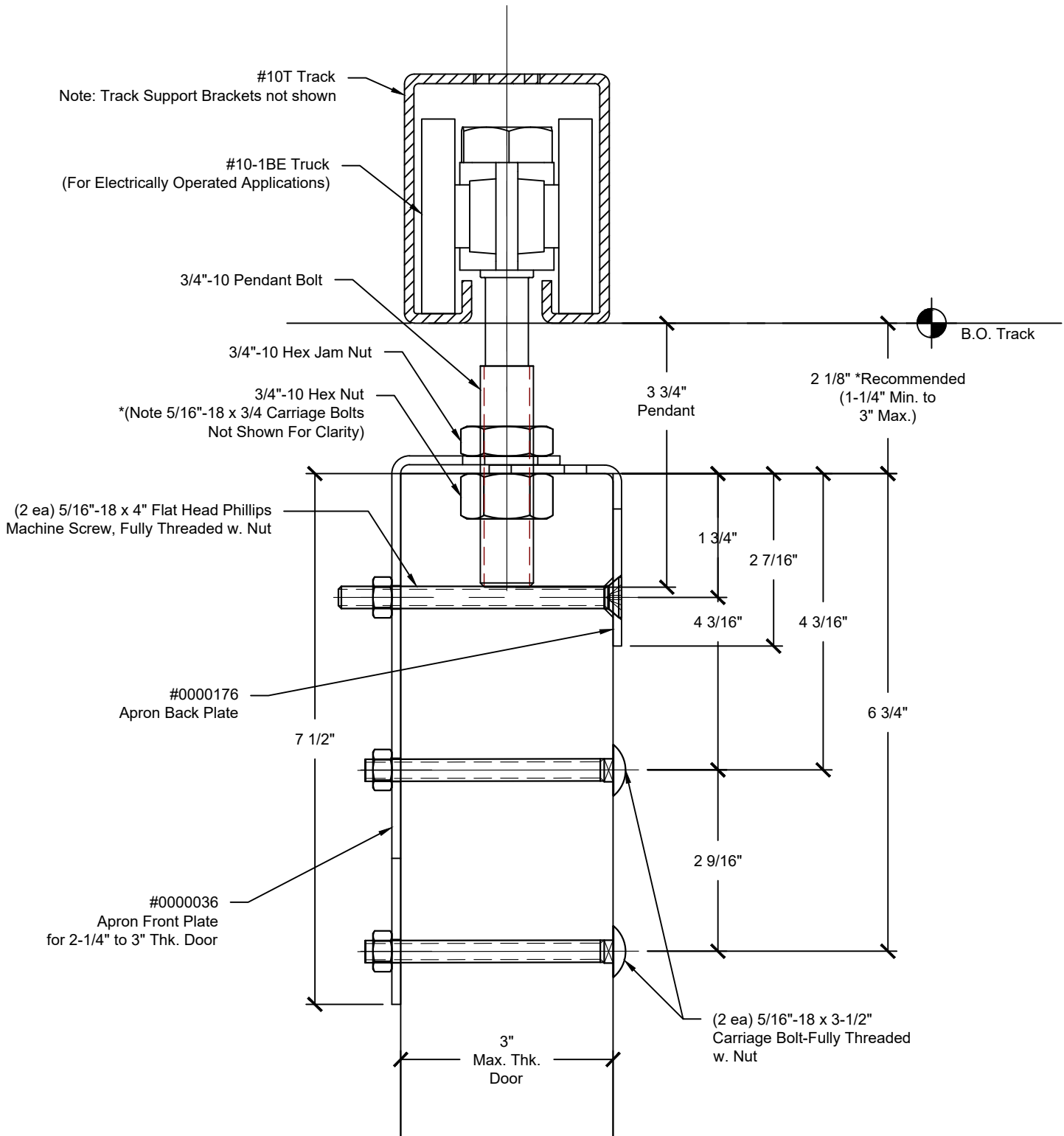
FILE:d:\vault\workspace\designs\hardware\box track\#10\10

THE INFORMATION CONTAINED IN THIS DRAWING IS THE SOLE PROPERTY OF CROWN INDUSTRIAL. ANY REPRODUCTION IN PART OR AS A WHOLE WITHOUT WRITTEN PERMISSION OF CROWN INDUSTRIAL IS PROHIBITED.



CROWN INDUSTRIAL
So. San Francisco, Ca
(650) 952-5150
www.crown-industrial.com

REVISIONS			
REV.	DESCRIPTION	DATE	APPROVED



2B2

Head Section at Hanger Assembly

(2-1/4" to 3" Thick Door)

DWG #10
 DESCRIP: #10 BOX TRACK HARDWARE
 DRAWN:BCM 12-31-24 REV:-----
 SCALE: 6" = 1'-0"
 SHEET # 10H2.2

FILE:d:\vault\workspace\designs\hardware\box track\#10\10

THE INFORMATION CONTAINED IN THIS
 DRAWING IS THE SOLE PROPERTY OF CROWN
 INDUSTRIAL. ANY REPRODUCTION IN PART OR
 AS A WHOLE WITHOUT WRITTEN PERMISSION
 OF CROWN INDUSTRIAL IS PROHIBITED.



**CROWN
 INDUSTRIAL**
 So. San Francisco, Ca
 (650) 952-5150
 www.crown-industrial.com