

4

3

2

1

D

D

C

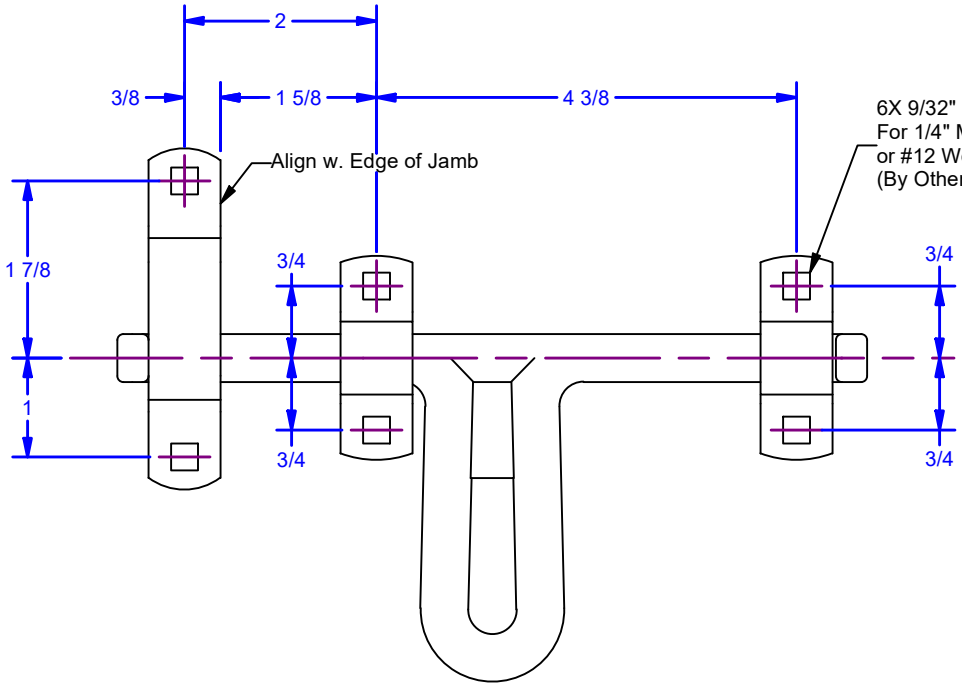
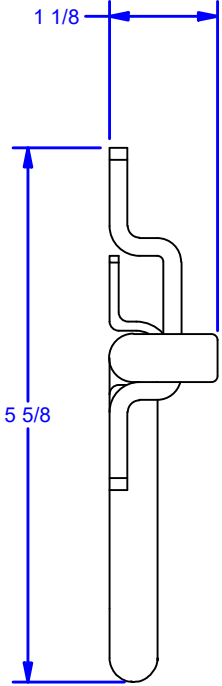
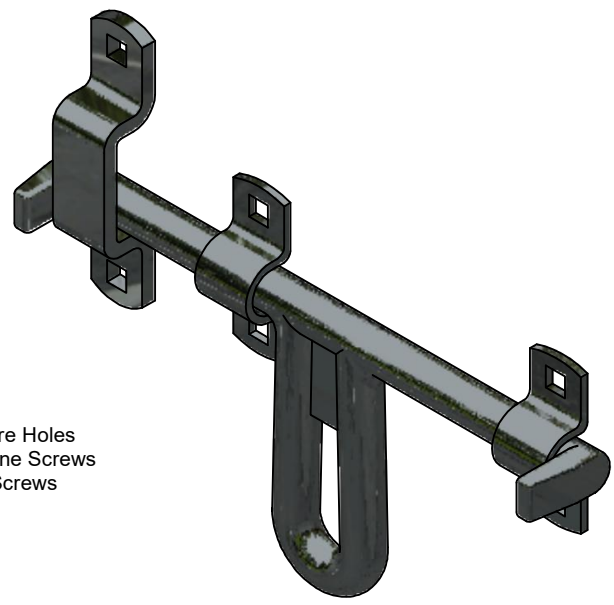
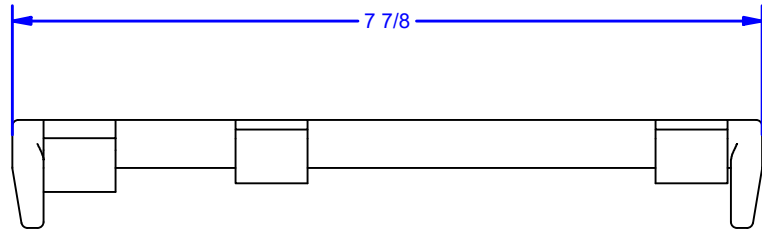
C

B

B

A

A



6X 9/32" Square Holes
For 1/4" Machine Screws
or #12 Wood Screws
(By Others)

**NON TEMPLATE DRAWING,
USE FOR REFERENCE ONLY**

Available Finishes:
0128.00010: Powder Coat Pebble Tan
0128.00010SC: Powder Coat Black
0128.00012: Clear Zinc Plated

ALL DIMENSIONS IN INCHES

THE INFORMATION CONTAINED IN THIS DRAWING IS THE SOLE PROPERTY OF CROWN INDUSTRIAL. ANY REPRODUCTION IN PART OR AS A WHOLE WITHOUT THE WRITTEN PERMISSION OF CROWN INDUSTRIAL IS PROHIBITED.	ID #:	STOCK PART #:
	0000832	0128.00010 / 0128.00012
DESCRIPTION:		MATERIAL:
Medium Latch Horse Follower Assy No Accessories Shown		
FINISH:	# PCS:	REV:



CROWN INDUSTRIAL
So. San Francisco, Ca
(650) 952-5150
www.crown-industrial.com

DWG #: 128P10
DRAWN: BCM 7/16/2010
SHEET #1
File: 0000832.idw

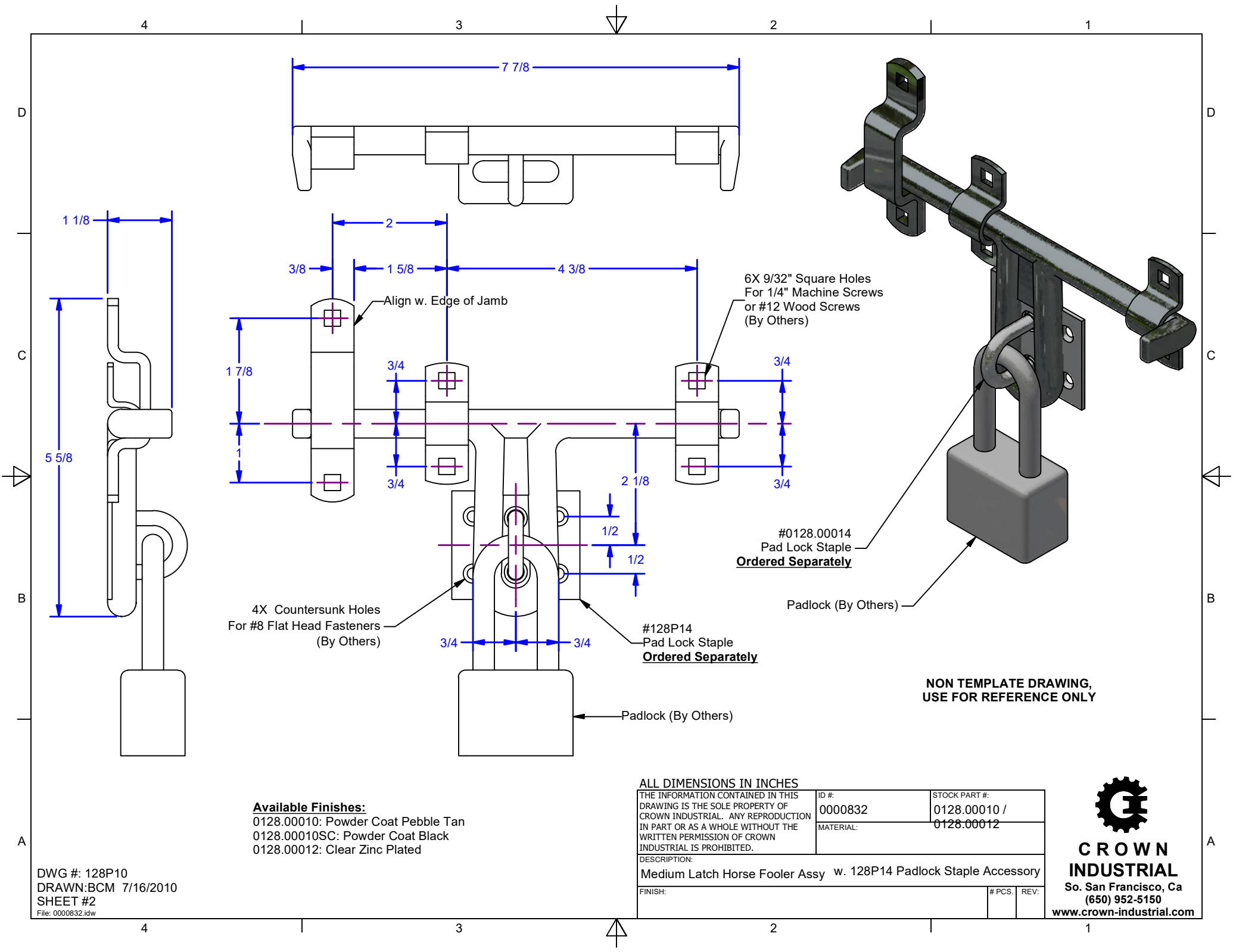
4

3

2

1





7 7/8

1 1/8

5 5/8

1 7/8

1

3/8

2

1 5/8

4 3/8

Align w. Edge of Jamb

3/4

3/4

3/4

3/4

2 1/8

1/2

1/2

3/4

3/4

3/4

3/4

6X 9/32" Square Holes
For 1/4" Machine Screws
or #12 Wood Screws
(By Others)

4X Countersunk Holes
For #8 Flat Head Fasteners
(By Others)

#128P14
Pad Lock Staple
Ordered Separately

#0128.00014
Pad Lock Staple
Ordered Separately

Padlock (By Others)

Padlock (By Others)

**NON TEMPLATE DRAWING,
USE FOR REFERENCE ONLY**

Available Finishes:
 0128.00010: Powder Coat Pebble Tan
 0128.00010SC: Powder Coat Black
 0128.00012: Clear Zinc Plated

ALL DIMENSIONS IN INCHES

THE INFORMATION CONTAINED IN THIS DRAWING IS THE SOLE PROPERTY OF CROWN INDUSTRIAL. ANY REPRODUCTION IN PART OR AS A WHOLE WITHOUT THE WRITTEN PERMISSION OF CROWN INDUSTRIAL IS PROHIBITED.	ID #: 0000832	STOCK PART #: 0128.00010 / 0128.00012
DESCRIPTION: Medium Latch Horse Follower Assy w. 128P14 Padlock Staple Accessory	MATERIAL:	
FINISH:	# PCS:	REV:



CROWN INDUSTRIAL
 So. San Francisco, Ca
 (650) 952-5150
 www.crown-industrial.com

DWG #: 128P10
 DRAWN:BCM 7/16/2010
 SHEET #2
 File: 0000832.idw

4

3

2

1

D

D

C

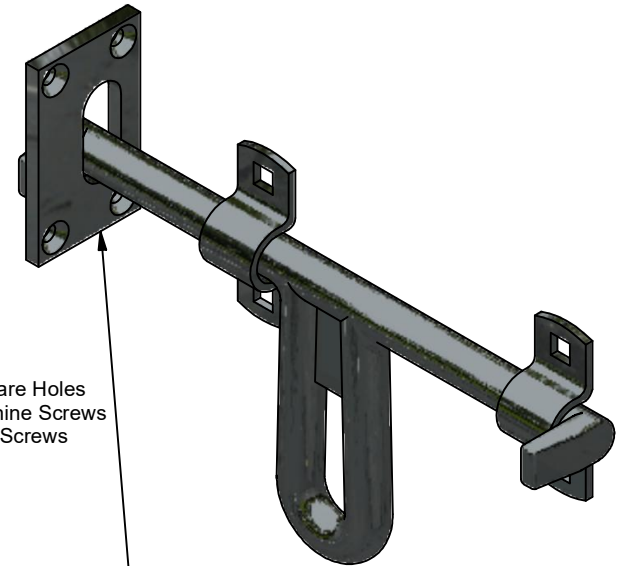
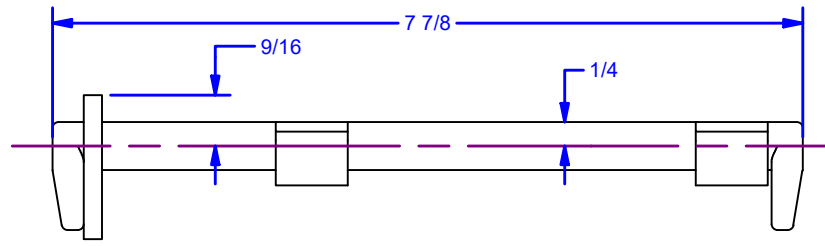
C

B

B

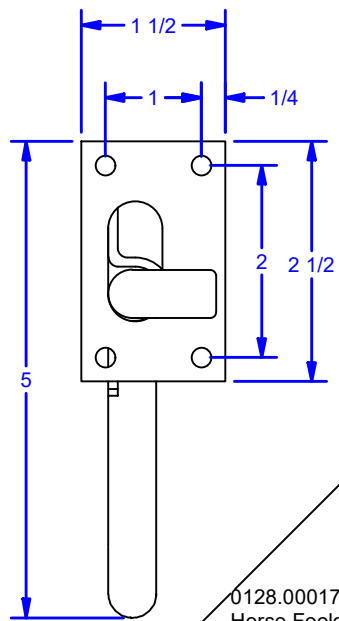
A

A

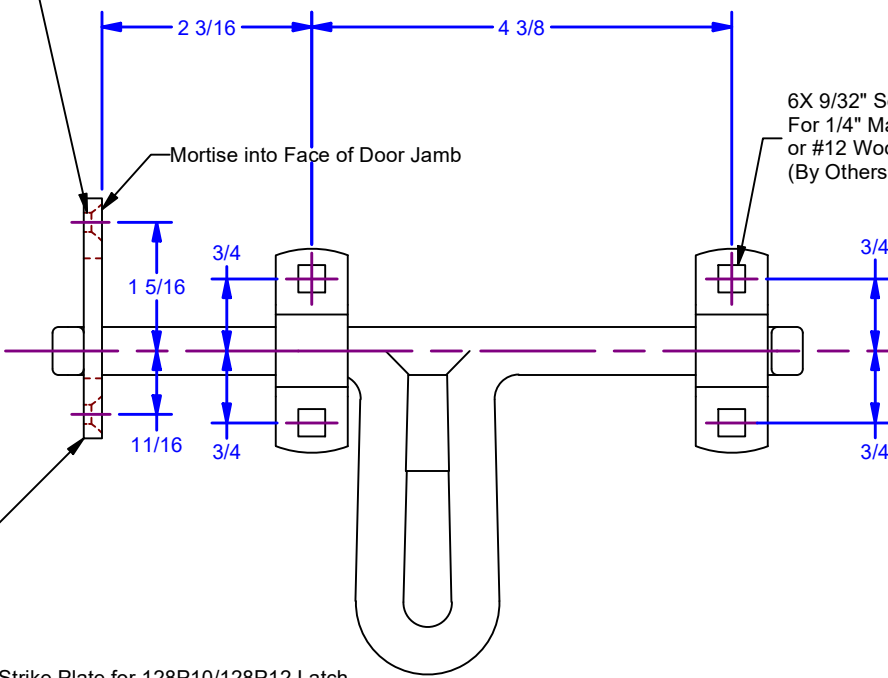


0128.00017
Horse Fooler Strike Plate for 128P10/128P12 Latch
(Ordered Separately)

4X Countersunk Holes
For #10 Flat Head Fasteners (By Others)



0128.00017
Horse Fooler Strike Plate for 128P10/128P12 Latch
(Ordered Separately)



6X 9/32" Square Holes
For 1/4" Machine Screws
or #12 Wood Screws
(By Others)

**NON TEMPLATE DRAWING,
USE FOR REFERENCE ONLY**

DWG #: 128P10
DRAWN:BCM 7/16/2010
SHEET #3
File: 0000832.idw

Available Finishes:
0128.00010: Powder Coat Pebble Tan
0128.00010SC: Powder Coat Black
0128.00012: Clear Zinc Plated

ALL DIMENSIONS IN INCHES

THE INFORMATION CONTAINED IN THIS DRAWING IS THE SOLE PROPERTY OF CROWN INDUSTRIAL. ANY REPRODUCTION IN PART OR AS A WHOLE WITHOUT THE WRITTEN PERMISSION OF CROWN INDUSTRIAL IS PROHIBITED.		ID #: 0000832	STOCK PART #: 0128.00010 / 0128.00012
DESCRIPTION: Medium Latch Horse Fooler Assy w. 128P17 Horse Fooler Strike Plate		MATERIAL:	
FINISH:		# PCS:	REV:



CROWN INDUSTRIAL
So. San Francisco, Ca
(650) 952-5150
www.crown-industrial.com

4

3

2

1



4

3

2

1

D

D

C

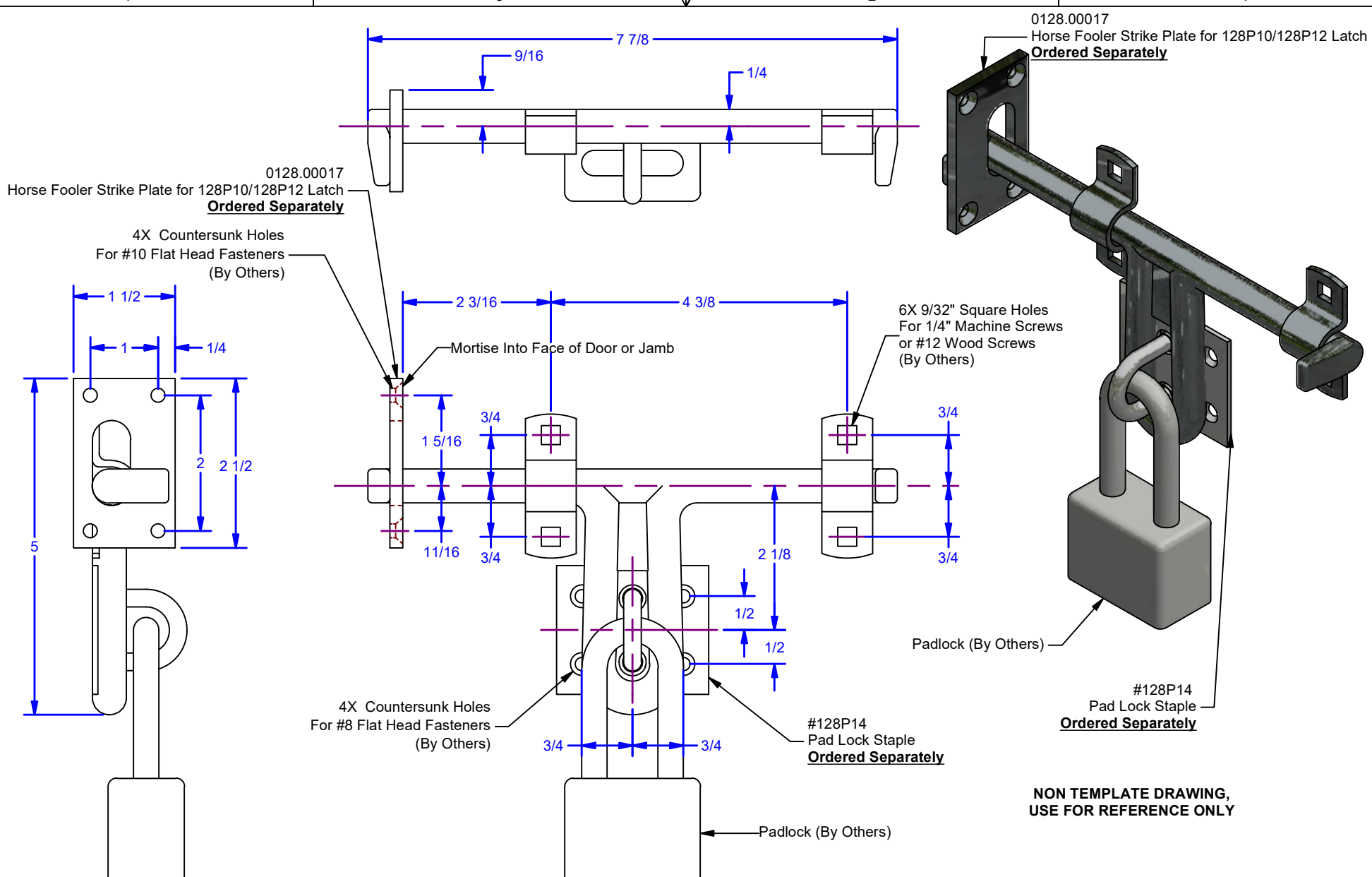
C

B

B

A

A



**NON TEMPLATE DRAWING,
USE FOR REFERENCE ONLY**

Available Finishes:
 0128.00010: Powder Coat Pebble Tan
 0128.00010SC: Powder Coat Black
 0128.00012: Clear Zinc Plated

ALL DIMENSIONS IN INCHES

THE INFORMATION CONTAINED IN THIS DRAWING IS THE SOLE PROPERTY OF CROWN INDUSTRIAL. ANY REPRODUCTION IN PART OR AS A WHOLE WITHOUT THE WRITTEN PERMISSION OF CROWN INDUSTRIAL IS PROHIBITED.	ID #: 0000832	STOCK PART #: 0128.00010 / 0128.00012
DESCRIPTION: Medium Latch Horse Fooler Assy	MATERIAL:	
FINISH:	# PCS:	REV:

CROWN INDUSTRIAL
 So. San Francisco, Ca
 (650) 952-5150
 www.crown-industrial.com

DWG #: 128P10
 DRAWN: BCM 7/16/2010
 SHEET #4
 File: 0000832.idw

4

3

2

1

