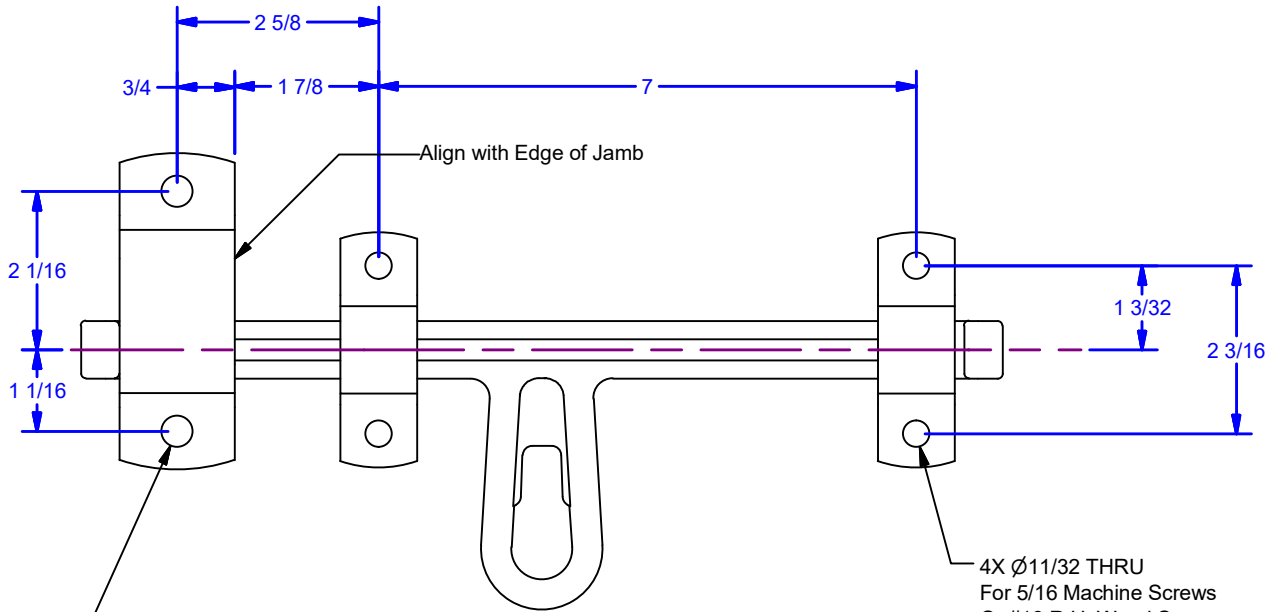
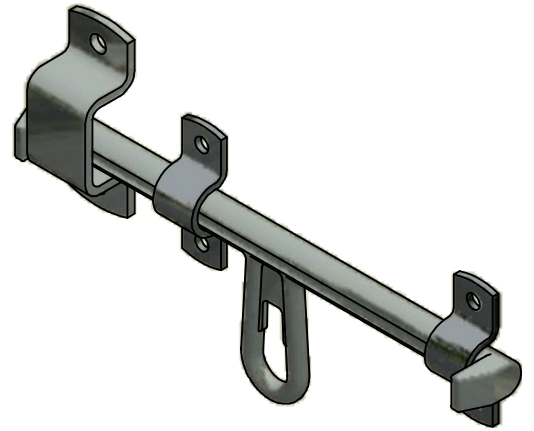


2X  $\varnothing 13/32$  THRU  
For 3/8 Machine Screws  
Or #20 R.H. Wood Screws.  
(Includes 3/8"x 2" Lag Screws, zinc)



Align with Edge of Jamb

4X  $\varnothing 11/32$  THRU  
For 5/16 Machine Screws  
Or #18 R.H. Wood Screws.  
(Includes 5/16" x 1-1/2" Lag Screws, zinc)



**NON TEMPLATE DRAWING,  
USE FOR REFERENCE ONLY**

**Available Finishes:**  
0128.00011: Powder Coat Pebble Tan  
0128.0011SC: Powder Coat Black  
0128.00011ZC: Clear Zinc Plated

**ALL DIMENSIONS IN INCHES**

THE INFORMATION CONTAINED IN THIS DRAWING IS THE SOLE PROPERTY OF CROWN INDUSTRIAL. ANY REPRODUCTION IN PART OR AS A WHOLE WITHOUT THE WRITTEN PERMISSION OF CROWN INDUSTRIAL IS PROHIBITED.	ID #:	0001162	STOCK PART #:	0128.00011
	MATERIAL:			
DESCRIPTION: 182P11 Large Latch Horse Follower				
FINISH:		# PCS:	REV:	



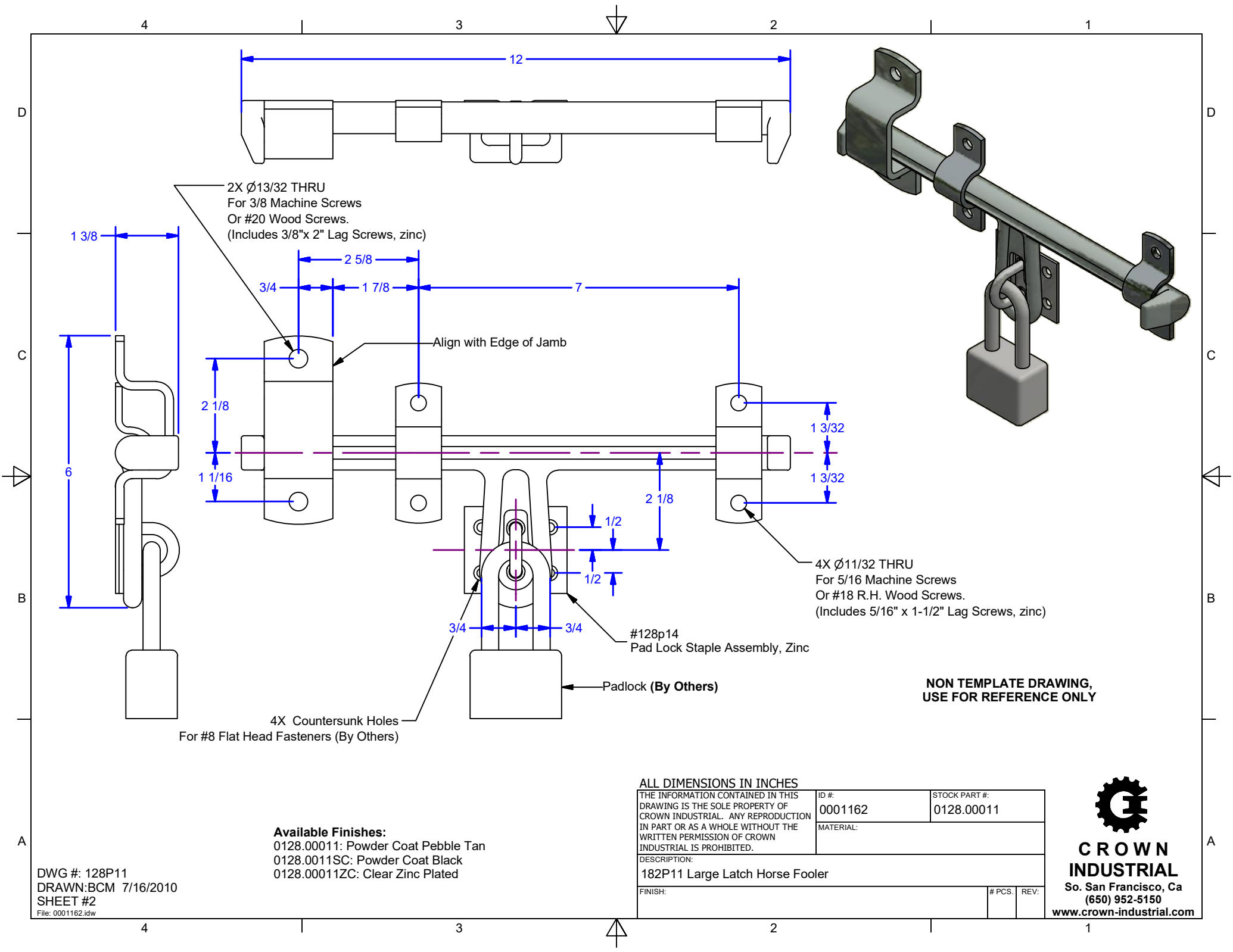
**CROWN  
INDUSTRIAL**

So. San Francisco, Ca  
(650) 952-5150

[www.crown-industrial.com](http://www.crown-industrial.com)

DWG #: 128P11  
DRAWN:BCM 7/16/2010  
SHEET #1

File: 0001162.idw



DWG #: 128P11  
 DRAWN:BCM 7/16/2010  
 SHEET #2  
 File: 0001162.idw

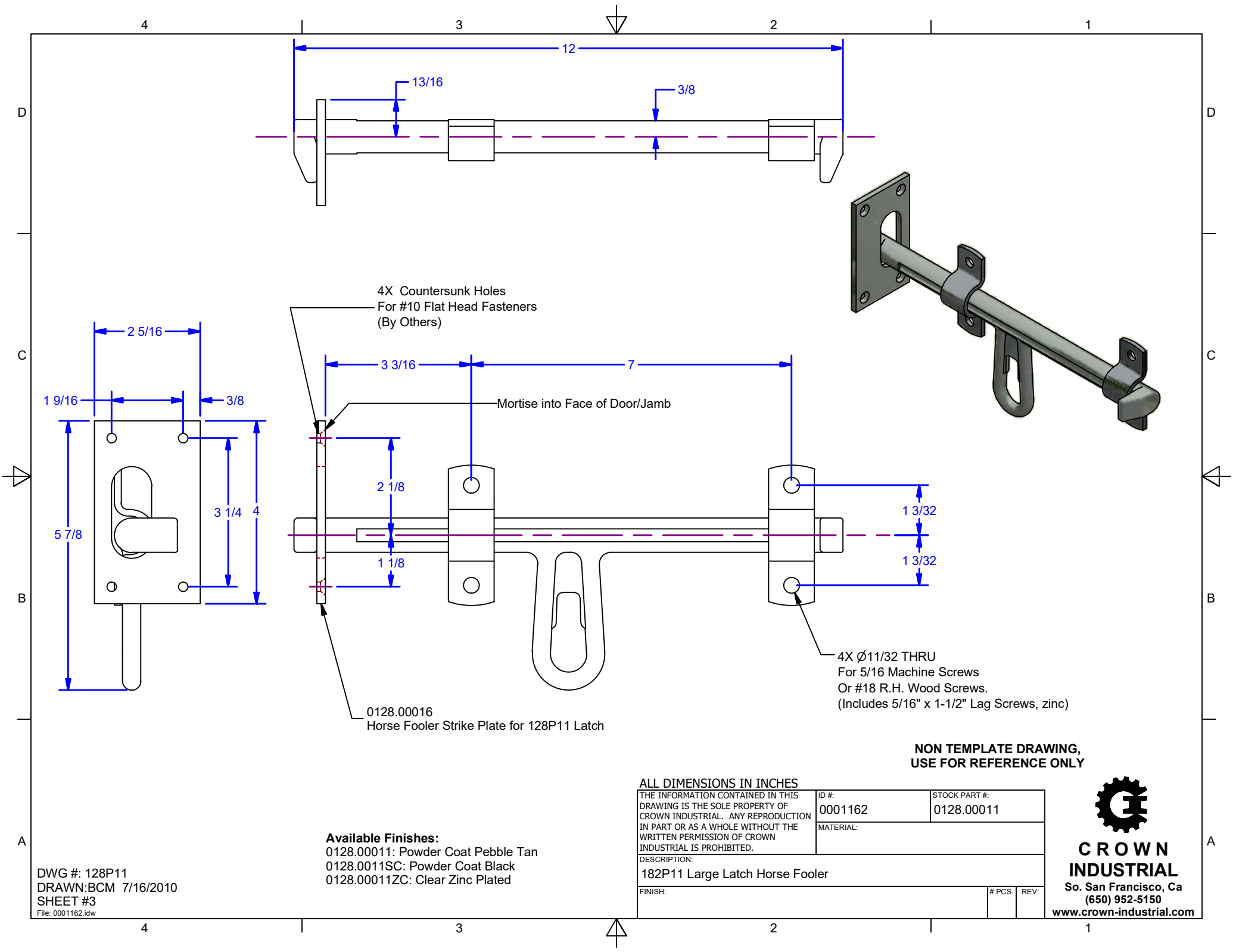
**Available Finishes:**  
 0128.00011: Powder Coat Pebble Tan  
 0128.0011SC: Powder Coat Black  
 0128.00011ZC: Clear Zinc Plated

**ALL DIMENSIONS IN INCHES**

THE INFORMATION CONTAINED IN THIS DRAWING IS THE SOLE PROPERTY OF CROWN INDUSTRIAL. ANY REPRODUCTION IN PART OR AS A WHOLE WITHOUT THE WRITTEN PERMISSION OF CROWN INDUSTRIAL IS PROHIBITED.	ID #:	0001162	STOCK PART #:	0128.00011
	MATERIAL:			
DESCRIPTION: 182P11 Large Latch Horse Footer				
FINISH:		# PCS:		REV:



**CROWN INDUSTRIAL**  
 So. San Francisco, Ca  
 (650) 952-5150  
 www.crown-industrial.com



4X Countersunk Holes  
For #10 Flat Head Fasteners  
(By Others)

Mortise into Face of Door/Jamb

4X Ø11/32 THRU  
For 5/16 Machine Screws  
Or #18 R.H. Wood Screws.  
(Includes 5/16" x 1-1/2" Lag Screws, zinc)

0128.00016  
Horse Follower Strike Plate for 128P11 Latch

**NON TEMPLATE DRAWING,  
USE FOR REFERENCE ONLY**

**ALL DIMENSIONS IN INCHES**

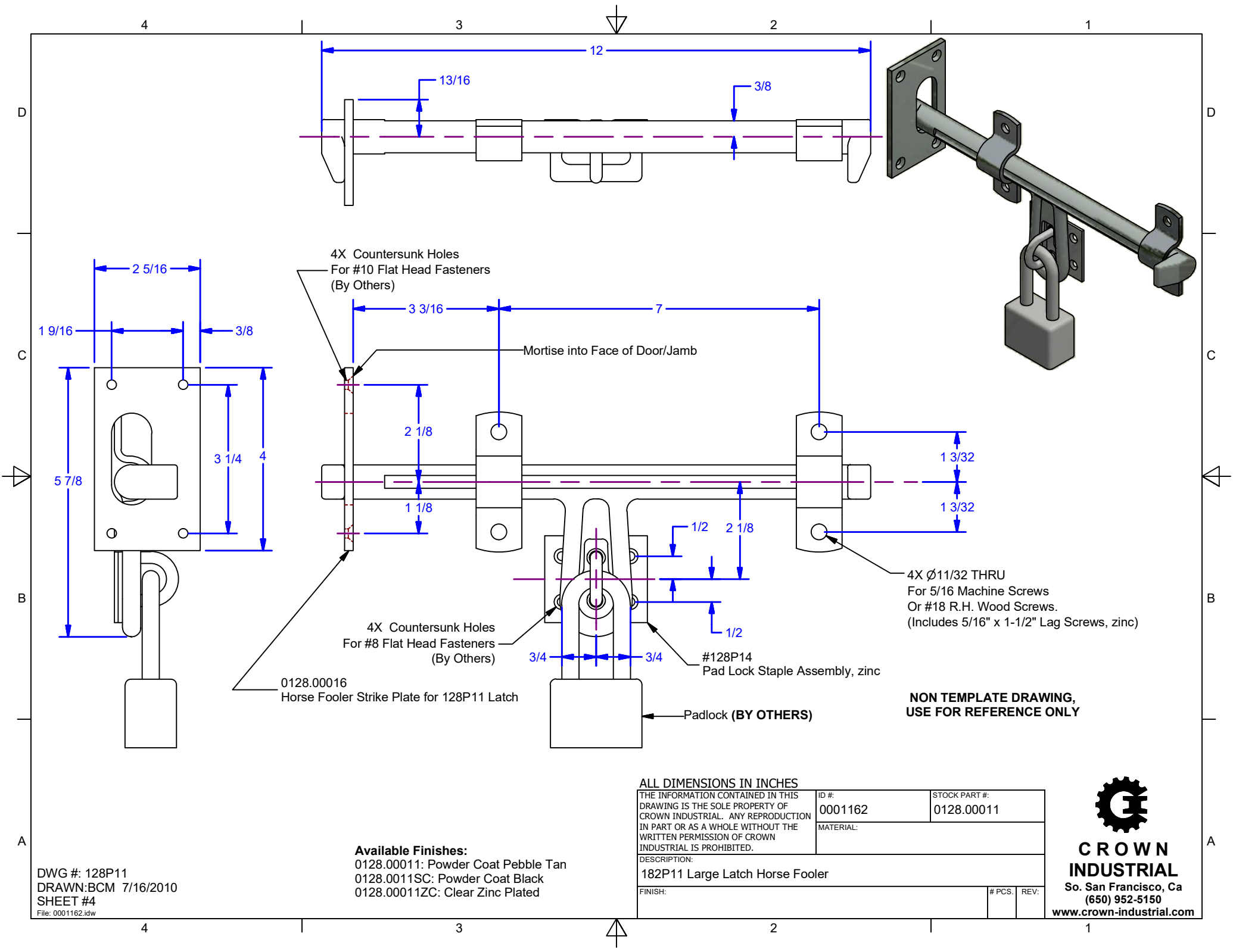
THE INFORMATION CONTAINED IN THIS DRAWING IS THE SOLE PROPERTY OF CROWN INDUSTRIAL. ANY REPRODUCTION IN PART OR AS A WHOLE WITHOUT THE WRITTEN PERMISSION OF CROWN INDUSTRIAL IS PROHIBITED.	ID #:	0001162	STOCK PART #:	0128.00011
	MATERIAL:			
DESCRIPTION: 182P11 Large Latch Horse Follower				
FINISH:			# PCS:	REV:

**Available Finishes:**  
0128.00011: Powder Coat Pebble Tan  
0128.0011SC: Powder Coat Black  
0128.00011ZC: Clear Zinc Plated



**CROWN INDUSTRIAL**  
So. San Francisco, Ca  
(650) 952-5150  
www.crown-industrial.com

DWG #: 128P11  
DRAWN:BCM 7/16/2010  
SHEET #3  
File: 0001162.idw



**NON TEMPLATE DRAWING,  
USE FOR REFERENCE ONLY**

DWG #: 128P11  
DRAWN:BCM 7/16/2010  
SHEET #4  
File: 0001162.idw

**Available Finishes:**  
0128.00011: Powder Coat Pebble Tan  
0128.0011SC: Powder Coat Black  
0128.00011ZC: Clear Zinc Plated

**ALL DIMENSIONS IN INCHES**

THE INFORMATION CONTAINED IN THIS DRAWING IS THE SOLE PROPERTY OF CROWN INDUSTRIAL. ANY REPRODUCTION IN PART OR AS A WHOLE WITHOUT THE WRITTEN PERMISSION OF CROWN INDUSTRIAL IS PROHIBITED.	ID #:	0001162	STOCK PART #:	0128.00011
	MATERIAL:			
DESCRIPTION: 182P11 Large Latch Horse Foaler				
FINISH:		# PCS:	REV:	



**CROWN INDUSTRIAL**  
So. San Francisco, Ca  
(650) 952-5150  
www.crown-industrial.com