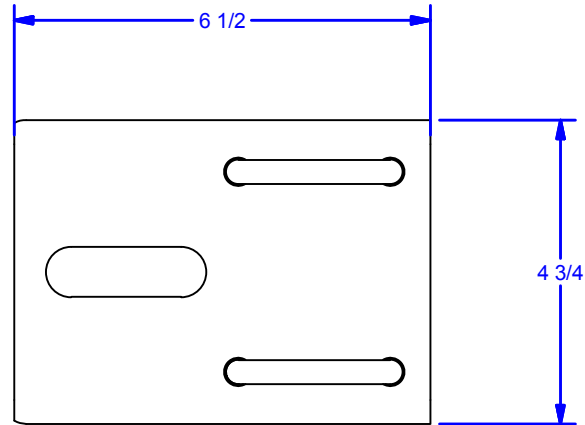
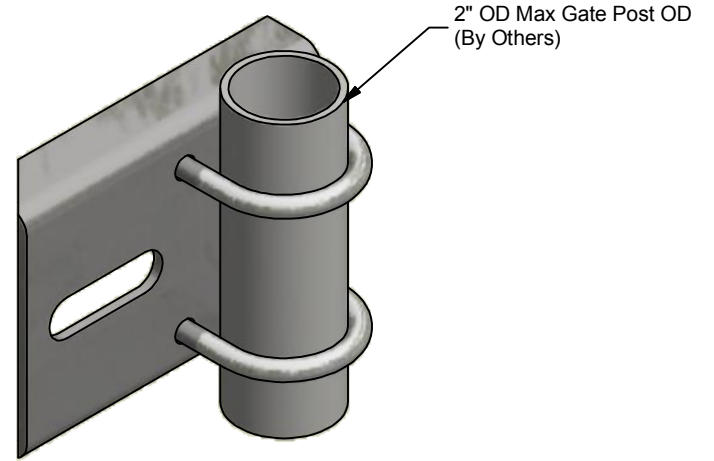
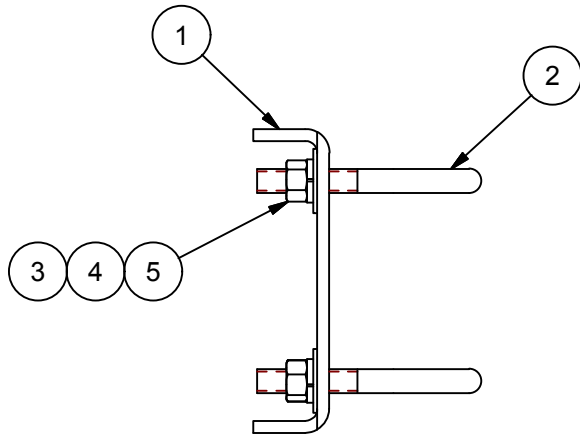
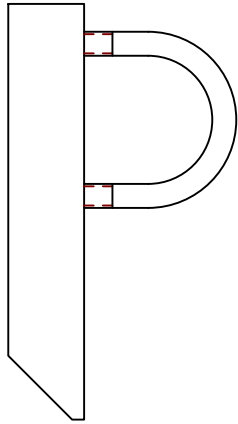


Parts List				
ITEM	QTY	ID #	DESCRIPTION	STOCK PART #
1	1	1295P153	Chain Bracket	068561-GALV
2	2	1295P168	U-BOLT, 3/8"-16	068575
3	4	FW 3/8 - Regular - Type B	Flat Washer	
4	4	3/8 LW	Lock Washer	
5	4	N 3/8 - 16	Hex Nut - Grade 5	



ALL DIMENSIONS IN INCHES

THE INFORMATION CONTAINED IN THIS DRAWING IS THE SOLE PROPERTY OF CROWN INDUSTRIAL. ANY REPRODUCTION IN PART OR AS A WHOLE WITHOUT THE WRITTEN PERMISSION OF CROWN INDUSTRIAL IS PROHIBITED.	ID #:	1295P378	STOCK PART #:	1295P378
	MATERIAL:			
DESCRIPTION:				
Chain Bracket w. U Bolt				
FINISH:	# PCS:	REV:		
Galv	1			

DWG #: 1295P371
 DRAWN: BCM 10/25/2017
 SHEET #3

File: 1295P371.idw

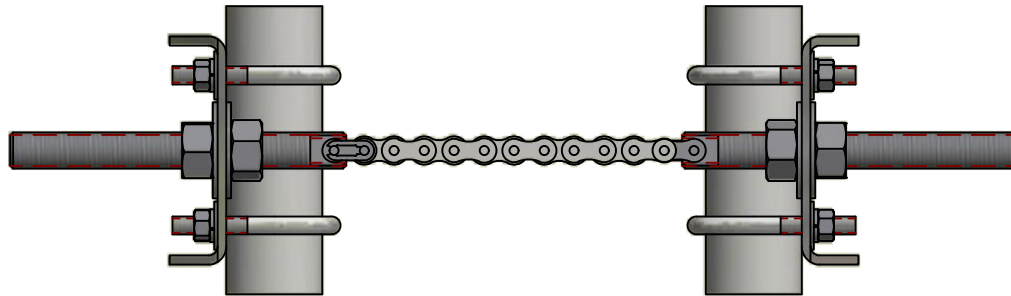
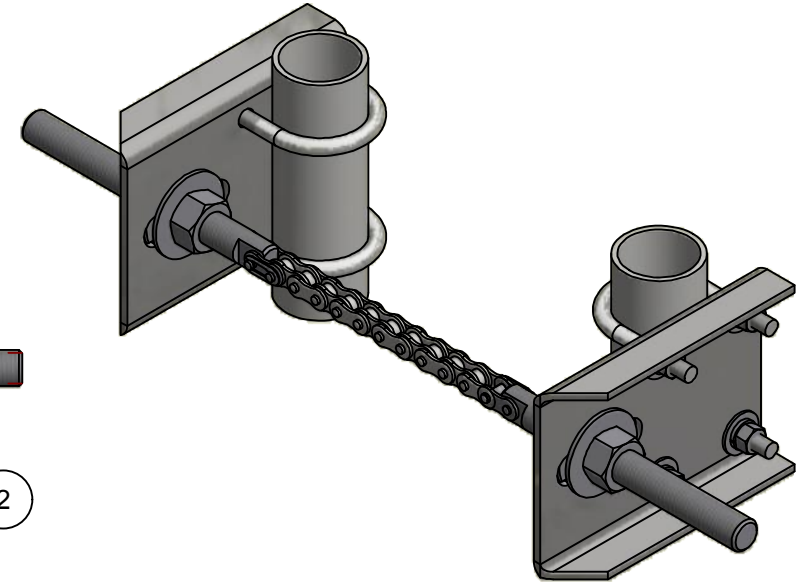
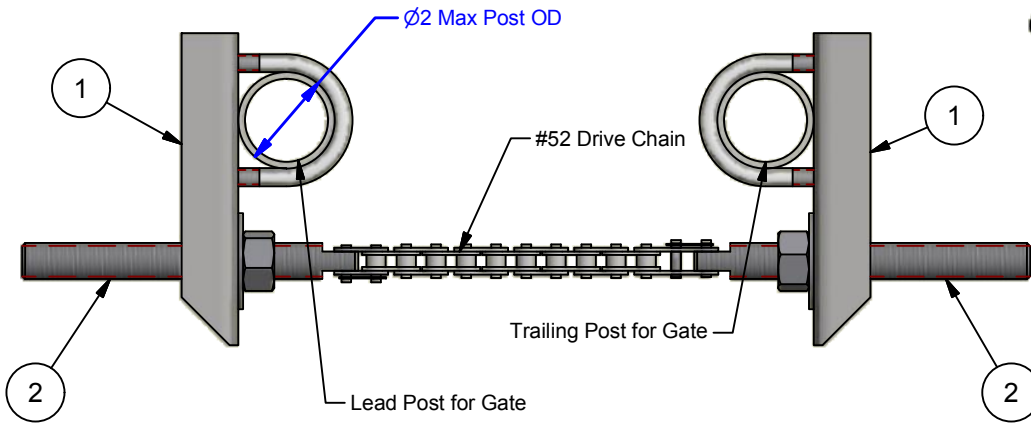


CROWN INDUSTRIAL

So. San Francisco, Ca
 (650) 952-5150

www.crown-industrial.com

Parts List				
ITEM	QTY	ID #	DESCRIPTION	STOCK PART #
1	2	1295P378	Chain Bracket w. U Bolt	1295P378
2	2	1295P366	Chain Adjustment Screw Assembly	068240



ALL DIMENSIONS IN INCHES

THE INFORMATION CONTAINED IN THIS DRAWING IS THE SOLE PROPERTY OF CROWN INDUSTRIAL. ANY REPRODUCTION IN PART OR AS A WHOLE WITHOUT THE WRITTEN PERMISSION OF CROWN INDUSTRIAL IS PROHIBITED.	ID #: 1295P341	STOCK PART #:
	MATERIAL:	
DESCRIPTION: Chain Bracket Assembly		
FINISH:	# PCS: 1	REV:



CROWN INDUSTRIAL
So. San Francisco, Ca
(650) 952-5150
www.crown-industrial.com

DWG #: 1295P371
DRAWN:BCM 6/17/2014
SHEET #2

File: 1295P371.idw