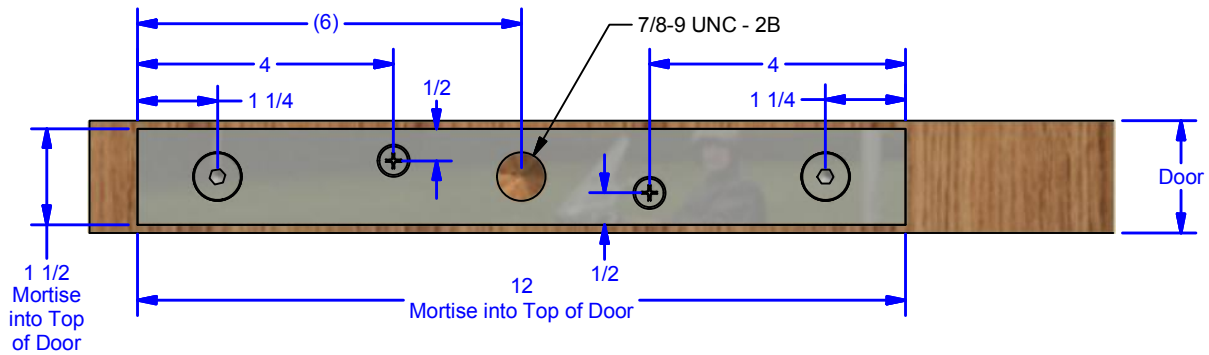
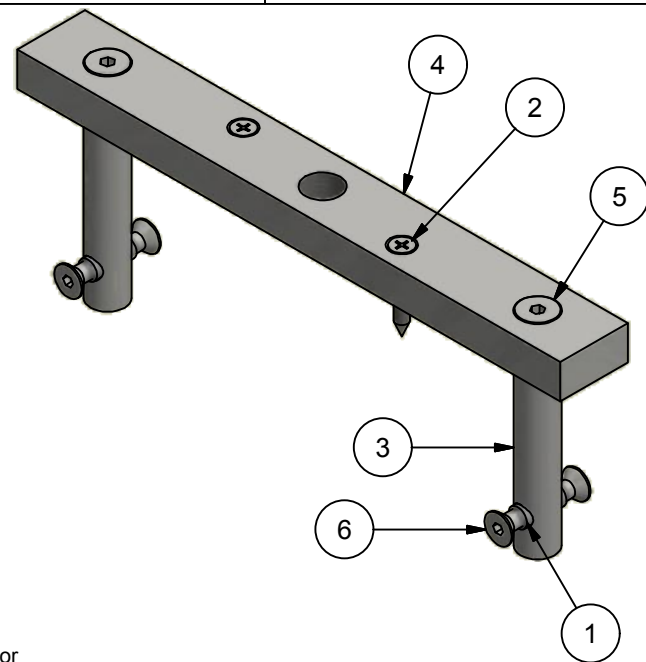
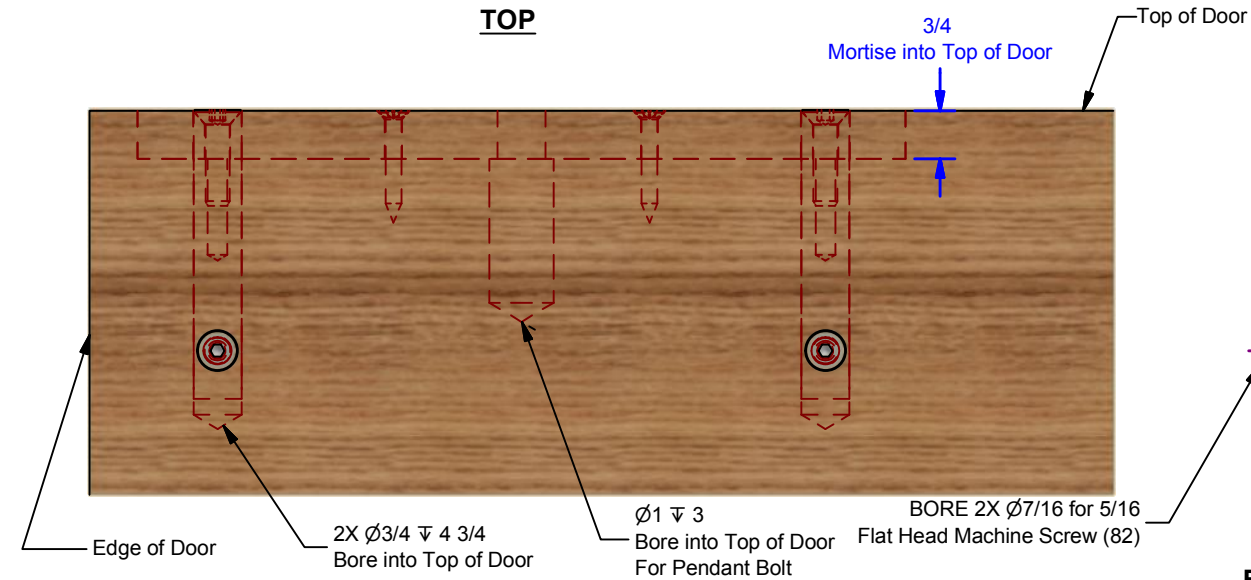


Parts List		
ITEM	QTY	DESCRIPTION
1	2	Hanger Cross Shaft
2	2	#14 FHPHWS (BY OTHERS)
3	2	Hanger Shaft
4	1	Top Plate, 1-3/4" to 2-1/4" Thick Door, 7/8" pendant
5	2	3/8-16 x 1-1/2" FSHMS
6	4	5/16-18 x 3/4" FSHMS 18-8 S.S.

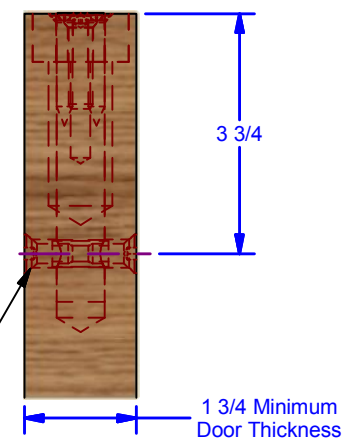


TOP

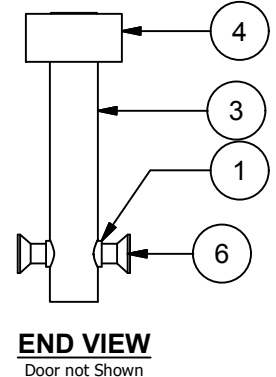


FRONT

SPECIFY DOOR THICKNESS



END VIEW



END VIEW
Door not Shown

ALL DIMENSIONS IN INCHES

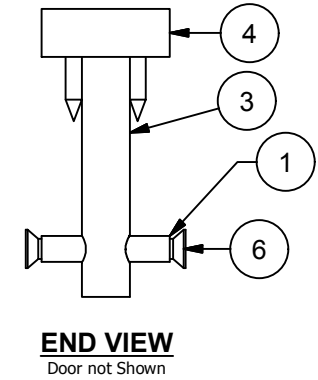
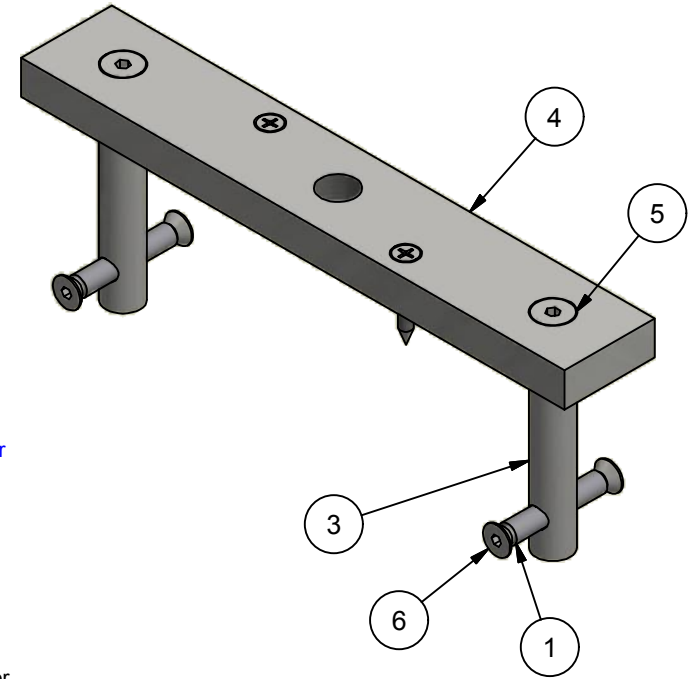
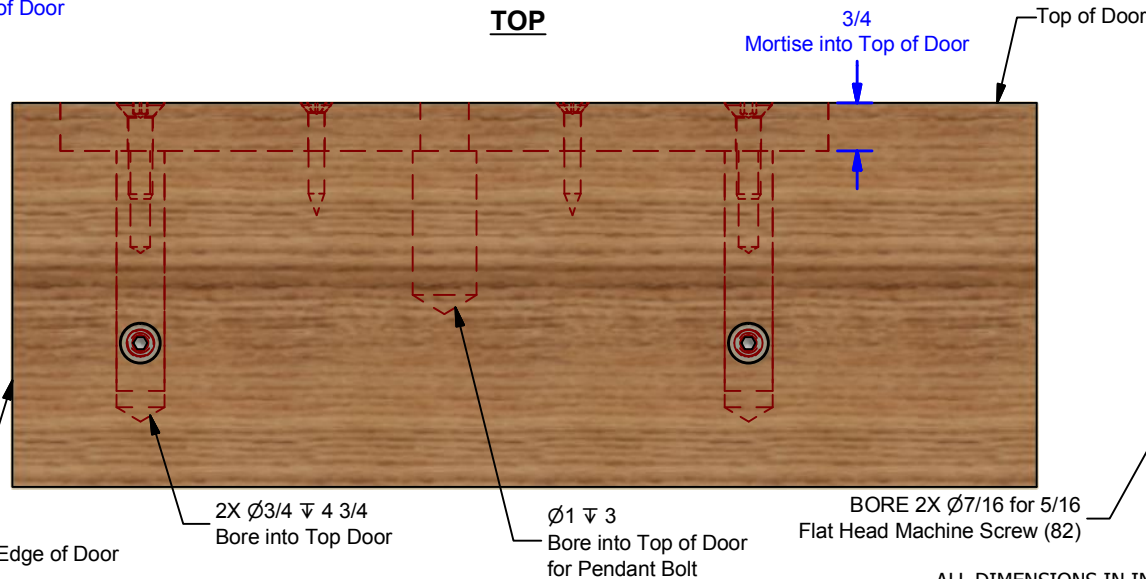
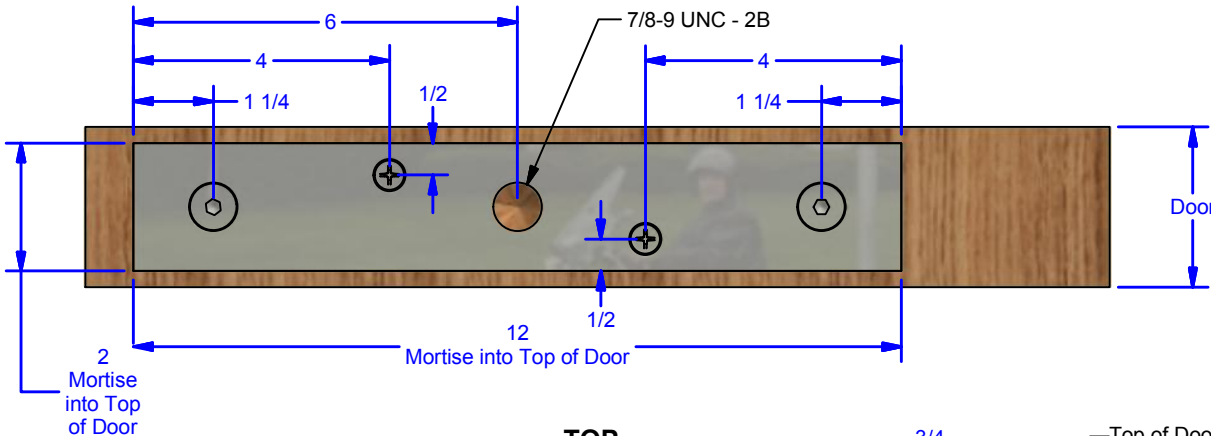
THE INFORMATION CONTAINED IN THIS DRAWING IS THE SOLE PROPERTY OF CROWN INDUSTRIAL. ANY REPRODUCTION IN PART OR AS A WHOLE WITHOUT THE WRITTEN PERMISSION OF CROWN INDUSTRIAL IS PROHIBITED.	ID #: 0000378	STOCK PART #: 135.87.150
DESCRIPTION: 135 Top Plate Assembly, 7/8 Pendant, 1-3/4" to 2-1/4" Door	MATERIAL: Steel	
FINISH: Painted	# PCS:	REV:



CROWN INDUSTRIAL
So. San Francisco, Ca
(650) 952-5150
www.crown-industrial.com

DWG #: 135
DRAWN:BCM 1/29/2009
SHEET #3
File: 0000368.idw

Parts List		
ITEM	QTY	DESCRIPTION
1	2	Hanger Cross Shaft
3	2	Hanger Shaft
4	1	Top Plate, 2-1/2" to 5-1/2" Thick Door, specify pendant
5	2	3/8-16 x 1-1/2" FSHMS
4.6	2	Flat Head Phillips Sheet Metal Screw
6	4	5/16-18 FSHMS 18-8 S.S.



ALL DIMENSIONS IN INCHES

THE INFORMATION CONTAINED IN THIS DRAWING IS THE SOLE PROPERTY OF CROWN INDUSTRIAL. ANY REPRODUCTION IN PART OR AS A WHOLE WITHOUT THE WRITTEN PERMISSION OF CROWN INDUSTRIAL IS PROHIBITED.	ID #:	STOCK PART #:
	0000376	135.87.200
DESCRIPTION:	MATERIAL:	
135 Top Plate Assembly, 7/8 Pendant, 2-1/2 to 5-1/2 Door	Steel	
FINISH:	# PCS:	REV:
Painted		

SPECIFY DOOR THICKNESS

DWG #: 135
DRAWN:BCM 1/29/2009
SHEET #7
File: 0000368.idw

CROWN INDUSTRIAL
So. San Francisco, Ca
(650) 952-5150
www.crown-industrial.com