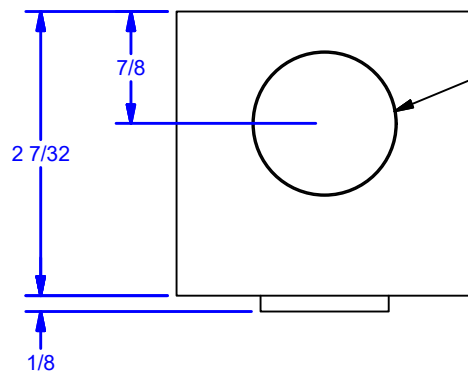


4

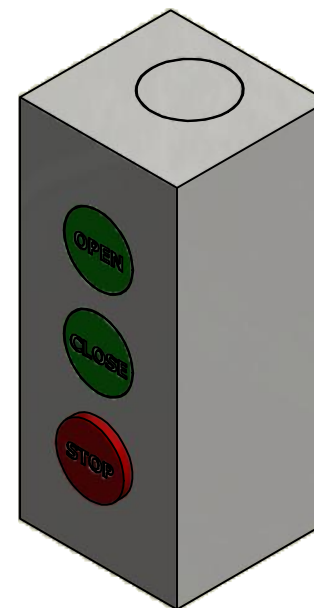
3

2

1



Knockouts for 1/2 & 3/4 Conduits, Top & Bottom



D

D

C

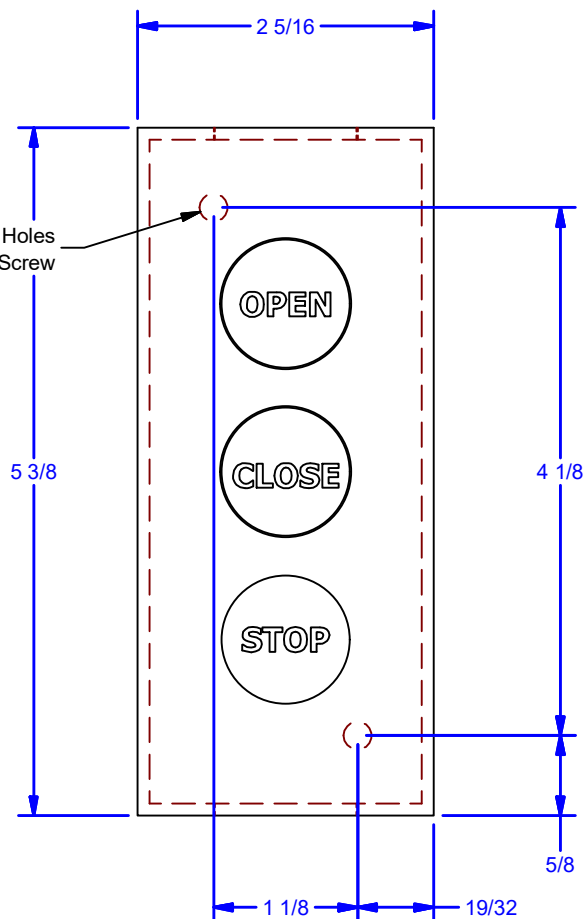
C

B

B

A

A

2X $\varnothing 7/32$ Holes
For #10 Oval Head Machine Screw

ALL DIMENSIONS IN INCHES

THE INFORMATION CONTAINED IN THIS
DRAWING IS THE SOLE PROPERTY OF
CROWN INDUSTRIAL. ANY REPRODUCTION
IN PART OR AS A WHOLE WITHOUT THE
WRITTEN PERMISSION OF CROWN
INDUSTRIAL IS PROHIBITED.

ID #:
90000136STOCK PART #:
1500-SMATERIAL:
Steel, Mild

DESCRIPTION:

Momentary Press Open/Close/Stop Push Button Station Nema 1

FINISH:

PCS:
1

REV:

DWG #: 0002283
DRAWN:BCM 9/19/2017
SHEET #15
File: 0002283.idw



**CROWN
INDUSTRIAL**

So. San Francisco, Ca
(650) 952-5150
www.crown-industrial.com