

4

3

2

1

D

D

C

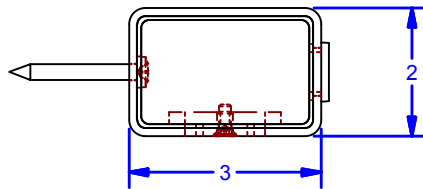
C

B

B

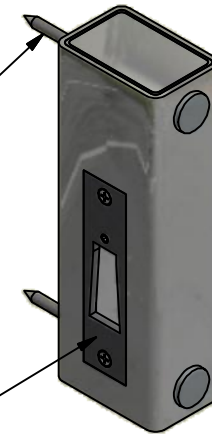
A

A



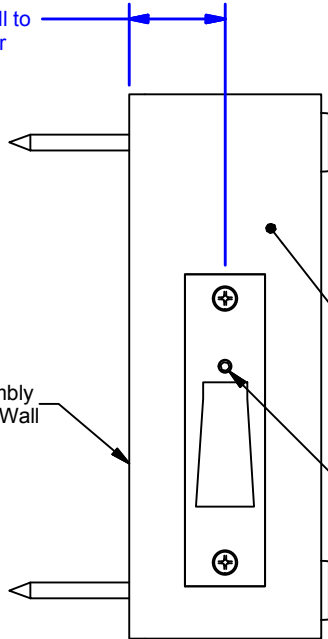
TOP VIEW

(2 ea.) #14 Security Screws (By Others)



#CR1850STK-SL
1850 Adjustable Strike Plate (Sliding)
Stainless Steel w. #4 Brushed Finish

<INDICATE>
Face of Finished Wall to
Centerline of Door



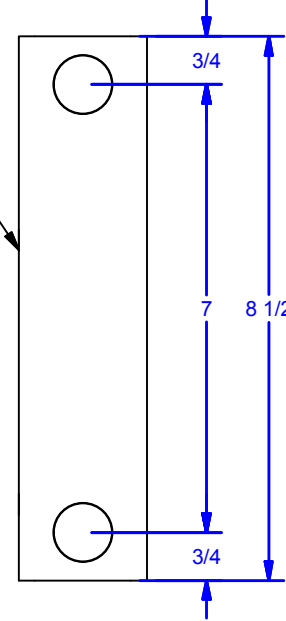
SIDE VIEW

Door Face Mounts with this Side of Strike Box Assembly

This Side of Assembly
Mounts to Wall

Stainless Steel Set Screw Provided: 1/4"-20 x 3/8"
INSTRUCTIONS: Adjust Set Screw for Proper Take-up,
Apply Lock Tite to Set Screw to Keep in Place.
PURPOSE: To Ensure Any Slop in Lock is Removed.

Door Face Mates with this Side
of Strike Box Assembly



ELEVATION VIEW

- NOTES:**
Upon ordering Indicate Handing of Door
- Right Hand to Slide: When looking at Where Jamb Keeper Mounts, the Door Slides Right to Open.
 - Left Hand to Slide: When looking at Where Jamb Keeper Mounts, the Door Slides Left to Open.

DWG #: 0000725
DRAWN:BCM 12/7/2009
SHEET #1
File: 0000725.idw

| | | | |
|--|---------|---------------|--|
| ALL DIMENSIONS IN INCHES | | | |
| THE INFORMATION CONTAINED IN THIS DRAWING IS THE SOLE PROPERTY OF CROWN INDUSTRIAL. ANY REPRODUCTION IN PART OR AS A WHOLE WITHOUT THE WRITTEN PERMISSION OF CROWN INDUSTRIAL IS PROHIBITED. | ID #: | STOCK PART #: | |
| | 0000726 | 1850JK | |
| DESCRIPTION: | | MATERIAL: | |
| Jamb Keeper for 1850 Lock (Left Hand to Slide) | | | |
| FINISH: | # PCS: | REV: | |
| Clear Zinc | | | |



CROWN INDUSTRIAL
So. San Francisco, Ca
(650) 952-5150
www.crown-industrial.com

4

3

2

1

