

4

3

2

1

D

D

C

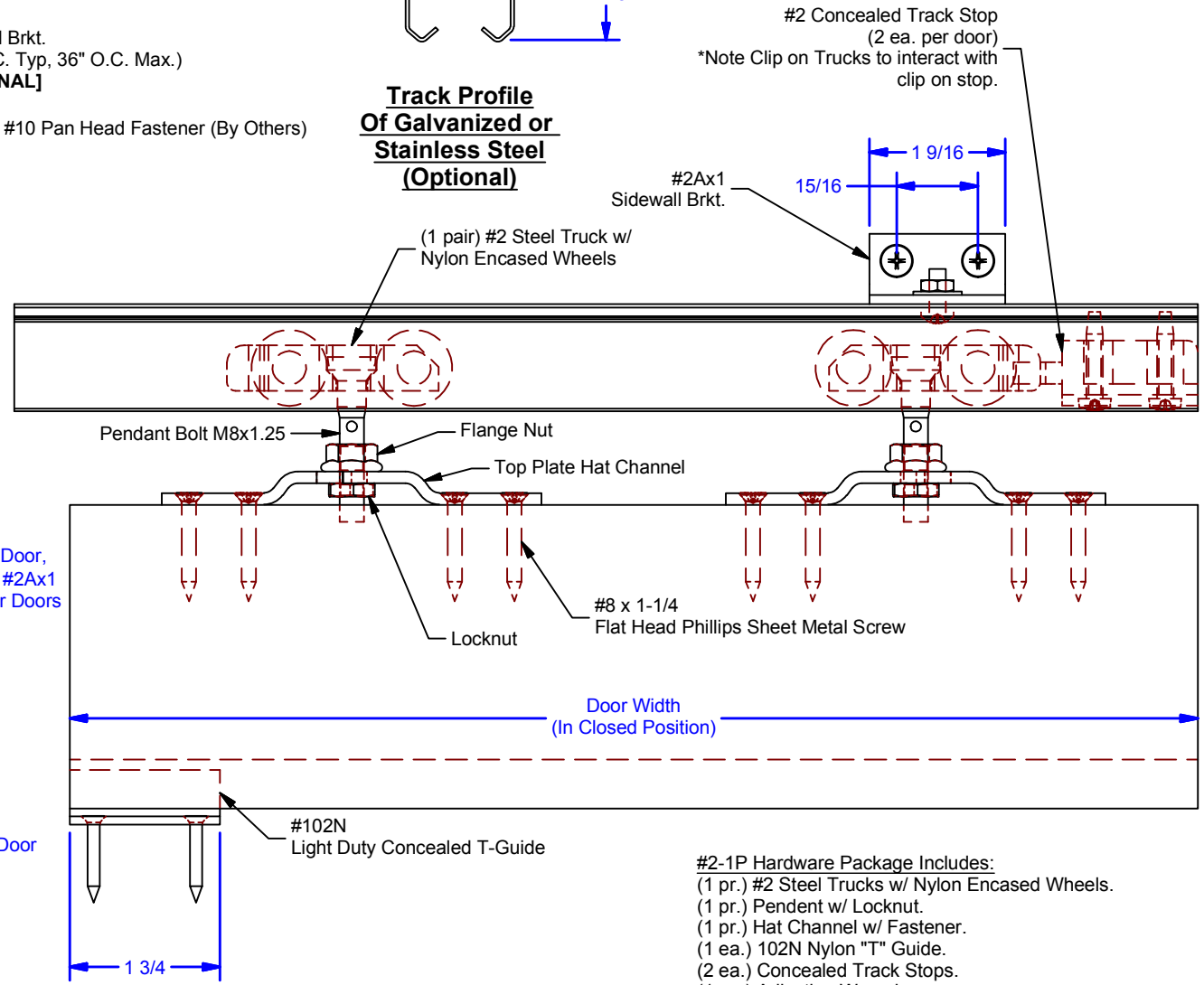
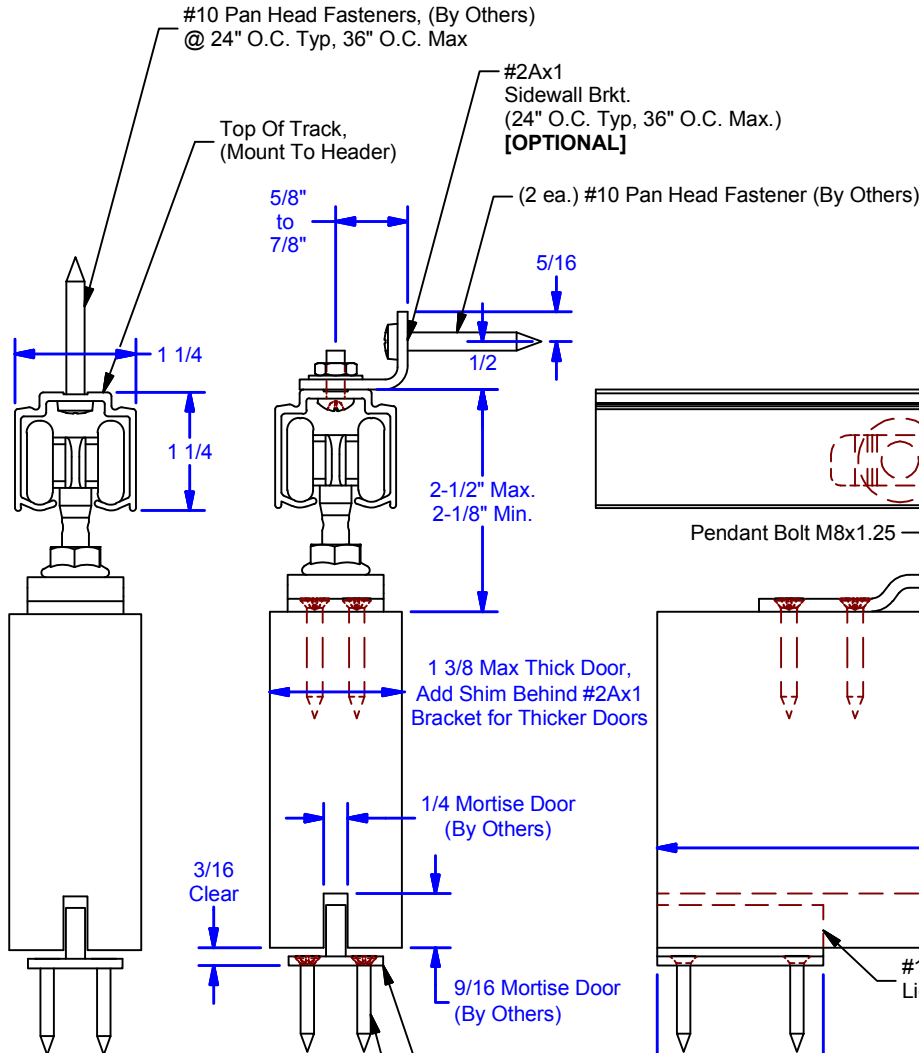
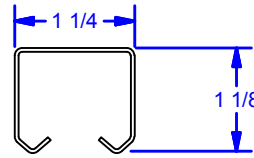
C

B

B

A

A



- #2-1P Hardware Package Includes:**
- (1 pr.) #2 Steel Trucks w/ Nylon Encased Wheels.
 - (1 pr.) Pendant w/ Locknut.
 - (1 pr.) Hat Channel w/ Fastener.
 - (1 ea.) 102N Nylon "T" Guide.
 - (2 ea.) Concealed Track Stops.
 - (1 ea.) Adjusting Wrench.

ALL DIMENSIONS IN INCHES

THE INFORMATION CONTAINED IN THIS DRAWING IS THE SOLE PROPERTY OF CROWN INDUSTRIAL. ANY REPRODUCTION IN PART OR AS A WHOLE WITHOUT THE WRITTEN PERMISSION OF CROWN INDUSTRIAL IS PROHIBITED.	ID #:	STOCK PART #:
	0001526_1	2-1P
DESCRIPTION:	#2 Track Hardware Details	
FINISH:	ANNOZINIZED ALUMINUM	# PCS: 1 REV: A



CROWN INDUSTRIAL
So. San Francisco, Ca
(650) 952-5150
www.crown-industrial.com

DWG #: 0000448
DRAWN: BCM 10/17/2016
SHEET #1
File: 0000448.idw

4

3

2

1