

4

3

2

1

D

D

C

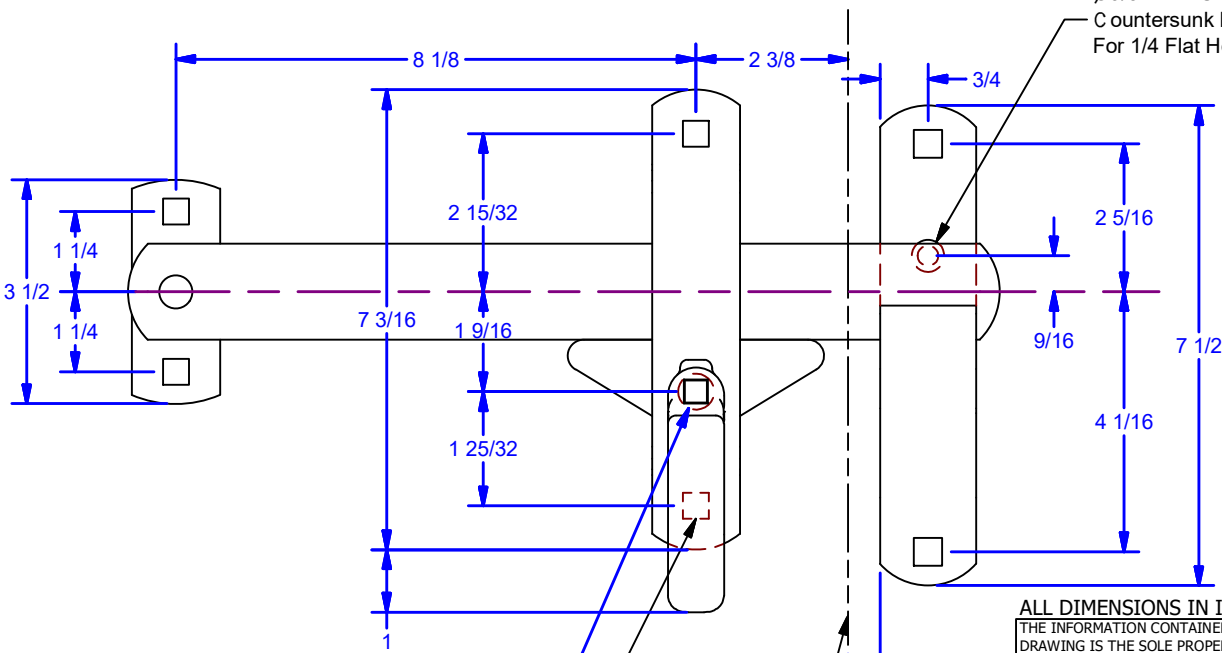
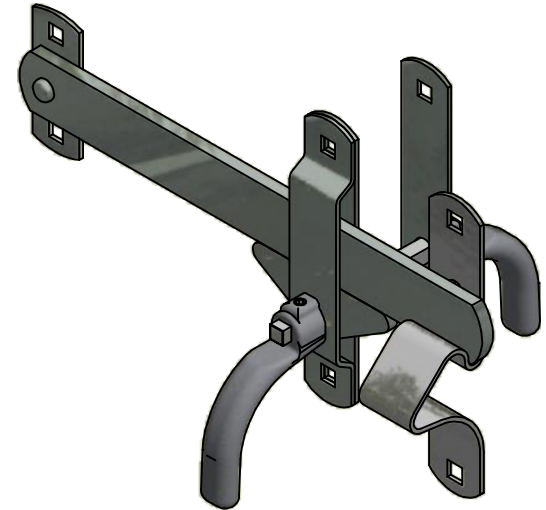
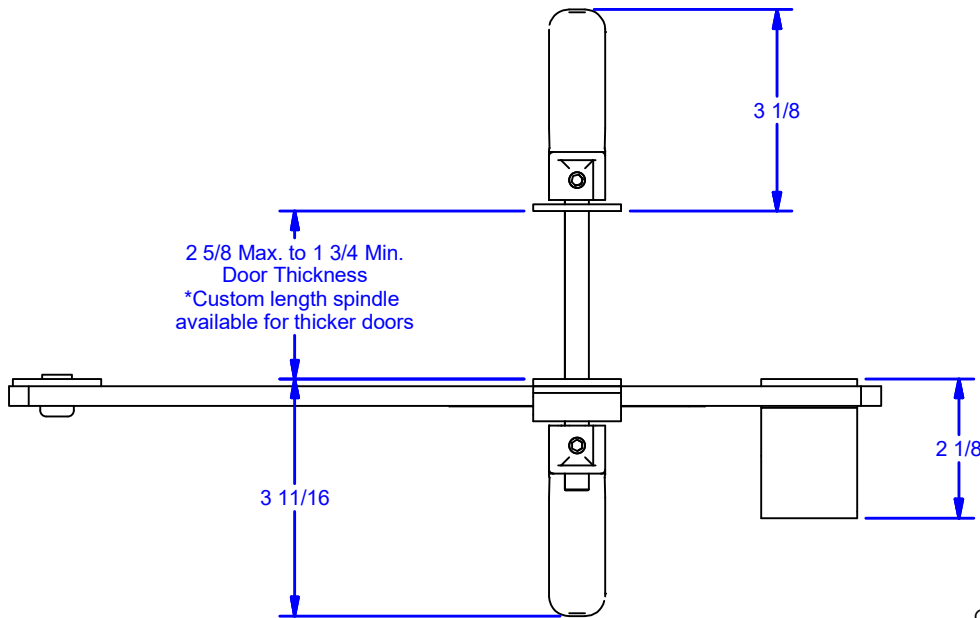
C

B

B

A

A



Drill Ø5/8" Hole Thru Door
For Spindle

Secure with (6 ea.) 3/8" Bolts
for Square Holes (By Others)

Edge of Swing Door

1/2 Max.

ALL DIMENSIONS IN INCHES

THE INFORMATION CONTAINED IN THIS DRAWING IS THE SOLE PROPERTY OF CROWN INDUSTRIAL. ANY REPRODUCTION IN PART OR AS A WHOLE WITHOUT THE WRITTEN PERMISSION OF CROWN INDUSTRIAL IS PROHIBITED.

DESCRIPTION:

Medium Swing Door Latch, For doors 1-3/4" to 2-5/8" Thick

FINISH:
Clear Zinc

ID #:
0001918

STOCK PART #:
0225.00045

MATERIAL:

PCS. REV:

DWG #: 225
DRAWN:BCM 2/25/2015
SHEET #3
File: 0001174.idw



CROWN INDUSTRIAL

So. San Francisco, Ca
(650) 952-5150

www.crown-industrial.com

4

3

2

1

A