

4

3

2

1

D

D

C

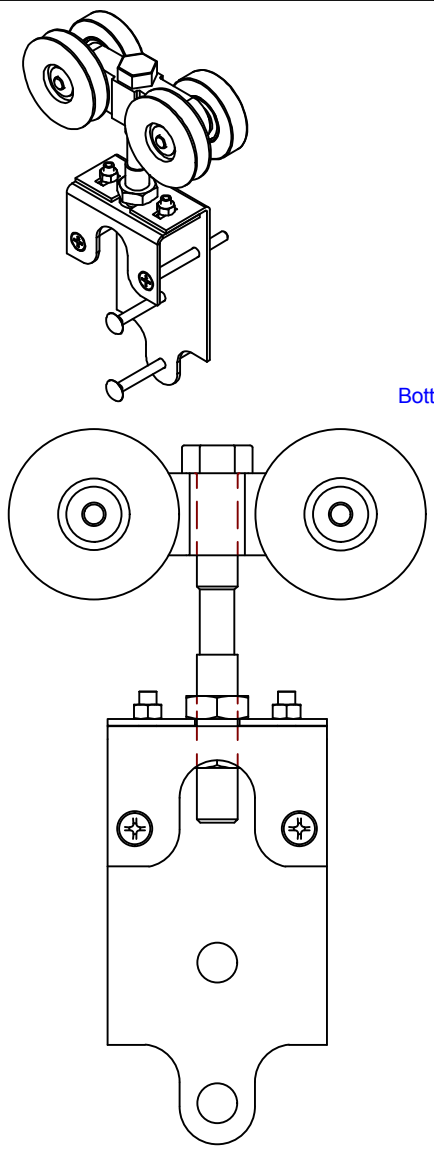
C

B

B

A

A



WALL SIDE

1 13/16
Bottom of Track to Top of Door
1-3/8" Minimum
2-1/4" Maximum

#25-1BLE
Truck, Ball Bearing 1,500lb Capacity

2 13/16

Bottom of #25 Track

3/4 - 10 UNC JN
Jam Hex Nut - Grade 5, Zinc

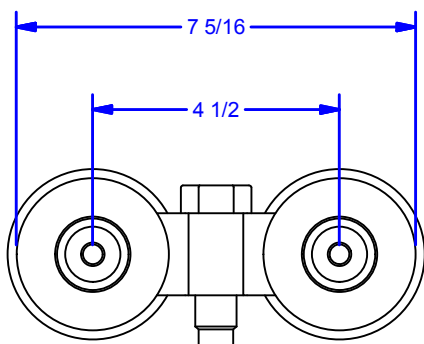
Top of Door

HN 3/4 - 10 Zinc-5
Hex Nut - Grade 5, Zinc

#25A2-BLE
Apron Assembly

Wall Side Face

1-3/4 to 2-1/4
Door Thickness



EXTERIOR ELEVATION

7 5/16

4 1/2

1/4

1 3/4

2 7/16

2 9/16

7 3/4

1/2

4

ALL DIMENSIONS IN INCHES

THE INFORMATION CONTAINED IN THIS DRAWING IS THE SOLE PROPERTY OF CROWN INDUSTRIAL. ANY REPRODUCTION IN PART OR AS A WHOLE WITHOUT THE WRITTEN PERMISSION OF CROWN INDUSTRIAL IS PROHIBITED.

DESCRIPTION:

BBL Hanger, 1-3/4" to 2-1/4" *1500 Capacity

FINISH:

Powder Coat Tan, Black, or Galvanized

ID #: 0002344

MATERIAL:

STOCK PART #: 25H2-BLE

# PCS:	1	REV:	
--------	---	------	--



CROWN INDUSTRIAL

So. San Francisco, Ca
(650) 952-5150

www.crown-industrial.com

DWG #: 25-1BLE
DRAWN:BCM 11/23/2011
SHEET #2

File: 0001098.idw

4

3

2

1



4

3

2

1

D

D

C

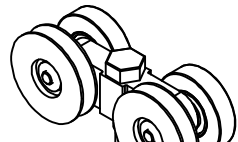
C

B

B

A

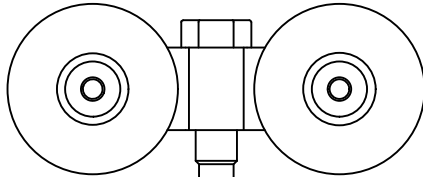
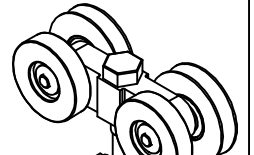
A



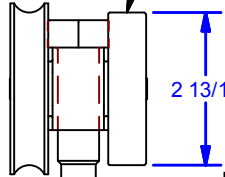
5/16"-18 x 4" Flat Head Phillips Machine Screw, Fully Threaded
 5/16"-18 x 3-1/2" Flat Head Phillips Machine Screw, Fully Threaded

5/16"-11 x 3-1/2" Carriage Bolt *fully threaded

#25-1BLE
 Truck, Ball Bearing 1,500lb Capacity

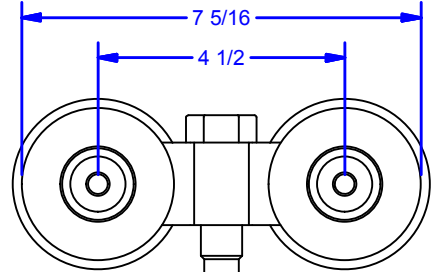


1 13/16
 Bottom of Track to Top of Door
 1 3/8 Minimum
 2-1/4 Maximum



2 13/16

Bottom of #25 Track



7 5/16

4 1/2

3/4 - 10 UNC JN
 Jam Hex Nut - Grade 5, Zinc

Top of Door

HN 3/4 - 10 Zinc-5
 Hex Nut - Grade 5, Zinc

#25A4-BLE
 Apron Assembly

2 7/16

1 5/8 ±

2-1/4 to 3
 Door Thickness

1/4

1 3/4

2 7/16

2 9/16

7 3/4

1/2

EXTERIOR ELEV

WALL SIDE

ALL DIMENSIONS IN INCHES

THE INFORMATION CONTAINED IN THIS DRAWING IS THE SOLE PROPERTY OF CROWN INDUSTRIAL. ANY REPRODUCTION IN PART OR AS A WHOLE WITHOUT THE WRITTEN PERMISSION OF CROWN INDUSTRIAL IS PROHIBITED.

ID #: 0001202-1
 MATERIAL:

STOCK PART #: 25H4-BLE

DESCRIPTION:
 BBL Hanger, 2-1/4" to 3" *1500 Capacity

FINISH:
 Powder Coat Tan, Black, or Galvanized

PCS: 1
 REV:



CROWN INDUSTRIAL

So. San Francisco, Ca
 (650) 952-5150
 www.crown-industrial.com

DWG #: 25-1BLE
 DRAWN:BCM 11/23/2011
 SHEET #3
 File: 0001098.idw

4

3

2

1

