

4

3

2

1

D

D

C

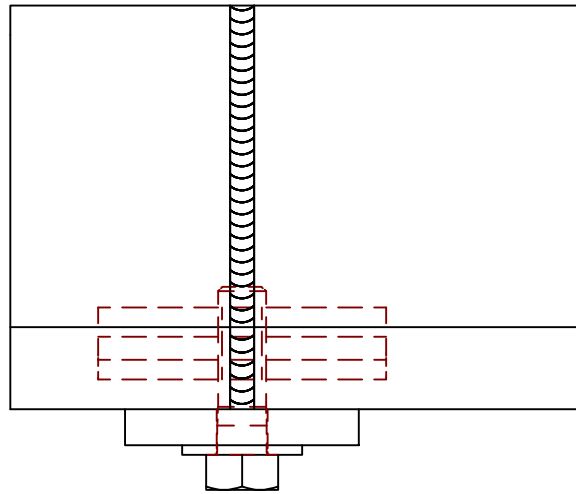
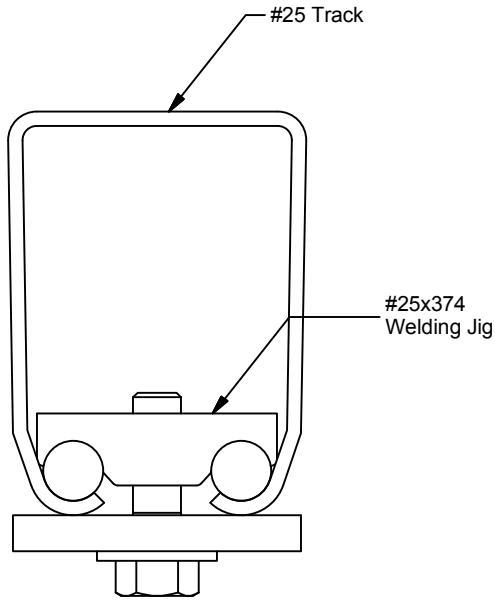
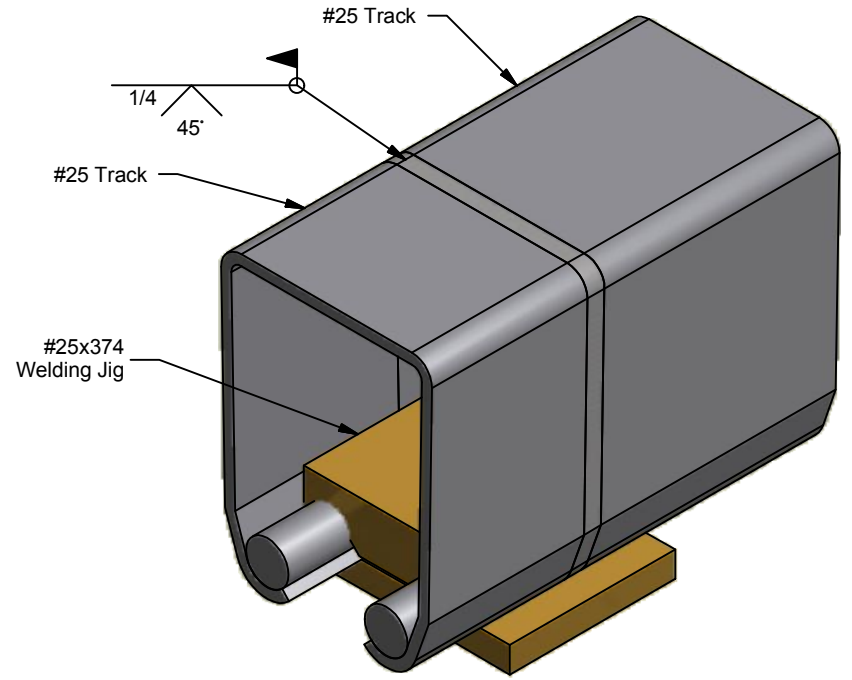
C

B

B

A

A



ALL DIMENSIONS IN INCHES

THE INFORMATION CONTAINED IN THIS DRAWING IS THE SOLE PROPERTY OF CROWN INDUSTRIAL. ANY REPRODUCTION IN PART OR AS A WHOLE WITHOUT THE WRITTEN PERMISSION OF CROWN INDUSTRIAL IS PROHIBITED.

DESCRIPTION:

Welding Jig Assembly

FINISH:

PART #: 0001801

STOCK #:

MATERIAL: Welded Steel Mild

PCS: 1
REV: 1

DWG #: 0001802
DRAWN:BCM 1/5/2015
SHEET #1
File: 0001802.idw



CROWN INDUSTRIAL

So. San Francisco, Ca
(650) 952-5150

www.crown-industrial.com

4

3

2

1



D

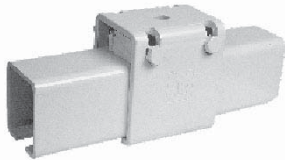
A

No. 5 Track Brackets No. 5 & 25 Welding Kits

NO. 5 TRACK BRACKETS

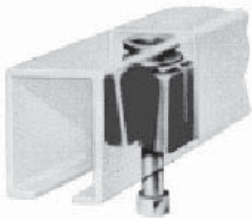


The **5PX18** bracket is used only for suspending #5 track by means of a single bolt. The bracket should be used for supporting the track when the joints are welded and should be used on curves except when the track is supported by angles or flat bar. Distance from top of bracket to bottom of track is 3-3/4". Finish: Painted. Weight: 2 lbs.



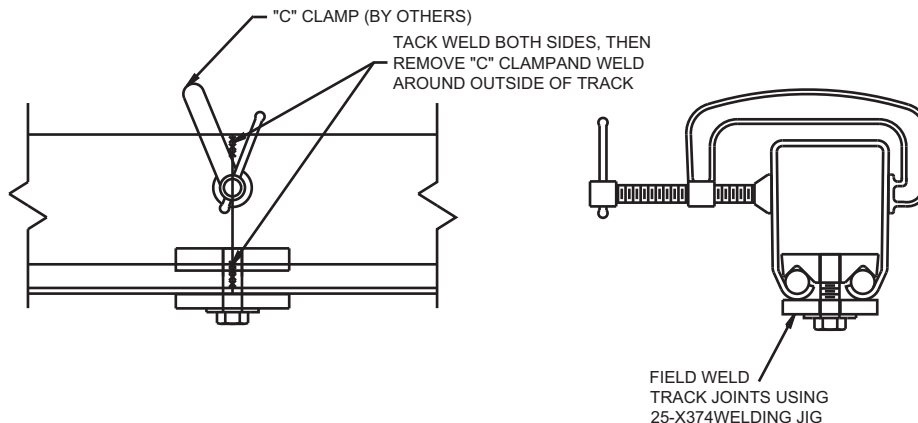
The **5PX18** bracket is used only for suspending #5 track by means of a single bolt. The bracket should be used for supporting the track when the joints are welded and should be used on curves except when the track is supported by angles or flat bar. Distance from top of bracket to bottom of track is 3-3/4". Finish: Painted. Weight: 2 lbs.

NO. 5-X155 WELDING JIG



The welding method is recommended since it makes a continuous section of track eliminating the need for joint brackets. The welding jig aligns the inside of the track, holding the two sections in position for welding thus allowing the weld bead to be flush with the track to ensure smooth operation. Finish: Brass. Weight: 1-1/2 lbs.

NO. 25-X374 WELDING JIG



No. 25-X374 Weld Kit

The welding jig is designed to hold #25 track ends in alignment where a field welded joint is required, ensuring the weld bead to be flush with the track for smooth operation. Reusable for up to 30-50 welding operations, depending on temperature usage.

Construction: Brass or bronze fixture clamp parts & steel bolt. Packed: Boxed with instruction sheet. Weight: 2-1/2 lbs.

Note: #25 track joints must be welded on all manual applications over 2500 lbs and for all powered applications.