

4

3

2

1

D

D

C

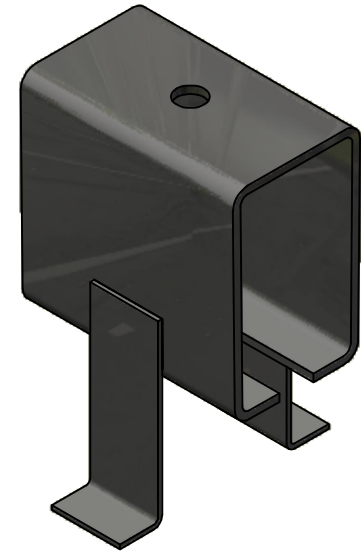
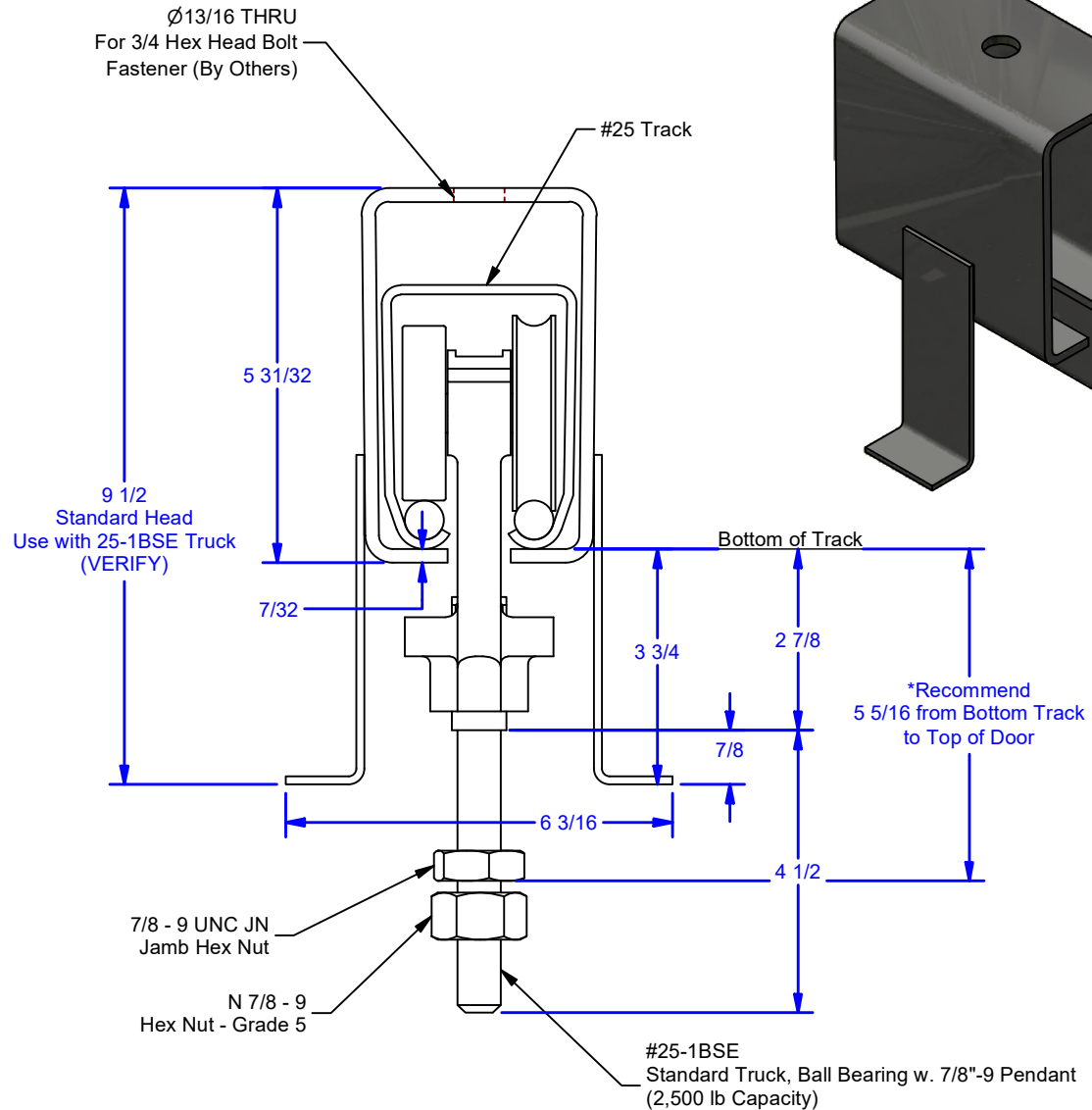
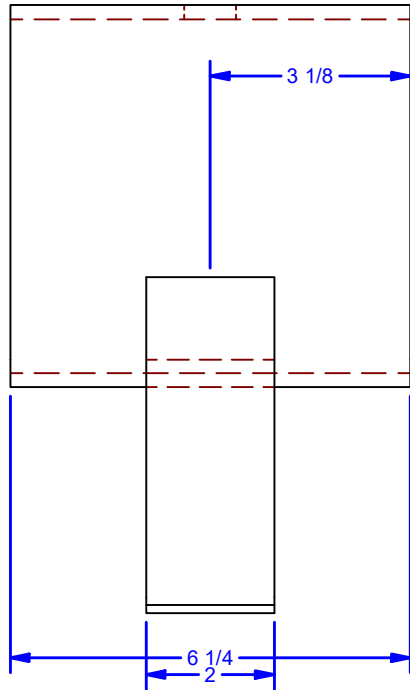
C

B

B

A

A



**Note:**  
Spaced on a maximum of 60" centers for 2,500 lb weight capacity.

**Available Finishes:**  
25Px18B-SE: Powder Coat Black  
25Px18-SE: Powder Coat Pebble Tan  
25Gx18-SE: Hot Dipped Galvanized

DWG #: #25  
DRAWN:BCM 11/7/2011  
SHEET #8  
File: 0000455.idw

**ALL DIMENSIONS IN INCHES**

THE INFORMATION CONTAINED IN THIS DRAWING IS THE SOLE PROPERTY OF CROWN INDUSTRIAL. ANY REPRODUCTION IN PART OR AS A WHOLE WITHOUT THE WRITTEN PERMISSION OF CROWN INDUSTRIAL IS PROHIBITED.	ID #:	0001173-01	STOCK PART #:	25x18-SE
	MATERIAL:	Welded Steel Mild		
DESCRIPTION: Overhead Center Bracket w/ Soffit Clips [Std Head]				
FINISH:			# PCS:	REV:



**CROWN INDUSTRIAL**  
So. San Francisco, Ca  
(650) 952-5150  
www.crown-industrial.com

4

3

2

1

A

4

3

2

1

D

D

C

C

B

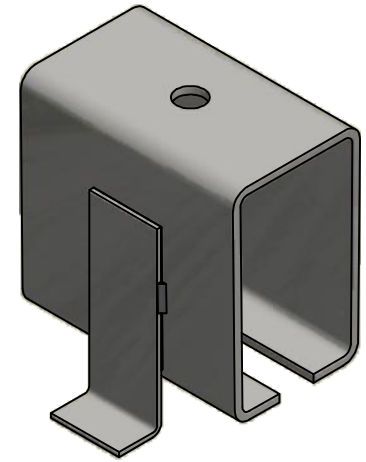
B

A

A

Ø13/16 THRU  
For 3/4 Hex Head Bolt  
Fastener (By Others)

#25 Track



7 1/8  
Low Head  
Use with 25-1BLE Truck  
(VERIFY)

5 31/32

1 15/16

2

6 1/4

3/4 - 10 UNC JN  
Jam Hex Nut - Grade 5, Zinc

HN 3/4 - 10 Zinc-5  
Hex Nut - Grade 5, Zinc

7/32

6 3/16

#25-1BLE  
Low Head Truck, Ball Bearing w. 3/4"-10 Pendant  
(1,500 lb Capacity)

Bottom of Track

1 3/8

2 1/16

3 7/16

1

**Note:**  
Spaced on a maximum of 60" centers for 1,500 lb weight capacity.

**Available Finishes:**  
25Px18B-SE.1BLE: Powder Coat Black  
25Px18-SE.1BLE: Powder Coat Pebble Tan  
25Gx18-SE.1BLE: Hot Dipped Galvanized

DWG #: #25  
DRAWN:BCM 11/7/2011  
SHEET #8  
File: 0000455.idw

**ALL DIMENSIONS IN INCHES**

THE INFORMATION CONTAINED IN THIS DRAWING IS THE SOLE PROPERTY OF CROWN INDUSTRIAL. ANY REPRODUCTION IN PART OR AS A WHOLE WITHOUT THE WRITTEN PERMISSION OF CROWN INDUSTRIAL IS PROHIBITED.

ID #:

0001173-02

STOCK PART #:

25x18-SE.1BLE

MATERIAL:

Welded Steel Mild

DESCRIPTION:

Overhead Center Bracket w/ Soffit Clips [Low Head]

FINISH:

# PCS | REV:



**CROWN INDUSTRIAL**

So. San Francisco, Ca  
(650) 952-5150

www.crown-industrial.com

4

3

2

1

