

4

3

2

1

D

D

C

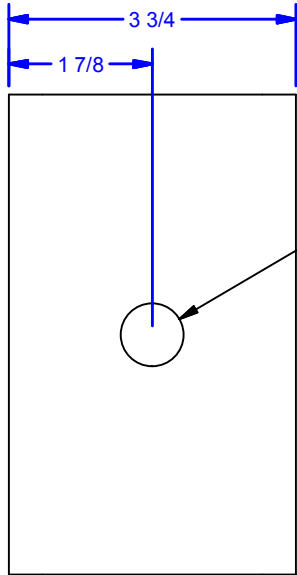
C

B

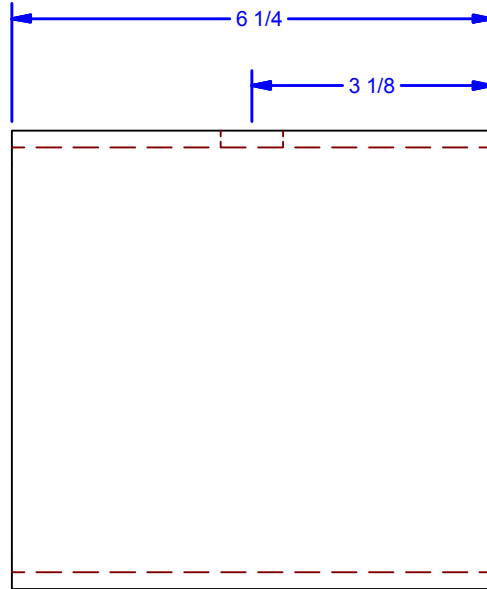
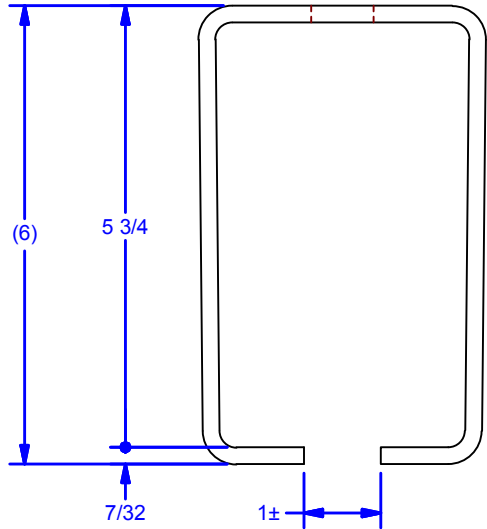
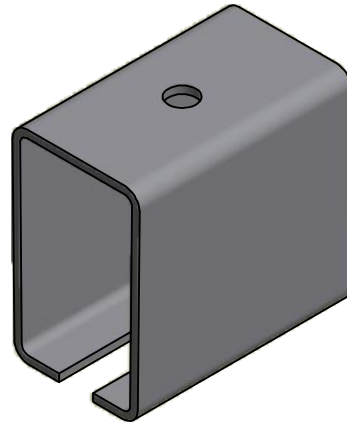
B

A

A



Ø13/16 THRU
For 3/4 Hex Head Bolt



Note:
Spaced on a maximum of 60" centers for 2,500 lb weight capacity.
Spaced on a maximum of 24" centers for 5,000 lb weight capacity

Avail. Finishes:
Powder Coat Black
Powder Coat Pebble Tan
Hot Dipped Galvanized

ALL DIMENSIONS IN INCHES

THE INFORMATION CONTAINED IN THIS DRAWING IS THE SOLE PROPERTY OF CROWN INDUSTRIAL. ANY REPRODUCTION IN PART OR AS A WHOLE WITHOUT THE WRITTEN PERMISSION OF CROWN INDUSTRIAL IS PROHIBITED.	ID #:	0000351	STOCK PART #:	25X18
	MATERIAL:	Steel, Mild		
DESCRIPTION: Overhead Center Bracket				
FINISH:			# PCS:	1
			REV:	



CROWN INDUSTRIAL
So. San Francisco, Ca
(650) 952-5150
www.crown-industrial.com

DWG #: #25
DRAWN:BCM 3/6/2009
SHEET #1
File: 0000455.idw

4

3

2

1

