

Note:
Space on a maximum of 24" Centers for most applications

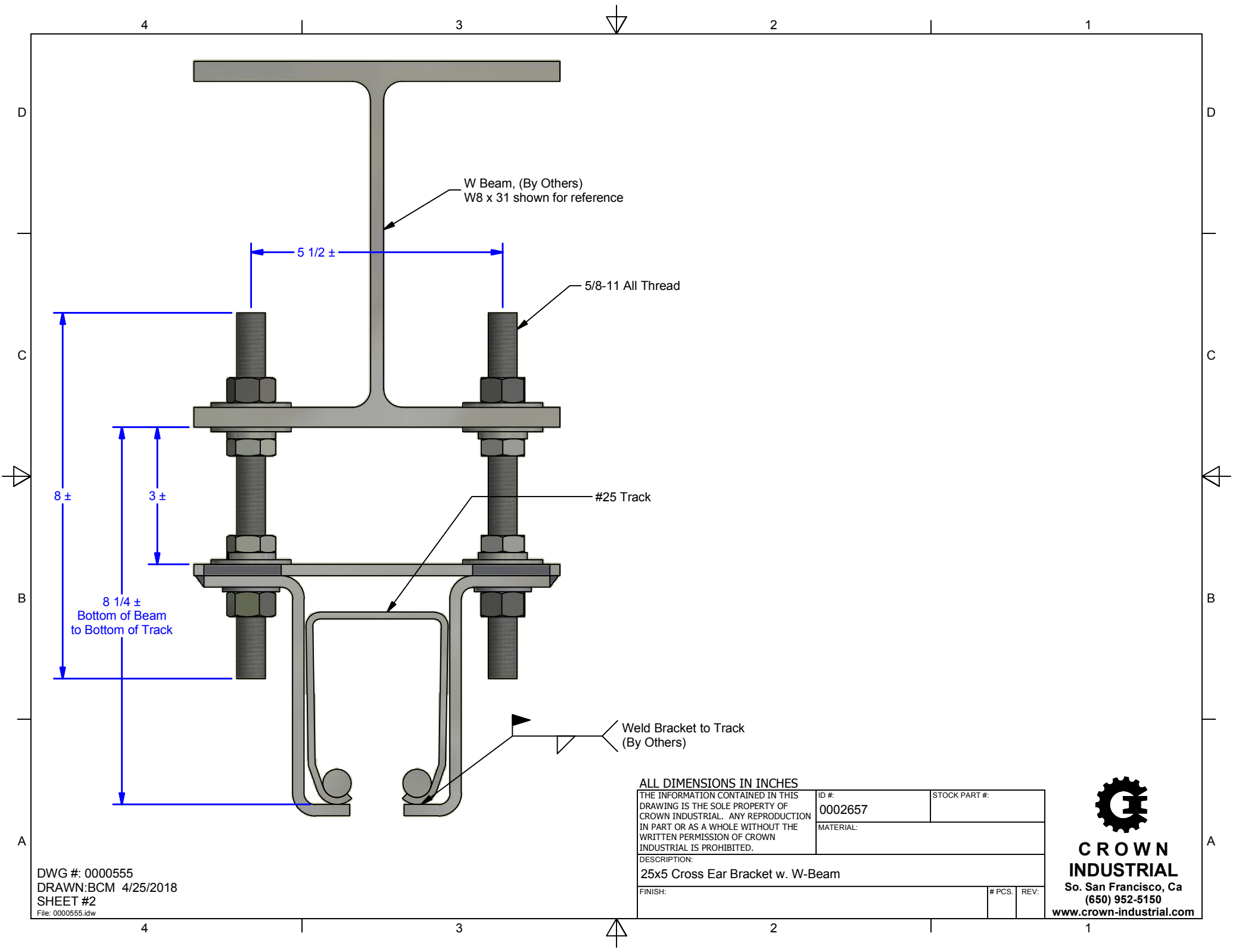
ALL DIMENSIONS IN INCHES

THE INFORMATION CONTAINED IN THIS DRAWING IS THE SOLE PROPERTY OF CROWN INDUSTRIAL. ANY REPRODUCTION IN PART OR AS A WHOLE WITHOUT THE WRITTEN PERMISSION OF CROWN INDUSTRIAL IS PROHIBITED.	ID #:	STOCK PART #:
	0001997	25x5
MATERIAL:		
Welded Steel Mild		
DESCRIPTION:		
Cross Ear Bracket Weldment for #25 Track		
FINISH:		# PCS. REV:
Painted or Hot Dipped Galvanized		



CROWN INDUSTRIAL
So. San Francisco, Ca
(650) 952-5150
www.crown-industrial.com

DWG #: 0000555
DRAWN:BCM 5/21/2009
SHEET #1
File: 0000555.idw



W Beam, (By Others)
W8 x 31 shown for reference

5 1/2 ±

5/8-11 All Thread

#25 Track

8 ±

3 ±

8 1/4 ±
Bottom of Beam
to Bottom of Track

Weld Bracket to Track
(By Others)

ALL DIMENSIONS IN INCHES

THE INFORMATION CONTAINED IN THIS DRAWING IS THE SOLE PROPERTY OF CROWN INDUSTRIAL. ANY REPRODUCTION IN PART OR AS A WHOLE WITHOUT THE WRITTEN PERMISSION OF CROWN INDUSTRIAL IS PROHIBITED.

ID #: 0002657

STOCK PART #:

MATERIAL:

DESCRIPTION:
25x5 Cross Ear Bracket w. W-Beam

FINISH:

PCS: | REV:

DWG #: 0000555
DRAWN:BCM 4/25/2018
SHEET #2
File: 0000555.idw



CROWN INDUSTRIAL
So. San Francisco, Ca
(650) 952-5150
www.crown-industrial.com