

4

3

2

1

D

D

C

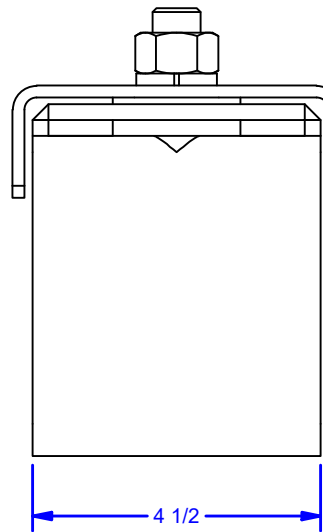
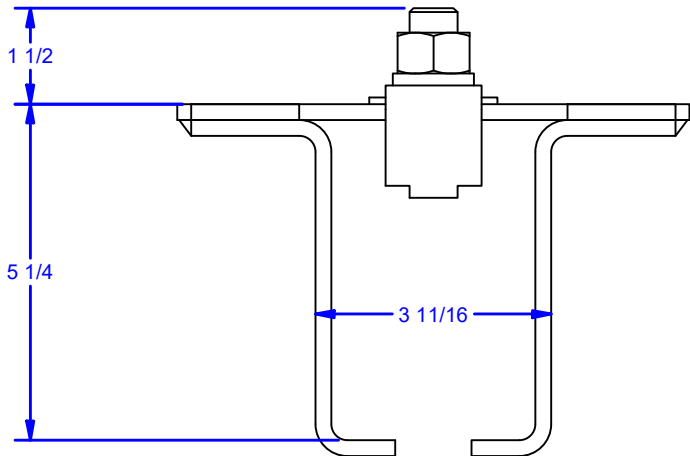
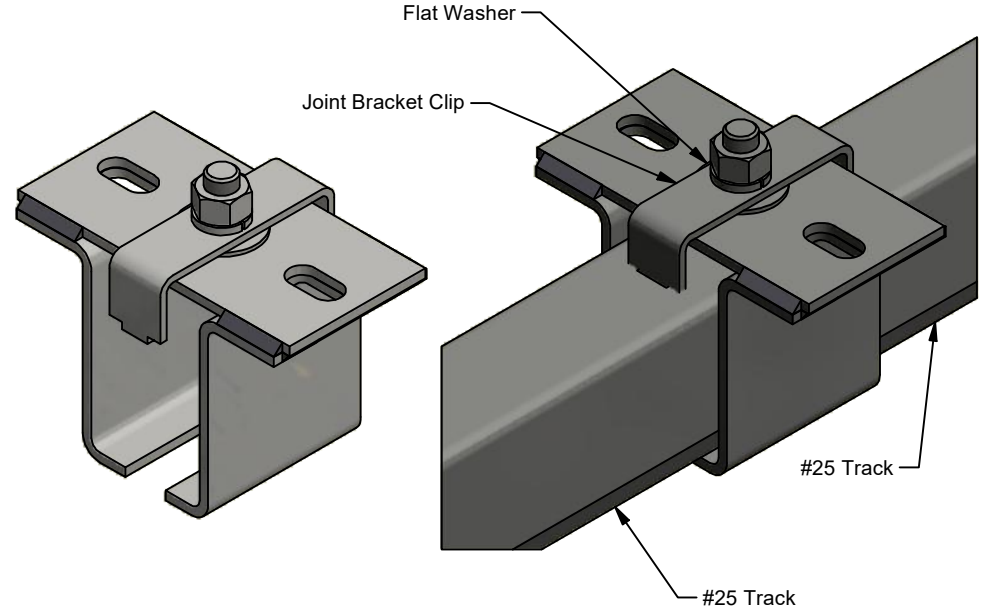
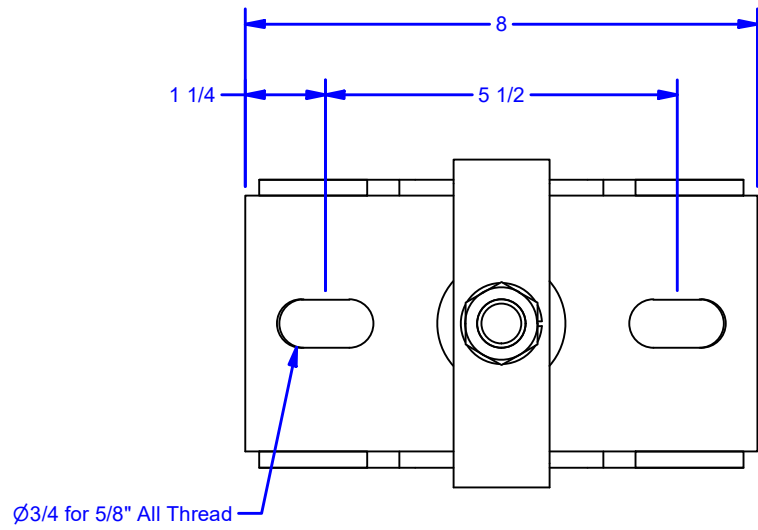
C

B

B

A

A



**Note:**

- Maximum Spacing between brackets of 24" Centers for most applications
- Used to join (2 ea) lengths of track together

**Available Finishes:**

- 25Px59:** Powder Coat Pebble Tan
- 25Px59B:** Powder Coat Black
- 25Gx59:** Hot Dipped Galvanized

DWG #: 0000555  
 DRAWN:BCM 12/13/2019  
 SHEET #2  
 File: 0000555.idw

**ALL DIMENSIONS IN INCHES**

THE INFORMATION CONTAINED IN THIS DRAWING IS THE SOLE PROPERTY OF CROWN INDUSTRIAL. ANY REPRODUCTION IN PART OR AS A WHOLE WITHOUT THE WRITTEN PERMISSION OF CROWN INDUSTRIAL IS PROHIBITED.	ID #:	0003001	STOCK PART #:	25x59
	MATERIAL:		Mild Steel	
DESCRIPTION:				
Cross Ear Joint Bracket				
FINISH:			# PCS:	REV:



**CROWN INDUSTRIAL**  
 So. San Francisco, Ca  
 (650) 952-5150  
 www.crown-industrial.com

4

3

2

1

