

4

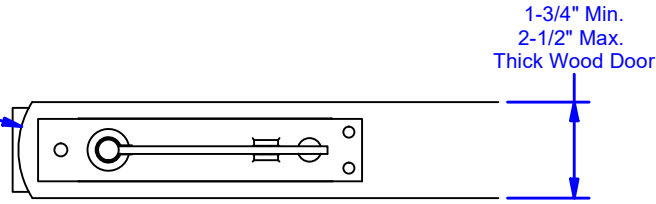
3

2

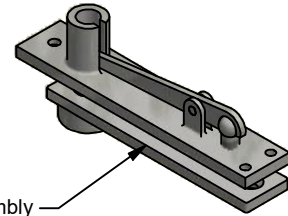
1



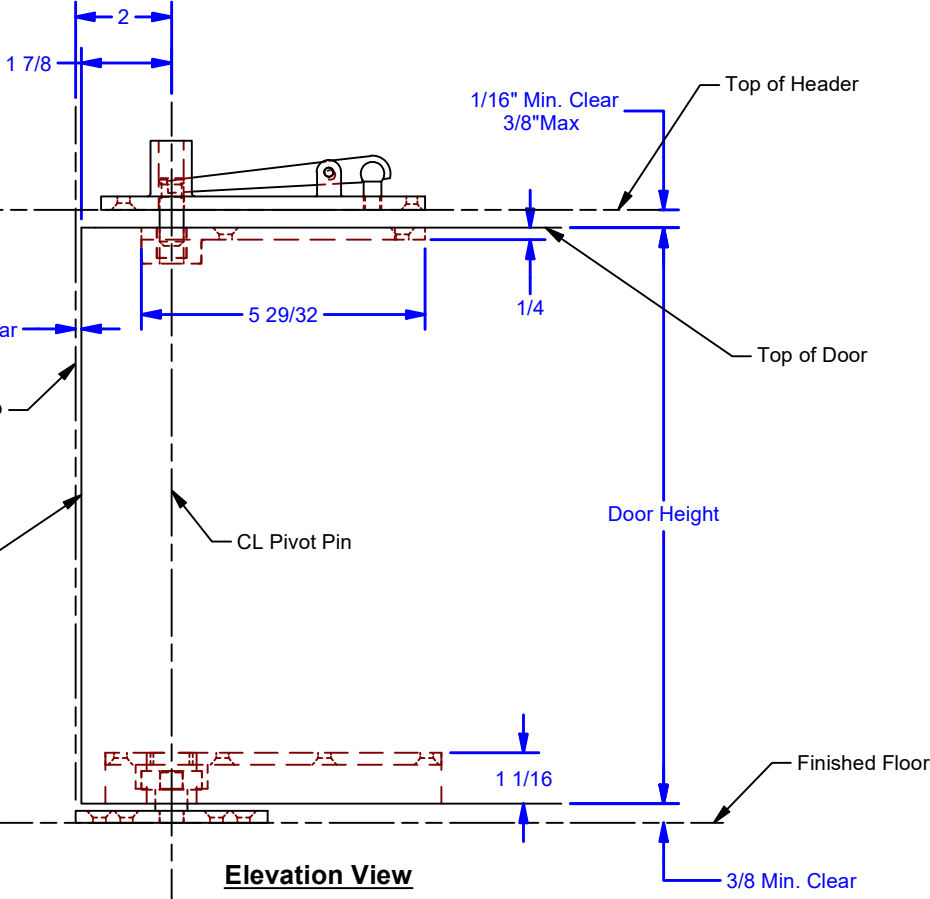
R1 7/8
Beveled Edge
of Door



Top View

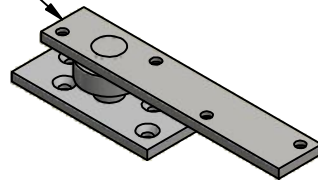


Adjustable Top Pivot Assembly



Elevation View

Bottom Pivot Assembly



Edge of Jamb

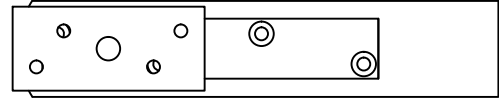
Edge of Door

CL Pivot Pin

Door Height

Finished Floor

3/8 Min. Clear



Bottom View

ALL DIMENSIONS IN INCHES

THE INFORMATION CONTAINED IN THIS DRAWING IS THE SOLE PROPERTY OF CROWN INDUSTRIAL. ANY REPRODUCTION IN PART OR AS A WHOLE WITHOUT THE WRITTEN PERMISSION OF CROWN INDUSTRIAL IS PROHIBITED.	ID #:	STOCK PART #:
	0003079	370S
DESCRIPTION:	Standard Top / Bottom Pivot Assembly-Sidewall Application	
FINISH:	# PCS:	REV:



CROWN INDUSTRIAL

So. San Francisco, Ca
(650) 952-5150

www.crown-industrial.com

DWG #: 0003076
DRAWN:BCM 9/18/2020
SHEET #1
File: 0003076.idw

Avail. Finishes:
370S-US26D Satin Chrome Plated Finish
370S-10B Dark Bronze Finish

4

3

2

1



4

3

2

1

D

D

C

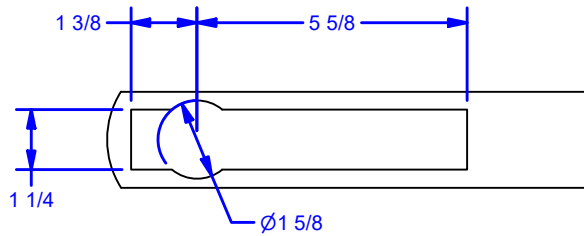
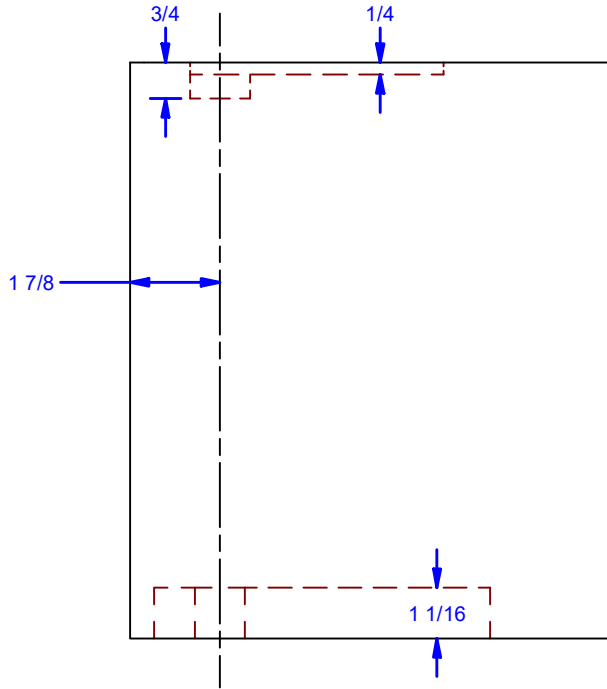
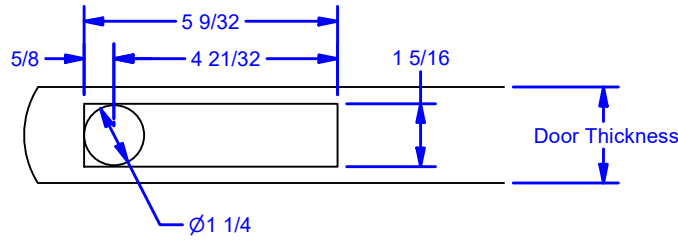
C

B

B

A

A



ALL DIMENSIONS IN INCHES

THE INFORMATION CONTAINED IN THIS DRAWING IS THE SOLE PROPERTY OF CROWN INDUSTRIAL. ANY REPRODUCTION IN PART OR AS A WHOLE WITHOUT THE WRITTEN PERMISSION OF CROWN INDUSTRIAL IS PROHIBITED.	ID #: 0003079	STOCK PART #:
	MATERIAL: Wood (Birch)	
DESCRIPTION: Wood Door Prep. for 370S Pivot		
FINISH:	# PCS:	REV:



CROWN INDUSTRIAL

So. San Francisco, Ca
(650) 952-5150

www.crown-industrial.com

DWG #: 0003076
DRAWN:BCM 9/18/2020
SHEET #2

File: 0003076.idw

4

3

2

1

