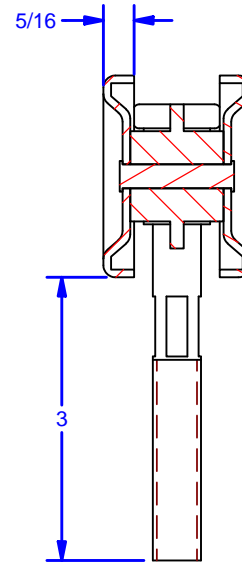


TOLERANCE: ALL DIMENSIONS $\pm 1/32$



SECTION B-B

ALL DIMENSIONS IN INCHES

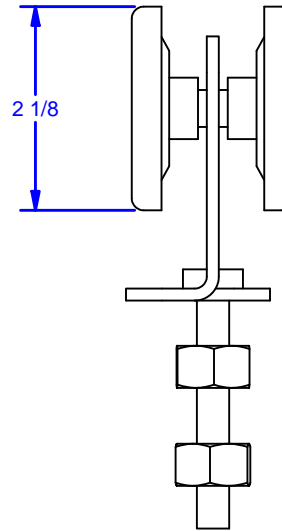
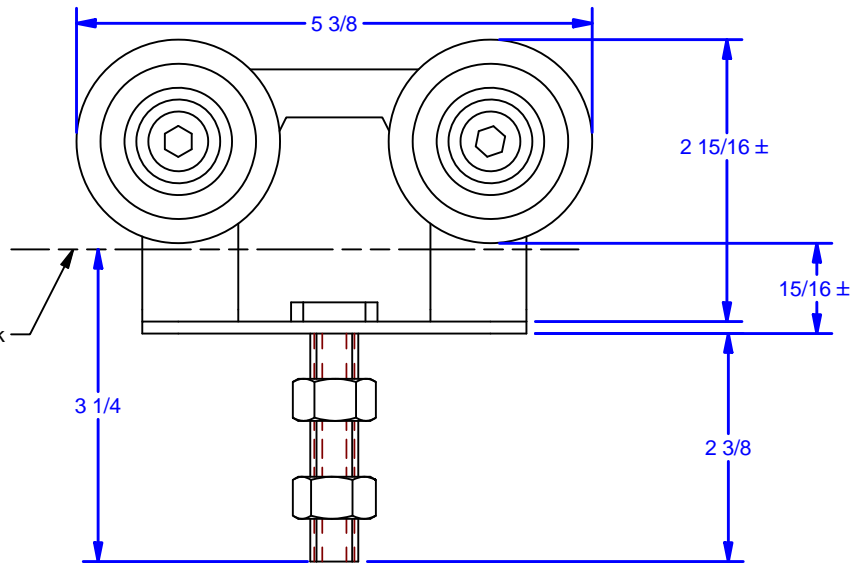
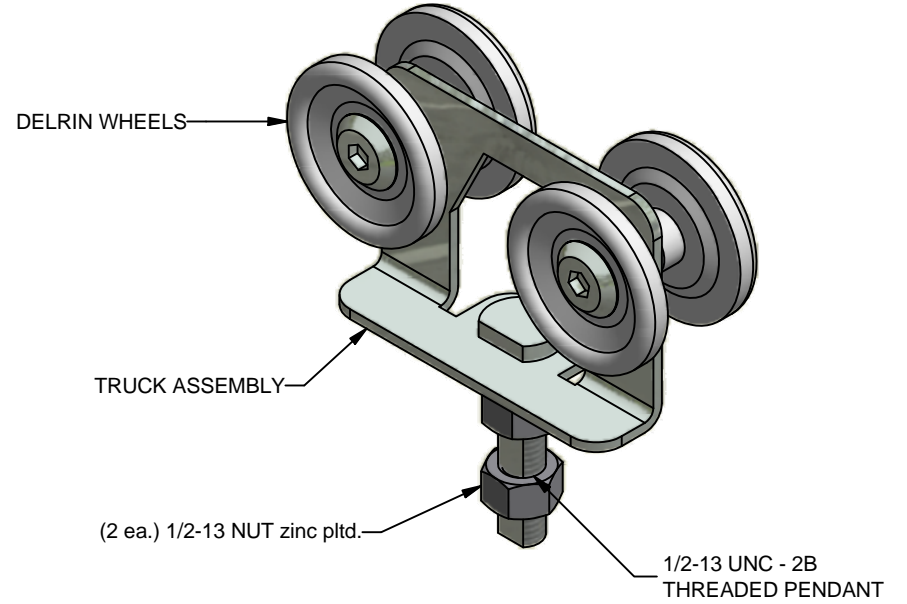
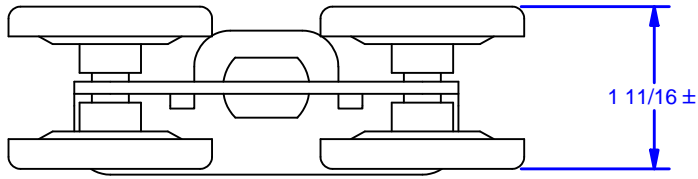
| | | |
|--|-----------|----------|
| THE INFORMATION CONTAINED IN THIS DRAWING IS THE SOLE PROPERTY OF CROWN INDUSTRIAL. ANY REPRODUCTION IN PART OR AS A WHOLE WITHOUT THE WRITTEN PERMISSION OF CROWN INDUSTRIAL IS PROHIBITED. | PART #: | STOCK #: |
| | 0000759 | 4-1R |
| DESCRIPTION: | MATERIAL: | |
| RB Truck, Caged Roller Bearings (Reference Only) | | |
| FINISH: | # PCS: | REV: |
| US2C Zinc | 2 | |



CROWN INDUSTRIAL

So. San Francisco, Ca
(650) 952-5150

www.crown-industrial.com



Bottom of #4 Track

ALL DIMENSIONS IN INCHES

| | | | | |
|--|-----------|---------|---------------|------|
| THE INFORMATION CONTAINED IN THIS DRAWING IS THE SOLE PROPERTY OF CROWN INDUSTRIAL. ANY REPRODUCTION IN PART OR AS A WHOLE WITHOUT THE WRITTEN PERMISSION OF CROWN INDUSTRIAL IS PROHIBITED. | ID #: | 0000507 | STOCK PART #: | 4-1P |
| | MATERIAL: | | Steel | |
| DESCRIPTION: | | | | |
| PB Truck, w/ Delrin Wheel | | | | |
| FINISH: | | | # PCS: | REV: |
| Clear Zinc | | | 2 | |



CROWN INDUSTRIAL
 So. San Francisco, Ca
 (650) 952-5150
www.crown-industrial.com

DWG #: 4-1P
 DRAWN:BCM 4/8/2009
 SHEET #1
 File: 0000507.idw

4

3

2

1

D

D

C

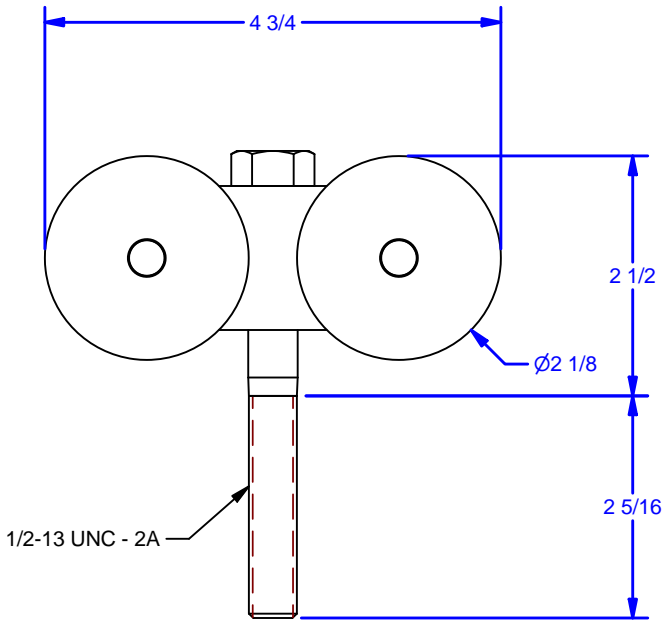
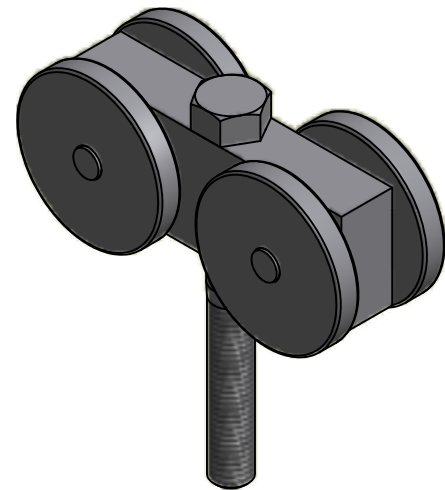
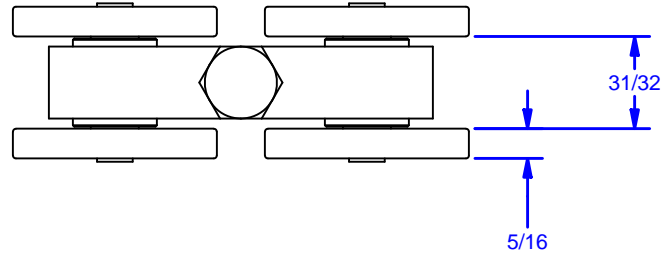
C

B

B

A

A



TOLERANCE: ALL DIMENSIONS $\pm 1/32$

ALL DIMENSIONS IN INCHES

| | | | | |
|--|-----------|---------|---------------|-------|
| THE INFORMATION CONTAINED IN THIS DRAWING IS THE SOLE PROPERTY OF CROWN INDUSTRIAL. ANY REPRODUCTION IN PART OR AS A WHOLE WITHOUT THE WRITTEN PERMISSION OF CROWN INDUSTRIAL IS PROHIBITED. | ID #: | 0000764 | STOCK PART #: | 4S-1B |
| | MATERIAL: | | | |
| DESCRIPTION: BB Truck, Ball Bearing S.S. | | | | |
| FINISH: #2B Mill | # PCS: | 2 | REV: | |



CROWN INDUSTRIAL
 So. San Francisco, Ca
 (650) 952-5150
www.crown-industrial.com

DWG #: 4S-1B
 DRAWN: BCM 2/24/2010
 SHEET #1
 File: 0000764.idw

4

3

2

1

