

Unlocked

Locked

Padlock
(By Others)

Latch Plate is Reversible for
Left Hand or Right Hand Doors

Padlockable Aperture

4X Ø9/32 THRU
For 1/4 Fasteners, (By Others)

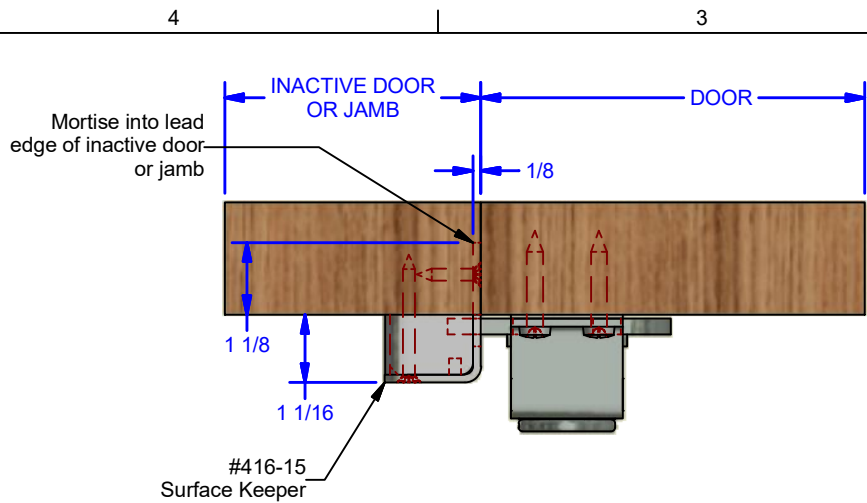
ALL DIMENSIONS IN INCHES

THE INFORMATION CONTAINED IN THIS DRAWING IS THE SOLE PROPERTY OF CROWN INDUSTRIAL. ANY REPRODUCTION IN PART OR AS A WHOLE WITHOUT THE WRITTEN PERMISSION OF CROWN INDUSTRIAL IS PROHIBITED.	ID #:	0000400	STOCK PART #:	416
	MATERIAL:			
DESCRIPTION:				
416 Tite Tite Bolt				
FINISH:			# PCS:	REV:
Clear Zinc				

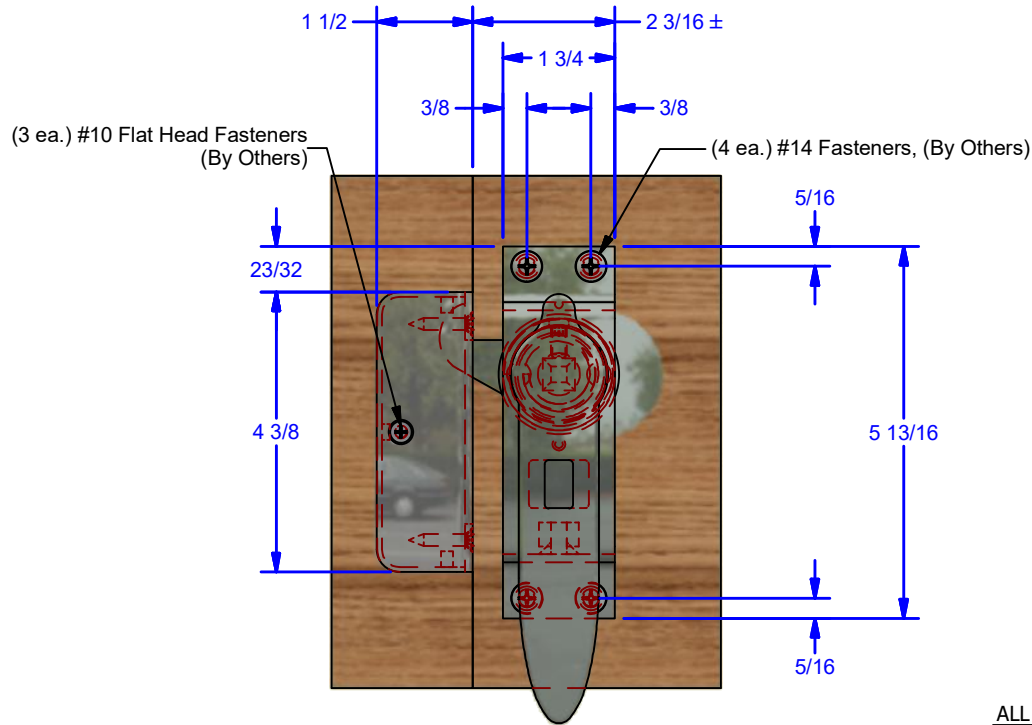


CROWN INDUSTRIAL
So. San Francisco, Ca
(650) 952-5150
www.crown-industrial.com

DWG #: 416
DRAWN: BCM 2/19/2009
SHEET #1
File: 0000400.idw

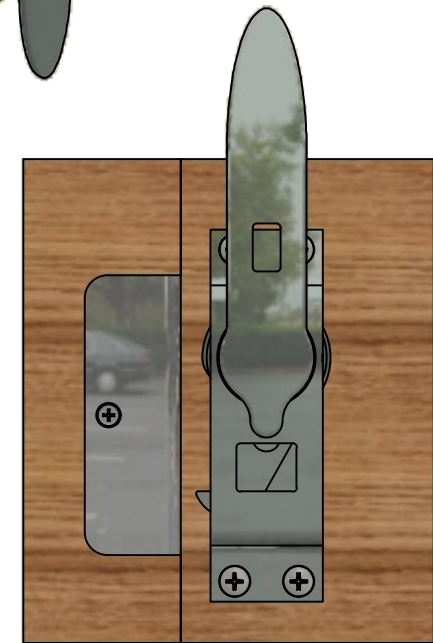
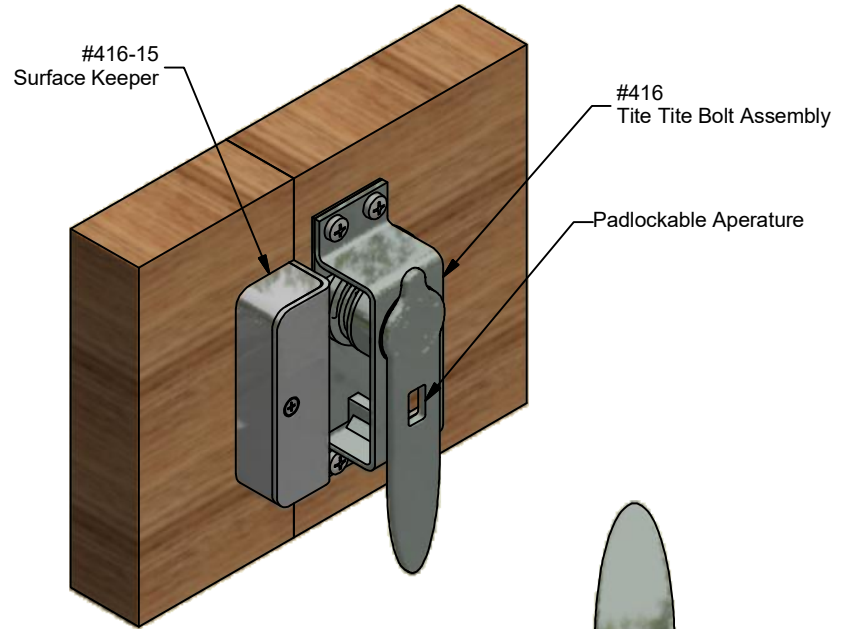


PLAN VIEW



**ELEVATION VIEW
LOCKED POSITION**

ALL FASTENERS BY OTHERS



**ELEVATION VIEW
UNLOCKED POSITION**

ALL DIMENSIONS IN INCHES

THE INFORMATION CONTAINED IN THIS DRAWING IS THE SOLE PROPERTY OF CROWN INDUSTRIAL. ANY REPRODUCTION IN PART OR AS A WHOLE WITHOUT THE WRITTEN PERMISSION OF CROWN INDUSTRIAL IS PROHIBITED.	ID #:	STOCK PART #:
	0000416	416-2
DESCRIPTION:	MATERIAL:	
416 Tite Bolt w/ 416-15 Surface Keeper, Bipart/Single Slide		
FINISH:	# PCS:	REV:
Clear Zinc		



CROWN INDUSTRIAL

So. San Francisco, Ca
(650) 952-5150

www.crown-industrial.com

4

3



2

1

D

D

C

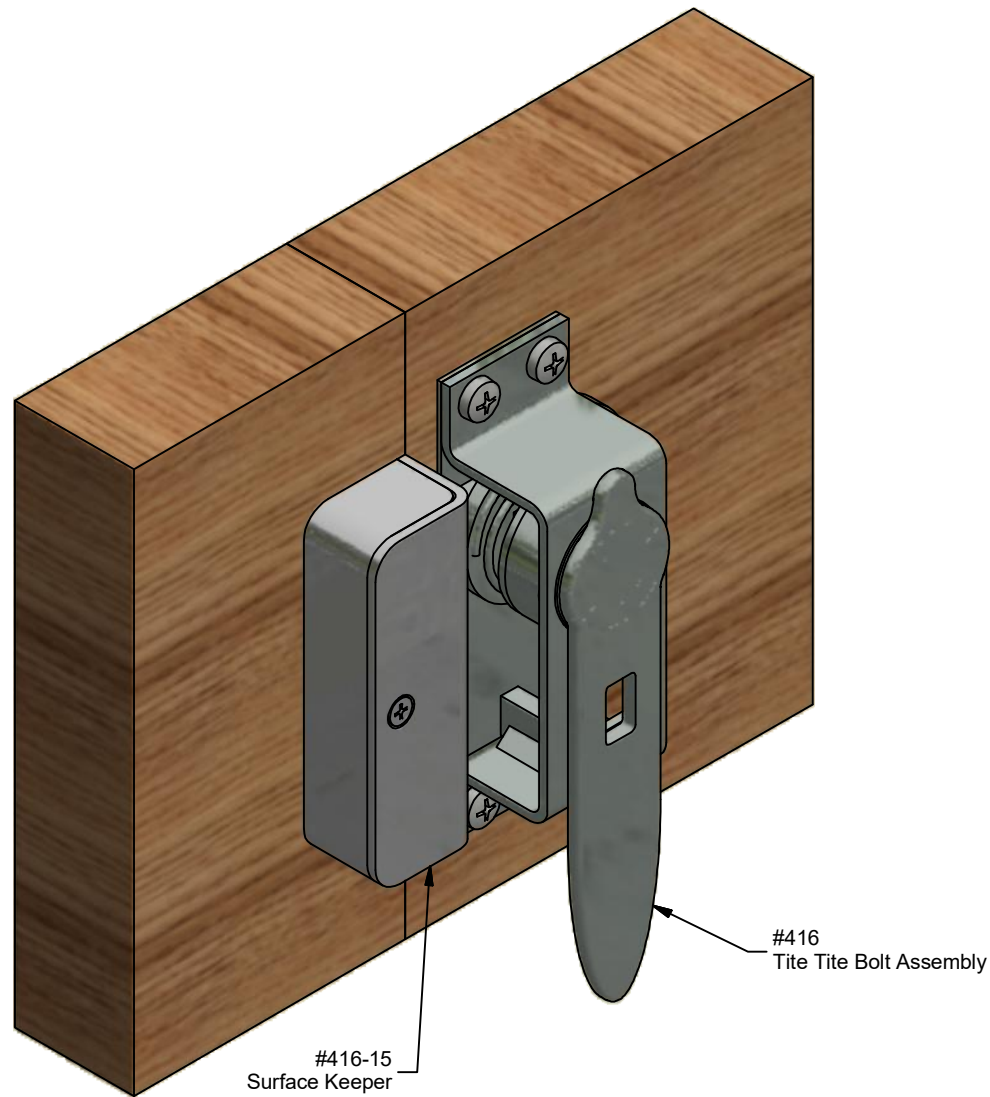
C

B

B

A

A



ALL DIMENSIONS IN INCHES

THE INFORMATION CONTAINED IN THIS DRAWING IS THE SOLE PROPERTY OF CROWN INDUSTRIAL. ANY REPRODUCTION IN PART OR AS A WHOLE WITHOUT THE WRITTEN PERMISSION OF CROWN INDUSTRIAL IS PROHIBITED.	ID #:	0000416	STOCK PART #:	416-2
	MATERIAL:			
DESCRIPTION: 416 Tite Tite Bolt w/ 416-15 Surface Keeper, Bipart/Single Slide				
FINISH:	Clear Zinc	# PCS:	REV:	



CROWN INDUSTRIAL

So. San Francisco, Ca
(650) 952-5150

www.crown-industrial.com

DWG #: 416
DRAWN:BCM 2/19/2009
SHEET #5

File: 0000400.idw

4

3



2

1

4

3

2

1

D

D

C

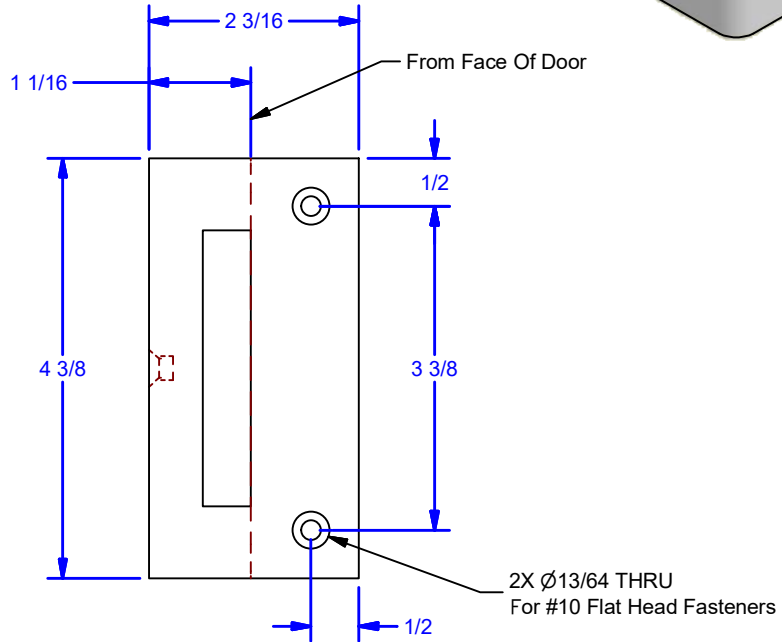
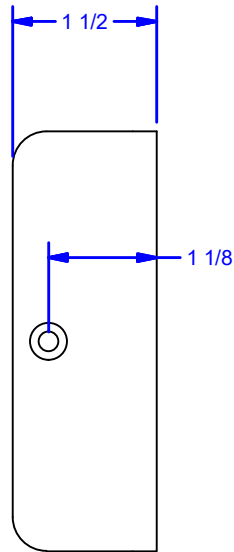
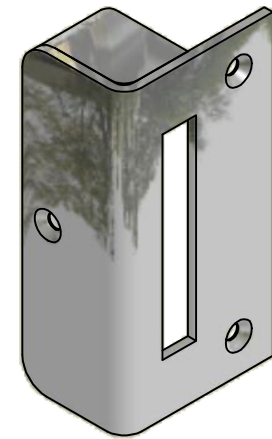
C

B

B

A

A



ALL DIMENSIONS IN INCHES

THE INFORMATION CONTAINED IN THIS DRAWING IS THE SOLE PROPERTY OF CROWN INDUSTRIAL. ANY REPRODUCTION IN PART OR AS A WHOLE WITHOUT THE WRITTEN PERMISSION OF CROWN INDUSTRIAL IS PROHIBITED.	ID #:	STOCK PART #:
	0000398	416-15
DESCRIPTION:	MATERIAL:	
Surface Keeper, Biparting & Single Slide	Welded Steel Mild	
FINISH:	# PCS:	REV:
Clear Zinc		



CROWN INDUSTRIAL

So. San Francisco, Ca
(650) 952-5150
www.crown-industrial.com

DWG #: 416
DRAWN:BCM 2/18/2009
SHEET #7
File: 0000400.idw

4

3

2

1

