

4

3

2

1

D

D

C

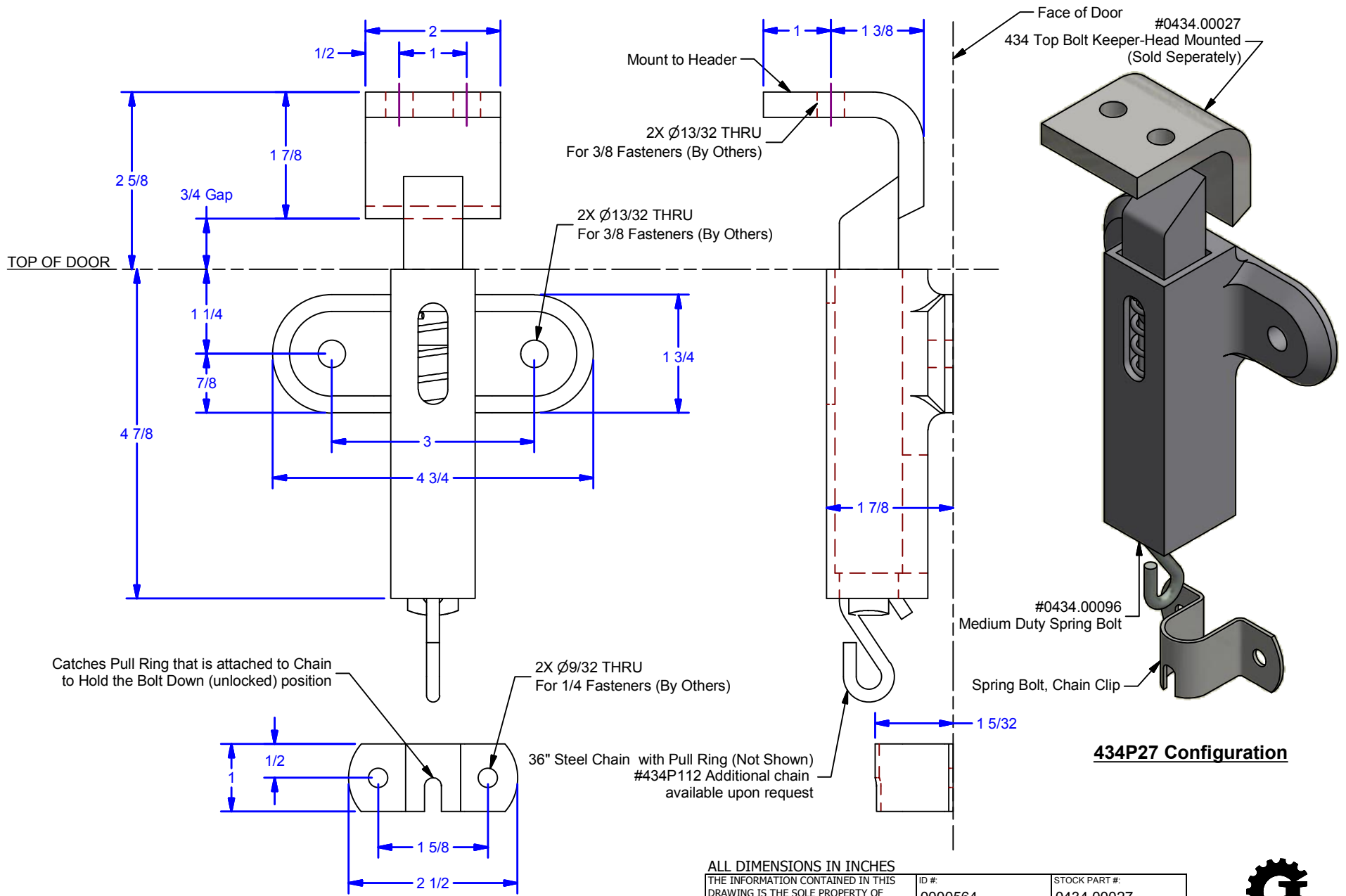
C

B

B

A

A



DWG #: 434P96
 DRAWN:BCM 6/3/2009
 SHEET #2
 File: 0000564.idw

Available Finishes:
 0514.00036: Powder Coat Pebble Tan
 0514.00036SC: Powder Coat Black
 0514.00036ZC: Clear Zinc Plated

ALL DIMENSIONS IN INCHES

THE INFORMATION CONTAINED IN THIS DRAWING IS THE SOLE PROPERTY OF CROWN INDUSTRIAL. ANY REPRODUCTION IN PART OR AS A WHOLE WITHOUT THE WRITTEN PERMISSION OF CROWN INDUSTRIAL IS PROHIBITED.	ID #:	0000564	STOCK PART #:	0434.00027
	MATERIAL:			
DESCRIPTION: Spring Bolt Assy for 434P27 Keeper				
FINISH:		# PCS:	REV:	



CROWN INDUSTRIAL
 So. San Francisco, Ca
 (650) 952-5150
 www.crown-industrial.com