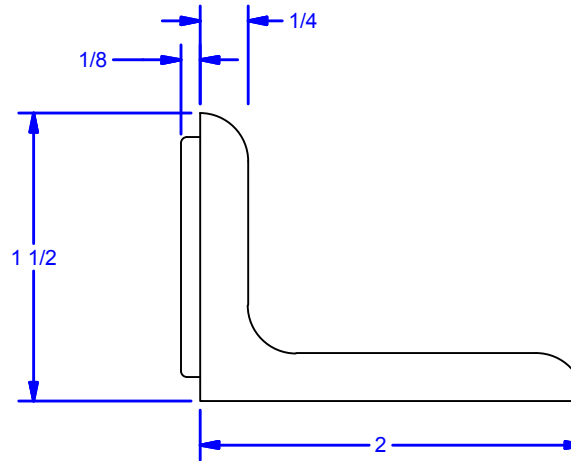
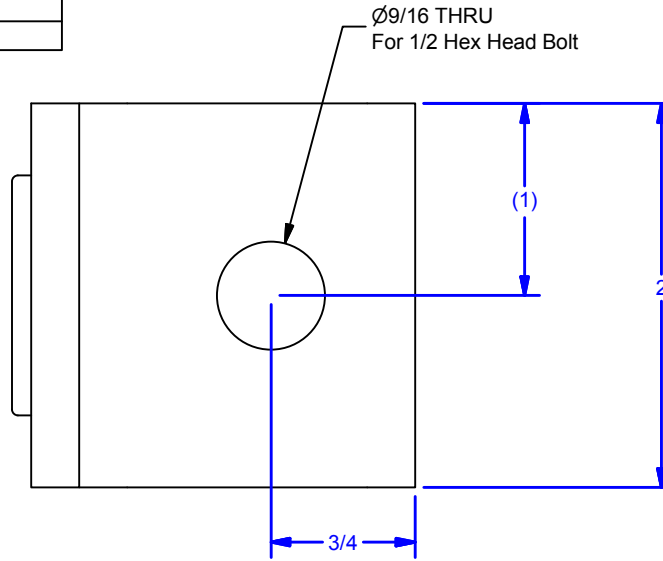
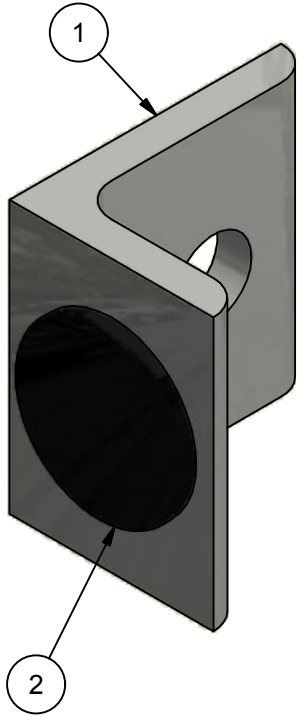


Parts List				
ITEM	QTY	ID #	DESCRIPTION	STOCK PART #
1	1	0000084	Flat Track Stop	43S
2	1	0001076	1.25 O.D. x .100 Adhesive Back Rubber Bumper, black (43S)	



**Finishes:**

- B: Flat Black Painted
- C: Sanded with Painted Clear Coat
- G: Hot Dipped Galvanized
- HB: Hammer Bronze Painted

DWG #: 0000084  
 DRAWN: BCM 6/27/2011  
 SHEET #1  
 File: 0000084.idw

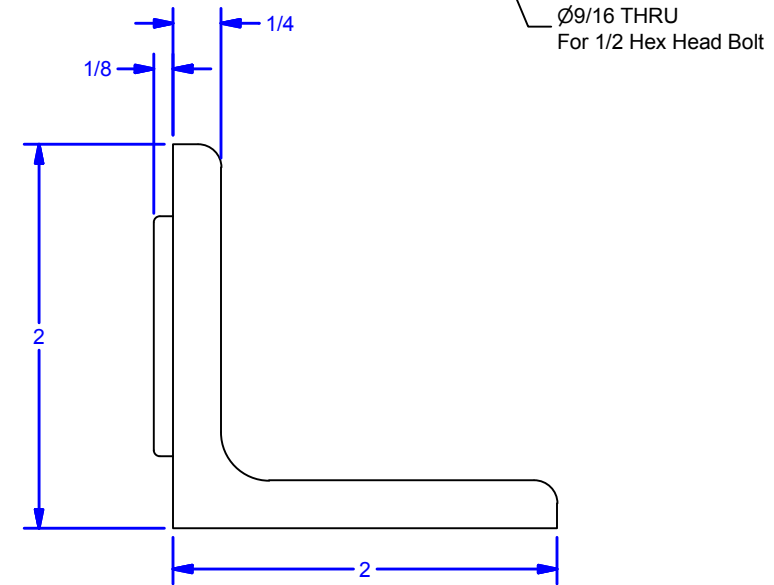
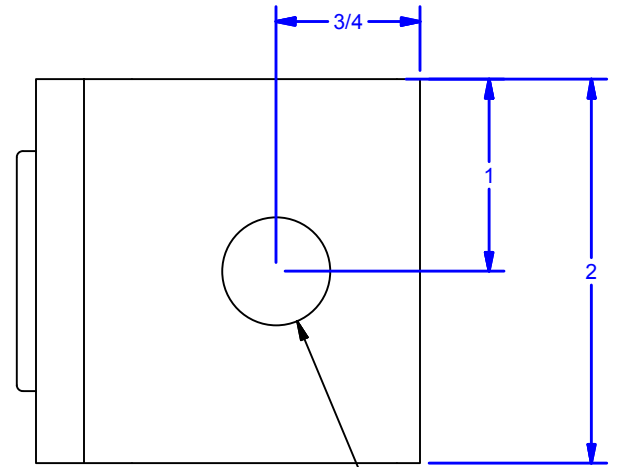
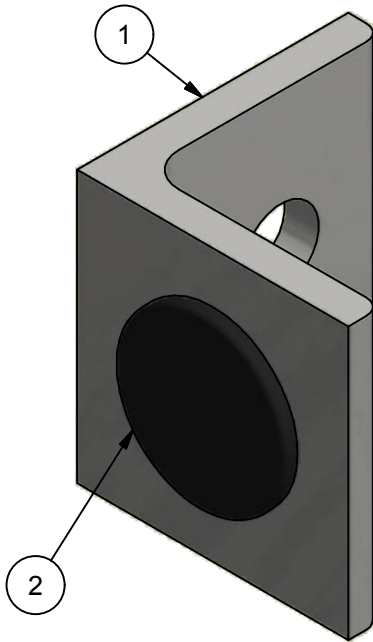
**ALL DIMENSIONS IN INCHES**

THE INFORMATION CONTAINED IN THIS DRAWING IS THE SOLE PROPERTY OF CROWN INDUSTRIAL. ANY REPRODUCTION IN PART OR AS A WHOLE WITHOUT THE WRITTEN PERMISSION OF CROWN INDUSTRIAL IS PROHIBITED.		ID #: 0001076	STOCK PART #: 43S
DESCRIPTION: Track Stop w/ Rubber Bumper Attached (Optional)		MATERIAL:	
FINISH:		# PCS: 1	REV:



**CROWN INDUSTRIAL**  
 So. San Francisco, Ca  
 (650) 952-5150  
 www.crown-industrial.com

Parts List				
ITEM	QTY	ID #	DESCRIPTION	STOCK #
1	1	0002670	Flat Track Stop (Door 2-3/16" to 3-1/4" Thick)	43S3
2	1	0001076	1.25 O.D. x .100 Adhesive Back Rubber Bumper, black (43S)	



Ø9/16 THRU  
For 1/2 Hex Head Bolt

**Finishes:**

- B: Flat Black Painted
- C: Sanded with Painted Clear Coat
- G: Hot Dipped Galvanized
- HB: Hammer Bronze Painted
- 43S-S: 304 Stainless Steel with #4 Brushed Finish

DWG #: 0000084  
DRAWN:BCM 6/27/2011  
SHEET #2

File: 0000084.idw

**ALL DIMENSIONS IN INCHES**

THE INFORMATION CONTAINED IN THIS DRAWING IS THE SOLE PROPERTY OF CROWN INDUSTRIAL. ANY REPRODUCTION IN PART OR AS A WHOLE WITHOUT THE WRITTEN PERMISSION OF CROWN INDUSTRIAL IS PROHIBITED.	ID #:	0002669	STOCK PART #:	43S3
	MATERIAL:			
DESCRIPTION: Track Stop (Door 2-3/16 to 3-1/4) w/ Rubber Bumper Attached				
FINISH:		# PCS:	REV:	



**CROWN INDUSTRIAL**

So. San Francisco, Ca  
(650) 952-5150

www.crown-industrial.com