

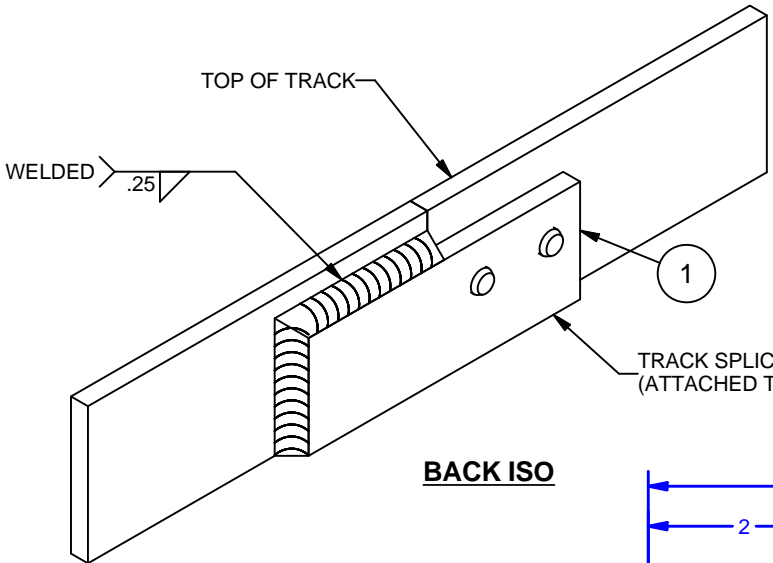
4

3

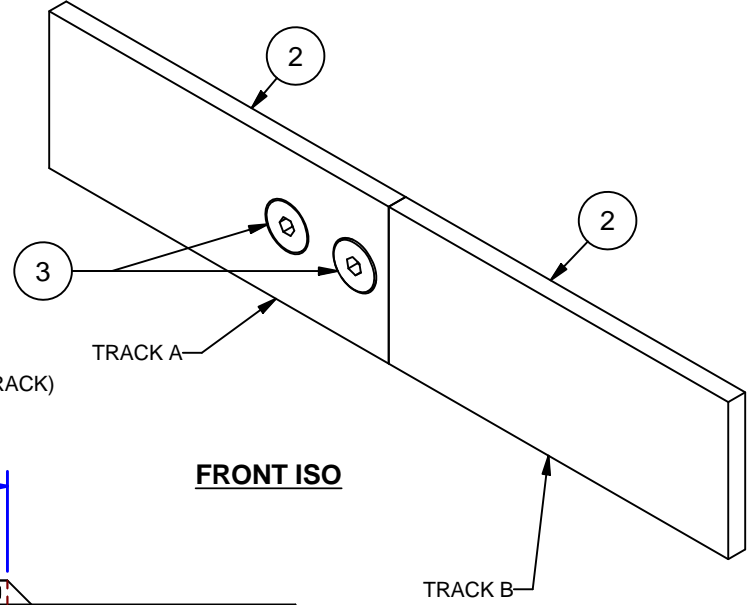
2

1

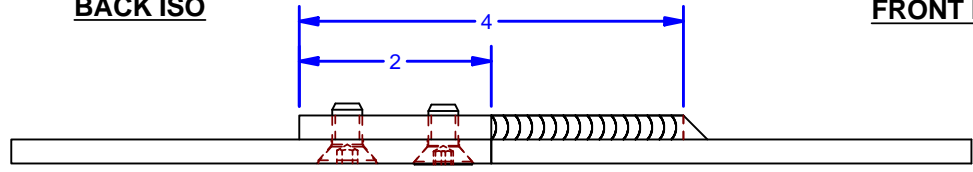
Parts List				
ITEM	QTY	PART #	DESCRIPTION	STOCK #
1	1	0000216	44 & 43 TRACK SPLICE-STD. (2 HOLE)	43SP & 44SP
2	2	0000885	Flat Track	43T
3	2	FHSCS 5/16-18 UNC x 0.625	5/16"-18 x 5/8" FSHMS	



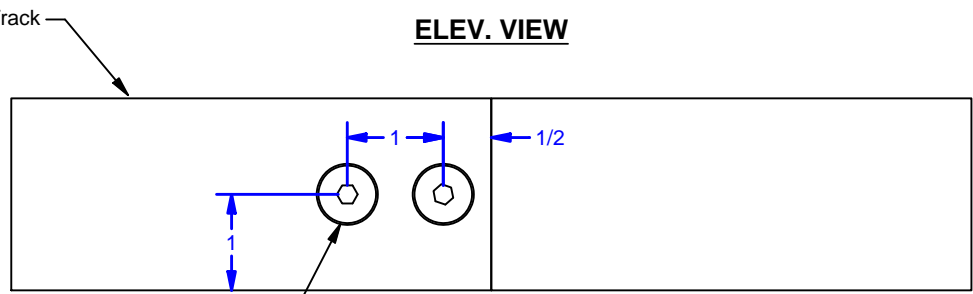
BACK ISO



FRONT ISO

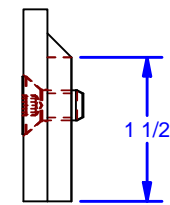


ELEV. VIEW



FRONT VIEW

TRACK DRILLED & COUNTERSUNK FOR 5/16 FLAT HEAD FASTENERS, BY CROWN (HEAD OF FASTENERS PAINTED TO MATCH FINISH)



RIGHT VIEW

ALL DIMENSIONS IN INCHES

THE INFORMATION CONTAINED IN THIS DRAWING IS THE SOLE PROPERTY OF CROWN INDUSTRIAL. ANY REPRODUCTION IN PART OR AS A WHOLE WITHOUT THE WRITTEN PERMISSION OF CROWN INDUSTRIAL IS PROHIBITED.

PART #:	0000883	STOCK #:	43SP
MATERIAL:	Welded Steel Mild		

DESCRIPTION:
Flat Track Splice, Ptd Finish

FINISH:	# PCS:	REV:
	1	



CROWN INDUSTRIAL
So. San Francisco, Ca
(650) 952-5150
www.crown-industrial.com

DWG #: 43SP/44SP
DRAWN:BCM 10/5/2010
SHEET #1
File: 0000882.idw

4

3

2

1

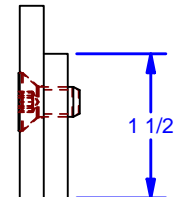
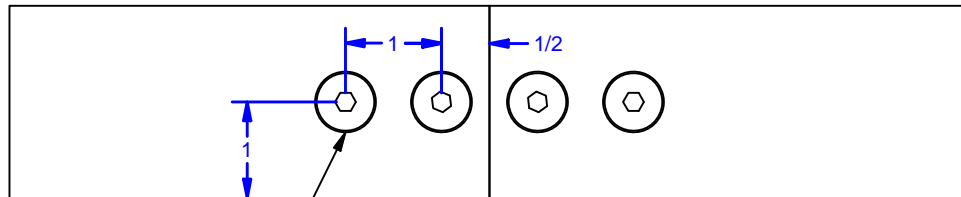
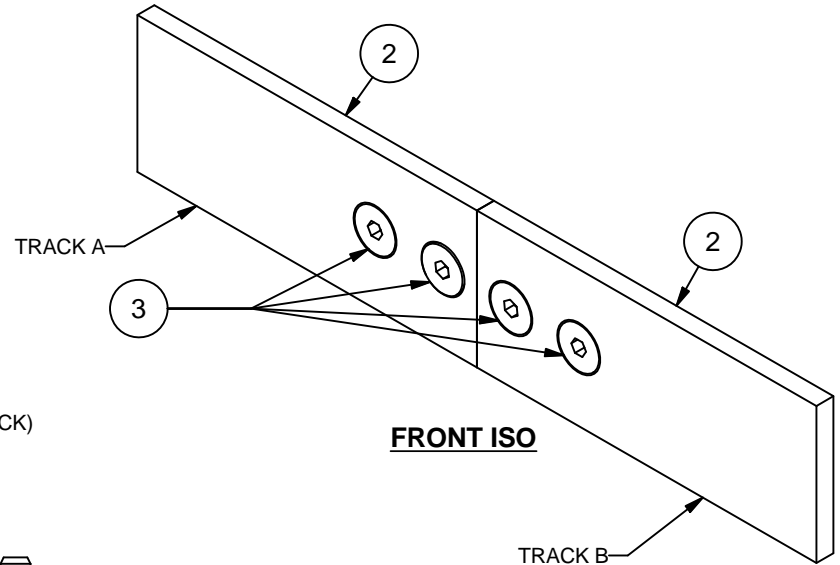
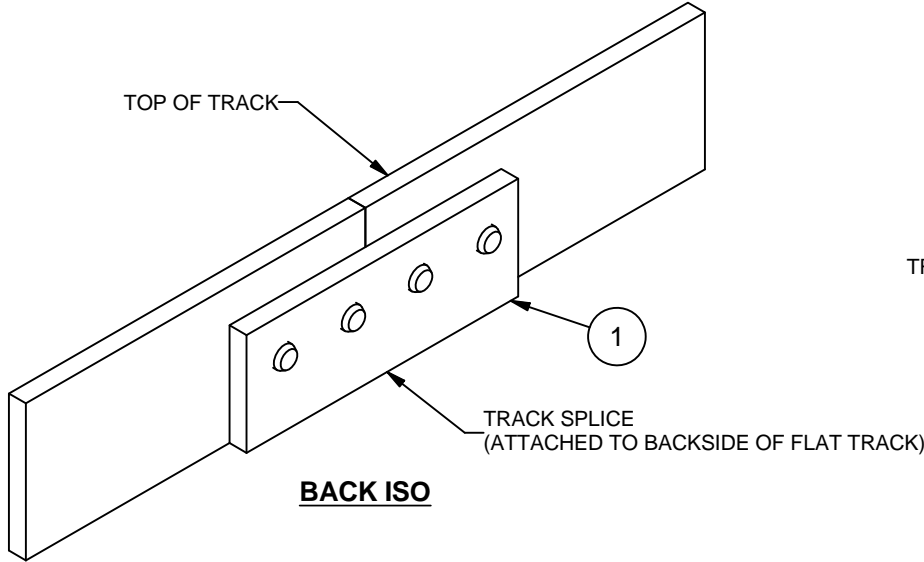
4

3

2

1

Parts List				
ITEM	QTY	PART #	DESCRIPTION	STOCK #
1	1	0000217	44 & 43 TRACK SPLICE (4-HOLE) GALV.	43SP-2 & 44SP-2
2	2	0000885	Flat Track	43T
3	4	FHSCS 5/16-18 UNC x 0.625	5/16"-18 x 5/8" FSHMS -S.S.	



TRACK DRILLED & COUNTERSUNK
FOR 5/16 FLAT HEAD FASTENERS, BY CROWN

ALL DIMENSIONS IN INCHES

THE INFORMATION CONTAINED IN THIS DRAWING IS THE SOLE PROPERTY OF CROWN INDUSTRIAL. ANY REPRODUCTION IN PART OR AS A WHOLE WITHOUT THE WRITTEN PERMISSION OF CROWN INDUSTRIAL IS PROHIBITED.

DESCRIPTION:

Flat Track Splice, Stainless Steel / Galvanized Finish

FINISH:

PART #: 0000884

MATERIAL: Default

STOCK #: 43SP

PCS: 1
REV:



CROWN INDUSTRIAL

So. San Francisco, Ca
(650) 952-5150

www.crown-industrial.com

4

3

2

1