

DWG #: 0001969
 DRAWN:BCM 4/22/2015
 SHEET #1
 File: 0001969.idw

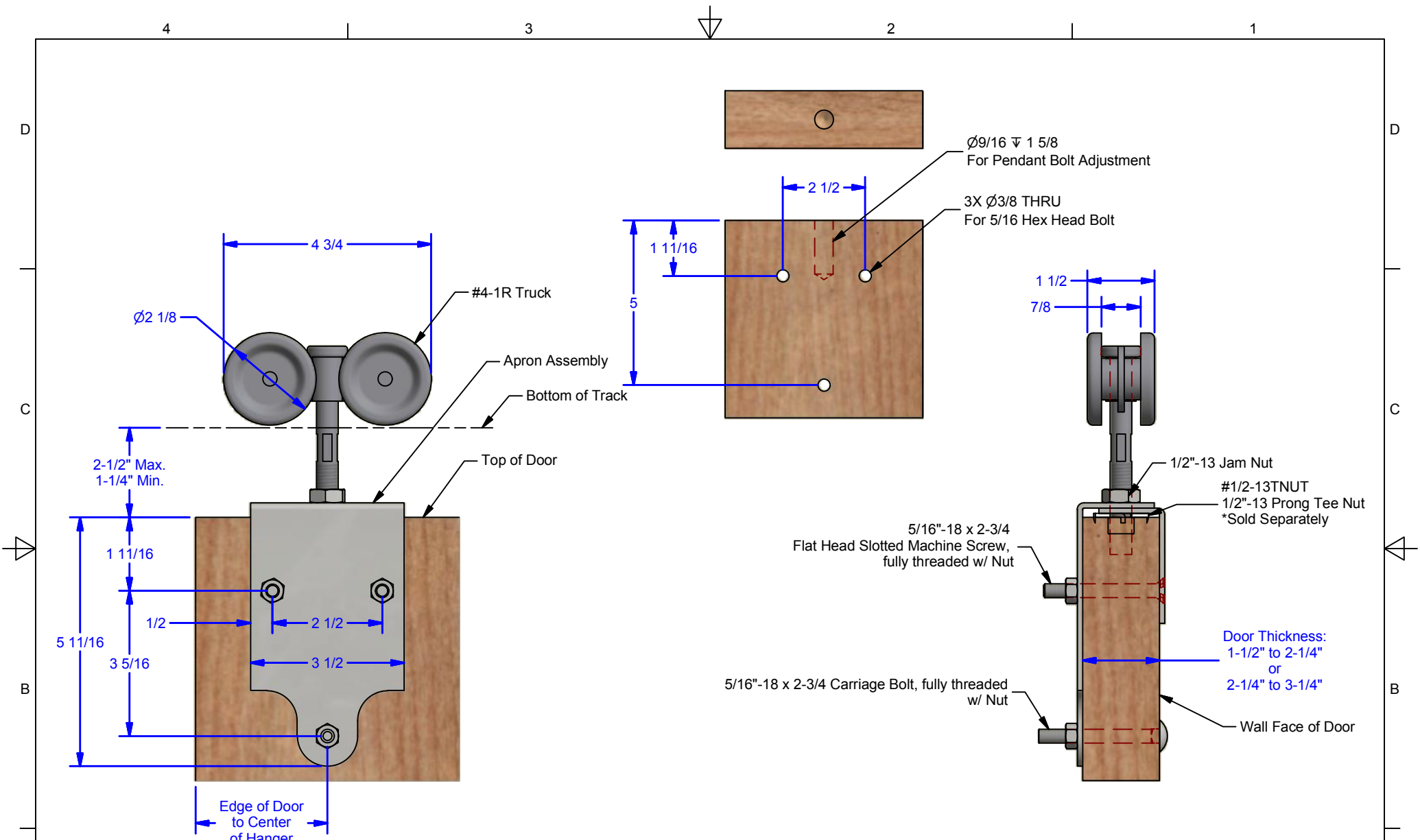
Stock Part Number:
 4Z2R: 1-1/2" to 2-1/4" Thick Door, Zinc Plated.
 4Z3R: 2-1/4" to 3-1/4" Thick Door, Zinc
 4P2RB: 1-1/2" to 2-1/4" Thick Door, Powder Coat Black
 4P2R: 1-1/2" to 2-1/4" Thick Door, Powder Coat Pebble Tan

ALL DIMENSIONS IN INCHES

THE INFORMATION CONTAINED IN THIS DRAWING IS THE SOLE PROPERTY OF CROWN INDUSTRIAL. ANY REPRODUCTION IN PART OR AS A WHOLE WITHOUT THE WRITTEN PERMISSION OF CROWN INDUSTRIAL IS PROHIBITED.	ID #:	STOCK PART #:
	0001977	4H
DESCRIPTION:		
Roller Bearing Hanger w/ Door		
FINISH:	# PCS:	REV:
	1	



CROWN INDUSTRIAL
 So. San Francisco, Ca
 (650) 952-5150
 www.crown-industrial.com



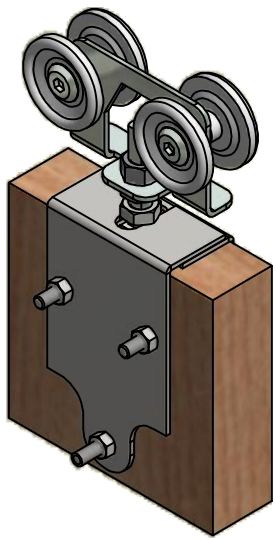
DWG #: 0001969
 DRAWN: BCM 4/22/2015
 SHEET #2
 File: 0001969.idw

Stock Part Number:
 4Z2R: 1-1/2" to 2-1/4" Thick Door, Zinc Plated.
 4Z3R: 2-1/4" to 3-1/4" Thick Door, Zinc
 4P2RB: 1-1/2" to 2-1/4" Thick Door, Powder Coat Black
 4P2R: 1-1/2" to 2-1/4" Thick Door, Powder Coat Pebble Tan

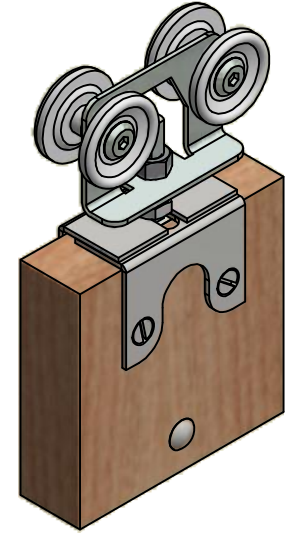
ALL DIMENSIONS IN INCHES

THE INFORMATION CONTAINED IN THIS DRAWING IS THE SOLE PROPERTY OF CROWN INDUSTRIAL. ANY REPRODUCTION IN PART OR AS A WHOLE WITHOUT THE WRITTEN PERMISSION OF CROWN INDUSTRIAL IS PROHIBITED.	ID #:	0002293	STOCK PART #:	4H
	MATERIAL:			
DESCRIPTION:				
Roller Bearing Hanger w/ Door (T Nut Option)				
FINISH:		# PCS:	1	REV:

CROWN INDUSTRIAL
 So. San Francisco, Ca
 (650) 952-5150
 www.crown-industrial.com

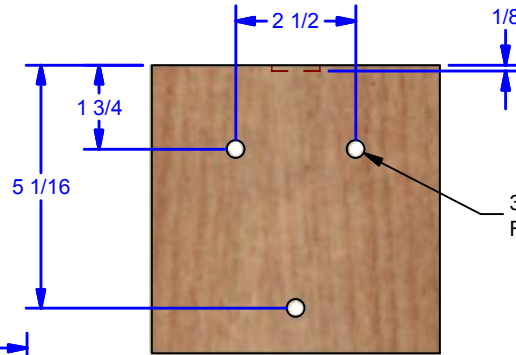
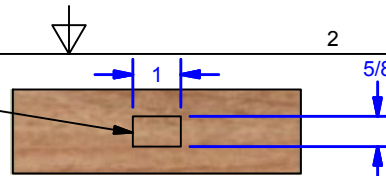


Outside Face



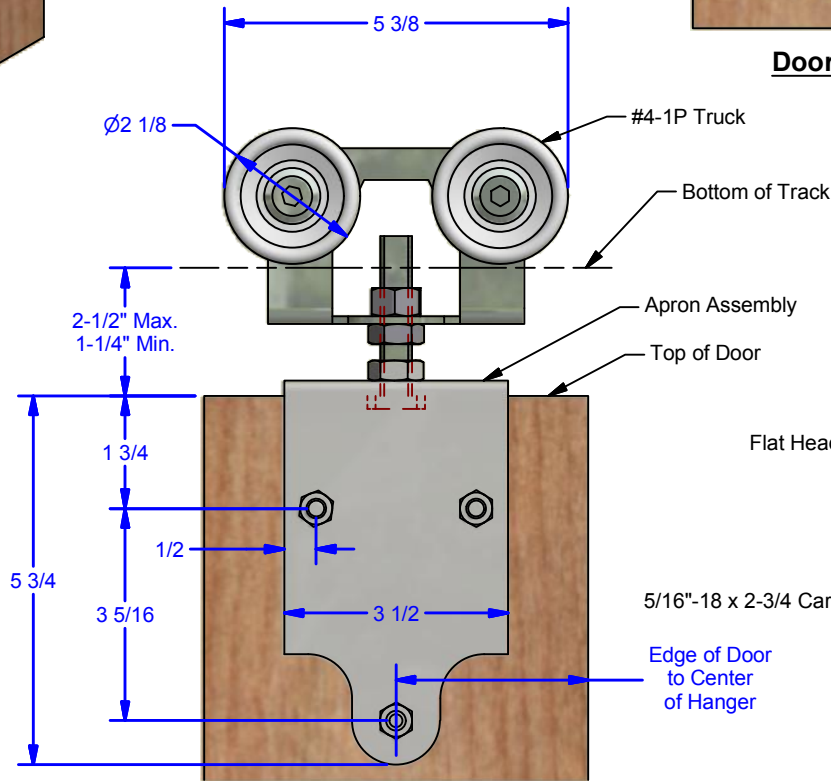
Wall Face

Prep. for Head of Pendant Bolt

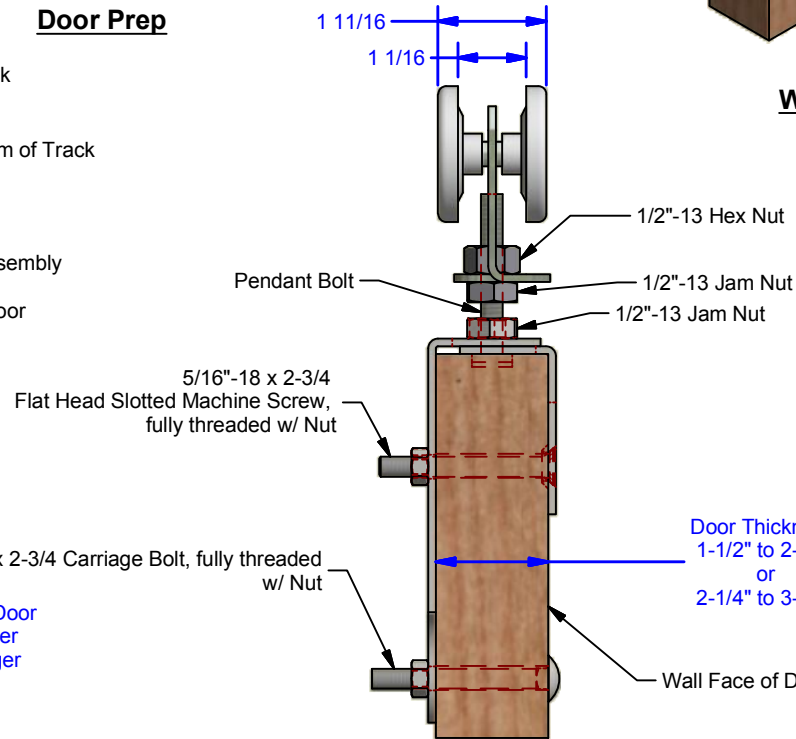


Door Prep

3X $\phi 3/8$ THRU
For 5/16 Hex Head Bolt



Front Elevation



Door Thickness:
1-1/2" to 2-1/4"
or
2-1/4" to 3-1/4"

Wall Face of Door

ALL DIMENSIONS IN INCHES

THE INFORMATION CONTAINED IN THIS DRAWING IS THE SOLE PROPERTY OF CROWN INDUSTRIAL. ANY REPRODUCTION IN PART OR AS A WHOLE WITHOUT THE WRITTEN PERMISSION OF CROWN INDUSTRIAL IS PROHIBITED.

DESCRIPTION:

Delrin Wheel Hanger w/ Door

FINISH:

ID #: 0002294

MATERIAL:

STOCK PART #: 4H

PCS: 1
REV:

DWG #: 0001969
DRAWN:BCM 4/22/2015
SHEET #3
File: 0001969.idw

Stock Part Number:
4Z2P: 1-1/2" to 2-1/4" Thick Door, Zinc Plated.
4Z3P: 2-1/4" to 3-1/4" Thick Door, Zinc
4P2PB: 1-1/2" to 2-1/4" Thick Door, Powder Coat Black



CROWN INDUSTRIAL

So. San Francisco, Ca
(650) 952-5150
www.crown-industrial.com

4

3



2

1

D

D

C

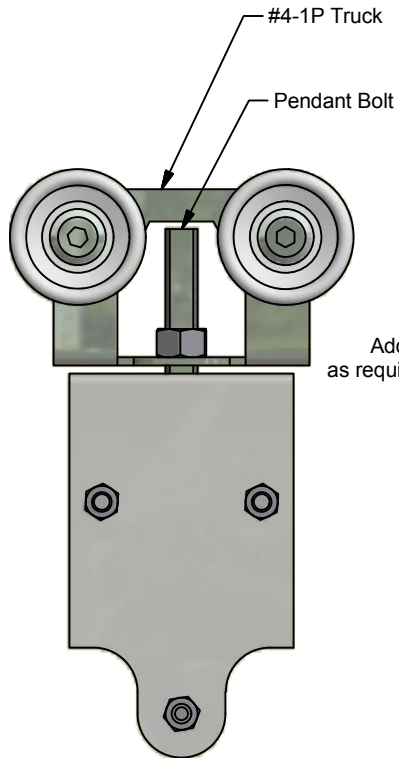
C

B

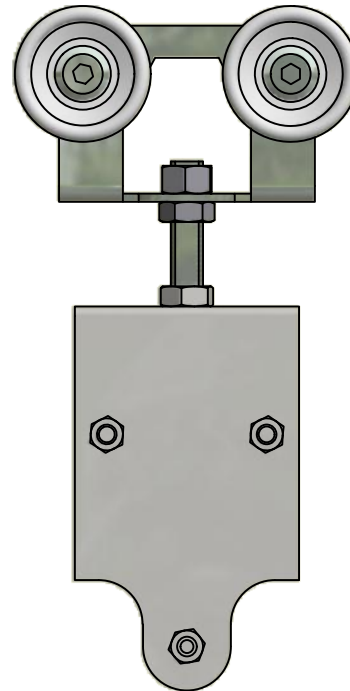
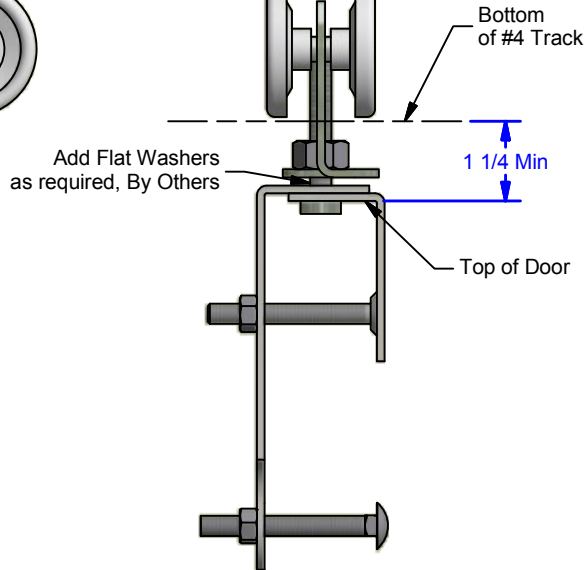
B

A

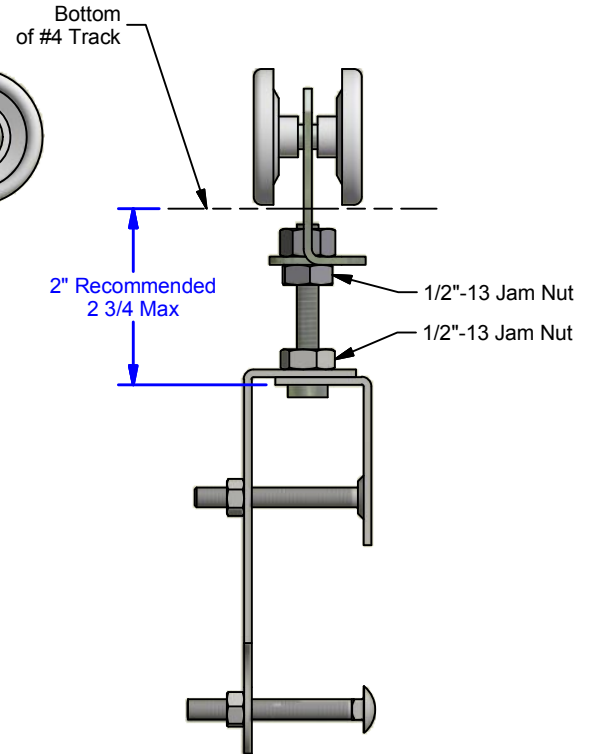
A



Min Height Elev.



**Max Height Elev.
Standard Configuration**



DWG #: 0001969
 DRAWN:BCM 4/22/2015
 SHEET #4
 File: 0001969.idw

ALL DIMENSIONS IN INCHES

THE INFORMATION CONTAINED IN THIS DRAWING IS THE SOLE PROPERTY OF CROWN INDUSTRIAL. ANY REPRODUCTION IN PART OR AS A WHOLE WITHOUT THE WRITTEN PERMISSION OF CROWN INDUSTRIAL IS PROHIBITED.

DESCRIPTION:

Delrin Bearing Hanger, 1-1/2" to 2-1/4" Thick Door

FINISH:

ID #:
0001437-1

MATERIAL:

STOCK PART #:
4Z2P

# PCS:	REV:
1	



CROWN INDUSTRIAL

So. San Francisco, Ca
 (650) 952-5150

www.crown-industrial.com

4

3



2

1