

4

3

2

1

D

D

C

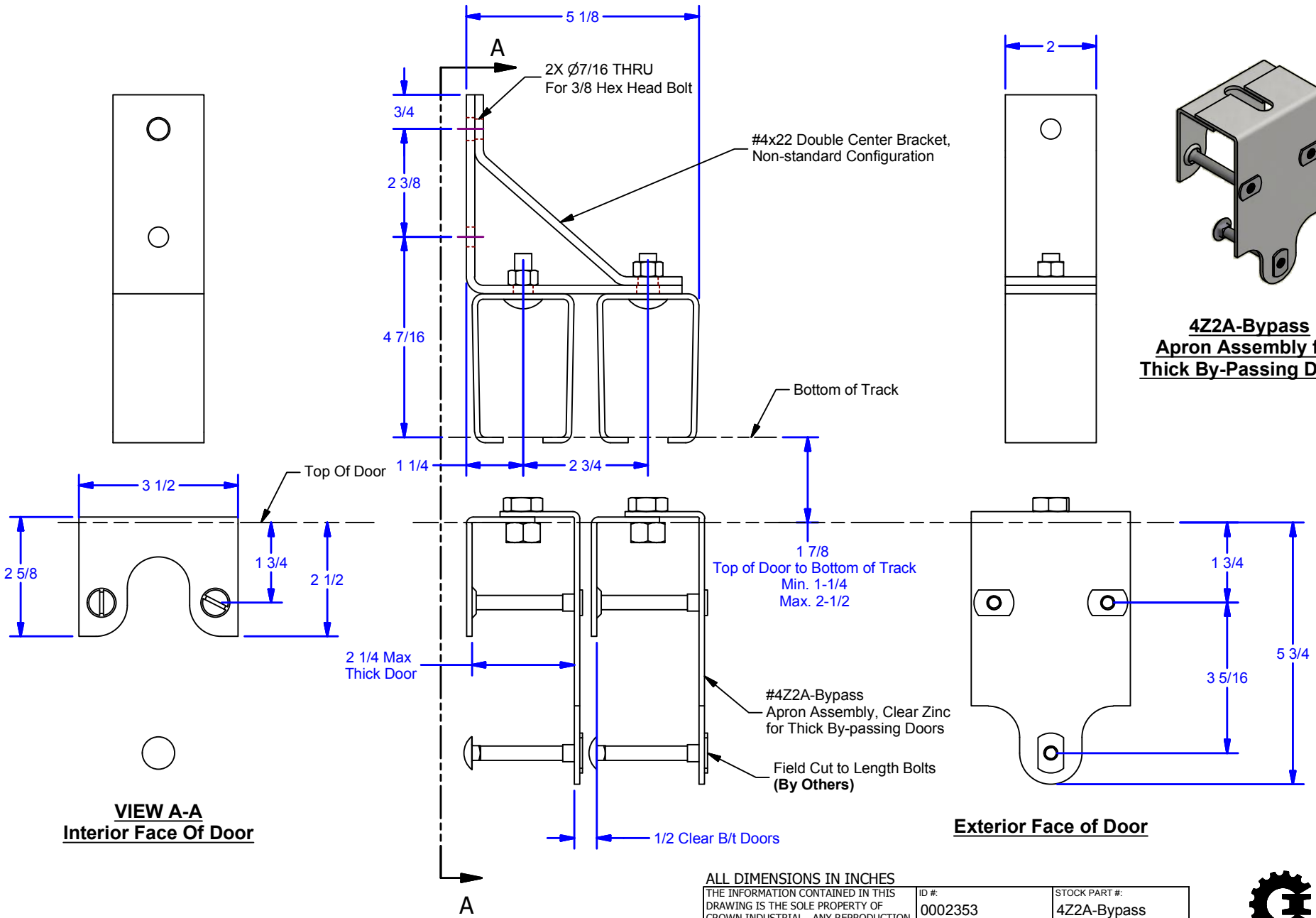
C

B

B

A

A



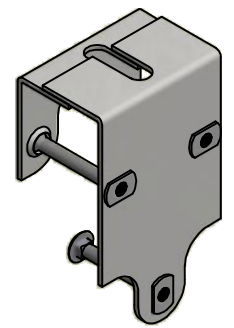
VIEW A-A
Interior Face Of Door

Exterior Face of Door

- NOTES:**
- Trucks (rollers), Track, and Doors are not shown for clarity.
 - This is a custom configuration of the bracket and apron assembly.

DWG #: 0001969
 DRAWN:BCM 10/6/2016
 SHEET #5
 File: 0001969.idw

ALL DIMENSIONS IN INCHES		ID #:	STOCK PART #:
THE INFORMATION CONTAINED IN THIS DRAWING IS THE SOLE PROPERTY OF CROWN INDUSTRIAL. ANY REPRODUCTION IN PART OR AS A WHOLE WITHOUT THE WRITTEN PERMISSION OF CROWN INDUSTRIAL IS PROHIBITED.		0002353	4Z2A-Bypass
DESCRIPTION:		MATERIAL:	
Apron Only for By-Passing, 1-1/2" to 2-1/4"-Hgs (4A)		# PCS:	REV:
FINISH:		1	
Clear Zinc			



4Z2A-Bypass Apron Assembly for Thick By-Passing Doors

CROWN INDUSTRIAL
 So. San Francisco, Ca
 (650) 952-5150
 www.crown-industrial.com