

4

3

2

1

D

D

C

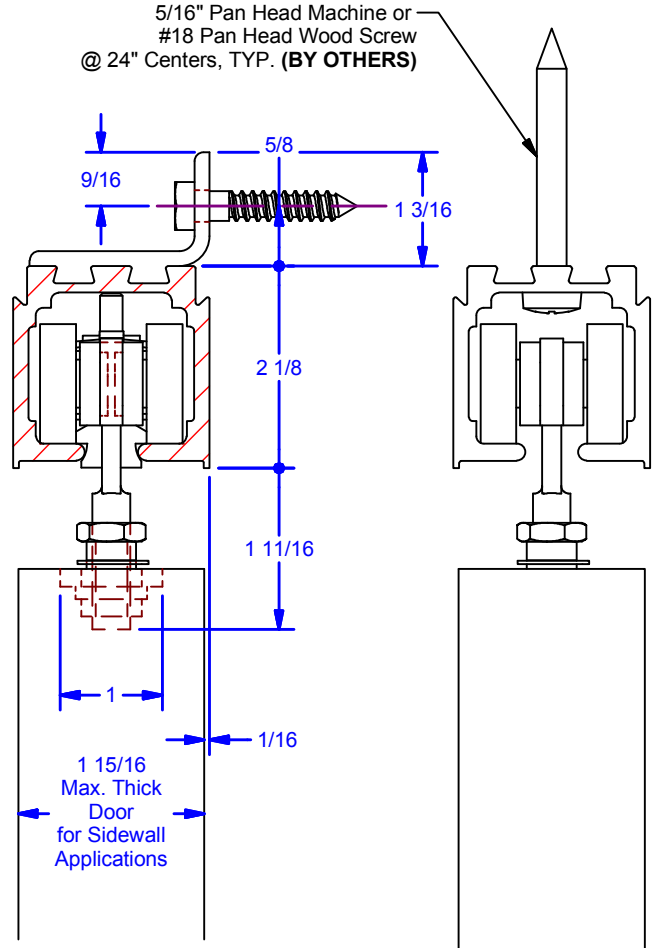
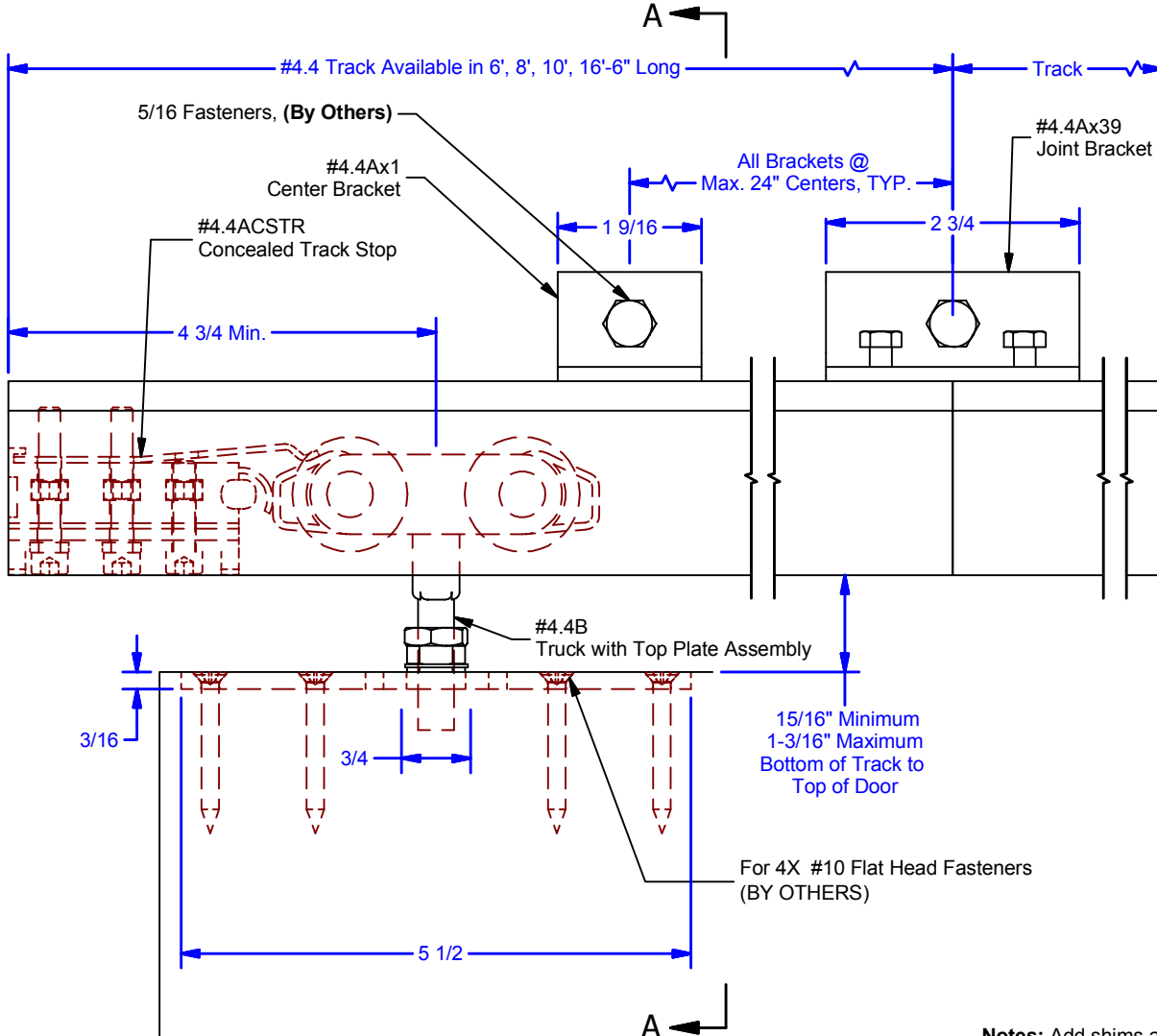
C

B

B

A

A



Notes: Add shims at bracket for doors thicker than 1 15/16"

**SECTION A-A
Sidewall Mounted**

Overhead Mounted

ALL DIMENSIONS IN INCHES

THE INFORMATION CONTAINED IN THIS DRAWING IS THE SOLE PROPERTY OF CROWN INDUSTRIAL. ANY REPRODUCTION IN PART OR AS A WHOLE WITHOUT THE WRITTEN PERMISSION OF CROWN INDUSTRIAL IS PROHIBITED.	ID #:	STOCK PART #:
	0001191	4.4
DESCRIPTION:	MATERIAL:	
#4.4 Hardware (440 lb. capacity)	Aluminum	
FINISH:	# PCS:	REV:
Clear Anodized Aluminum		



CROWN INDUSTRIAL
So. San Francisco, Ca
(650) 952-5150
www.crown-industrial.com

DWG #: 0000992
DRAWN: BCM 11/11/2011
SHEET #1
File: 0000992.idw

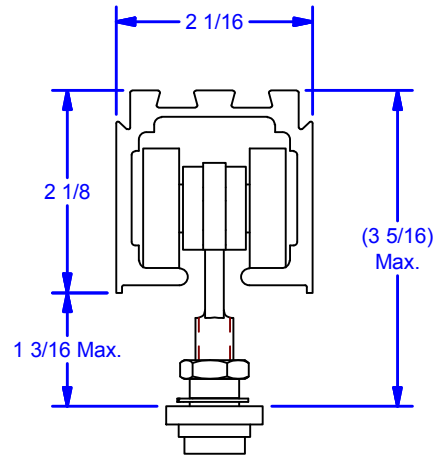
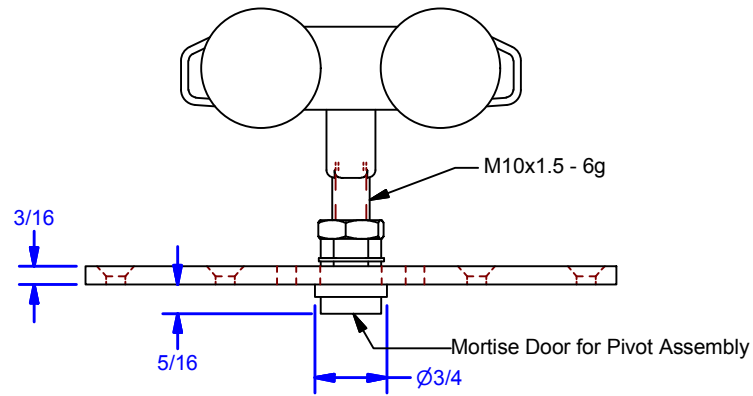
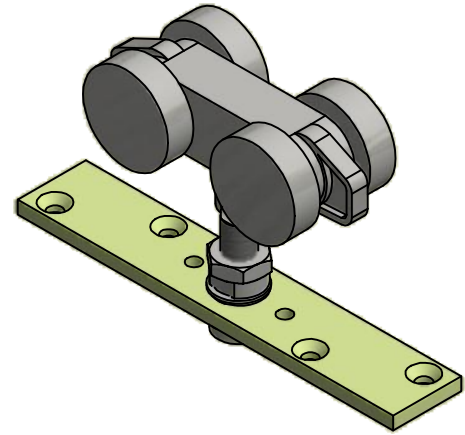
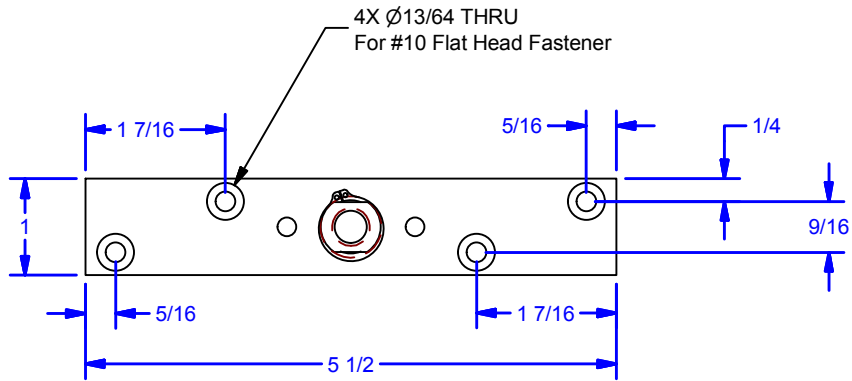
4

3

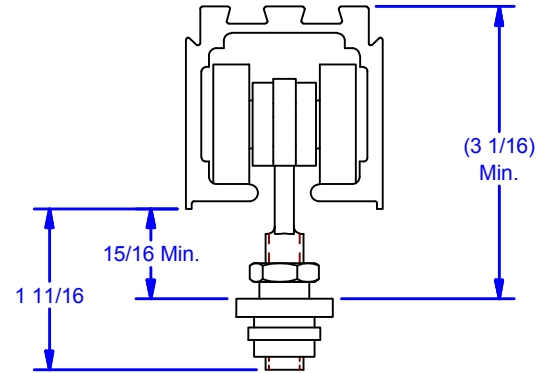
2

1





Maximum Head Section



Minimum Head Detail

DRAWING NOT TO BE USED AS TEMPLATE,
REFERENCE ONLY

DWG #: 0000992
DRAWN:BCM 2/22/2011
SHEET #2
File: 0000992.idw

ALL DIMENSIONS IN INCHES

THE INFORMATION CONTAINED IN THIS DRAWING IS THE SOLE PROPERTY OF CROWN INDUSTRIAL. ANY REPRODUCTION IN PART OR AS A WHOLE WITHOUT THE WRITTEN PERMISSION OF CROWN INDUSTRIAL IS PROHIBITED.

DESCRIPTION:

#4.4 Truck w/ Top Plate Assy

FINISH:

Plastic

ID #:

0000996

STOCK PART #:

4.4B

MATERIAL:

PCS: REV:



CROWN INDUSTRIAL

So. San Francisco, Ca
(650) 952-5150

www.crown-industrial.com